

# BRAINSTORMING

beginning the design process



**KABELSCHLEPP**

## What's best & where to start?

Asking yourself "What have others used? What are my options? Would this work for me?"  
With literally millions of systems in operation around the world and more than half a century of cable and hose carrier experience, we have assembled more than 100 application photographs to help energize the creative process.

the creative spark  
what have others used?  
**product application examples**  
what are my options? ideas



**Product:** MICROTRAK  
**Operating Mode:** Horizontal  
**Application:** Large Format Computer Graphics Plotter

1



**Product:** MICROTRAK  
**Operating Mode:** Horizontal & Vertical  
**Application:** Multi-Axis Measurement Equipment

2



**Product:** MICROTRAK  
**Operating Mode:** Horizontal  
**Application:** Automated Assembly Machinery

3



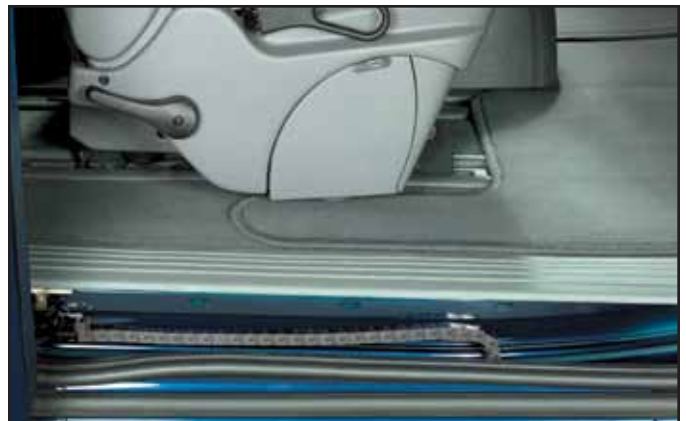
**Product:** PLASTITRAK DTO (designed to order)  
**Operating Mode:** Horizontal & Vertical (S-Configuration)  
**Application:** Automotive/Truck Power Seating

4



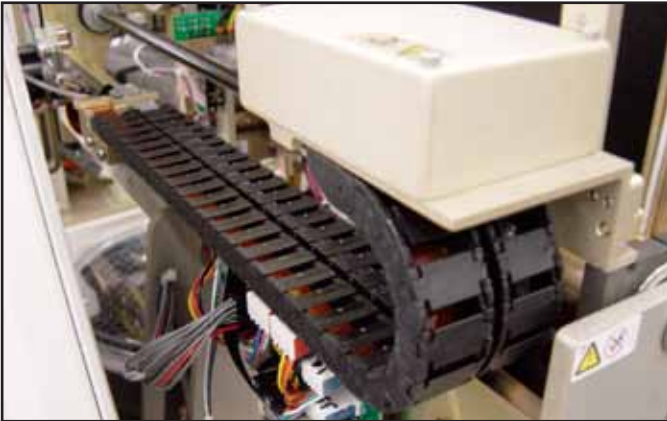
**Product:** MICROTRAK DTO (designed to order)  
**Operating Mode:** Horizontal (side mounted)  
**Application:** Automotive/Truck Power Sliding Doors

5



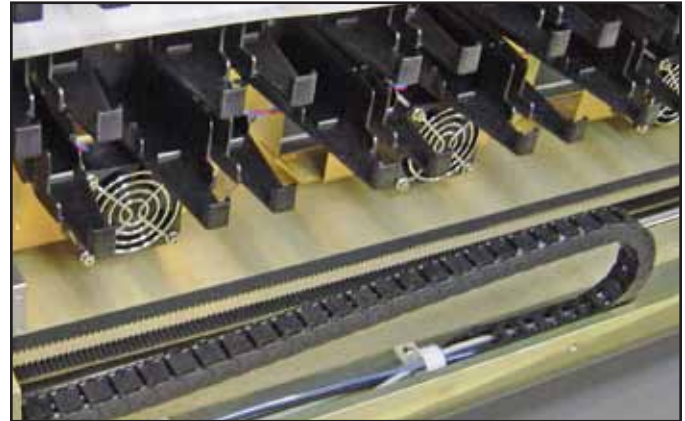
**Product:** MICROTRAK DTO (designed to order)  
**Operating Mode:** Horizontal and Lateral Combined  
**Application:** Automotive/Truck Power Sliding Doors

6



**Product:** MICROTRAK  
**Operating Mode:** Horizontal (side by side)  
**Application:** Medical Equipment

7



**Product:** MICROTRAK  
**Operating Mode:** Horizontal  
**Application:** Medical Scanning Equipment

8



**Product:** MICROTRAK  
**Operating Mode:** Horizontal (side mounted)  
**Application:** Measurement Equipment

9



**Product:** PLASTITRAK  
**Operating Mode:** Vertical (rotating)  
**Application:** Industrial Equipment

10



**Product:** PLASTITRAK  
**Operating Mode:** Vertical (rotating)  
**Application:** Process Equipment

11



**Product:** PLASTITRAK  
**Operating Mode:** Horizontal (rotating)  
**Application:** Machine Tool

12



**Product:** PLASTITRAK  
**Operating Mode:** Horizontal (off-the-floor)  
**Application:** Pick & Place Automation

13



**Product:** PLASTITRAK  
**Operating Mode:** Horizontal + Vertical + Rotary  
**Application:** Machining Center

14



**Product:** PLASTITRAK  
**Operating Mode:** Vertical & Horizontal  
**Application:** Interlinked Process Line

15



**Product:** UNIFLEX  
**Operating Mode:** Horizontal (self-supporting)  
**Application:** Automated Cutting

16



**Product:** PLASTITRAK  
**Operating Mode:** Vertical (loop-up) & Horizontal  
**Application:** Pick & Place

17



**Product:** PLASTITRAK  
**Operating Mode:** Vertical (loop-down) & Horizontal  
**Application:** Process Automation

18

**Product:** UNIFLEX**Operating Mode:** Vertical Hanging (hanging loop)**Application:** Stadium Scoreboard

19

**Product:** UNIFLEX**Operating Mode:** Horizontal (long-travel)**Application:** Cutting Tables

20

**Product:** UNIFLEX**Operating Mode:** Vertical (loop-up) & Horizontal**Application:** Portable Sawmill

21

**Product:** UNIFLEX**Operating Mode:** Horizontal (long-travel)**Application:** Automated Parts Loader

22

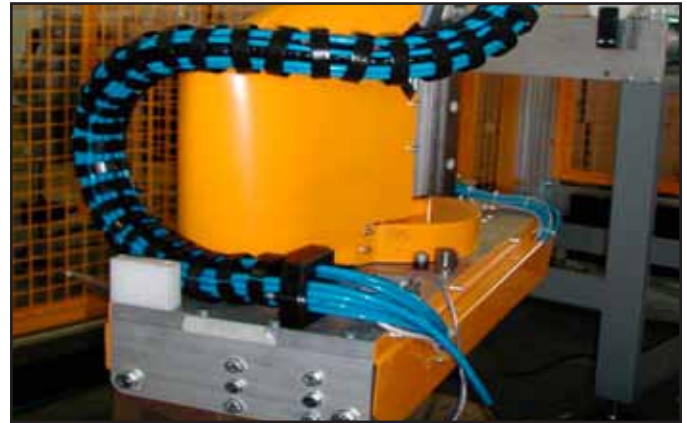
**Product:** UNIFLEX**Operating Mode:** Vertical (loop-up)**Application:** Cutting/Routing Machinery

23



**Product:** ROBOTRAX  
**Operating Mode:** Vertical & Rotating  
**Application:** Telescope

24



**Product:** ROBOTRAX  
**Operating Mode:** Rotary  
**Application:** Parts Picker

25



**Product:** ROBOTRAX  
**Operating Mode:** 3D  
**Application:** Parts Picker

26



**Product:** ROBOTRAX  
**Operating Mode:** 3D  
**Application:** Cut Off Saw

27



**Product:** ROBOTRAX  
**Operating Mode:** Multi-Axis  
**Application:** Parts Loader

28



**Product:** ROBOTRAX  
**Operating Mode:** Multi-Axis  
**Application:** Parts Loader/Picker

29



**Product:** ROBOTRAX  
**Operating Mode:** Vertical & Rotary  
**Application:** Pick & Place

30



**Product:** ROBOTRAX  
**Operating Mode:** Multi-Axis  
**Application:** Parts Loader/Picker

31



**Product:** ROBOTRAX  
**Operating Mode:** 3D  
**Application:** Major Motion Picture (fx umbilical prop)

32



**Product:** PLASTITRAK  
**Operating Mode:** Horizontal (unsupported side-mount)  
**Application:** Machine Tool

33



**Product:** PROFILE  
**Operating Mode:** Multi-Axis  
**Application:** Pick & Place

34



**Product:** PROFILE  
**Operating Mode:** Horizontal (side-mount)  
**Application:** Machine Tool

35



**Product:** PROFILE  
**Operating Mode:** Vertical (loop-up) + Horizontal + Semi-Rotary  
**Application:** Process Equipment

36



**Product:** PROTUM  
**Operating Mode:** Vertical (loop-up) & Horizontal  
**Application:** Custom Machinery

37



**Product:** PROTUM  
**Operating Mode:** Horizontal  
**Application:** Cutting/Punching Machinery

38





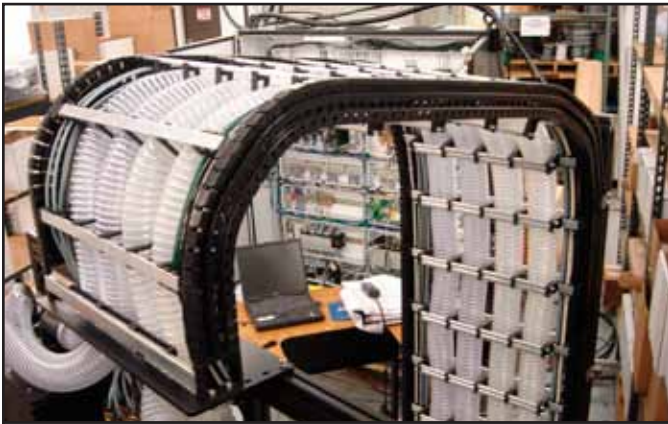
**Product:** QUANTUM  
**Operating Mode:** Horizontal (long travel)  
**Application:** Steel/Aluminum Mills

39



**Product:** QUANTUM  
**Operating Mode:** Horizontal (off-the-floor)  
**Application:** Portable Sawmill

40



**Product:** QUANTUM  
**Operating Mode:** Horizontal (loop-up)  
**Application:** Factory Automation

41



**Product:** QUANTUM  
**Operating Mode:** Horizontal and Vertical (loop-up)  
**Application:** Pick & Place Automation

42



**Product:** QUANTUM  
**Operating Mode:** Horizontal (off-the-floor)  
**Application:** Pick & Place Robot

43



**Product:** QUANTUM  
**Operating Mode:** Horizontal  
**Application:** Factory Automation

44



**Product:** QUANTUM  
**Operating Mode:** Horizontal (on-the-floor)  
**Application:** Parts Magazine/Loader

45



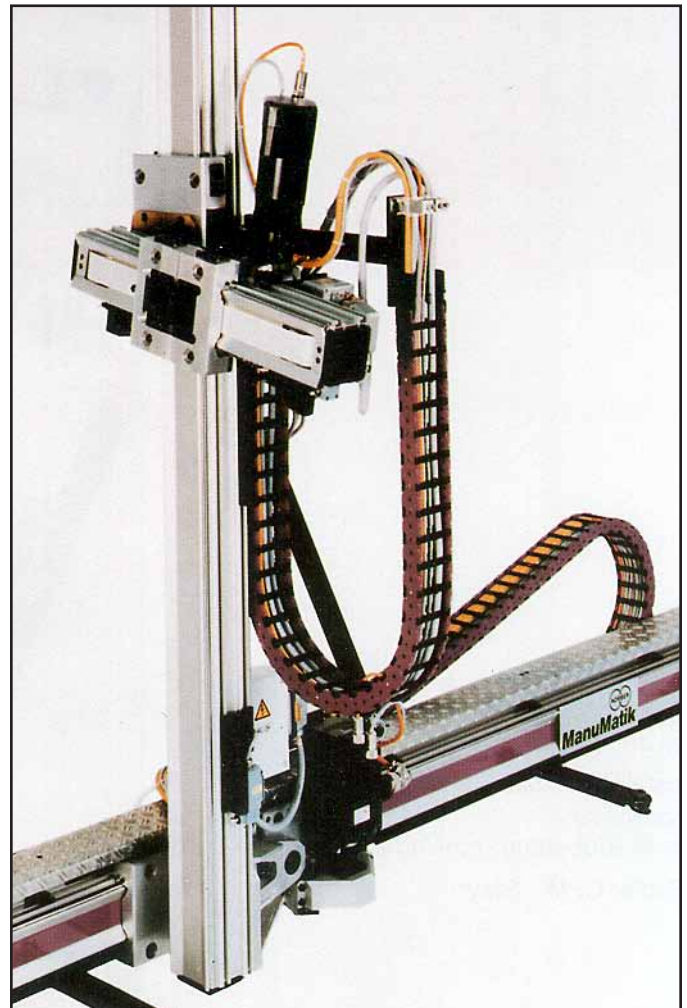
**Product:** QUANTUM  
**Operating Mode:** Horizontal  
**Application:** Process Automation

46



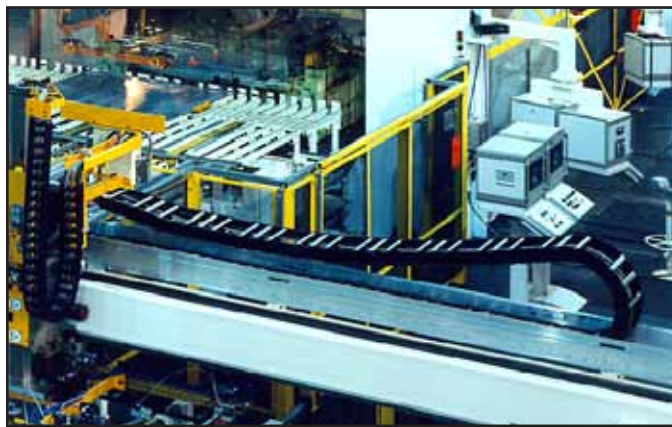
**Product:** VARITRAK MC  
**Operating Mode:** Horizontal/Tipping  
**Application:** Telescopic Boom

47



**Product:** VARITRAK MK  
**Operating Mode:** Horizontal & Vertical (loop-down)  
**Application:** Factory Automation

48

**Product:** VARITRAK MC**Operating Mode:** Horizontal (long-travel) & Vertical (loop-down)**Application:** Parts Loader/Factory Automation

49

**Product:** VARITRAK K**Operating Mode:** Horizontal (side-mounted)**Application:** On-Vehicle

50

**Product:** VARITRAK K**Operating Mode:** Vertical Hanging (hanging loop)**Application:** Automated Vehicle Wash Systems

51

**Product:** VARITRAK MK**Operating Mode:** Circular (side-mounted)**Application:** Machine Tool

52

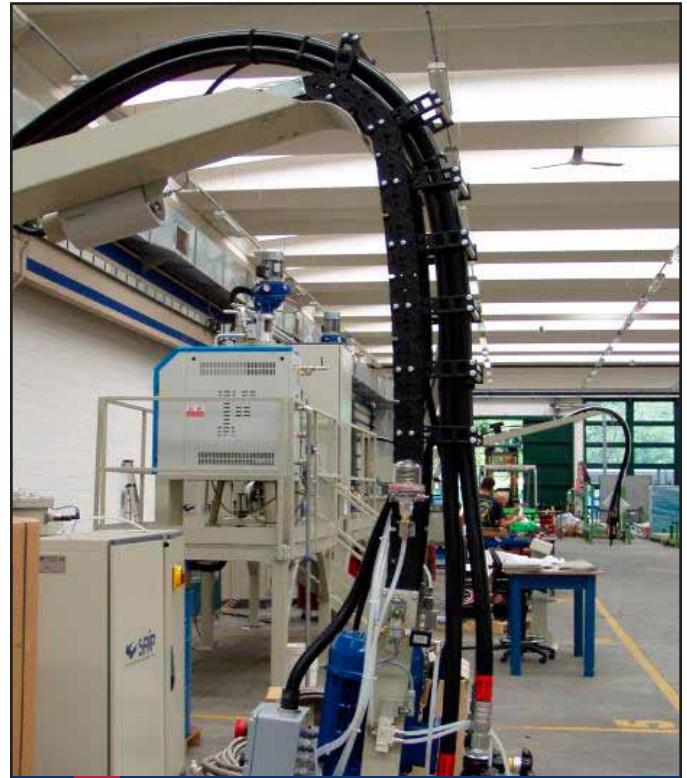
**Product:** VARITRAK MC**Operating Mode:** Multi-Chain-Band + Multi-Axis (vertical & horizontal)**Application:** Custom Machinery

53



**Product:** VARITRAK MK  
**Operating Mode:** Horizontal & Vertical (loop-up)  
**Application:** Factory Automation

54



**Product:** VARITRAK K  
**Operating Mode:** Hanging with cavity height extending bars Type RMA  
**Application:** Machinery Umbilical

55



**Product:** PLASTITRAK  
**Operating Mode:** Horizontal  
**Application:** Injection Molding Machinery

56



**Product:** QUANTUM  
**Operating Mode:** Horizontal (long-travel, off-the-floor)  
**Application:** Factory Pick & Place Automation

58



**Product:** VARITRAK MC  
**Operating Mode:** Horizontal (long-travel)  
**Application:** Processing Plant Equipment

57



**Product:** VARITRAK MK  
**Operating Mode:** Horizontal  
**Application:** Injection Molding Machinery

59



**Product:** CONDUFLEX  
**Operating Mode:** Rotating/Tipping (loop-up)  
**Application:** Vertical Lifting Platform

60



**Product:** CONDUFLEX  
**Operating Mode:** Horizontal/Tipping  
**Application:** Telescopic Boom Lift

62



**Product:** PLASTITRAK  
**Operating Mode:** Vertical (loop-down)  
**Application:** Fork-Lift

61



**Product:** VARITRAK MC  
**Operating Mode:** Horizontal (quad-band, long-travel)  
**Application:** Testing & Motion Simulation

63



**Product:** VARITRAK MC (quad-band)  
**Operating Mode:** Horizontal (quad-band, long-travel)  
**Application:** Testing & Motion Simulation

64



**Product:** VARITRAK MK & QUANTUM  
**Operating Mode:** Rotary (hanging loop)  
**Application:** Aerospace

65



**Product:** VARITRAK K  
**Operating Mode:** Multi-Axis  
**Application:** Material Handling

66

**Product:** VARITRAK MC**Operating Mode:** Horizontal (long-travel, off-the-floor)**Application:** Material Handling

67

**Product:** VARITRAK MC**Operating Mode:** Horizontal (long-travel, on-the-floor)**Application:** Machine Tool

68

**Product:** VARITRAK MC**Operating Mode:** Horizontal (long-travel, on-the-floor)**Application:** Special Machinery

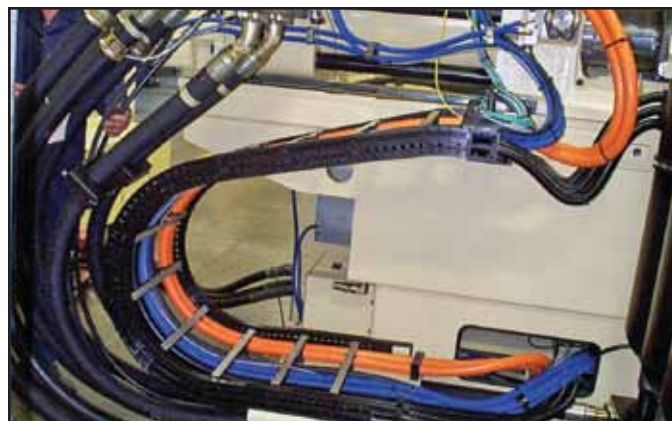
69

**Product:** VARITRAK MK**Operating Mode:** Horizontal**Application:** Material Handling

70

**Product:** VARITRAK MC**Operating Mode:** Horizontal (self-supporting)**Application:** Horizontal Drilling and Boring

71

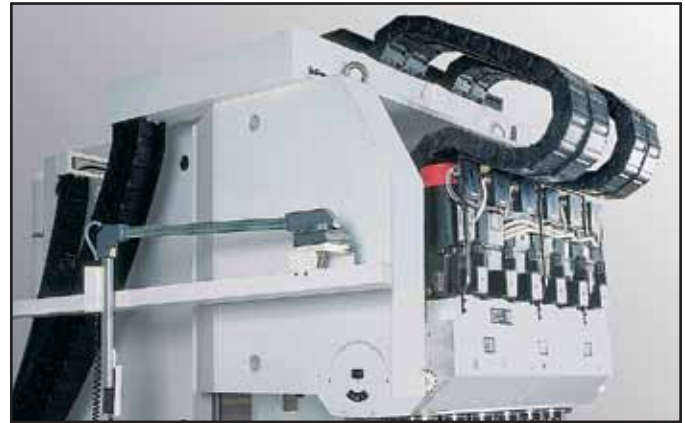
**Product:** QUANTUM**Operating Mode:** Horizontal

72



**Product:** VARITRAK MT  
**Operating Mode:** Horizontal  
**Application:** Machine Tool

73



**Product:** VARITRAK MT  
**Operating Mode:** Vertical (loop-out, hanging)  
**Application:** Machine Tool

74



**Product:** VARITRAK MT  
**Operating Mode:** Horizontal (unsupported, off-the-floor)  
**Application:** Cutting Table

75



**Product:** VARITRAK MT  
**Operating Mode:** Horizontal & Vertical (loop-up)  
**Application:** Cutting Machinery

76





**Product:** VARITRAK MT  
**Operating Mode:** Horizontal (nested)  
**Application:** Special Machinery

77



**Product:** VARITRAK MT with RMD aluminum lids  
**Operating Mode:** Horizontal (inclined)  
**Application:** Machining Center

78



**Product:** UNIFLEX BT  
**Operating Mode:** Horizontal (side-mount) & Horizontal (nested-chains)  
**Application:** Custom Machinery

79



**Product:** VARITRAK MT with RMD aluminum lids  
**Operating Mode:** Horizontal  
**Application:** Cutting/Routing Machinery

81



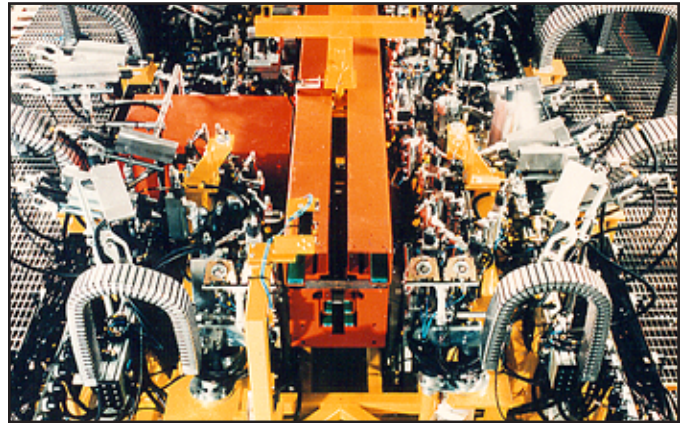
**Product:** VARITRAK MT  
**Operating Mode:** Vertical (loop-up) & Horizontal  
**Application:** Large Machining Centers

80



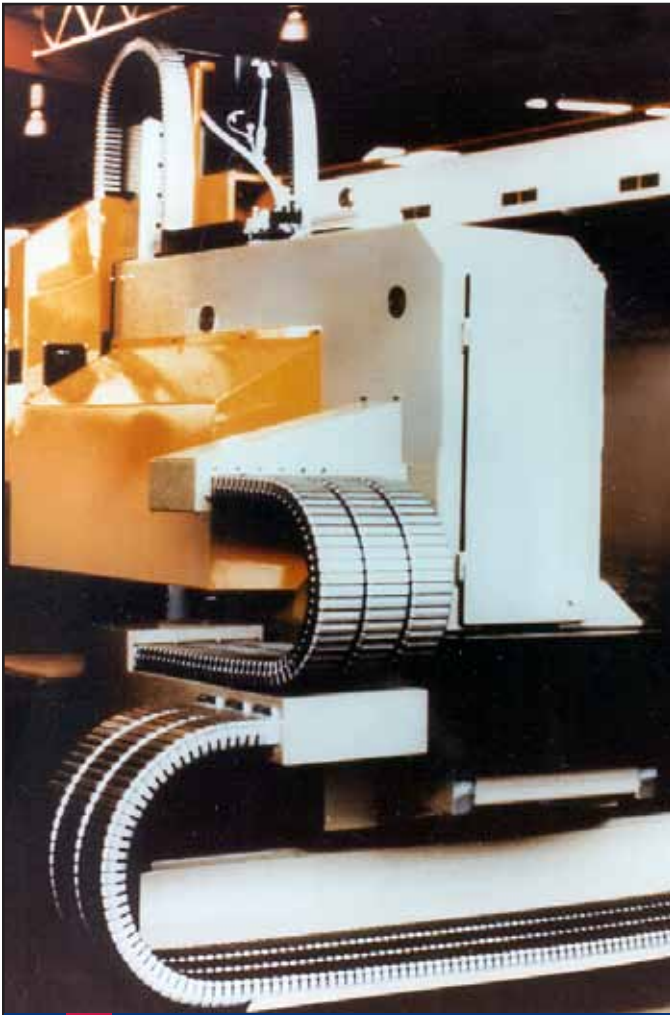
**Product:** CONDUFLEX  
**Operating Mode:** Horizontal (on-the-floor)  
**Application:** **Turning Centers**

82



**Product:** CONDUFLEX  
**Operating Mode:** Vertical (loop-up)  
**Application:** **Factory Automation**

83



**Product:** CONDUFLEX  
**Operating Mode:** Horizontal (side by side) & Vertical (loop-up)  
**Application:** **Machine Tool**

85



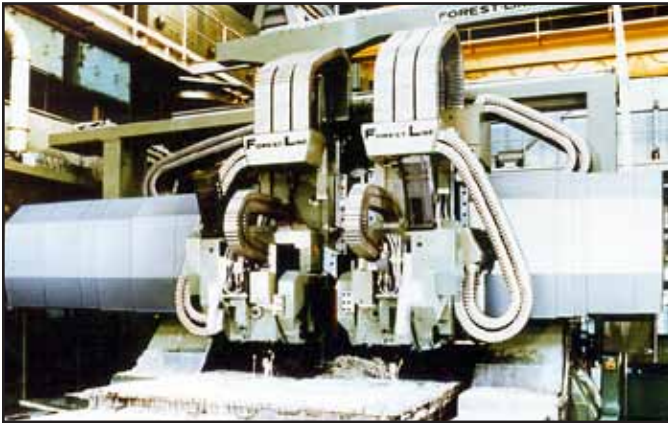
**Product:** CONDUFLEX  
**Operating Mode:** Multi-Axis (S-configuration)  
**Application:** **Factory Automation**

84

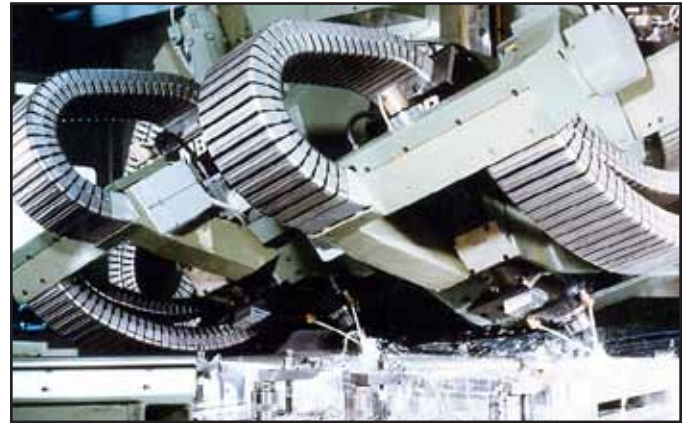


**Product:** CONDUFLEX  
**Operating Mode:** Horizontal (nested)  
**Application:** **Testing & Simulation**

86

**Product:** CONDUFLEX**Operating Mode:** Vertical (loop-up & hanging) & Horizontal (nested)**Application:** Machine Tool

87

**Product:** CONDUFLEX**Operating Mode:** Horizontal (unsupported, nested)**Application:** Machining Center

88

**Product:** VARITRAK S**Operating Mode:** Horizontal**Application:** Large Heavy Duty Saw

89

**Product:** VARITRAK S with stainless steel chip cover**Operating Mode:** Horizontal (unsupported)**Application:** Turning Center

90

**Product:** VARITRAK S tube style with RMD aluminum lids**Operating Mode:** Vertical (loop-up, tandem) and Horizontal**Application:** Machining Center

91



**Product:** VARITRAK MC  
**Operating Mode:** Horizontal (long-travel, off-the-floor)  
**Application:** Material Handling

92



**Product:** VARITRAK S & ROBOTRAX  
**Operating Mode:** Vertical (loop-down) and 3D  
**Application:** Process Equipment

94



**Product:** VARITRAK S  
**Operating Mode:** Horizontal (on-the-floor, multi-chain-band)  
**Application:** Steel Mill Process Equipment

93



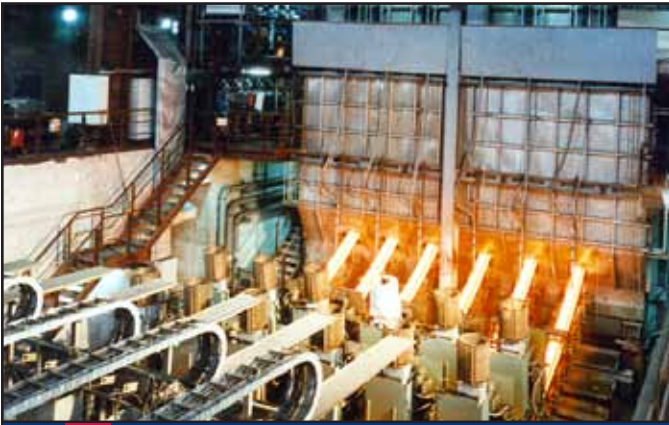
**Product:** VARITRAK S  
**Operating Mode:** Horizontal (RollerGlide<sup>KS</sup>, tandem)  
**Application:** Steel Mill Process Equipment

96



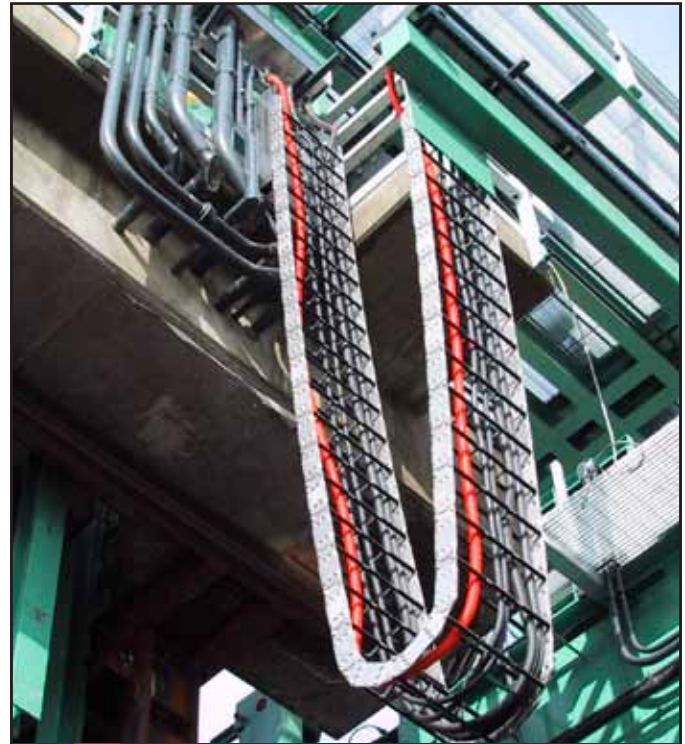
**Product:** VARITRAK S  
**Operating Mode:** Horizontal (on-the-floor)  
**Application:** Steel Processing Equipment

95



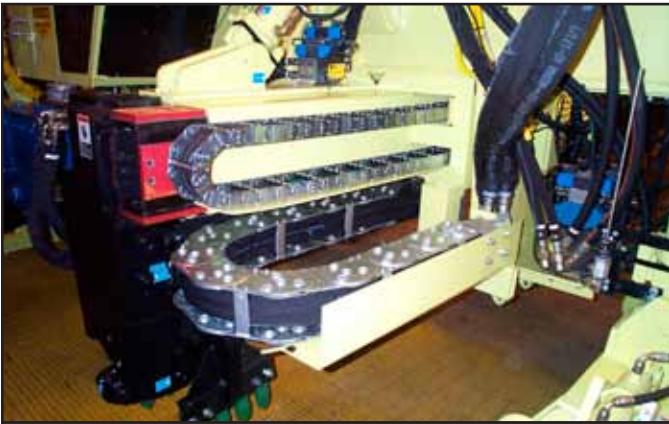
**Product:** VARITRAK S  
**Operating Mode:** Horizontal (off-the-floor)  
**Application:** Steel Mill Process Equipment

97



**Product:** VARITRAK S  
**Operating Mode:** Vertical (hanging, loop-down)  
**Application:** Department of Public Works

98



**Product:** VARITRAK S  
**Operating Mode:** Horizontal & Horizontal (side-mounted)  
**Application:** Railroad Maintenance Equipment

99



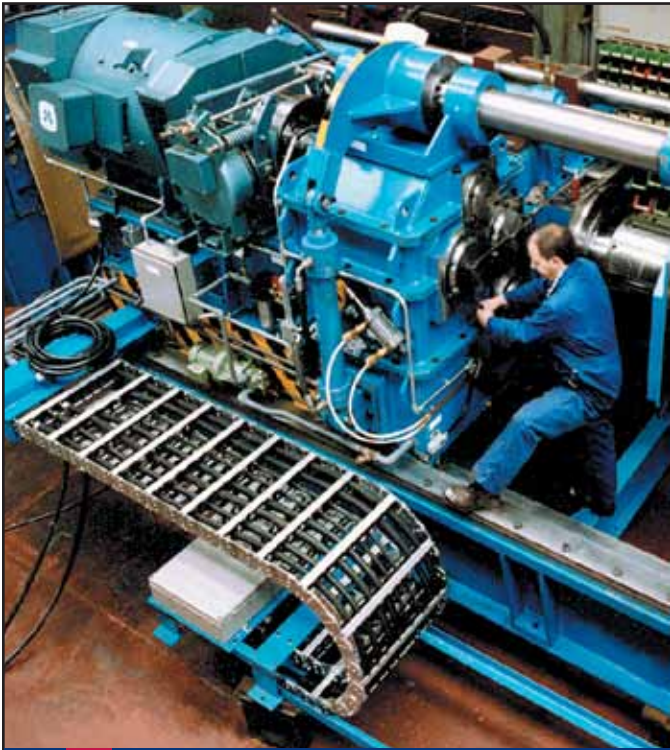
**Product:** VARITRAK MC  
**Operating Mode:** Horizontal (long-travel)  
**Application:** Ship to Shore Cranes

101



**Product:** VARITRAK S  
**Operating Mode:** Horizontal (with RMA Extended Cavity Height System)  
**Application:** Horizontal Drilling/Boring

100



**Product:** VARITRAK S  
**Operating Mode:** Horizontal (on-the-floor)  
**Application:** Turning Center

102



**Product:** VARITRAK S  
**Operating Mode:** Horizontal (unsupported) and Vertical  
**Application:** Special Process Machinery

103



**Product:** VARITRAK S  
**Operating Mode:** Horizontal (opposed)  
**Application:** Special Machinery

104



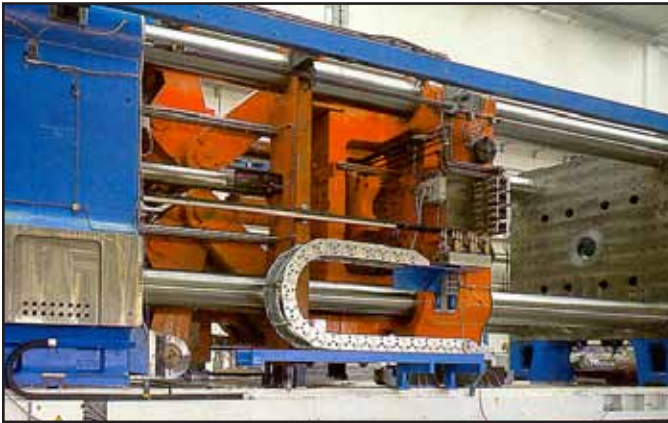
**Product:** VARITRAK S  
**Operating Mode:** Horizontal (on-the-floor)  
**Application:** Process Machinery

105



**Product:** VARITRAK S  
**Operating Mode:** Horizontal (side-mounted, sliding)  
**Application:** Off-Shore Petrochemical

106



**Product:** VARITRAK S  
**Operating Mode:** Horizontal  
**Application:** Injection Molding Machinery

107



**Product:** VARITRAK S & CONDUFLEX  
**Operating Mode:** Horizontal (off & on-the-floor) and Vertical (loop-up)  
**Application:** Custom Machinery

109



**Product:** VARITRAK S  
**Operating Mode:** Horizontal (side-mounted, suspended)  
**Application:** Off-Shore Petrochemical

108



**Product:** TOTALTRAX featuring VARITRAK S with Rolling Carriage System  
**Operating Mode:** Horizontal (long travel, multi-chain-band)  
**Application:** Petrochemical Production Equipment

110



**Product:** VARITRAK S  
**Operating Mode:** Multi-Axis, Horizontal & Vertical  
**Application:** Material Handling

111



**Product:** VARITRAK S  
**Operating Mode:** Horizontal (long travel, rolling carriage system)  
**Application:** Petrochemical Production Equipment **112**



**Product:** VARITRAK S with Rolling Carriage System  
**Operating Mode:** Horz. (super-duty, long travel, multi-chain-band)  
**Application:** Petrochemical Production Equipment **113**



**Product:** VARITRAK S  
**Operating Mode:** Horizontal (multi-chain-band)  
**Application:** Off-Shore Oil Production Platform **114**



**Product:** VARITRAK S  
**Operating Mode:** Horizontal (multi-chain-band + nested)  
**Application:** Precision Measurement Equipment **115**



**Product:** VARITRAK S  
**Operating Mode:** Horizontal (nested)  
**Application:** Production/Process Equipment **116**



**Product:** VARITRAK S  
**Operating Mode:** Horizontal (driven with sprocket)  
**Application:** Special Machinery **117**



**Product:** VARITRAK S**Operating Mode:** Horizontal (multi-chain-band + nested)**Application:** Off-Shore Oil Production Platform

118

**Product:** VARITRAK MC**Operating Mode:** Horizontal (long travel)**Application:** Ship to Shore Crane

119

**Product:** VARITRAK S**Operating Mode:** Horizontal (multi-chain-band + nested)**Application:** Off-Shore Oil Production Platform

120

**Product:** VARITRAK S**Operating Mode:** Horizontal (multi-chain-band + nested)**Application:** Steel/Aluminum Mill Equipment

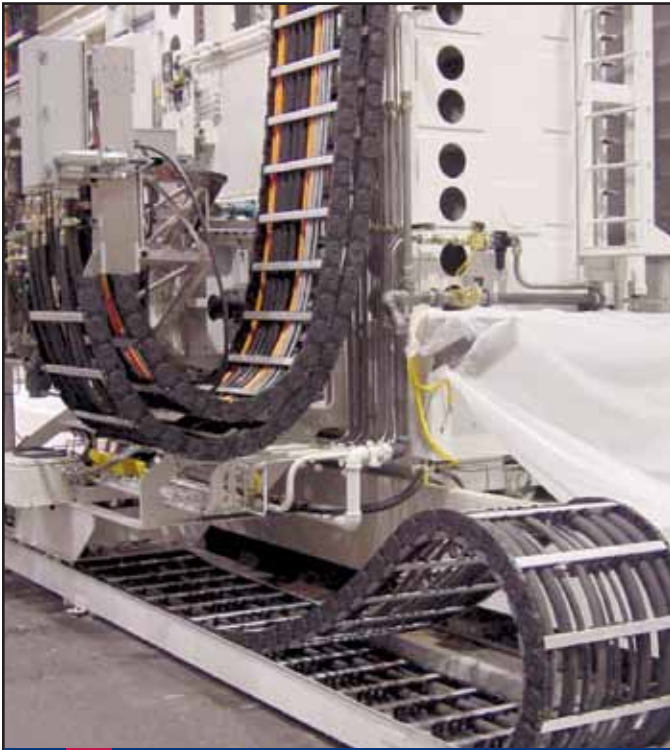
121

**Product:** VARITRAK S**Operating Mode:** Horizontal (multi-chain-band)**Application:** Turn-key Oil Production Equipment

122

**Product:** VARITRAK S**Operating Mode:** Horizontal**Application:** Large Crane

123



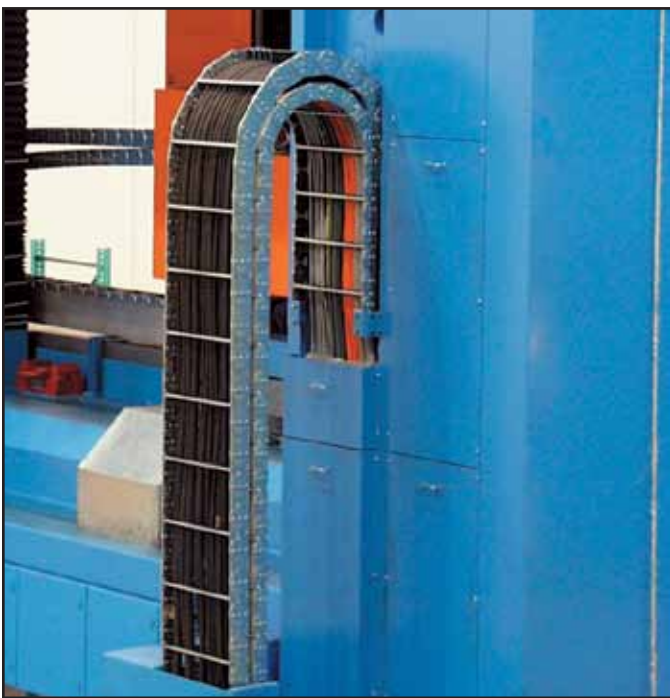
**Product:** VARITRAK MC  
**Operating Mode:** Horizontal (long-travel) & Vertical (nested, hanging loop)  
**Application:** Custom Aerospace Production Machinery 124



**Product:** VARITRAK S  
**Operating Mode:** Horizontal (unsupported & nested)  
**Application:** Horizontal Drilling and Boring 125



**Product:** VARITRAK S  
**Operating Mode:** Horizontal (unsupported & nested)  
**Application:** Machine Tool 126



**Product:** VARITRAK S  
**Operating Mode:** Vertical (loop-up & nested)  
**Application:** Machine Tool 127



**Product:** VARITRAK S  
**Operating Mode:** Horizontal (triple nested with IDC<sup>KS</sup>)  
**Application:** Horizontal Drilling and Boring 128

Specifications are subject to change without notice.  
 KSA-0810-GC



**Product:** VARITAK MC with KABELSKATE<sup>KS</sup> Extended Travel System

**Operating Mode:** Horizontal (extremely long travel)

**Application:** Various

129



**Product:** QUANTUM with KABELSKATE<sup>KS</sup> Extended Travel System

**Operating Mode:** Horizontal (extremely long travel)

**Application:** Ship to Shore Cranes

130



**Product:** VARITRAK S with DYNAGLIDE<sup>KS</sup> Extended Travel System

**Operating Mode:** Horizontal (long travel)

**Application:** Various

131



**Product:** VARITRAK K with ROLLERGLIDE<sup>KS</sup> Extended Travel System

**Operating Mode:** Horizontal (long travel)

**Application:** Process Automation

132



**Product:** VARITRAK MC with with Type 228<sup>KS</sup> Rolling-Carriage System

**Operating Mode:** Horizontal (long travel)

**Application:** Production Equipment

133



**Product:** VARITRAK S with Type 225<sup>KS</sup> Nested Rolling-Carriage System

**Operating Mode:** Horizontal (long travel)

**Application:** Machine Tool

134