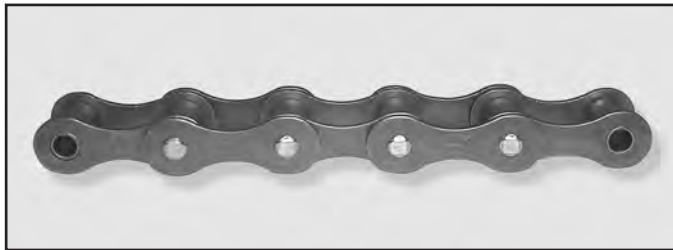


Tsubaki offers both MR type and RF type steel roller chains for agricultural applications. MR type steel roller chains have been designed to replace malleable chains. These chains can be used with the existing sprockets for malleable chains.

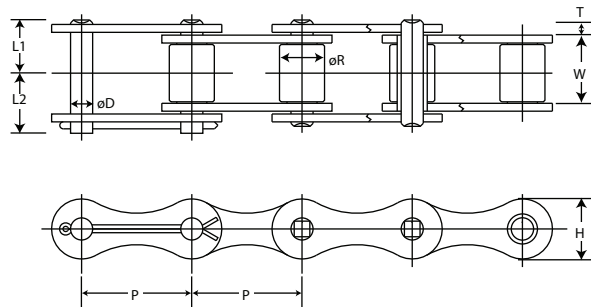
They have higher tensile strength, longer life and provide smoother operation for drives and conveyors than malleable chains. Tsubaki MR type steel roller chains with various attachments can also be used for material handling operations.

Tsubaki RF type steel roller chains have greater wear resistance and higher tensile strength than MR type steel roller chains.

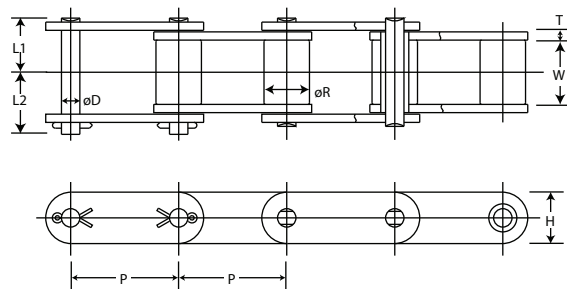
Section B



MR Type



RF Type (CA550 and CA620)



All dimensions in inches unless otherwise stated.

Chain Number	Pitch P	Roller Dia. R	Width Between Inner Link Plates W	Link Plate			Pin			Minimum Tensile Strength (lbs.)	Approx. Weight (lbs./ft.)
				Thickness T	Height H	Dia. D	Length L ₁ + L ₂	Length L ₁	Length L ₂		
MR32	1.150	0.450	0.625	0.060	0.500	0.175	1.083	0.514	0.569	1,980	0.50
MR42	1.375	0.562	0.750	0.098	0.750	0.275	1.413	0.663	0.750	6,600	1.08
MR52	1.500	0.600	0.875	0.098	0.640	0.225	1.543	0.724	0.819	4,400	1.06
MR55	1.630	0.700	0.875	0.098	0.650	0.225	1.543	0.724	0.819	6,380	1.10
MR45	1.630	0.600	0.875	0.098	0.650	0.225	1.543	0.724	0.819	4,400	0.97
MR62	1.650	0.750	1.000	0.098	0.660	0.225	1.606	0.789	0.817	6,380	1.26
CA550	1.630	0.661	0.795	0.106	0.787	0.281	1.504	0.683	0.821	11,200	1.31
CA620	1.654	0.696	0.984	0.125	0.787	0.281	1.780	0.829	0.951	11,200	1.60

Standard Attachments



Roller Link with
A-1
Attachment

Roller Link with
K-1
Attachment

Pin Link with
A-1
Attachment

Pin Link with
K-1
Attachment

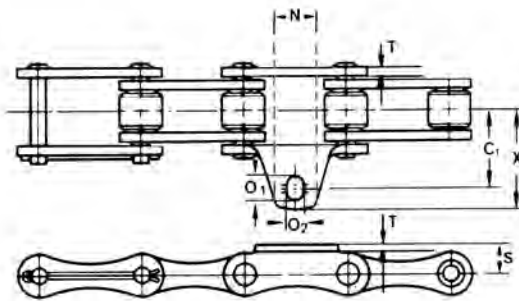
Roller Link with
SA-1
Attachment

Roller Link with
SK-1
Attachment

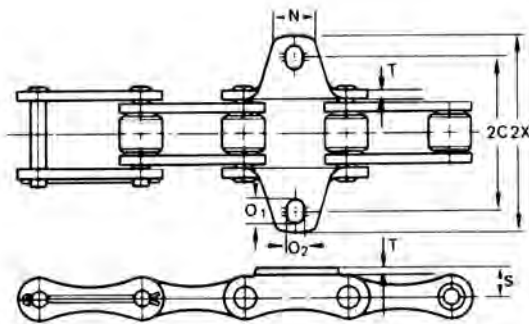
Pin Link with
SA-1
Attachment

Pin Link with
SK-1
Attachment

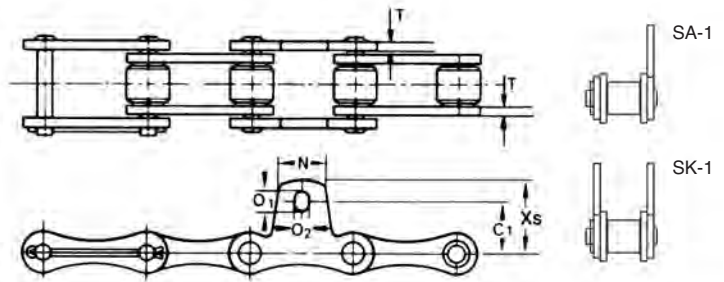
A-1 Attachment



K-1 Attachment



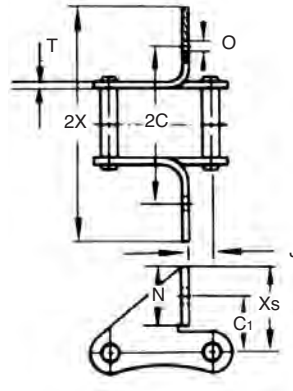
SA-1/SK-1 Attachment



All dimensions in inches unless otherwise stated.

Chain Number	A, SA, K and SK Attachment Dimensions									Additional Wt./Attachment	
	2C	C ₁	N	O ₁	O ₂	S	T	2X	X _s	A, SA Attachment (lbs.)	K, SK Attachment (lbs.)
MR32	1.687	0.681	0.669	0.268	0.205	0.339	0.059	2.358	1.020	0.007	0.014
MR42	2.126	0.929	0.929	0.398	0.272	0.551	0.098	2.953	1.346	0.029	0.058
MR52	2.311	0.870	0.630	0.335	0.272	0.449	0.098	3.012	1.213	0.022	0.044
MR55	2.126	0.780	0.866	0.398	0.272	0.449	0.098	2.913	1.177	0.026	0.052
MR45	2.126	0.780	0.866	0.398	0.272	0.449	0.098	2.913	1.177	0.022	0.044
MR62	2.626	0.969	0.945	0.520	0.272	0.449	0.098	3.752	1.520	0.024	0.048
CA550	Attachments available on a make-to-order basis. Contact Tsubaki for specifications.										
CA620	Attachments available on a make-to-order basis. Contact Tsubaki for specifications.										

'SD' ATTACHMENT PIN LINKS



All dimensions in inches unless otherwise stated.

Chain Number	SD Attachment Dimensions								SD Attach. Additional Weight (lbs.)
	2C	C ₁	J	N	O	T	2X	X _s	
MR52	2.283	0.787	0.039	0.630	0.260	0.098	3.386	1.102	0.040
MR55	2.283	0.787	0.039	0.630	0.260	0.098	3.386	1.102	0.042
MR45	2.283	0.787	0.039	0.630	0.260	0.098	3.386	1.102	0.042

Section B