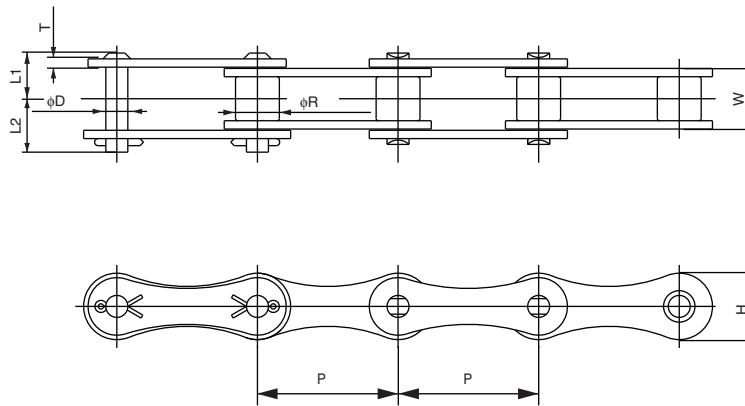


An economical choice in drive applications where the speed is low, the load is moderate or where the center is relatively long. Tsubaki double pitch agricultural drive chains are also available in stainless steel and nickel plated anti-corrosive coatings.



All dimensions in inches unless otherwise stated.

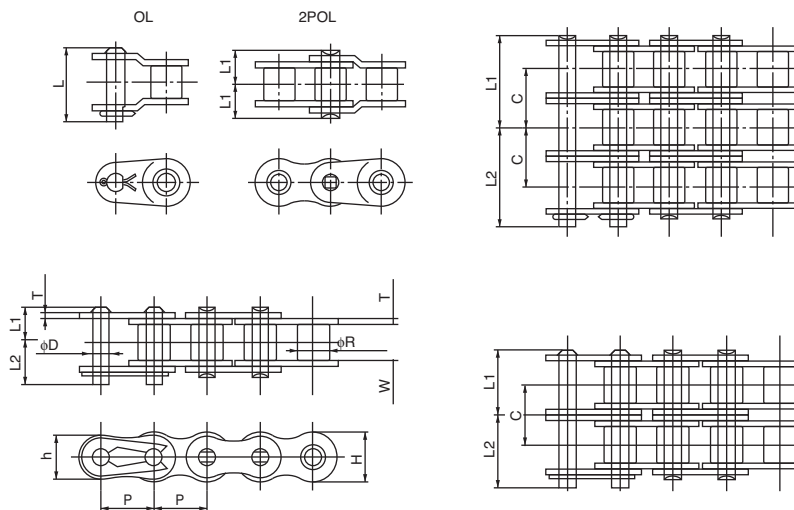
Chain Number	Pitch P	Roller Diameter R	Width Between Inner Link Plates W	Link Plate		Pin			Average Tensile Strength (lbs.)	Approximate Weight (lbs./ft.)	Number of links per 10 feet	
				Thickness T	Height H	Diameter D	Length L ₁ + L ₂	Length L ₁				Length L ₂
A2040	1.000	0.312	0.312	0.060	0.472	0.156	1.083	0.325	0.380	3,700	0.26	120
A2050	1.250	0.400	0.375	0.080	0.590	0.200	1.413	0.406	0.469	6,100	0.42	96
A2060	1.500	0.469	0.500	0.094	0.709	0.234	1.543	0.506	0.600	8,500	0.63	80
A2080	2.000	0.625	0.625	0.125	0.906	0.312	1.543	0.640	0.754	14,500	1.03	60

An introduction to Agri-Tuff Roller Chain

Agri-Tuff chain is designed specifically for use in agricultural applications.

Features of Agri-Tuff chain include:

- Quad stake riveted for increased link plate adhesion.
- Hardened pin for greater wear life and shock load protection.
- Solid roller for durability and strength.

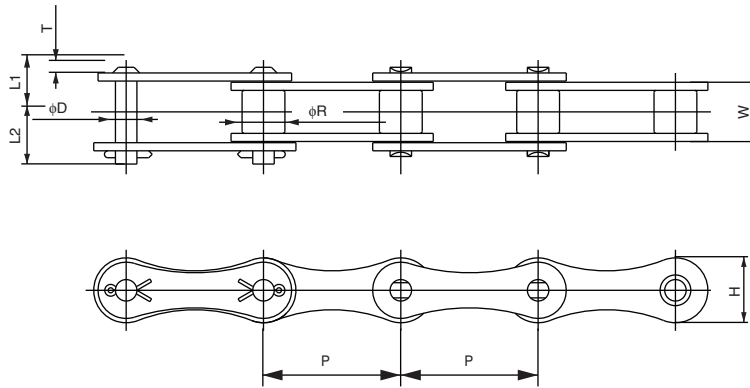


All dimensions in inches unless otherwise stated.

Chain Number	Pitch P	Roller Diameter R	Width Between Inner Link Plates W	Link Plate			Pin			Transverse Pitch C	Average Tensile Strength (lbs.)	Approximate Weight (lbs./ft.)	Number of links per 10 feet	
				Thickness T	Height H	Height h	Diameter D	Length L ₁ + L ₂	Length L ₁					Length L ₂
Single Strand														
RS40AT	0.500	0.313	0.313	0.059	0.472	0.409	0.156	0.717	0.325	0.392	-	4,290	0.43	240
RS50AT	0.625	0.400	0.375	0.079	0.591	0.512	0.200	0.878	0.406	0.472	-	7,050	0.70	192
RS60AT	0.750	0.469	0.500	0.094	0.713	0.614	0.235	1.087	0.506	0.581	-	9,920	1.03	160
RS60HAT	0.750	0.469	0.500	0.126	0.713	0.614	0.235	1.240	0.573	0.667	-	9,920	1.21	160
RS80AT	1.000	0.625	0.625	0.126	0.949	0.819	0.312	1.398	0.640	0.758	-	17,640	1.79	120
Double Strand														
RS40-2AT	0.500	0.313	0.313	0.059	0.472	0.409	0.156	1.283	0.608	0.675	0.567	8,580	0.85	240
RS50-2AT	0.625	0.400	0.375	0.079	0.591	0.512	0.200	1.595	0.762	0.833	0.713	14,100	1.39	192
RS60-2AT	0.750	0.469	0.500	0.094	0.713	0.614	0.235	2.008	0.955	1.053	0.898	19,840	2.04	160
RS60-2HAT	0.750	0.469	0.500	0.126	0.713	0.614	0.235	2.264	1.083	1.181	1.028	19,840	2.41	160

Note: RS80AT connecting link uses cotter pins.

Double Pitch
Agri-Tuff Roller Chain



All dimensions in inches unless otherwise stated.

Chain Number	Pitch P	Roller Diameter R	Width Between Inner Link Plates W	Link Plate		Pin			Average Tensile Strength (lbs.)	Approximate Weight (lbs./ft.)	Number of links per 10 feet	
				Thickness T	Height H	Diameter D	Length L ₁ + L ₂	Length L ₁				Length L ₂
RS2040AT	1.000	0.313	0.313	0.059	0.472	0.156	0.705	0.325	0.380	3,700	0.26	120
RS2050AT	1.250	0.400	0.375	0.079	0.591	0.200	0.875	0.406	0.469	6,100	0.42	96
RS2060AT	1.500	0.469	0.500	0.094	0.709	0.235	1.106	0.506	0.600	8,500	0.63	80