

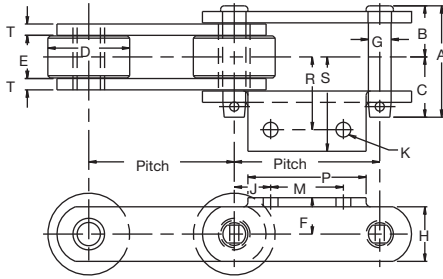
Tsubaki keeps the beverages flowing at breweries, soft drink bottlers, and juice manufacturers throughout the world. We make chain that is used in bottlewashers, pasteurizers, and sterilizers. There are hundreds of specifications and configurations that can be used in these applications, depending on the type and capacity of equipment, size of bottles, and many other factors. We have a wide range of chains available, or we can make a chain to your exact specifications.



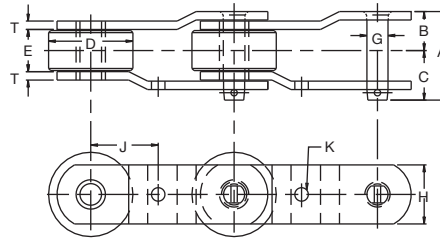
## Factors to Consider

Bottlewasher/Pasteurizer Chains are used to convey large quantities of bottles at a slow speed through the washer or pasteurizer. Chains are generally matched and tagged to hold bottle racks in exact position between chains without skewing. Chain and attachment tolerances are very important. Usually the chains are constructed of carbon steel for increased economy. Since the environment is wet, stainless steel or plated parts can be used to improve corrosion resistance. Chains can be almost any pitch size; however, they are commonly in the 4" to 6" range. Attachments are usually mid-pitch holes or A styles, but may be made to fit your units. Sterilizers use two strands of chain. Bottles are sterilized by steam, which creates a wet, high-temperature environment (200° F). That means chains must be constructed from temperature- and corrosion-resistant materials, such as stainless steel. Sterilizer chains frequently have a 4" to 6" pitch.

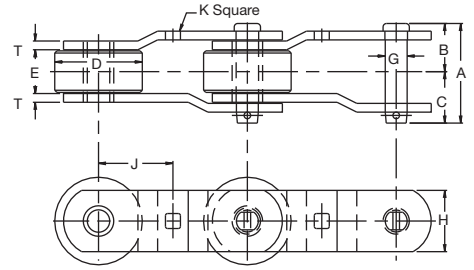
**40001, 60001, 60002**



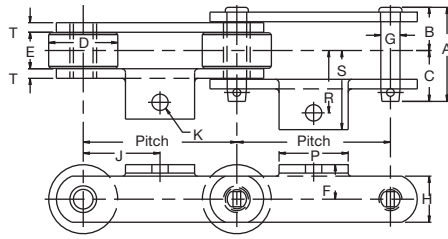
**40002**



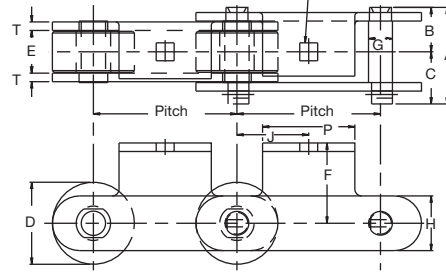
**40003, 42501**



**50001, 52502**



**52501**



**Bottle Washing, Pasteurizing and Sterilizing Chains**

All dimensions are in inches unless otherwise indicated.

Chain No.	Pitch	Width				Roller	Pin	Sidebar			Attachment						Bearing Area (in. <sup>2</sup> )	Average Ultimate Stgth. (lbs.)	Max. Work Load (lbs.)	Approx. Weight (lbs./ft.)
		Overall	Pin Head to CL	Pin End to CL	Inside			Dia.	Hgt.	Thk.	F	P	J	M	R	S				
		A	B	C	E	D	G	H	T	F	P	J	M	R	S	K				
40001	4.000	2.91	1.31	1.60	1.25	2.00	.56	1.50	.25	1.00	3.25	1.00	2.00	2.00	2.59	.38	.97	27,000	3,440	7.4
40002	4.000	2.63	1.12	1.51	.94	2.50	.56	1.50	.31			2.00				.38	.69	50,000	3,075	7.8
40003	4.000	3.09	1.50	1.59	1.25	2.50	.56	1.50	.31			2.00				.43	1.03	31,000	3,995	10.6
42501	4.250	2.84	1.37	1.47	1.25	2.50	.56	1.75	.25			2.13				.43	1.03	31,000	3,825	8.9
50001	5.000	3.06	1.39	1.67	1.19	2.25	.63	1.50	.31	1.13	2.25	2.50		1.69	2.31	.50	1.01	43,000	3,995	8.0
52501	5.250	3.53	1.62	1.91	1.56	3.00	.88	2.00	.31	2.94	3.38	2.63				.66	1.89	47,000	6,890	15.2
52502	5.250	3.41	1.56	1.85	1.44	2.75	.63	1.50	.31	3.06	2.25	2.63		2.00	2.80	.53	1.26	37,000	4,645	11.0
60001	6.000	3.06	1.39	1.67	1.19	2.50	.63	1.50	.31	1.25	3.25	1.94	2.13	2.08	2.69	.38	1.01	46,000	3,995	8.3
60002	6.000	3.06	1.39	1.67	1.19	3.00	.63	1.50	.31	1.25	3.25	1.94	2.13	2.08	2.69	.38	1.01	46,000	3,995	9.7

To locate compatible sprockets for your chain, refer to the Product Cross-Reference at the back of this section.

Note: Dimensions are subject to change. Contact Tsubaki Technical Support to obtain certified prints for design and construction.