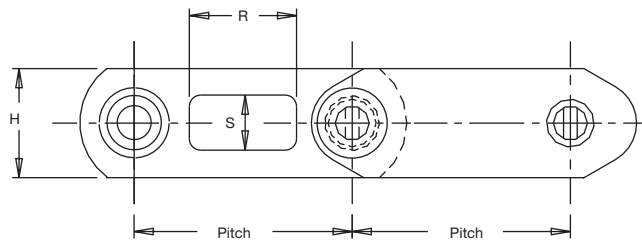
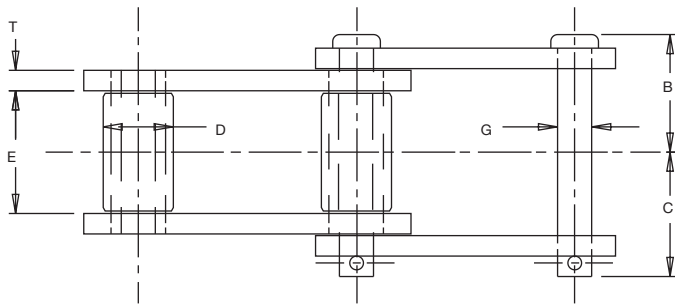


Standard Shuttle Car Chain



Standard Shuttle Car Chains Specifications

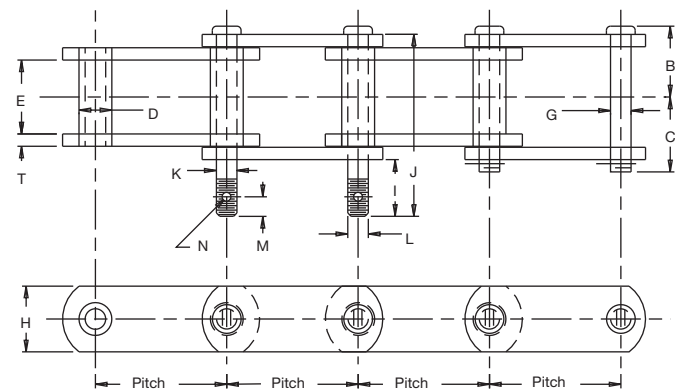
All dimensions are in inches unless otherwise indicated.

Chain No. ¹	Dwg. No.	Pitch	Space	Chain Width			Inside Width	Pins		Rollers		Sidebars			Attachments		Approx. Weight (lbs./ft.)
				Overall	Head to CL	End to CL		Dia.	Matl. ²	Dia.	Matl. ²	Thick.	Height	Matl. ²	R	S	
				(B+C)	B	C	E	G		D		T	H				
26001	17108	2.609	Ev. 6th	2.91	1.36	1.55	1.13	.56	AHT	1.13	ACH	.31	1.63	AHT	1.28	.66	6.3
26001	22304	2.609	Ev. 8th	2.91	1.36	1.55	1.13	.56	AHT	1.13	ACH	.31	1.63	AHT	1.28	.66	6.3
30701	22376	3.075	Ev. 6th	3.56	1.89	1.67	1.50	.63	AHT	1.25	ACH	.38	1.75	CHT	1.28	.66	8.8

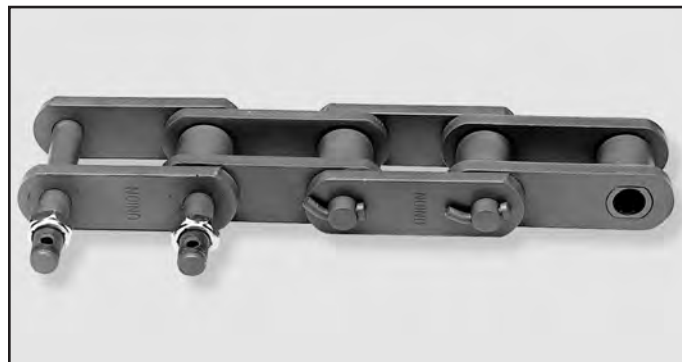
¹Chain number 26001 has the slotted attachment hole on the cotteder side only and Chain number 30701 has slotted attachment holes on both sides.

²Material: AHT = Alloy heat-treated; CHT = Carbon heat-treated.

Feeder Breaker Chain



Chain Number 30703



Feeder Breaker Chain Specifications

All dimensions are in inches unless otherwise indicated.

Chain No.	Dwg. No.	Pitch	Chain Width			Inside Width	Pins		Bushings		Sidebars			Attachments					Approx. Weight (lbs./ft.)	
			Over-all	Head to CL	End to CL		Dia.	Matl. ¹	Dia.	Matl. ¹	Thick.	Height	Matl. ¹	I	J	K	L	M		N
			(B+C)	B	C	E	G		D		T	H								
30703	19501	3.075	3.44	1.63	1.81	1.31	.68	AHT	1.25	CCH	.38	1.50	CHT	2.06	4.94	.67	.63	.50	.25	4.6

¹Material: CHT = Carbon heat-treated; ACH = Alloy case hardened; AHT = Alloy heat-treated.

To locate compatible sprockets for your chain, refer to the Product Cross-Reference at the back of this section.

Note: Dimensions are subject to change. Contact Tsubaki Technical Support to obtain certified prints for design and construction.

Section C