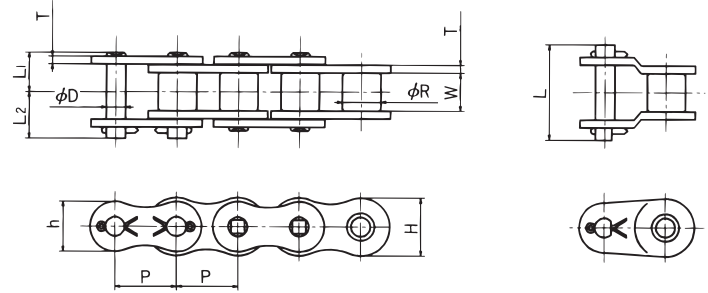


KT Cold-Resistant Chain
Specialty Chain

This chain can be used in colder temperatures than RS Roller Chain while offering identical horsepower ratings. This chain is constructed using high tensile alloy steel which makes it suitable for use in low temperatures. Working temperature range: -40°F ~ +140°F.



All dimensions in inches unless otherwise stated.

Chain Number	Pitch P	Roller Dia. R	Width Between Inner Link Plates W	Link Plate			Pin					Minimum Tensile Strength (lbs.)	Average Tensile Strength (lbs.)	Maximum Allowable Load (lbs.)	Approx. Weight (lbs./ft.)	Number of links per 10 feet
				Thickness T	Height H	Height h	Dia. D	Length L ₁ + L ₂	Length L ₁	Length L ₂	Offset Pin Length L					
RS35KT	0.375	0.200*	0.188	0.049	0.354	0.307	0.141	0.508	0.230	0.278	0.531	2,200	2,530	480	0.22	320
RS40KT	0.500	0.312	0.313	0.059	0.472	0.409	0.156	0.705	0.325	0.380	0.709	3,960	4,290	810	0.43	240
RS50KT	0.625	0.400	0.375	0.079	0.591	0.512	0.200	0.874	0.406	0.469	0.933	6,380	7,040	1,430	0.70	192
RS60KT	0.750	0.469	0.500	0.094	0.713	0.614	2.361	1.106	0.506	0.600	1.110	9,020	9,900	1,980	1.03	160
RS80KT	1.000	0.625	0.625	0.126	0.949	0.819	0.313	1.398	0.640	0.758	1.528	16,060	17,600	3,300	1.79	120
RS100KT	1.250	0.750	0.750	0.157	1.185	1.024	0.376	1.677	0.778	0.900	1.795	23,980	26,400	5,060	2.68	96
RS120KT	1.500	0.875	1.000	0.189	1.425	1.228	0.437	2.118	0.980	1.138	2.197	33,220	37,400	6,820	3.98	80
RS160KT	2.000	1.125	1.250	0.252	1.898	1.638	0.563	2.705	1.254	1.451	2.795	57,200	62,700	11,880	6.79	60

* RS35KT is rollerless. The dimension shown is for the bushing diameter.