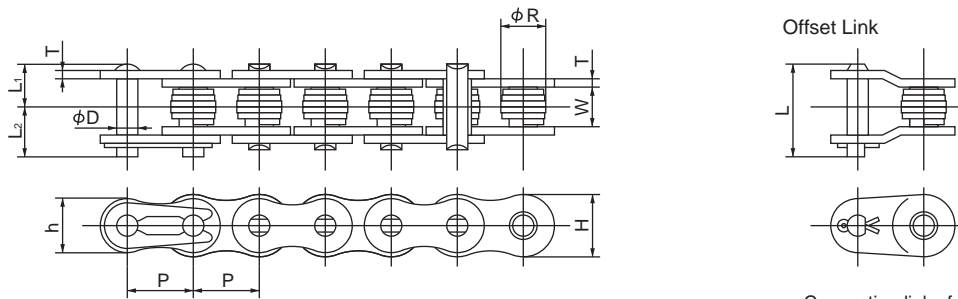
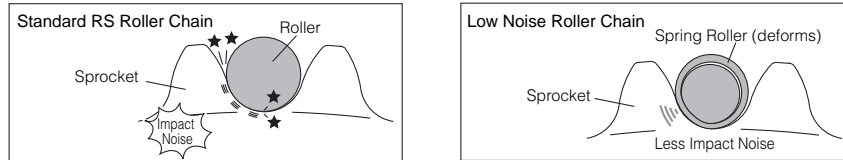


Low Noise (SN) Specialty Chain

Tsubaki's uniquely structured spring rollers are used for the chain rollers. When Tsubaki's SN Roller Chain engages with the sprocket, the spring roller deforms and absorbs the force of the impact. The lower impact force reduces impact noise between chain and sprocket resulting in lower noise levels. Compared with Tsubaki's standard RS Roller Chain (pre-lubricated), noise levels of SN Roller Chain are 6 - 8 dB lower. (In-house comparison testing). Dimensionally interchangeable with standard RS Roller Chain.



Connecting links for RS80SN are cotter pin-type.

All dimensions in inches unless otherwise stated.

Chain Number	Pitch P	Roller Dia. R	Width Between Inner Link Plates W	Link Plate			Pin					Average Tensile Strength (lbs.)	Maximum Allowable Load (lbs.)	Approx. Weight (lbs./ft.)	Number of links per 10 feet
				Thickness T	Height H	Height h	Dia. D	Length L ₁ + L ₂	Length L ₁	Length L ₂	Offset Pin Length L				
RS40SN	0.500	0.335	0.313	0.059	0.472	0.409	0.156	0.717	0.325	0.392	0.709	4,295	815	0.43	240
RS50SN	0.625	0.425	0.375	0.079	0.591	0.512	0.200	0.878	0.406	0.472	0.886	7,060	1,430	0.70	192
RS60SN	0.750	0.496	0.500	0.094	0.713	0.614	0.235	1.087	0.506	0.581	1.110	9,915	1,985	1.03	160
RS80SN	1.000	0.661	0.625	0.126	0.949	0.819	0.313	1.398	0.640	0.758	1.417	17,650	3,305	1.79	120

Note: When one-pitch offset links (OL) are used, the Max. Allowable Load becomes 65% of the values shown above.