

TSUBAKI GRIPPER CHAIN

For form, fill, and vacuum seal wrapping applications

Lower maintenance costs
Increased uptime
Increased productivity



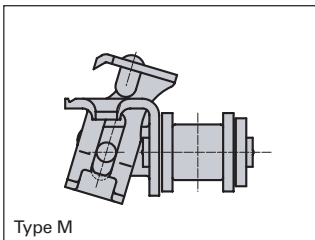
A formidable new force has taken hold of wrapping operations.

Our high-performance roller chain is now available with both conventional and innovative new side-swivel gripper attachments for form, fill, and vacuum seal applications.

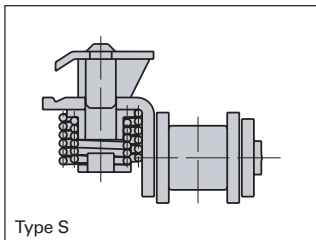
Enhanced Operation

Tsubaki gripper attachments feature reliable clamping mechanisms to ensure precise positioning. High-performance springs are designed to last more than 10 million cycles, even at high speeds. Our Type M attachment's side-swivel design allows optimal material feed-through to ensure your lines run smoother.

High-quality Standard attachments, which open straight up and down, are also available.



Type M



Type S

Exclusive! Quickly Cut to Length

Tsubaki is the only manufacturer to offer Gripper Chain with recessed riveted pins for easy chain length adjustment. Keep production rolling with less downtime.



Industry-Leading Spring Design for Outstanding Grip Performance

Made possible by using the best combination of grip force, toughness, and accuracy.

Quick, Uniform Start-Up

Factory pre-loading minimizes initial chain elongation. Colored connecting links are easy to identify while in service and convenient to install with spring clips.



Applicable Industries

Food: Ham, Sausages, Cheese, Bread, etc.
Electric: Electric wiring, Globes, etc.
Medical: Syringes, Medicine, etc.

Get a Grip on Truly Profitable Performance

Discover the difference Tsubaki's high-quality base chain makes in your bottom line.

- Lower maintenance costs
- Increased uptime
- Increased productivity

Tsubaki Base Chain Options

Nickel-Plated Chain

Nickel plating not only improves appearance but also gives the chain slight corrosion resistance. Therefore, it can be used in applications where there is exposure to water.

Nickel-Plated Lambda Chain

Special oil-impregnated bushings deliver long life with no lubrication. The result is reduced labor maintenance, better operating environments, and greater productivity.

Stainless Steel Chain

Tsubaki stainless steel corrosion resistant Gripper Chain is your solution for challenging environments. This chain combines proven design with wear-resistant hardened stainless steel components that extend service life and offer the highest load capacity of all stainless steel chains manufactured by Tsubaki.

Special Surface-Treated Chain (NEP)

This next-generation chain boasts the highest level of corrosion resistance among various plated and surface-treated chains and uses no toxic substances such as hexavalent chromium, thus reducing the impact on the environment.

Extended Service Life

FDA-approved food-grade lubricant is applied at the factory following assembly to ensure uniform coverage and protection of each chain component.

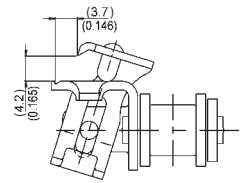
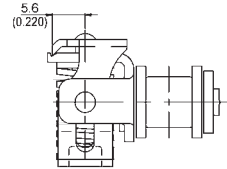
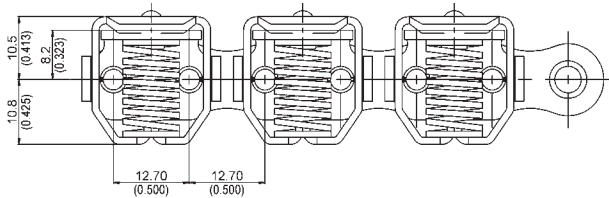
All-Inclusive Package from Tsubaki



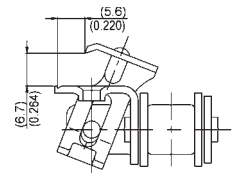
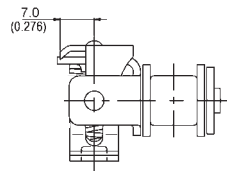
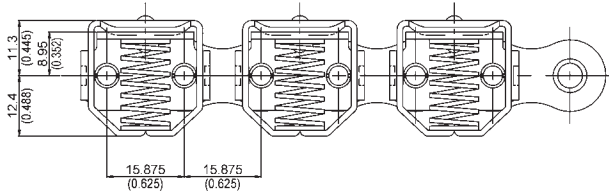
Precision machined sprockets with cam (assembled for both Type M and Standard Gripper Chain applications) are available as design stock.



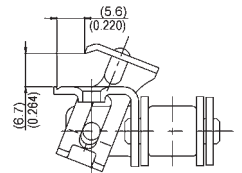
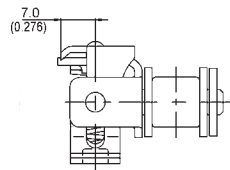
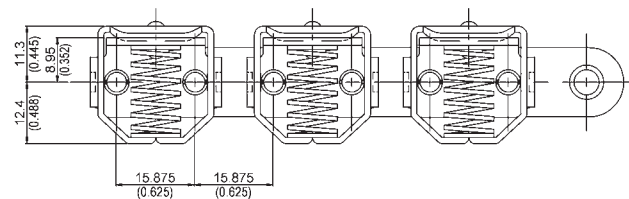
RS08B-NP-KUM and RS08B-LM-NP-KUM



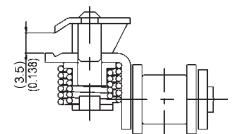
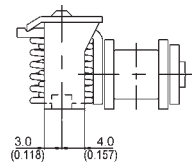
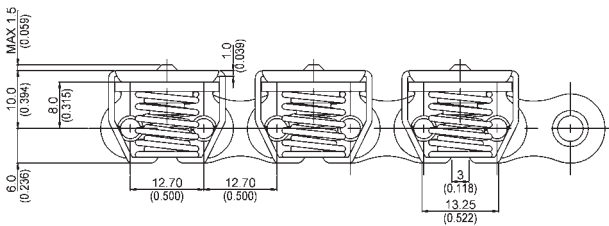
RS10B-NP-KUM and RS10B-LM-NP-KUM



RS10B-SS-KUM



RS08B-NP-KUS and RS08B-LM-NP-KUS



ISO Ref.	Tsubaki Chain No.	Connecting Link No.	Pitch		Roller Dia.		Inside Width		Clamp Type	Clamping Force	Materials		
			mm	in.	mm	in.	mm	in.			N	Base Chain	Clamp
08B-1	RS08B-NP-KUM	RS08B-NP-KUM-CL	12.70	.500	8.51	.335	7.75	.305	Type M	50	NP	304SS	SA
08B-1	RS08B-LM-NP-KUM	RS08B-LM-NP-KUM-CL	12.70	.500	8.51	.335	7.75	.305	Type M	50	NP Lambda	304SS	SA
10B-1	RS10B-NP-KUM	RS10B-NP-KUM-CL	15.875	.625	10.16	.400	9.65	.380	Type M	70	NP	304SS	SA
10B-1	RS10B-LM-NP-KUM	RS10B-LM-NP-KUM-CL	15.875	.625	10.16	.400	9.65	.380	Type M	70	NP Lambda	304SS	SA
10B-1	RS10B-SS-KUM	RS10B-SS-KUM-CL	15.875	.625	10.16	.400	9.65	.380	Type M	70	SS	304SS	SS
08B-1	RS08B-NP-KUS	RS08B-NP-KUS-CL	12.70	.500	8.51	.335	7.75	.305	Standard	55	NP	304SS	SA
08B-1	RS08B-LM-NP-KUS	RS08B-LM-NP-KUS-CL	12.70	.500	8.51	.335	7.75	.305	Standard	55	NP Lambda	304SS	SA

NP = Nickel-Plated Steel SS = Stainless Steel SA = Special Alloy
 Note: Do not twist chain. Use care not to damage attachment when unwinding chain from reel.



TSUBAKIMOTO CHAIN CO.

TSUBAKIMOTO CHAIN CO.

Headquarters

Nakanoshima Mitsui Building
3-3-3 Nakanoshima, Kita-ku
Osaka 530-0005, Japan
Phone : 81-6-6441-0011
Facsimile : 81-6-6441-0489
Internet:
<http://tsubakimoto.com/>

Chain Division

Chain Sales Department

1-3 Kannabidai 1-chome
Kyotanabe, Kyoto 610-0380, Japan
Phone : 81-774-64-5023/4
Facsimile : 81-774-64-5212

For further information please
contact the Chain Division.



Kyotanabe Plant

Global Associated Partners:

U.S. TSUBAKI, INC.

301 E. Marquardt Drive
Wheeling, IL 60090-6497
U.S.A.
Phone : 1-847-459-9500
Facsimile : 1-847-459-9515

TSUBAKIMOTO EUROPE B.V.

Aventurijn 1200, 3316 LB Dordrecht
The Netherlands
Phone : 31-78-6204000
Facsimile : 31-78-6204001

TSUBAKI of CANADA LIMITED

1630 Drew Road
Mississauga, Ontario, L5S 1J6
Canada
Phone : 1-905-676-0400
Facsimile : 1-905-676-0904

TSUBAKIMOTO SINGAPORE PTE. LTD.

25 Gul Lane
Jurong
Singapore 629419
Phone : 65-6861-0422/3/4
Facsimile : 65-6861-7035

TSUBAKI AUSTRALIA PTY. LTD.

Unit E, 95-101 Silverwater Road
Silverwater, N.S.W. 2128
Australia
Phone : 61-2-9648-5269
Facsimile : 61-2-9648-3115

TAIWAN TSUBAKIMOTO CO.

No. 33, Lane 17, Zihciang North Road
Gueishan Township, Taoyuan County
Taiwan
Phone : 886-33-293827/8/9
Facsimile : 886-33-293065

TSUBAKIMOTO U.K. LTD.

Osier Drive, Sherwood Park
Annesley, Nottingham
NG15 0DX U.K.
Phone : 44-1623-688-700
Facsimile : 44-1623-688-789

TSUBAKIMOTO (THAILAND) CO., LTD.

999/9 The Offices at Centralworld
10th Floor, No. 1001, Rama 1 Road
Pathumwan, Bangkok 10330 Thailand
Phone : 66-2-264-5354/5/6
Facsimile : 66-2-251-3912

TSUBAKIMOTO CHAIN TRADING (SHANGHAI) CO., LTD.

Room 1712, Lippo Plaza
No. 222 Huai Hai Zhong Road
Shanghai 200021, China
Phone : 86-21-5396-6651/2
Facsimile : 86-21-5396-6628

KOREA CONVEYOR IND. CO., LTD.

72-1 Onsoo-Dong
Kuro-Ku, Seoul
Korea
Phone : 82-2-2619-4711
Facsimile : 82-2-2619-0819

Distributed by: