



Neptune® Chain

Your Best Defense
Against Corrosion



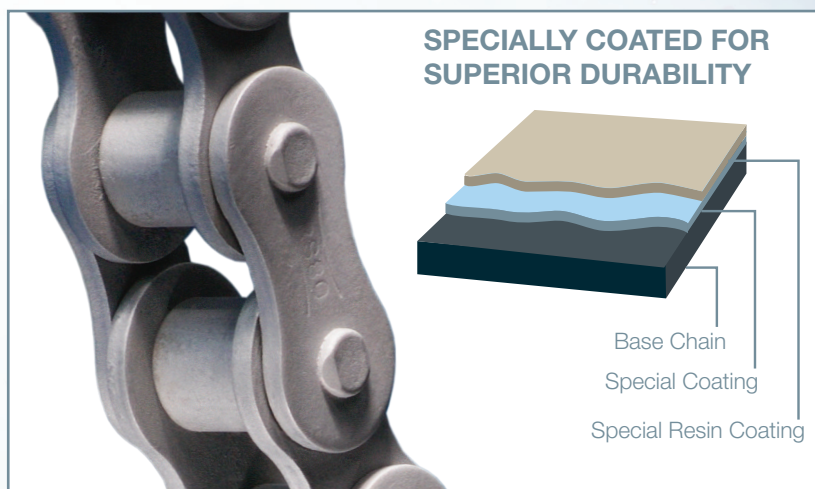
CORROSION RESISTANCE THAT W

New Improved Neptune® Chain

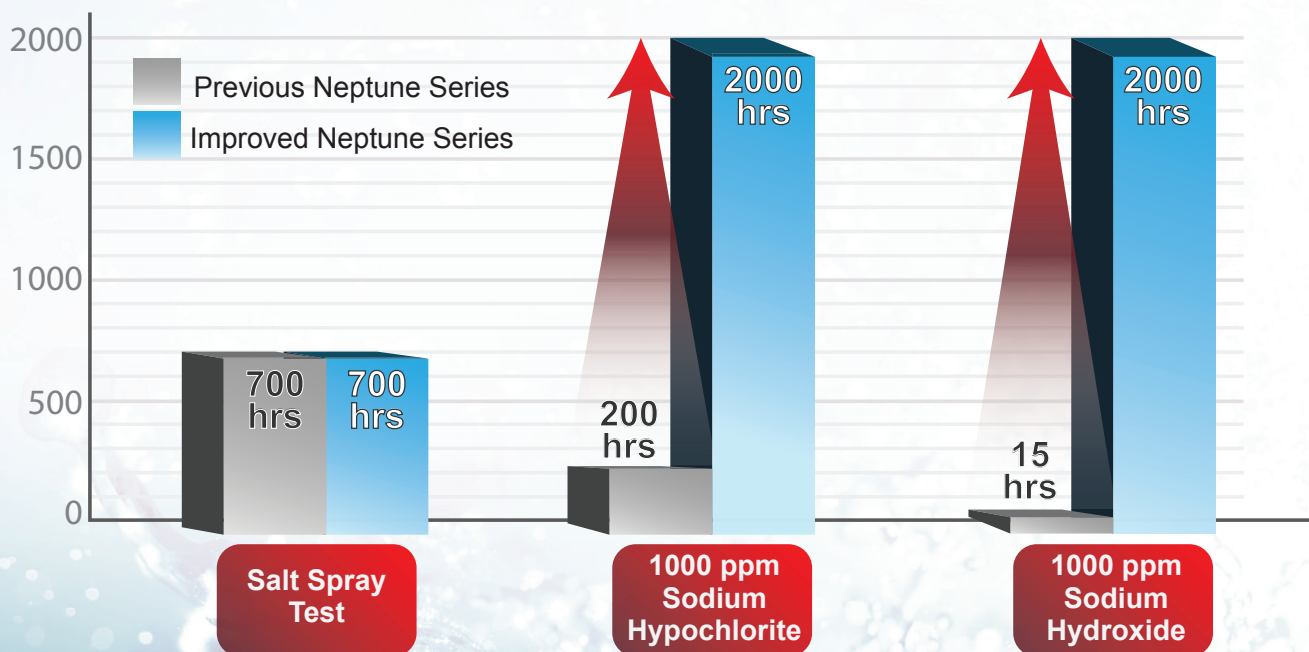
The newest generation of Tsubaki's Neptune chain delivers exceptional corrosion resistance in applications exposed to water, saltwater, chemicals and high-humidity conditions.

Harsh conditions can take a serious toll on other chains, but Neptune chain is designed to provide maximum reliability in wet environments, even underwater. Strengthened by hardened carbon steel and a unique multilayer surface treatment, the ANSI series chain resists corrosive conditions longer than ever before.

Unlike the competition who applies coatings after chain assembly, Neptune coatings are applied to the entire surface of each component before chain assembly to ensure complete, uniform coverage of every part. Low-temperature application and curing preserve component hardness and strength, providing the same high tensile strength and maximum allowable load as Tsubaki's ANSI standard chain.



Made to Withstand More



WASHES AWAY THE COMPETITION

The Neptune Difference

- Tsubaki's newly developed surface treatment process provides superb corrosion and chemical resistance.
- This new coating provides up to three times longer chain life than traditional zinc coatings.
- Neptune chain is environmentally friendly and compliant with RoHS requirements, and is not manufactured with hazardous elements such as hexavalent chromium, lead, cadmium, mercury or arsenic.
- A special treatment process is used to apply the coatings, ensuring that the strength of the chain is not compromised in the process. Neptune chains have the same tensile strength and allowable load as our standard carbon steel roller chains.

Conditions for Neptune Chain

- Outdoor applications where chain is exposed to the elements, such as mud, dirt and weather
- Applications that require washdown
- Applications where cleaning detergents are used, including alkaline chemicals
- Applications exposed to water spray and mild chemicals

Typical Applications

- Food Processing*
- Food Packaging
- Fruit and Vegetable Handling
- Canning / Bottling
- Port / Shipyard
- Meat Processing*
- Bakeries*
- Agriculture

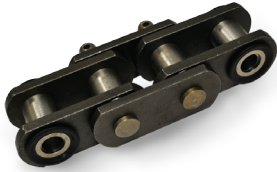
*Not direct food contact



Neptune series chains are available in a variety of options for your applications, including:

- Single and Multi-strand
- Single and Double-Pitch
- Attachment
- British Standard
- Made-to-Order
- Sizes 35-240; C2040-C2160H

More innovative solutions from Tsubaki



**SEALED JOINT
CHAIN OPTIONS**



**BACKSTOPS &
OVERRUNNING
CLUTCHES**



**STEEL CABLE
CARRIERS**



**CONTINUOUS-
FLEX CABLES**



**SMART TOOTH®
SPROCKETS**



**TITAN™ SERIES
CHAINS**



EXCELLENCE THROUGH INNOVATION SINCE 1917

For over 100 years, Tsubaki has developed and manufactured the highest-quality products for power transmission and motion control. With a vast network of global production facilities, R&D resources and sales offices, Tsubaki remains committed to providing innovative solutions to customers' problems for the next 100 years.

ustsubaki.com



Corporate Headquarters
U.S. Tsubaki Power Transmission, LLC
301 E. Marquardt Drive
Wheeling, IL 60090
Tel: 800.323.7790



Roller Chain Division
821 Main St.
Holyoke, MA 01040
Tel: 800.323.7790



**Conveyor & Construction
Chain Division**
1010 Edgewater Drive
Sandusky, OH 44870
Tel: 800.537.6140



Sprocket Manufacturing
1630 Drew Road
Mississauga, ON L5S 1J6
Tel: 800.323.7790



**Cable & Hose
Carrier Division**
7100 W. Marcia Road
Milwaukee, WI 53223
Tel: 800.443.4216

Note: In accordance with the policy of U.S. Tsubaki Power Transmission, LLC to consistently improve its products, the specifications in this brochure are subject to change without notice. The logos, brand names or product names in this brochure are trademarks or registered trademarks of Tsubakimoto Chain Co. and its subsidiaries in Japan, the U.S. and other countries.