



Tsubaki SMART TOOTH®



TSUBAKI SMART TOOTH®

WHEN FAILURE IS NOT AN OPTION

Tsubaki SMART TOOTH® offers users the ability to identify and schedule drive system maintenance before critical component failure occurs. Strategic placement of our patented Wear Indicator pins on one or more sprocket teeth provides visual indication that a sprocket is still within the allowable wear tolerance, or that it needs to be replaced. When factoring in the cost of critical drive system components, implementation of Tsubaki Wear Indicator technology makes sense for applications that are driven by capital equipment, or where non-scheduled downtime is simply not acceptable.

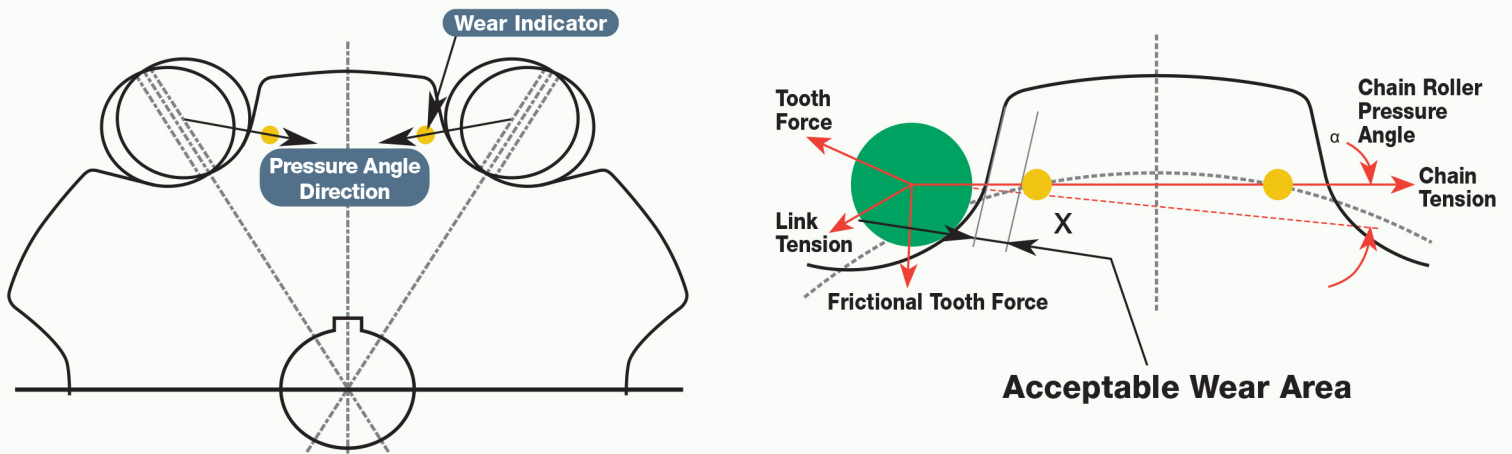


Figure 1 – Theory of Operation

Figure 1 displays how Wear Indicator pins are strategically placed on the thrust faces of the sprocket tooth, where the resultant pressure angle of the chain roller would create wear.

Figure 2 – Comparison – New (1) vs. Worn Sprocket (2)

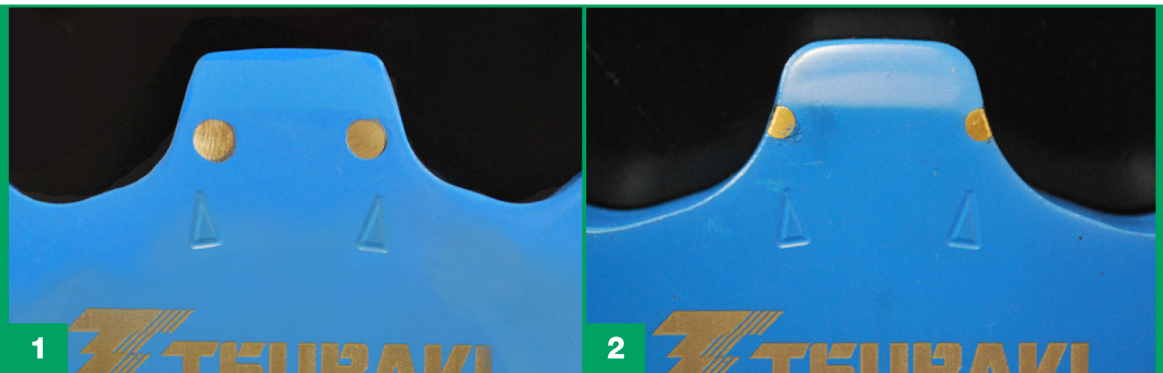


Figure 2 provides a comparison and example of a sprocket that was removed from service due to chain failure. Notice the difference in chain engagement between the new and worn sprocket.



Availability

- ANSI 80 through 240 pitch sprockets
- Engineering Class sprockets
- Carbon steel and stainless steel sprockets
- Hardened and non-hardened teeth
- Type A (no hub extension)
Type B (one-sided hub extension)
Type C (two-sided hub extension)
- Taper-Lock®, Split-Taper and QD® style sprockets

Note: For sprockets that fall outside of these parameters, please contact U.S. Tsubaki directly.

Over time in service, the sprocket tooth profile area is reduced due to induced load created by the chain roller. The reduction in sprocket tooth profile area creates accelerated wear on the drive chain roller, causing poor fit, alignment, and chain wrap as it relates to the tooth profile. Ultimately, chain wear accelerates at an exponential rate, resulting in loss of tension, jumped chain, drive slipping, and catastrophic failure.

Tsubaki Smart Tooth is your solution!

Value

- Extended chain life through predictable maintenance
- Eliminates the guesswork associated with worn sprockets
- Reduces overall cost of equipment ownership
- Provides warning of catastrophic drive failure
- Provides the opportunity to schedule maintenance based on sprocket wear rate

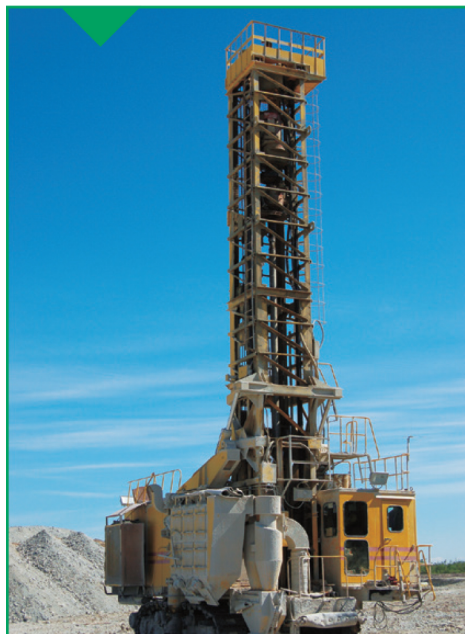


Patented Smart Tooth sprockets come in a special coating so you know Tsubaki is working hard for you. Just look for the **BLUE!**

Ideal Industries and Applications

Mining:

- Rotary Breakers
- Feeder Breakers
- Reclaimers
- Drill Rigs
- Shuttle Car



Cement:

- Bucket Elevators
- Conveyor Systems
- Rotary Drive Systems
- Reclaimer Systems



Oil and Gas Exploration:

- Coiled Tube Injector
- Draw Works

Other Applications

- Pin Ovens
- Amusement Parks
- Foundries
- Asphalt Plants (Looper Systems)
- Sugar (Cane Conveyors & Sugar Crushers)

TAPER-LOCK® is a registered trademark of Rockwell Automation
QD® is a registered trademark of, and is used under license agreement from Emerson Electric Co



Corporate Headquarters
U.S. Tsubaki Power Transmission, LLC
301 E. Marquardt Drive
Wheeling, IL 60090
Tel: (800) 323-7790
www.ustsubaki.com



Roller Chain Division
821 Main Street
Holyoke, MA 01040
Tel: (800) 323-7790



Conveyor and Construction
Chain Division
1010 Edgewater Drive
Sandusky, OH 44870
Tel: (800) 537-6140



Sprocket Manufacturing
Mississauga, Ontario
Tel: (800) 323-7790



KabelSchlepp Division
7100 W. Marcia Rd
Milwaukee, WI 53223
Tel: (800) 443-4216