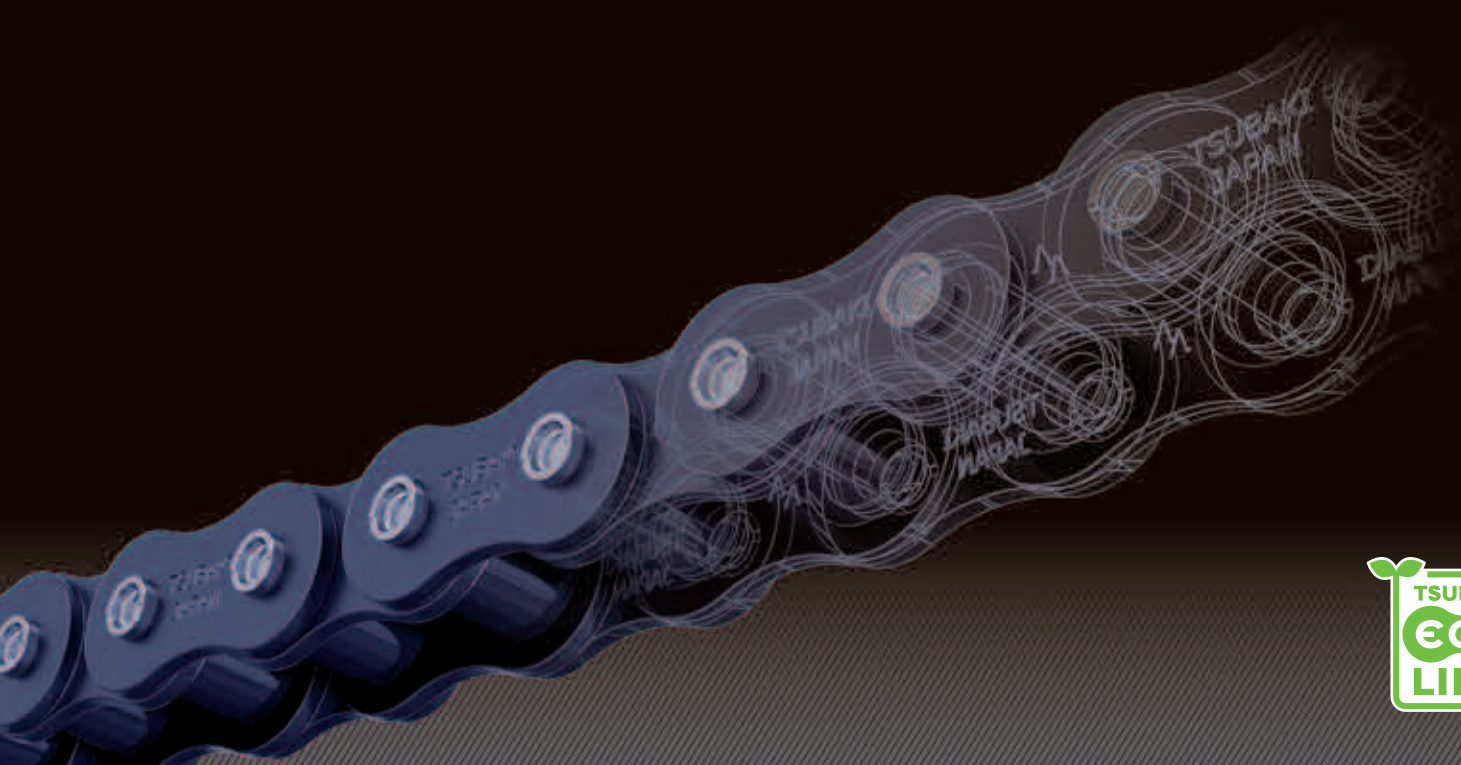


# Lambda RS Roller Chain BS/DIN series

The world's most advanced lube free chain



**LAMBDA**  
ADVANCED LUBE FREE CHAIN



## **Made in Japan**

Located in Kansai Science City, the Kyotanabe Plant embodies our wide spectrum of cutting-edge technological solutions. Our aim is to develop this environmentally friendly facility into the world's number one chain plant. Furthermore, Kyotanabe's Technical Center plays a vital role within the Tsubaki Group through its R&D activities and distribution of knowledge.

The Kyotanabe Plant is an excellent example of a facility built on the foundation of Tsubaki's technical expertise.

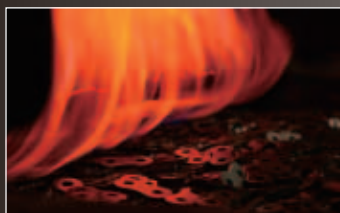
### Consideration for the Global Environment

The Tsubaki Group is working to conserve the environment and reduce the environmental impact of its operations by improving the efficiency of its manufacturing activities.

In addition, the Tsubaki Group is advancing the development of environmentally friendly products. These eco-products help customers reduce energy consumption and improve the economic aspects of their operations.



The Tsubaki Eco Link logo is used only on products that satisfy the standards for environmental friendliness set by the Tsubaki Group.



## **New Generation Tsubaki Lube Free RS Roller Chain – Lambda**

Since 1917 Tsubakimoto Chain Co. has consistently provided the highest quality industrial chain. Being the global leader in innovation, Tsubaki became the world's first manufacturer to introduce lube free chain under the brand name Lambda in 1988.

Lambda Chain is ideal for environments where chain lubrication is difficult, impossible or undesirable. Typical applications can be found in industries where clean environments are required (e.g. food, packaging) and in environments where abrasive contamination is prominent (e.g. wood processing, paper industry).

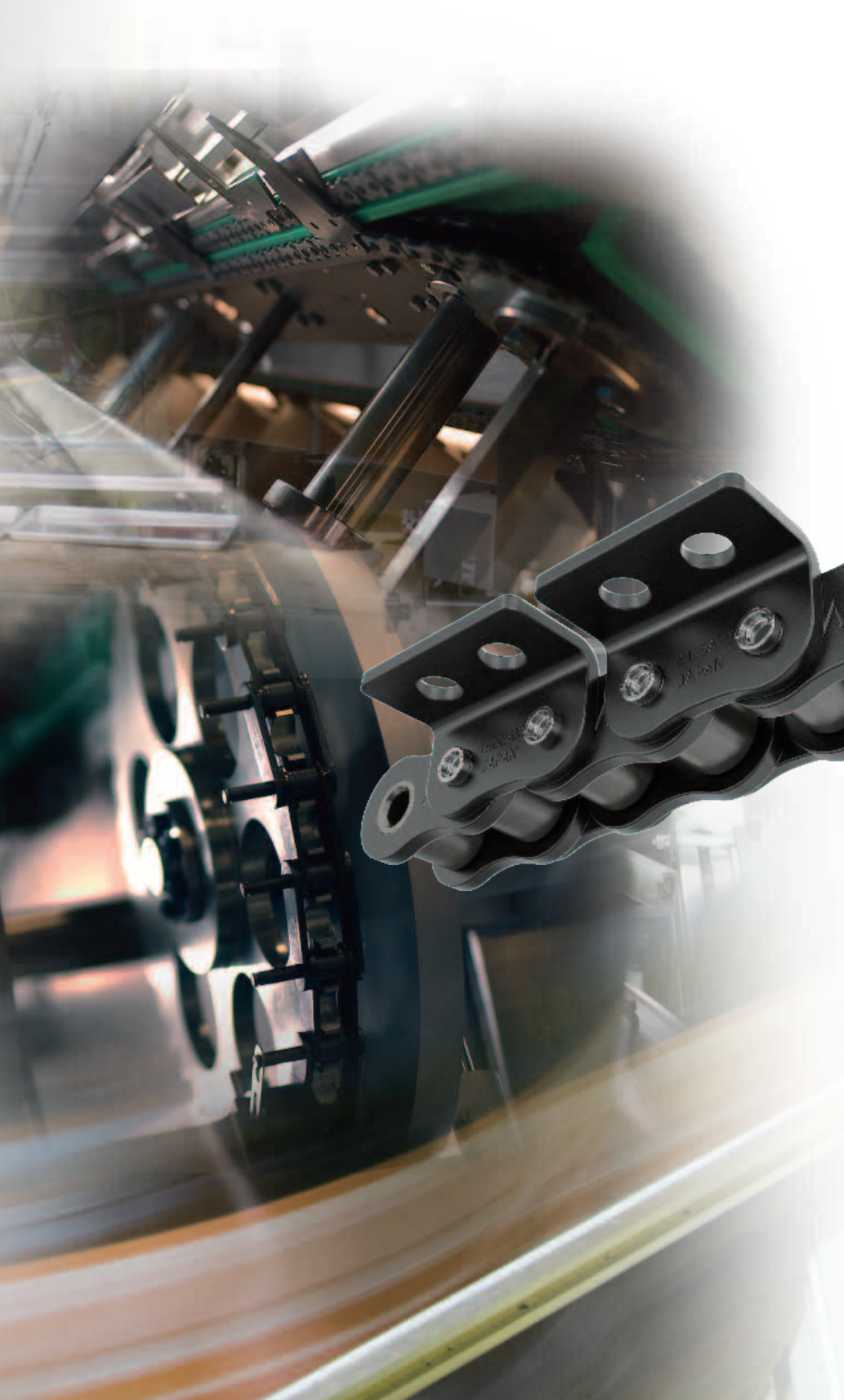
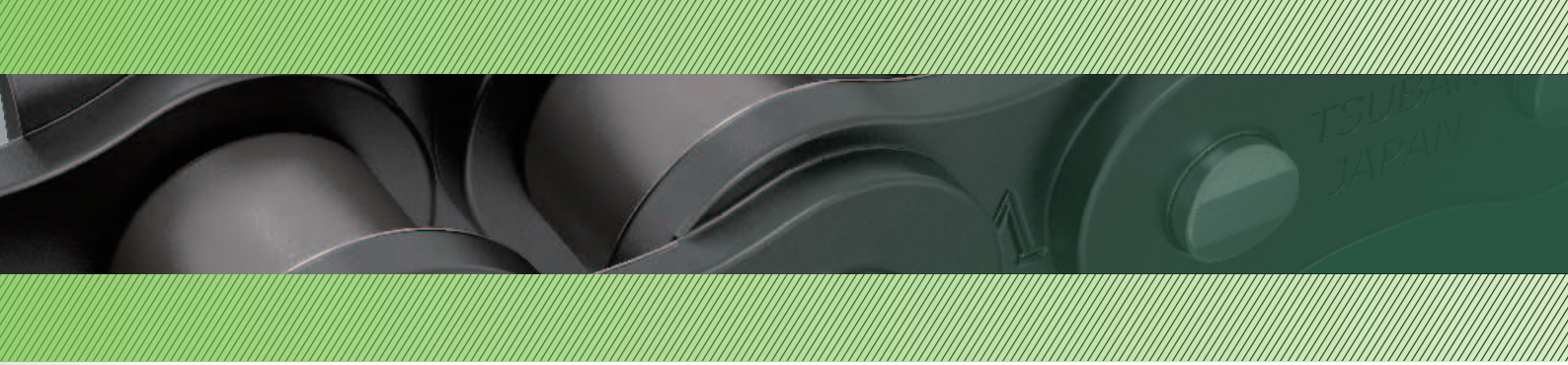
Tsubaki is now proud to introduce the 5th generation premium BS/DIN Lube Free Lambda Chain.

### **Chain Features:**

- 1 Oil Impregnated Sintered Bush**  
The microscopic pores in the seamless sintered bush are vacuum filled with high performance lubricant. The upgraded bush design provides a 50% increase in wear-life performance.
- 2 Special Coated Pin**  
The special coating on the pin surface enhances the long term internal lubrication.
- 3 Center Sink Rivet**  
The unique center sink pin design offers easy chain disassembly, and the markings on the rivet head will identify pin rotation.
- 4 Ring Coining**  
The patented Ring Coin connecting link ensures that the chain can be specified up to its full chain capacity.



- This is applicable for attachment chains to RS16B-1.
- Average increase compared to the previous generation of Lambda Chain. The results are not yet confirmed for N.E.P and KF series Heat resistant Lambda Chain.
- The improved bush design is applicable on RF06B to RS16B.
- KFseries Lambda up to 230°C is available upon request.



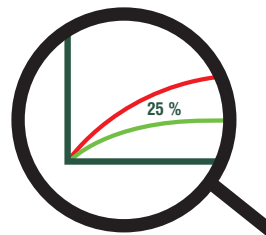
## **Tsubaki's Commitme**

### **Lambda Sintered Bush**



Tsubaki Lambda bushes have been upgraded to the optimum composition of sintered metals. The lubricant specifications and oil impregnation methods have been reviewed and further improved.

In addition, heat treatment and the geometry of the bush were improved to guarantee optimal performance.



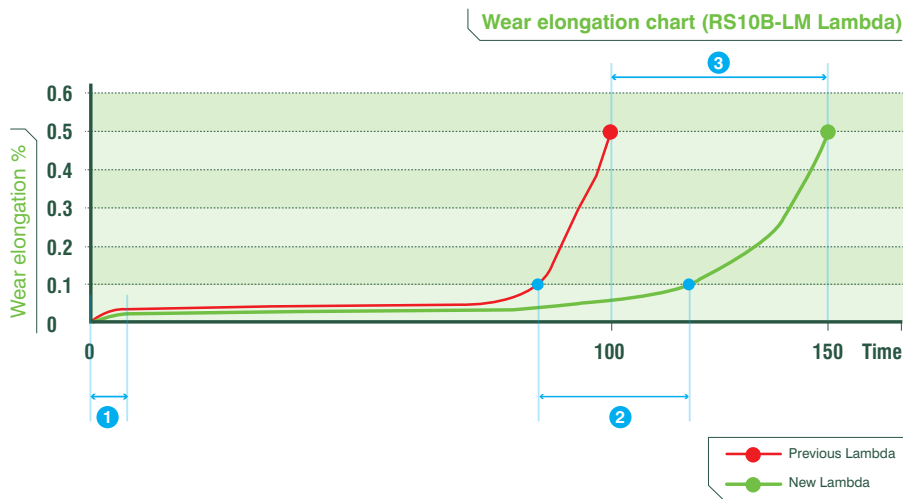
## **Product range**



# THE WORLD'S MOST ADVANCED LUBE FREE CHAIN



## nt to Unparalleled Quality



### 1 Initial Elongation

For conveyor applications, a 25% reduction in initial elongation now comes as standard. This results in a reduced need for post installation maintenance (less chain / sprocket adjustment) and contributes to an overall increase in wear life <sup>[a]</sup>.

### 2 Elongation Stability

The elongation pattern of the new Tsubaki Lambda Chain is now extremely stable. This minimizes the need for intermediate chain and sprocket adjustment.

### 3 Wear life

As a result of the achieved improvements, the wear life of the new Lambda Chain increased by 50% <sup>[b]</sup> while maintaining the same chain strength.

## Environment

Lambda chain is a lube free chain with lubricant impregnated in the bushes. Therefore there is no need for lubricating the chain during operations. The zero usage of additional lubricant during machine operations helps reducing chemical waste and greatly limits the risk of product contamination. Tsubaki Lambda chain contributes to a clean work environment.

Manufacturing chain with a substantially longer wear-life serves the environment: less frequent chain replacement results in reduced consumption of raw materials and energy and reduces the CO<sub>2</sub> emission. Lambda chain is a true eco-friendly product.

## Standard chain

Lambda drive and attachment chains in standard sizes are available from stock. The product is available in chain sizes from RF06B up to RS24B in simplex and duplex configurations and in N.E.P surface coated type <sup>[c]</sup>. Lambda chain can be used in temperatures up to 150°C <sup>[d]</sup>.

## Special chain

Tsubaki offers special chain to customer's specifications from either its fully equipped workshop in The Netherlands and the United Kingdom or from its manufacturing facilities in Japan. Heat resistant, food-grade and anti-corrosion series are also available upon request.

## Matching & tagging

Deviations in chain length exist due to the manufacturing tolerances of the parts. When chains are to be used in parallel and minimizing the relative difference in the lengths is necessary, request a "matched and tagged" chain.

Note: A separate charge is required for a length matching.

## TSUBAKIMOTO CHAIN CO.

### Headquarters

Nakanoshima Mitsui Building  
3-3-3 Nakanoshima, Kita-ku  
Osaka 530-0005, Japan  
Phone : +81-6-6441-0011  
Facsimile : +81-6-6441-0489  
Internet:  
<http://tsubakimoto.com/>

### Chain & Power Transmission Operations

**Chain Products Department**  
1-3 Kannabidai 1-chome  
Kyotanabe, Kyoto 610-0380, Japan  
Phone : +81-774-64-5100  
Facsimile : +81-774-64-5212

### Global Associated Partners:

#### NORTH and SOUTH AMERICA

**U.S. TSUBAKI  
POWER TRANSMISSION, LLC**  
301 E. Marquardt Drive  
Wheeling, IL 60090-6497  
U.S.A.  
Phone : +1-847-459-9500  
Facsimile : +1-847-459-9515

**TSUBAKI of CANADA LIMITED**  
1630 Drew Road  
Mississauga, Ontario, L5S 1J6  
Canada  
Phone : +1-905-676-0400  
Facsimile : +1-905-676-0904

**TSUBAKI BRASIL  
EQUIPAMENTOS INDUSTRIAIS LTDA.**  
Rua Pamplona, 1018 - C.J. 73/74  
Jardim Paulista, CEP 01405-001  
São Paulo - S.P. Brazil  
Phone : +55-11-3253-5656  
Facsimile : +55-11-3253-3384

#### EUROPE

**TSUBAKIMOTO EUROPE B.V.**  
Aventurijn 1200, 3316 LB Dordrecht  
The Netherlands  
Phone : +31-78-6204000  
Facsimile : +31-78-6204001

**TSUBAKIMOTO U.K. LTD.**  
Osier Drive, Sherwood Park  
Annesley, Nottingham  
NG15 0DX U.K.  
Phone : +44-1623-688-700  
Facsimile : +44-1623-688-789

**TSUBAKI DEUTSCHLAND GmbH**  
ASTO Park Oberpfaffenhofen  
Friedrichshafener Straße 1  
D-82205 Gilching, Germany  
Phone : +49-8105-7307100  
Facsimile : +49-8105-7307101

#### ASIA and OCEANIA

**TSUBAKIMOTO SINGAPORE PTE. LTD.**  
25 Gul Lane  
Jurong  
Singapore 629419  
Phone : +65-6861-0422/3/4  
Facsimile : +65-6861-7035

**TSUBAKIMOTO (THAILAND) CO., LTD.**  
388 Exchange Tower, 19th Floor Unit  
1902, Sukhumvit Road, Klongtoey  
Bangkok 10110 Thailand  
Phone : +66-2-262-0667/8/9 (3 lines)  
Facsimile : +66-2-262-0670

**TSUBAKI INDIA  
POWER TRANSMISSION PTE. LTD.**  
Chandrika Chambers No.4, 3rd Floor  
Anthony Street, Royapettah  
Chennai-600014, Tamil Nadu, India  
Phone : +91-44-4231-5251  
Facsimile : +91-44-4231-5253

**TSUBAKIMOTO SINGAPORE PTE. LTD.  
VIETNAM REPRESENTATIVE OFFICE**  
8F H&H Building, 209 Hoang Van Thu  
Phu Nhuan District, Ho Chi Minh City  
Vietnam  
Phone : +84-8-3999-0131 or 0132  
Facsimile : +84-8-3999-0130

**TSUBAKIMOTO SINGAPORE PTE. LTD.  
INDONESIA REPRESENTATIVE OFFICE**  
Wisma Kyoei Prince, 11th Floor, Suite 1106  
Jl. Jend. Sudirman, Kav. 3, Jakarta 10220  
Indonesia  
Phone : +62-21-5724-275  
Facsimile : +62-21-5724-275

**TSUBAKI AUSTRALIA PTY. LTD.**  
Unit E, 95-101 Silverwater Road  
Silverwater, N.S.W. 2128  
Australia  
Phone : +61-2-9704-2500  
Facsimile : +61-2-9704-2550

**TAIWAN TSUBAKIMOTO CO.**  
No. 33, Lane 17, Zihciang North Road  
Gueishan Township, Taoyuan County  
Taiwan  
Phone : +886-33-293827/8/9  
Facsimile : +886-33-293065

**TSUBAKIMOTO CHAIN TRADING  
(SHANGHAI) CO., LTD.**  
Room 1703, Aetna Tower, 107  
Zunyi Rd., Changning District  
Shanghai 200051, China  
Phone : +86-21-5396-6651/2  
Facsimile : +86-21-5396-6628