

# TSUBAKI LARGE BORE POWER-LOCK®



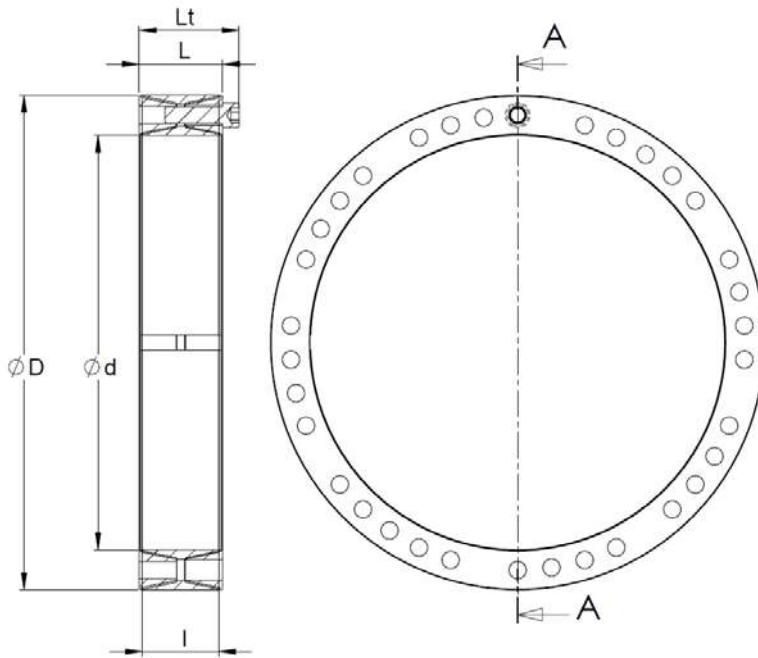
- ◆ Keyless Locking Device
- ◆ Space Saving
- ◆ High Transmissible Torque

PL-500mm

PL-50mm

How do you mount your  
large ideas?

# LARGE BORE POWER-LOCK®



T1 = Shaft Tolerance  
T2 = Bore Tolerance

The best design is the simplest design.

- Locking assembly that eliminates the problems associated with key systems
- High durability against reversing and impacting loads
- Thrust load capability
- Easy assembly and disassembly

The ability to transmit torque from shaft to rotating device relies on a clamping unit's ability to grasp both the shaft and bore securely. [Tsubaki's Power-Lock®](#) keyless locking device provides guaranteed\* transmissible torque ratings and clamping strength. Torque ratings can be misleading as companies tend to publish average torque ratings. By definition this means that half the samples tested were below this rating and half were above. At [Tsubaki](#), we publish the Minimum Torque rating minus a conservative safety factor.

\*Certain conditions apply

## Dimensions and Ratings

Part No.	Power Lock Dimensions							Rated Torque		Axial Force		Pressures				Bolt Information			
	d	T <sub>1</sub>	D	T <sub>2</sub>	L	I	Lt	Mt		Pax		Contact pressure on shaft, P		Contact pressure on hub bore, P'		No. Bolts Z	Bolt Type S	Max Bolt Torque, Ma	
								kNm	kgfm	kN	kgf	MPa	kgf/mm <sup>2</sup>	MPa	kgf/mm <sup>2</sup>			Nm	kgfm
PL320X405AS	320	+0.000 -0.089	405	+0.089 -0.000	78	72	98	210	21,400	1,310	134,000	152	15.5	120.54	12.3	29	M20X70	568.4	58
PL340X425AS	340		425		78	72	98	223	22,800	1,310	134,000	143	14.6	114.66	11.7	29	M20x70	568.4	58
PL360X455AS	360		455		90	84	112	294	30,000	1,640	167,000	144	14.7	113.68	11.6	29	M22x80	764.4	78
PL380X475AS	380		475		90	84	112	311	31,700	1,640	167,000	136	13.9	109.76	11.2	29	M22x80	764.4	78
PL400X495AS	400		495		90	84	112	327	33,400	1,640	167,000	129	13.2	104.86	10.7	29	M22x80	764.4	78
PL420X515AS	420	+0.000 -0.097	515	+0.097 -0.000	90	84	112	379	38,700	1,800	184,000	136	13.9	111.72	11.4	32	M22x80	764.4	78
PL440X545AS	440		545		102	96	126	459	46,800	2,090	213,000	131	13.4	106.82	10.9	32	M24x90	980	100
PL460X565AS	460		565		102	96	126	480	49,000	2,090	213,000	126	12.9	102.9	10.5	32	M24x90	980	100
PL480X585AS	480		585		102	96	126	532	54,300	2,210	226,000	128	13.1	104.86	10.7	34	M24x90	980	100
PL500X605AS	500		605		102	96	126	555	56,600	2,210	226,000	123	12.6	101.92	10.4	34	M24x90	980	100

All Dimensions are in millimeters unless otherwise indicated  
Dimension and Performance Data are subject to change without notice



**Tsubaki of Canada Limited**  
1630 Drew Road  
Mississauga ON L5S 1J6  
Toll Free 1-800-263-7088  
Fax 905-676-0904

**U.S. Tsubaki, Inc.**  
301 E. Marquardt Dr.  
Wheeling, IL 60090 USA  
Toll Free 1-800-323-7790  
Fax 847-459-9515