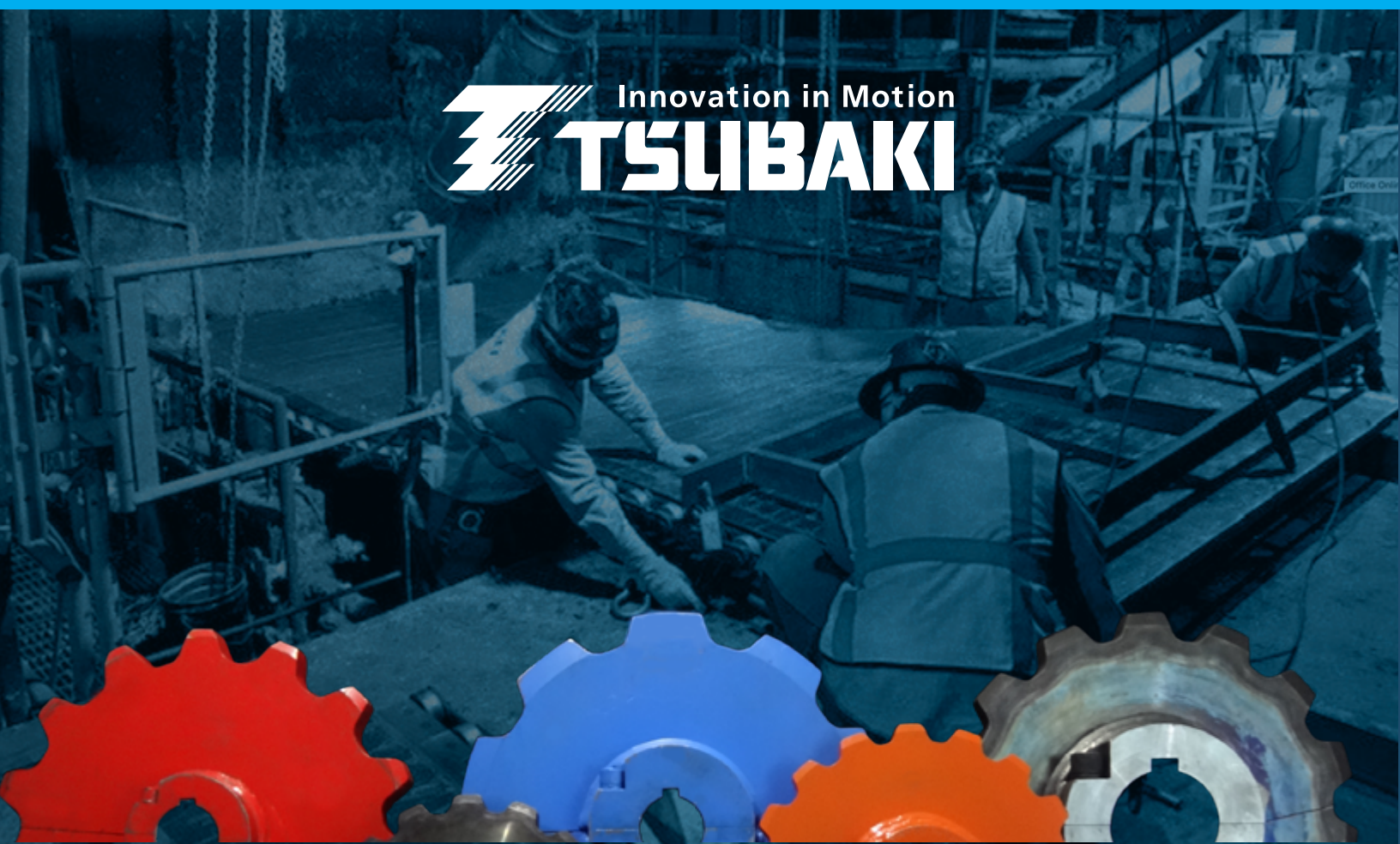


# *Mill Chain & Drum Sprockets*



*OPTIMIZE YOUR OPERATIONS  
WITH **TSUBAKI***





*The largest sprocket manufacturer in Canada is now offering an extended line up of mill chain sprockets to efficiently serve the Canadian market*

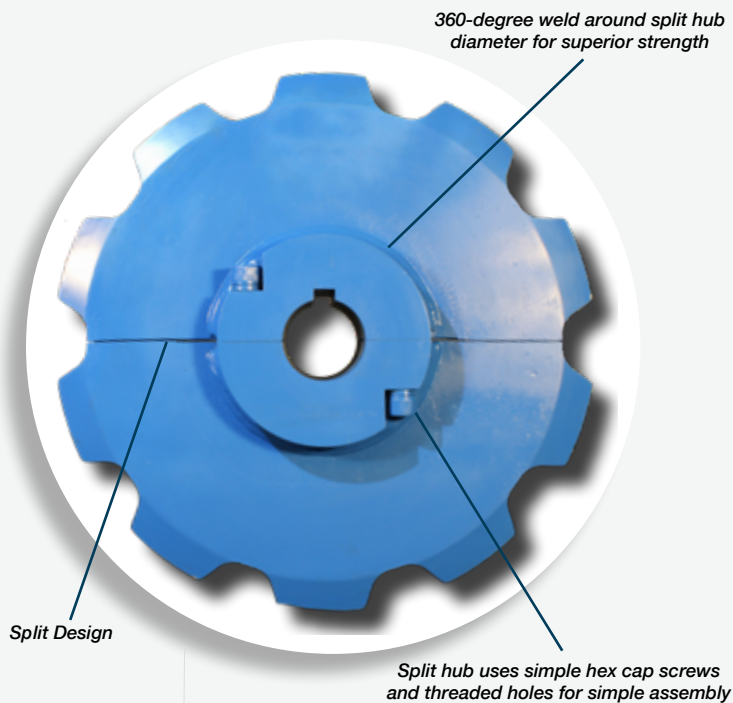
## ***The Tsubaki Standard***

- Size range: 78, 81X, 82, 124, 132, and 157 (Idlers included)
- Standard price list eliminates the need for any pricing request process
- Wide range of plates, hubs, and bushings stocked on-site allows for fast order turnaround and quick lead time
- Ease of installation with Tsubaki's split hub design that comes as standard
- 360-degree weld around split hub diameter for superior strength
- Low tooth profile as standard reduces the risk of interference with top mounted attachments
- Hardened teeth to reduce the rate of wear during chain engagement and optimize the life of the sprocket and chain
- Pitch diameter accuracy to the thousandth of an inch ensures proper chain-sprocket engagement

**\*For other options, see page 25**

# MILL CHAIN SPROCKETS

## Special Features



### Advantages of Split Design

- No requirement to remove shaft
- No disassembly or replacement of gear boxes, electric motors, bearings, couplings
- **80% reduction in labour & lost production time versus installing solid hub sprockets**



### Tsubaki's Sprocket

Tsubaki's standard SN hubs have a recessed Hex Socket Head Cap Screw that threads internally from one half of the hub to the other. This feature is our standard and allows for a full 360 degree weld to the plate providing greater strength.



### Competitor's Sprocket

Many split hub designs use a bolt and nut that extend past the circumference/ outside diameter of the hub, this prevents the manufacturer's ability to complete a 360 degree weld to the plate creating weak areas that can lead to failure.

To maximize chain life, Tsubaki recommends that new sprockets be installed when installing new chain. When sprockets are not changed together with the chain it can lead to as much as a **25% reduction in chain life** for each additional installation on the same sprocket.

## Sprocket Nomenclature

81XC19F-3G-SPLIT	
81X	Chain Type (Hardened)
C	Hub
19	Tooth Count
F	Finished Bore
3G	3-7/16" Bore
SPLIT	Split Type

## Alphanumeric Codes to Bore Sizes

Bore Code	Fraction
A	1/16"
B	1/8"
C	3/16"
D	1/4"
E	5/16"
F	3/8"
G	7/16"
H	1/2"

Bore Code	Fraction
I	9/16"
J	5/8"
K	11/16"
L	3/4"
M	13/16"
P	7/8"
R	15/16"

# MILL CHAIN SPROCKETS

## WH78 - B Style

2.609" Pitch / 0.840" Barrel Diameter / 1" Plate Thickness

All dimensions in inches unless otherwise stated.

Item No.	Min Bore	Max Bore	Outside Diameter	Pitch Diameter	Bottom Diameter	Hub Outside Diameter	LTB
78B8F-XX	1.000	2.813	7.299	6.818	5.918	4.500	2.125
78B9F-XX	1.250	3.438	8.168	7.628	6.728	5.250	2.375
78B10F-XX	1.250	3.438	9.030	8.443	7.543	5.250	2.375
78B11F-XX	1.250	3.438	9.885	9.261	8.361	5.250	2.375
78B12F-XX	1.250	3.438	10.737	10.080	9.180	5.250	2.375
78B13F-XX	1.250	3.438	11.585	10.902	10.002	5.250	2.375
78B14F-XX	1.250	3.438	12.431	11.725	10.825	5.250	2.375
	3.500	3.938	12.431	11.725	10.825	6.500	2.938
78B15F-XX	1.250	3.438	13.274	12.549	11.649	5.250	2.375
	3.500	3.938	13.274	12.549	11.649	6.500	2.938
78B16F-XX	1.250	3.438	14.116	13.373	12.473	5.250	2.375
	3.500	3.938	14.116	13.373	12.473	6.500	2.938
78B17F-XX	1.500	3.438	15.957	14.199	13.299	5.500	2.563
	3.500	3.938	15.957	14.199	13.299	6.500	2.938
78B18F-XX	1.500	3.438	15.796	15.025	14.125	5.500	2.563
	3.500	3.938	15.796	15.025	14.125	6.500	2.938
78B8F-XX-SPLIT	0.500	1.500	7.299	6.818	5.918	3.125	1.875
78B9F-XX-SPLIT	0.500	1.500	8.168	7.628	6.728	3.125	1.875
78B10F-XX-SPLIT	1.125	2.438	9.030	8.443	7.543	4.375	2.125
78B11F-XX-SPLIT	1.125	2.438	9.885	9.261	8.361	4.375	2.125
78B12F-XX-SPLIT	1.125	2.438	10.737	10.080	9.180	4.375	2.125
78B13F-XX-SPLIT	1.125	2.438	11.585	10.902	10.002	4.375	2.125
78B14F-XX-SPLIT	1.125	2.438	12.431	11.725	10.825	4.375	2.125
	2.500	3.438	12.431	11.725	10.825	6.000	2.250
78B15F-XX-SPLIT	1.125	2.438	13.274	12.549	11.649	4.375	2.125
	2.500	3.438	13.274	12.549	11.649	6.000	2.250
78B16F-XX-SPLIT	1.125	2.438	14.116	13.373	12.473	4.375	2.125
	2.500	3.438	14.116	13.373	12.473	6.000	2.250
78B17F-XX-SPLIT	1.750	3.438	15.957	14.199	13.299	6.000	2.250
	3.500	4.000	15.957	14.199	13.299	7.625	2.375
78B18F-XX-SPLIT	1.750	3.438	15.796	15.025	14.125	6.000	2.250
	3.500	4.000	15.796	15.025	14.125	7.625	2.375

\*XX = Tsubaki Bore Code.

See 'Common Bore Codes' table for reference.

\*\*For additional bore sizes, please contact Tsubaki.

### Common Bore Codes\*\*

1R	2G	2R	3G	3R
1.9375	2.4375	2.9375	3.4375	3.9375

## WH78 - C Style

2.609" Pitch / 0.840" Barrel Diameter / 1" Plate Thickness

Item No.*	Min Bore	Max Bore	Outside Diameter	Pitch Diameter	Bottom Diameter	Hub Outside Diameter	LTB
78C8F-XX	1.000	2.813	7.299	6.818	5.918	4.500	3.375
78C9F-XX	1.250	3.438	8.168	7.628	6.728	5.250	3.875
78C10F-XX	1.250	3.438	9.030	8.443	7.543	5.250	3.875
78C11F-XX	1.250	3.438	9.885	9.261	8.361	5.250	3.875
78C12F-XX	1.250	3.438	10.737	10.080	9.180	5.250	3.875
78C13F-XX	1.250	3.438	11.585	10.902	10.002	5.250	3.875
78C14F-XX	1.250	3.438	12.431	11.725	10.825	5.250	3.875
	3.500	3.938	12.431	11.725	10.825	6.500	5.000
78C15F-XX	1.250	3.438	13.274	12.549	11.649	5.250	3.875
	3.500	3.938	13.274	12.549	11.649	6.500	5.000
78C16F-XX	1.250	3.438	14.116	13.373	12.473	5.250	3.875
	3.500	3.938	14.116	13.373	12.473	6.500	5.000
78C17F-XX	1.500	3.438	15.957	14.199	13.299	5.500	4.250
	3.500	3.938	15.957	14.199	13.299	6.500	5.000
78C18F-XX	1.500	3.438	15.796	15.025	14.125	5.500	4.250
	3.500	3.938	15.796	15.025	14.125	6.500	5.000
78C8F-XX-SPLIT	0.500	1.500	7.299	6.818	5.918	3.125	3.000
78C9F-XX-SPLIT	0.500	1.500	8.168	7.628	6.728	3.125	3.000
78C10F-XX-SPLIT	1.125	2.438	9.030	8.443	7.543	4.375	3.500
78C11F-XX-SPLIT	1.125	2.438	9.885	9.261	8.361	4.375	3.500
78C12F-XX-SPLIT	1.125	2.438	10.737	10.080	9.180	4.375	3.500
78C13F-XX-SPLIT	1.125	2.438	11.585	10.902	10.002	4.375	3.500
78C14F-XX-SPLIT	1.125	2.438	12.431	11.725	10.825	4.375	3.500
	2.500	3.438	12.431	11.725	10.825	6.000	3.750
78C15F-XX-SPLIT	1.125	2.438	13.274	12.549	11.649	4.375	3.500
	2.500	3.438	13.274	12.549	11.649	6.000	3.750
78C16F-XX-SPLIT	1.125	2.438	14.116	13.373	12.473	4.375	3.500
	2.500	3.438	14.116	13.373	12.473	6.000	3.750
78C17F-XX-SPLIT	1.750	3.438	15.957	14.199	13.299	6.000	3.750
	3.500	4.000	15.957	14.199	13.299	7.625	4.000
78C18F-XX-SPLIT	1.750	3.438	15.796	15.025	14.125	6.000	3.750
	3.500	4.000	15.796	15.025	14.125	7.625	4.000

\*XX = Tsubaki Bore Code.

See 'Common Bore Codes' table for reference.

\*\*For additional bore sizes, please contact Tsubaki.

### Common Bore Codes\*\*

1R	2G	2R	3G	3R
1.9375	2.4375	2.9375	3.4375	3.9375

# MILL CHAIN SPROCKETS

## WH78 - Idler Split

2.609" Pitch / 0.840" Barrel Diameter / 1" Plate Thickness

All dimensions in inches unless otherwise stated.

Chain	Type	Teeth	Item No.	Bore	Outside Diameter	Pitch Diameter	Bottom Diameter	Hub Outside Diameter	LTB
78	C	8	78C8X1RURE-SPLIT	1.938	7.299	6.818	5.918	4.375	3.500
78	C	9	78C9X1RURE-SPLIT	1.938	8.168	7.628	6.728	4.375	3.500
			78C9X2GURE-SPLIT	2.438	8.168	7.628	6.728	6.000	3.750
78	C	10	78C10X1GURE-SPLIT	1.438	9.030	8.443	7.543	4.375	3.500
			78C10X1RURE-SPLIT	1.938	9.030	8.443	7.543	4.375	3.500
			78C10X2CURE-SPLIT	2.188	9.030	8.443	7.543	6.000	3.750
			78C10X2GURE-SPLIT	2.438	9.030	8.443	7.543	6.000	3.750
			78C10X2RURE-SPLIT	2.938	9.030	8.443	7.543	6.000	3.750
78	C	11	78C11X1GURE-SPLIT	1.438	9.885	9.261	8.361	4.375	3.500
			78C11X1RURE-SPLIT	1.938	9.885	9.261	8.361	4.375	3.500
			78C11X2CURE-SPLIT	2.188	9.885	9.261	8.361	6.000	3.750
			78C11X2GURE-SPLIT	2.438	9.885	9.261	8.361	6.000	3.750
			78C11X2RURE-SPLIT	2.938	9.885	9.261	8.361	6.000	3.750
78	C	12	78C12X1GURE-SPLIT	1.438	10.737	10.080	9.180	4.375	3.500
			78C12X1RURE-SPLIT	1.938	10.737	10.080	9.180	4.375	3.500
			78C12X2CURE-SPLIT	2.188	10.737	10.080	9.180	6.000	3.750
			78C12X2GURE-SPLIT	2.438	10.737	10.080	9.180	6.000	3.750
			78C12X2RURE-SPLIT	2.938	10.737	10.080	9.180	6.000	3.750
			78C12X3GURE-SPLIT	3.438	10.737	10.080	9.180	7.625	4.000
78	C	13	78C13X1GURE-SPLIT	1.438	11.585	10.902	10.002	4.375	3.500
			78C13X1RURE-SPLIT	1.938	11.585	10.902	10.002	4.375	3.500
			78C13X2CURE-SPLIT	2.188	11.585	10.902	10.002	6.000	3.750
			78C13X2GURE-SPLIT	2.438	11.585	10.902	10.002	6.000	3.750
			78C13X2RURE-SPLIT	2.938	11.585	10.902	10.002	6.000	3.750
			78C13X3GURE-SPLIT	3.438	11.585	10.902	10.002	7.625	4.000
78	C	14	78C14X1GURE-SPLIT	1.438	12.431	11.725	10.825	4.375	3.500
			78C14X1RURE-SPLIT	1.938	12.431	11.725	10.825	4.375	3.500
			78C14X2CURE-SPLIT	2.188	12.431	11.725	10.825	6.000	3.750
			78C14X2GURE-SPLIT	2.438	12.431	11.725	10.825	6.000	3.750
			78C14X2RURE-SPLIT	2.938	12.431	11.725	10.825	6.000	3.750
			78C14X3GURE-SPLIT	3.438	12.431	11.725	10.825	7.625	4.000
78	C	15	78C15X1GURE-SPLIT	1.438	13.274	12.549	11.649	4.375	3.500
			78C15X1RURE-SPLIT	1.938	13.274	12.549	11.649	4.375	3.500
			78C15X2CURE-SPLIT	2.188	13.274	12.549	11.649	6.000	3.750
			78C15X2GURE-SPLIT	2.438	13.274	12.549	11.649	6.000	3.750
			78C15X2RURE-SPLIT	2.938	13.274	12.549	11.649	6.000	3.750
			78C15X3GURE-SPLIT	3.438	13.274	12.549	11.649	7.625	4.000

## 81X - B Style

2.609" Pitch / 0.906" Barrel Diameter / 0.875" Plate Thickness

All dimensions in inches unless otherwise stated.

Item No.*	Min Bore	Max Bore	Outside Diameter	Pitch Diameter	Bottom Diameter	Hub Outside Diameter	LTB
81XB8F-XX	1.000	2.813	7.179	6.818	5.852	4.500	2.125
81XB9F-XX	1.250	3.438	8.048	7.628	6.662	5.250	2.375
81XB10F-XX	1.250	3.438	8.910	8.443	7.477	5.250	2.375
81XB11F-XX	1.250	3.438	9.765	9.261	8.295	5.250	2.375
81XB12F-XX	1.250	3.438	10.617	10.080	9.114	5.250	2.375
81XB13F-XX	1.250	3.438	11.465	10.902	9.936	5.250	2.375
81XB14F-XX	1.250	3.438	12.311	11.725	10.759	5.250	2.375
	3.500	3.938	12.311	11.725	10.759	6.500	2.938
81XB15F-XX	1.250	3.438	13.154	12.549	11.583	5.250	2.375
	3.500	3.938	13.154	12.549	11.583	6.500	2.938
81XB16F-XX	1.250	3.438	13.996	13.373	12.407	5.250	2.375
	3.500	3.938	13.996	13.373	12.407	6.500	2.938
81XB17F-XX	1.500	3.438	14.837	14.199	13.233	5.500	2.563
	3.500	3.938	14.837	14.199	13.233	6.500	2.938
81XB18F-XX	1.500	3.438	15.676	15.025	14.059	5.500	2.563
	3.500	3.938	15.676	15.025	14.059	6.500	2.938
81XB19F-XX	1.500	3.438	16.515	15.851	14.885	5.500	2.563
	3.500	3.938	16.515	15.851	14.885	6.500	2.938
81XB20F-XX	1.500	3.438	17.353	16.678	15.712	5.500	2.563
	3.500	3.938	17.353	16.678	15.712	6.500	2.938

\*XX = Tsubaki Bore Code.

See 'Common Bore Codes' table for reference.

\*\*For additional bore sizes, please contact Tsubaki.

Common Bore Codes**				
1R	2G	2R	3G	3R
1.9375	2.4375	2.9375	3.4375	3.9375

# MILL CHAIN SPROCKETS

## 81X - C Style

2.609" Pitch / 0.906" Barrel Diameter / 0.875" Plate Thickness

All dimensions in inches unless otherwise stated.

Item No.*	Min Bore	Max Bore	Outside Diameter	Pitch Diameter	Bottom Diameter	Hub Outside Diameter	LTB
81XC8F-XX	1.000	2.813	7.179	6.818	5.852	4.500	3.375
81XC9F-XX	1.250	3.438	8.048	7.628	6.662	5.250	3.875
81XC10F-XX	1.250	3.438	8.910	8.443	7.477	5.250	3.875
81XC11F-XX	1.250	3.438	9.765	9.261	8.295	5.250	3.875
81XC12F-XX	1.250	3.438	10.617	10.080	9.114	5.250	3.875
81XC13F-XX	1.250	3.438	11.465	10.902	9.936	5.250	3.875
81XC14F-XX	1.250	3.438	12.311	11.725	10.759	5.250	3.875
	3.500	3.938	12.311	11.725	10.759	6.500	5.000
81XC15F-XX	1.250	3.438	13.154	12.549	11.583	5.250	3.875
	3.500	3.938	12.311	11.725	10.759	6.500	5.000
81XC16F-XX	1.250	3.438	13.996	13.373	12.407	5.250	3.875
	3.500	3.938	12.311	11.725	10.759	6.500	5.000
81XC17F-XX	1.500	3.438	14.837	14.199	13.233	5.500	4.250
	3.500	3.938	12.311	11.725	10.759	6.500	5.000
81XC18F-XX	1.500	3.438	15.676	15.025	14.059	5.500	4.250
	3.500	3.938	12.311	11.725	10.759	6.500	5.000
81XC19F-XX	1.500	3.438	16.515	15.851	14.885	5.500	4.250
	3.500	3.938	12.311	11.725	10.759	6.500	5.000
81XC20F-XX	1.500	3.438	17.353	16.678	15.712	5.500	4.250
	3.500	3.938	12.311	11.725	10.759	6.500	5.000

\*XX = Tsubaki Bore Code.

See 'Common Bore Codes' table for reference.

\*\*For additional bore sizes, please contact Tsubaki.

### Common Bore Codes\*\*

1R	2G	2R	3G	3R
1.9375	2.4375	2.9375	3.4375	3.9375



## 81X - Idler Split

2.609" Pitch / 0.906" Barrel Diameter / 0.875" Plate Thickness

All dimensions in inches unless otherwise stated.

Chain	Type	Teeth	Item No.	Bore	Outside Diameter	Pitch Diameter	Bottom Diameter	Hub Outside Diameter	LTB
81X	C	10	81XC10X1GURE-SPLIT	1.438	8.910	8.443	7.477	4.375	3.500
			81XC10X1RURE-SPLIT	1.938	8.910	8.443	7.477	4.375	3.500
			81XC10X2CURE-SPLIT	2.188	8.910	8.443	7.477	6.000	3.750
			81XC10X2GURE-SPLIT	2.438	8.910	8.443	7.477	6.000	3.750
			81XC10X2RURE-SPLIT	2.938	8.910	8.443	7.477	6.000	3.750
81X	C	11	81XC11X1GURE-SPLIT	1.438	9.765	9.261	8.295	4.375	3.500
			81XC11X1RURE-SPLIT	1.938	9.765	9.261	8.295	4.375	3.500
			81XC11X2CURE-SPLIT	2.188	9.765	9.261	8.295	6.000	3.750
			81XC11X2GURE-SPLIT	2.438	9.765	9.261	8.295	6.000	3.750
			81XC11X2RURE-SPLIT	2.938	9.765	9.261	8.295	6.000	3.750
81X	C	12	81XC12X1GURE-SPLIT	1.438	10.617	10.080	9.114	4.375	3.500
			81XC12X1RURE-SPLIT	1.938	10.617	10.080	9.114	4.375	3.500
			81XC12X2CURE-SPLIT	2.188	10.617	10.080	9.114	6.000	3.750
			81XC12X2GURE-SPLIT	2.438	10.617	10.080	9.114	6.000	3.750
			81XC12X2RURE-SPLIT	2.938	10.617	10.080	9.114	6.000	3.750
			81XC12X3GURE-SPLIT	3.438	10.617	10.080	9.114	7.625	4.000
81X	C	13	81XC13X1GURE-SPLIT	1.438	11.465	10.902	9.936	4.375	3.500
			81XC13X1RURE-SPLIT	1.938	11.465	10.902	9.936	4.375	3.500
			81XC13X2CURE-SPLIT	2.188	11.465	10.902	9.936	6.000	3.750
			81XC13X2GURE-SPLIT	2.438	11.465	10.902	9.936	6.000	3.750
			81XC13X2RURE-SPLIT	2.938	11.465	10.902	9.936	6.000	3.750
			81XC13X3GURE-SPLIT	3.438	11.465	10.902	9.936	7.625	4.000
81X	C	14	81XC14X1GURE-SPLIT	1.438	12.311	11.725	10.759	4.375	3.500
			81XC14X1RURE-SPLIT	1.938	12.311	11.725	10.759	4.375	3.500
			81XC14X2CURE-SPLIT	2.188	12.311	11.725	10.759	6.000	3.750
			81XC14X2GURE-SPLIT	2.438	12.311	11.725	10.759	6.000	3.750
			81XC14X2RURE-SPLIT	2.938	12.311	11.725	10.759	6.000	3.750
			81XC14X3GURE-SPLIT	3.438	12.311	11.725	10.759	7.625	4.000
81X	C	15	81XC15X1GURE-SPLIT	1.438	13.154	12.549	11.583	4.375	3.500
			81XC15X1RURE-SPLIT	1.938	13.154	12.549	11.583	4.375	3.500
			81XC15X2CURE-SPLIT	2.188	13.154	12.549	11.583	6.000	3.750
			81XC15X2GURE-SPLIT	2.438	13.154	12.549	11.583	6.000	3.750
			81XC15X2RURE-SPLIT	2.938	13.154	12.549	11.583	6.000	3.750
			81XC15X3GURE-SPLIT	3.438	13.154	12.549	11.583	7.625	4.000

# MILL CHAIN SPROCKETS

## 81X - B Style Split

2.609" Pitch / 0.906" Barrel Diameter / 0.875" Plate Thickness

All dimensions in inches unless otherwise stated.

Item No.*	Min Bore	Max Bore	Outside Diameter	Pitch Diameter	Bottom Diameter	Hub Outside Diameter	LTB
81XB8F-XX-SPLIT	0.500	1.500	7.179	6.818	5.852	3.125	1.875
81XB9F-XX-SPLIT	0.500	1.500	8.048	7.628	6.662	3.125	1.875
81XB10F-XX-SPLIT	1.125	2.438	8.910	8.443	7.477	4.375	2.125
81XB11F-XX-SPLIT	1.125	2.438	9.765	9.261	8.295	4.375	2.125
81XB12F-XX-SPLIT	1.125	2.438	10.617	10.080	9.114	4.375	2.125
81XB13F-XX-SPLIT	1.125	2.438	11.465	10.902	9.936	4.375	2.125
81XB14F-XX-SPLIT	1.125	2.438	12.311	11.725	10.759	4.375	2.125
	2.500	3.438	12.311	11.725	10.759	6.000	2.250
81XB15F-XX-SPLIT	1.125	2.438	13.154	12.549	11.583	4.375	2.125
	2.500	3.438	13.154	12.549	11.583	6.000	2.250
81XB16F-XX-SPLIT	1.125	2.438	13.996	13.373	12.407	4.375	2.125
	2.500	3.438	13.996	13.373	12.407	6.000	2.250
81XB17F-XX-SPLIT	1.750	3.438	14.837	14.199	13.233	6.000	2.250
	3.500	4.000	14.837	14.199	13.233	7.625	2.375
81XB18F-XX-SPLIT	1.750	3.438	15.676	15.025	14.059	6.000	2.250
	3.500	4.000	15.676	15.025	14.059	7.625	2.375
81XB19F-XX-SPLIT	1.750	3.438	16.515	15.851	14.885	6.000	2.250
	3.500	4.000	16.515	15.851	14.885	7.625	2.375
81XB20F-XX-SPLIT	1.750	3.438	17.353	16.678	15.712	6.000	2.250
	3.500	4.000	17.353	16.678	15.712	7.625	2.375

\*XX = Tsubaki Bore Code.

See 'Common Bore Codes' table for reference.

\*\*For additional bore sizes, please contact Tsubaki.

### Common Bore Codes\*\*

1R	2G	2R	3G	3R
1.9375	2.4375	2.9375	3.4375	3.9375

## 81X - C Style Split

2.609" Pitch / 0.906" Barrel Diameter / 0.875" Plate Thickness

All dimensions in inches unless otherwise stated.

Item No.*	Min Bore	Max Bore	Outside Diameter	Pitch Diameter	Bottom Diameter	Hub Outside Diameter	LTB
81XC8F-XX-SPLIT	0.500	1.500	7.179	6.818	5.852	3.125	3.000
81XC9F-XX-SPLIT	0.500	1.500	8.048	7.628	6.662	3.125	3.000
81XC10F-XX-SPLIT	1.125	2.438	8.910	8.443	7.477	4.375	3.500
81XC11F-XX-SPLIT	1.125	2.438	9.765	9.261	8.295	4.375	3.500
81XC12F-XX-SPLIT	1.125	2.438	10.617	10.080	9.114	4.375	3.500
81XC13F-XX-SPLIT	1.125	2.438	11.465	10.902	9.936	4.375	3.500
81XC14F-XX-SPLIT	1.125	2.438	12.311	11.725	10.759	4.375	3.500
	2.500	3.438	12.311	11.725	10.759	6.000	3.750
81XC15F-XX-SPLIT	1.125	2.438	13.154	12.549	11.583	4.375	3.500
	2.500	3.438	13.154	12.549	11.583	6.000	3.750
81XC16F-XX-SPLIT	1.125	2.438	13.996	13.373	12.407	4.375	3.500
	2.500	3.438	13.996	13.373	12.407	6.000	3.750
81XC17F-XX-SPLIT	1.750	3.438	14.837	14.199	13.233	6.000	3.750
	3.500	4.000	14.837	14.199	13.233	7.625	4.000
81XC18F-XX-SPLIT	1.750	3.438	15.676	15.025	14.059	6.000	3.750
	3.500	4.000	15.676	15.025	14.059	7.625	4.000
81XC19F-XX-SPLIT	1.750	3.438	16.515	15.851	14.885	6.000	3.750
	3.500	4.000	16.515	15.851	14.885	7.625	4.000
81XC20F-XX-SPLIT	1.750	3.438	17.353	16.678	15.712	6.000	3.750
	3.500	4.000	17.353	16.678	15.712	7.625	4.000

\*XX = Tsubaki Bore Code.

See 'Common Bore Codes' table for reference.

\*\*For additional bore sizes, please contact Tsubaki.

### Common Bore Codes\*\*

1R	2G	2R	3G	3R
1.9375	2.4375	2.9375	3.4375	3.9375

# MILL CHAIN SPROCKETS

## WH82 - C Style Split

3.075" Pitch / 1" Barrel Diameter / 1.125" Plate Thickness

All dimensions in inches unless otherwise stated.

Size	Type	Teeth	Item No.*	Stock Bore	Bore		Outside Diameter	Pitch Diameter	Bottom Diameter	Hub Outside Diameter	LTB
					MIN	MAX					
82	C	9	82C9F-XX-SPLIT	1.125	1.500	2.250	9.448	8.991	74.931	4.375	3.625
				1.750	2.313	3.000	9.448	8.991	74.931	6.000	3.875
82	C	10	82C10F-XX-SPLIT	1.125	1.500	2.250	10.464	9.951	8.891	4.375	3.625
				1.750	2.313	3.000	10.464	9.951	8.891	6.000	3.875
				2.500	3.063	4.000	10.464	9.951	8.891	7.625	4.125
82	C	11	82C11F-XX-SPLIT	1.125	1.500	2.250	11.472	10.915	9.855	4.375	3.625
				1.750	2.313	3.000	11.472	10.915	9.855	6.000	3.875
				2.500	3.063	4.000	11.472	10.915	9.855	7.625	4.125
82	C	12	82C12F-XX-SPLIT	1.125	1.500	2.250	12.476	11.881	10.821	4.375	3.625
				1.750	2.313	3.000	12.476	11.881	10.821	6.000	3.875
				2.500	3.063	4.000	12.476	11.881	10.821	7.625	4.125
				3.500	4.063	5.000	12.476	11.881	10.821	9.250	5.125
82	C	13	82C13F-XX-SPLIT	1.125	1.500	2.250	13.476	12.849	11.789	4.375	3.625
				1.750	2.313	3.000	13.476	12.849	11.789	6.000	3.875
				2.500	3.063	4.000	13.476	12.849	11.789	7.625	4.125
				3.500	4.063	5.000	13.476	12.849	11.789	9.250	5.125
				4.500	5.063	6.000	13.476	12.849	11.789	10.250	5.625
82	C	14	82C14F-XX-SPLIT	1.125	1.500	2.250	14.472	13.819	12.759	4.375	3.625
				1.750	2.313	3.000	14.472	13.819	12.759	6.000	3.875
				2.500	3.063	4.000	14.472	13.819	12.759	7.625	4.125
				3.500	4.063	5.000	14.472	13.819	12.759	9.250	5.125
				4.500	5.063	6.000	14.472	13.819	12.759	10.250	5.625
82	C	15	82C15F-XX-SPLIT	1.125	1.500	2.250	15.467	14.790	13.730	4.375	3.625
				1.750	2.313	3.000	15.467	14.790	13.730	6.000	3.875
				2.500	3.063	4.000	15.467	14.790	13.730	7.625	4.125
				3.500	4.063	5.000	15.467	14.790	13.730	9.250	5.125
				4.500	5.063	6.000	15.467	14.790	13.730	10.250	5.625
				5.500	6.063	7.000	15.467	14.790	13.730	12.500	6.125
82	C	16	82C16F-XX-SPLIT	1.125	1.500	2.250	16.459	15.762	14.702	4.375	3.625
				1.750	2.313	3.000	16.459	15.762	14.702	6.000	3.875
				2.500	3.063	4.000	16.459	15.762	14.702	7.625	4.125
				3.500	4.063	5.000	16.459	15.762	14.702	9.250	5.125
				4.500	5.063	6.000	16.459	15.762	14.702	10.250	5.625
				5.500	6.063	7.000	16.459	15.762	14.702	12.500	6.125

\*XX = Tsubaki Bore Code.

See 'Common Bore Codes' table for reference.

\*\*For additional bore sizes, please contact Tsubaki.

Common Bore Codes**				
1R	2G	2R	3G	3R
1.9375	2.4375	2.9375	3.4375	3.9375

## WH82 - Idler Split

3.075" Pitch / 1" Barrel Diameter / 1.125" Plate Thickness

All dimensions in inches unless otherwise stated.

Chain	Type	Teeth	Idler Material	Item No.	Bore	Outside Diameter	Pitch Diameter	Bottom Diameter	Hub Outside Diameter	LTB
82	C	9	URETHANE	82C9X2GURE-SPLIT	2.438	9.448	8.991	7.931	6.000	3.875
				82C9X2RURE-SPLIT	2.938	9.448	8.991	7.931	7.625	4.125
				82C9X3GURE-SPLIT	3.438	9.448	8.991	7.931	7.625	4.125
82	C	10	URETHANE	82C10X2GURE-SPLIT	2.438	10.464	9.951	8.891	6.000	3.875
				82C10X2RURE-SPLIT	2.938	10.464	9.951	8.891	7.625	4.125
				82C10X3GURE-SPLIT	3.438	10.464	9.951	8.891	7.625	4.125
82	C	11	URETHANE	82C11X2GURE-SPLIT	2.438	11.472	10.915	9.855	6.000	3.875
				82C11X2RURE-SPLIT	2.938	11.472	10.915	9.855	7.625	4.125
				82C11X3GURE-SPLIT	3.438	11.472	10.915	9.855	7.625	4.125
82	C	12	URETHANE	82C12X2GURE-SPLIT	2.438	12.476	11.881	10.821	6.000	3.875
				82C12X2RURE-SPLIT	2.938	12.476	11.881	10.821	7.625	4.125
				82C12X3GURE-SPLIT	3.438	12.476	11.881	10.821	7.625	4.125
				82C12X3RURE-SPLIT	3.938	12.476	11.881	10.821	9.250	5.125
				82C12X4GURE-SPLIT	4.438	12.476	11.881	10.821	9.250	5.125
82	C	13	URETHANE	82C13X2GURE-SPLIT	2.438	13.476	12.849	11.789	6.000	3.875
				82C13X2RURE-SPLIT	2.938	13.476	12.849	11.789	7.625	4.125
				82C13X3GURE-SPLIT	3.438	13.476	12.849	11.789	7.625	4.125
				82C13X3RURE-SPLIT	3.938	13.476	12.849	11.789	9.250	5.125
				82C13X4GURE-SPLIT	4.438	13.476	12.849	11.789	9.250	5.125
82	C	14	URETHANE	82C14X2GURE-SPLIT	2.438	14.472	13.819	12.759	6.000	3.875
				82C14X2RURE-SPLIT	2.938	14.472	13.819	12.759	7.625	4.125
				82C14X3GURE-SPLIT	3.438	14.472	13.819	12.759	7.625	4.125
				82C14X3RURE-SPLIT	3.938	14.472	13.819	12.759	9.250	5.125
				82C14X4GURE-SPLIT	4.438	14.472	13.819	12.759	9.250	5.125
82	C	15	URETHANE	82C15X2GURE-SPLIT	2.438	15.467	14.790	13.730	6.000	3.875
				82C15X2RURE-SPLIT	2.938	15.467	14.790	13.730	7.625	4.125
				82C15X3GURE-SPLIT	3.438	15.467	14.790	13.730	7.625	4.125
				82C15X3RURE-SPLIT	3.938	15.467	14.790	13.730	9.250	5.125
				82C15X4GURE-SPLIT	4.438	15.467	14.790	13.730	9.250	5.125
82	C	16	URETHANE	82C16X2GURE-SPLIT	2.438	16.459	15.762	14.702	6.000	3.875
				82C16X2RURE-SPLIT	2.938	16.459	15.762	14.702	7.625	4.125
				82C16X3GURE-SPLIT	3.438	16.459	15.762	14.702	7.625	4.125
				82C16X3RURE-SPLIT	3.938	16.459	15.762	14.702	9.250	5.125
				82C16X4GURE-SPLIT	4.438	16.459	15.762	14.702	9.250	5.125

# MILL CHAIN SPROCKETS

## WH82 - Idler Split

3.075" Pitch / 1" Barrel Diameter / 1.125" Plate Thickness

All dimensions in inches unless otherwise stated.

Chain	Type	Teeth	Idler Material	Item No.	Bore	Outside Diameter	Pitch Diameter	Bottom Diameter	Hub Outside Diameter	LTB
82	C	9	660 BRONZE	82C9X2GBRZ-SPLIT	2.438	9.448	8.991	7.931	6.000	3.875
				82C9X2RBRZ-SPLIT	2.938	9.448	8.991	7.931	7.625	4.125
				82C9X3GBRZ-SPLIT	3.438	9.448	8.991	7.931	7.625	4.125
82	C	10	660 BRONZE	82C10X2GBRZ-SPLIT	2.438	10.464	9.951	8.891	6.000	3.875
				82C10X2RBRZ-SPLIT	2.938	10.464	9.951	8.891	7.625	4.125
				82C10X3GBRZ-SPLIT	3.438	10.464	9.951	8.891	7.625	4.125
82	C	11	660 BRONZE	82C11X2GBRZ-SPLIT	2.438	11.472	10.915	9.855	6.000	3.875
				82C11X2RBRZ-SPLIT	2.938	11.472	10.915	9.855	7.625	4.125
				82C11X3GBRZ-SPLIT	3.438	11.472	10.915	9.855	7.625	4.125
82	C	12	660 BRONZE	82C12X2GBRZ-SPLIT	2.438	12.476	11.881	10.821	6.000	3.875
				82C12X2RBRZ-SPLIT	2.938	12.476	11.881	10.821	7.625	4.125
				82C12X3GBRZ-SPLIT	3.438	12.476	11.881	10.821	7.625	4.125
				82C12X3RBRZ-SPLIT	3.938	12.476	11.881	10.821	9.250	5.125
				82C12X4GBRZ-SPLIT	4.438	12.476	11.881	10.821	9.250	5.125
82	C	13	660 BRONZE	82C13X2GBRZ-SPLIT	2.438	13.476	12.849	11.789	6.000	3.875
				82C13X2RBRZ-SPLIT	2.938	13.476	12.849	11.789	7.625	4.125
				82C13X3GBRZ-SPLIT	3.438	13.476	12.849	11.789	7.625	4.125
				82C13X3RBRZ-SPLIT	3.938	13.476	12.849	11.789	9.250	5.125
				82C13X4GBRZ-SPLIT	4.438	13.476	12.849	11.789	9.250	5.125
82	C	14	660 BRONZE	82C14X2GBRZ-SPLIT	2.438	14.472	13.819	12.759	6.000	3.875
				82C14X2RBRZ-SPLIT	2.938	14.472	13.819	12.759	7.625	4.125
				82C14X3GBRZ-SPLIT	3.438	14.472	13.819	12.759	7.625	4.125
				82C14X3RBRZ-SPLIT	3.938	14.472	13.819	12.759	9.250	5.125
				82C14X4GBRZ-SPLIT	4.438	14.472	13.819	12.759	9.250	5.125
82	C	15	660 BRONZE	82C15X2GBRZ-SPLIT	2.438	15.467	14.790	13.730	6.000	3.875
				82C15X2RBRZ-SPLIT	2.938	15.467	14.790	13.730	7.625	4.125
				82C15X3GBRZ-SPLIT	3.438	15.467	14.790	13.730	7.625	4.125
				82C15X3RBRZ-SPLIT	3.938	15.467	14.790	13.730	9.250	5.125
				82C15X4GBRZ-SPLIT	4.438	15.467	14.790	13.730	9.250	5.125
82	C	16	660 BRONZE	82C16X2GBRZ-SPLIT	2.438	16.459	15.762	14.702	6.000	3.875
				82C16X2RBRZ-SPLIT	2.938	16.459	15.762	14.702	7.625	4.125
				82C16X3GBRZ-SPLIT	3.438	16.459	15.762	14.702	7.625	4.125
				82C16X3RBRZ-SPLIT	3.938	16.459	15.762	14.702	9.250	5.125
				82C16X4GBRZ-SPLIT	4.438	16.459	15.762	14.702	9.250	5.125

## WH124 - C Style Split (Tooth Count 8 to 13)

4.000" Pitch / 1.25" Barrel Diameter / 1.5" Plate Thickness

All dimensions in inches unless otherwise stated.

Size	Type	Teeth	Item No.*	Stock Bore	Bore		Outside Diameter	Pitch Diameter	Bottom Diameter	Hub Outside Diameter	LTB
					MIN	MAX					
124	C	8	124C8F-XX-SPLIT	1.125	1.500	2.250	10.907	10.453	10.385	4.375	4.000
				1.750	2.313	3.000	10.907	10.453	10.385	6.000	4.250
				2.500	3.063	4.000	10.907	10.453	10.385	7.625	4.500
124	C	9	124C9F-XX-SPLIT	1.125	1.500	2.250	12.240	11.695	10.385	4.375	4.000
				1.750	2.313	3.000	12.240	11.695	10.385	6.000	4.250
				2.500	3.063	4.000	12.240	11.695	10.385	7.625	4.500
				3.500	4.063	5.000	12.240	11.695	10.385	9.250	5.500
124	C	10	124C10F-XX-SPLIT	1.125	1.500	2.250	13.561	12.944	11.634	4.375	4.000
				1.750	2.313	3.000	13.561	12.944	11.634	6.000	4.250
				2.500	3.063	4.000	13.561	12.944	11.634	7.625	4.500
				3.500	4.063	5.000	13.561	12.944	11.634	9.250	5.500
				4.500	5.063	6.000	13.561	12.944	11.634	10.250	6.000
124	C	11	124C11F-XX-SPLIT	1.125	1.500	2.250	14.873	14.198	12.888	4.375	4.000
				1.750	2.313	3.000	14.873	14.198	12.888	6.000	4.250
				2.500	3.063	4.000	14.873	14.198	12.888	7.625	4.500
				3.500	4.063	5.000	14.873	14.198	12.888	9.250	5.500
				4.500	5.063	6.000	14.873	14.198	12.888	10.250	6.000
124	C	12	124C12F-XX-SPLIT	1.125	1.500	2.250	16.178	15.455	14.145	4.375	4.000
				1.750	2.313	3.000	16.178	15.455	14.145	6.000	4.250
				2.500	3.063	4.000	16.178	15.455	14.145	7.625	4.500
				3.500	4.063	5.000	16.178	15.455	14.145	9.250	5.500
				4.500	5.063	6.000	16.178	15.455	14.145	10.250	6.000
				5.500	6.063	7.000	16.178	15.455	14.145	12.500	6.500
124	C	13	124C13F-XX-SPLIT	1.125	1.500	2.250	17.479	16.714	15.404	4.375	4.000
				1.750	2.313	3.000	17.479	16.714	15.404	6.000	4.250
				2.500	3.063	4.000	17.479	16.714	15.404	7.625	4.500
				3.500	4.063	5.000	17.479	16.714	15.404	9.250	5.500
				4.500	5.063	6.000	17.479	16.714	15.404	10.250	6.000
				5.500	6.063	7.000	17.479	16.714	15.404	12.500	6.500
				6.000	7.063	8.000	17.479	16.714	15.404	14.500	7.500

\*XX = Tsubaki Bore Code.

See 'Common Bore Codes' table for reference.

\*\*For additional bore sizes, please contact Tsubaki.

### Common Bore Codes\*\*

1R	2G	2R	3G	3R
1.9375	2.4375	2.9375	3.4375	3.9375

# MILL CHAIN SPROCKETS

## WH124 - C Style Split (Tooth Count 14 to 16)

4.000" Pitch / 1.25" Barrel Diameter / 1.5" Plate Thickness

All dimensions in inches unless otherwise stated.

Size	Type	Teeth	Item No.*	Stock Bore	Bore		Outside Diameter	Pitch Diameter	Bottom Diameter	Hub Outside Diameter	LTB
					MIN	MAX					
124	C	14	124C14F-XX-SPLIT	1.125	1.500	2.250	18.775	17.976	16.666	4.375	4.000
				1.750	2.313	3.000	18.775	17.976	16.666	6.000	4.250
				2.500	3.063	4.000	18.775	17.976	16.666	7.625	4.500
				3.500	4.063	5.000	18.775	17.976	16.666	9.250	5.500
				4.500	5.063	6.000	18.775	17.976	16.666	10.250	6.000
				5.500	6.063	7.000	18.775	17.976	16.666	12.500	6.500
				6.000	7.063	8.000	18.775	17.976	16.666	14.500	7.500
124	C	15	124C15F-XX-SPLIT	1.125	1.500	2.250	20.069	19.239	17.929	4.375	4.000
				1.750	2.313	3.000	20.069	19.239	17.929	6.000	4.250
				2.500	3.063	4.000	20.069	19.239	17.929	7.625	4.500
				3.500	4.063	5.000	20.069	19.239	17.929	9.250	5.500
				4.500	5.063	6.000	20.069	19.239	17.929	10.250	6.000
				5.500	6.063	7.000	20.069	19.239	17.929	12.500	6.500
				6.000	7.063	8.000	20.069	19.239	17.929	14.500	7.500
124	C	16	124C16F-XX-SPLIT	1.125	1.500	2.250	21.359	20.503	19.193	4.375	4.000
				1.750	2.313	3.000	21.359	20.503	19.193	6.000	4.250
				2.500	3.063	4.000	21.359	20.503	19.193	7.625	4.500
				3.500	4.063	5.000	21.359	20.503	19.193	9.250	5.500
				4.500	5.063	6.000	21.359	20.503	19.193	10.250	6.000
				5.500	6.063	7.000	21.359	20.503	19.193	12.500	6.500
				6.000	7.063	8.000	21.359	20.503	19.193	14.500	7.500

\*XX = Tsubaki Bore Code.

See 'Common Bore Codes' table for reference.

\*\*For additional bore sizes, please contact Tsubaki.

### Common Bore Codes\*\*

1R	2G	2R	3G	3R
1.9375	2.4375	2.9375	3.4375	3.9375



## WH124 - Idler Split

4.000" Pitch / 1.25" Barrel Diameter / 1.5" Plate Thickness

All dimensions in inches unless otherwise stated.

Chain	Type	Teeth	Idler Material	Item No.	Bore	Outside Diameter	Pitch Diameter	Bottom Diameter	Hub Outside Diameter	LTB
124	C	9	URETHANE	124C9X2GURE-SPLIT	2.438	12.240	11.695	10.385	6.000	4.250
				124C9X2RURE-SPLIT	2.938	12.240	11.695	10.385	7.625	4.500
				124C9X3GURE-SPLIT	3.438	12.240	11.695	10.385	7.625	4.500
124	C	10	URETHANE	124C10X2GURE-SPLIT	2.438	13.561	12.944	11.634	6.000	4.250
				124C10X2RURE-SPLIT	2.938	13.561	12.944	11.634	7.625	4.500
				124C10X3GURE-SPLIT	3.438	13.561	12.944	11.634	7.625	4.500
				124C10X3RURE-SPLIT	3.938	13.561	12.944	11.634	9.250	5.500
				124C10X4GURE-SPLIT	4.438	13.561	12.944	11.634	9.250	5.500
124	C	11	URETHANE	124C11X2GURE-SPLIT	2.438	14.873	14.198	12.888	6.000	4.250
				124C11X2RURE-SPLIT	2.938	14.873	14.198	12.888	7.625	4.500
				124C11X3GURE-SPLIT	3.438	14.873	14.198	12.888	7.625	4.500
				124C11X3RURE-SPLIT	3.938	14.873	14.198	12.888	9.250	5.500
				124C11X4GURE-SPLIT	4.438	14.873	14.198	12.888	9.250	5.500
124	C	12	URETHANE	124C12X2GURE-SPLIT	2.438	16.178	15.455	14.145	6.000	4.250
				124C12X2RURE-SPLIT	2.938	16.178	15.455	14.145	7.625	4.500
				124C12X3GURE-SPLIT	3.438	16.178	15.455	14.145	7.625	4.500
				124C12X3RURE-SPLIT	3.938	16.178	15.455	14.145	9.250	5.500
				124C12X4GURE-SPLIT	4.438	16.178	15.455	14.145	9.250	5.500
124	C	13	URETHANE	124C13X2GURE-SPLIT	2.438	17.479	16.714	15.404	6.000	4.250
				124C13X2RURE-SPLIT	2.938	17.479	16.714	15.404	7.625	4.500
				124C13X3GURE-SPLIT	3.438	17.479	16.714	15.404	7.625	4.500
				124C13X3RURE-SPLIT	3.938	17.479	16.714	15.404	9.250	5.500
				124C13X4GURE-SPLIT	4.438	17.479	16.714	15.404	9.250	5.500
124	C	14	URETHANE	124C14X2GURE-SPLIT	2.438	18.775	17.976	16.666	6.000	4.250
				124C14X2RURE-SPLIT	2.938	18.775	17.976	16.666	7.625	4.500
				124C14X3GURE-SPLIT	3.438	18.775	17.976	16.666	7.625	4.500
				124C14X3RURE-SPLIT	3.938	18.775	17.976	16.666	9.250	5.500
				124C14X4GURE-SPLIT	4.438	18.775	17.976	16.666	9.250	5.500
124	C	15	URETHANE	124C15X2GURE-SPLIT	2.438	20.069	19.239	17.929	6.000	4.250
				124C15X2RURE-SPLIT	2.938	20.069	19.239	17.929	7.625	4.500
				124C15X3GURE-SPLIT	3.438	20.069	19.239	17.929	7.625	4.500
				124C15X3RURE-SPLIT	3.938	20.069	19.239	17.929	9.250	5.500
				124C15X4GURE-SPLIT	4.438	20.069	19.239	17.929	9.250	5.500

# MILL CHAIN SPROCKETS

## WH124 - Idler Split

4.000" Pitch / 1.25" Barrel Diameter / 1.5" Plate Thickness

All dimensions in inches unless otherwise stated.

Chain	Type	Teeth	Idler Material	Item No.	Bore	Outside Diameter	Pitch Diameter	Bottom Diameter	Hub Outside Diameter	LTB
124	C	9	660 BRONZE	124C9X2GBRZ-SPLIT	2.438	12.240	11.695	10.385	6.000	4.250
				124C9X2RBRZ-SPLIT	2.938	12.240	11.695	10.385	7.625	4.500
				124C9X3GBRZ-SPLIT	3.438	12.240	11.695	10.385	7.625	4.500
124	C	10	660 BRONZE	124C10X2GBRZ-SPLIT	2.438	13.561	12.944	11.634	6.000	4.250
				124C10X2RBRZ-SPLIT	2.938	13.561	12.944	11.634	7.625	4.500
				124C10X3GBRZ-SPLIT	3.438	13.561	12.944	11.634	7.625	4.500
				124C10X3RBRZ-SPLIT	3.938	13.561	12.944	11.634	9.250	5.500
				124C10X4GBRZ-SPLIT	4.438	13.561	12.944	11.634	9.250	5.500
124	C	11	660 BRONZE	124C11X2GBRZ-SPLIT	2.438	14.873	14.198	12.888	6.000	4.250
				124C11X2RBRZ-SPLIT	2.938	14.873	14.198	12.888	7.625	4.500
				124C11X3GBRZ-SPLIT	3.438	14.873	14.198	12.888	7.625	4.500
				124C11X3RBRZ-SPLIT	3.938	14.873	14.198	12.888	9.250	5.500
				124C11X4GBRZ-SPLIT	4.438	14.873	14.198	12.888	9.250	5.500
124	C	12	660 BRONZE	124C12X2GBRZ-SPLIT	2.438	16.178	15.455	14.145	6.000	4.250
				124C12X2RBRZ-SPLIT	2.938	16.178	15.455	14.145	7.625	4.500
				124C12X3GBRZ-SPLIT	3.438	16.178	15.455	14.145	7.625	4.500
				124C12X3RBRZ-SPLIT	3.938	16.178	15.455	14.145	9.250	5.500
				124C12X4GBRZ-SPLIT	4.438	16.178	15.455	14.145	9.250	5.500
124	C	13	660 BRONZE	124C13X2GBRZ-SPLIT	2.438	17.479	16.714	15.404	6.000	4.250
				124C13X2RBRZ-SPLIT	2.938	17.479	16.714	15.404	7.625	4.500
				124C13X3GBRZ-SPLIT	3.438	17.479	16.714	15.404	7.625	4.500
				124C13X3RBRZ-SPLIT	3.938	17.479	16.714	15.404	9.250	5.500
				124C13X4GBRZ-SPLIT	4.438	17.479	16.714	15.404	9.250	5.500
124	C	14	660 BRONZE	124C14X2GBRZ-SPLIT	2.438	18.775	17.976	16.666	6.000	4.250
				124C14X2RBRZ-SPLIT	2.938	18.775	17.976	16.666	7.625	4.500
				124C14X3GBRZ-SPLIT	3.438	18.775	17.976	16.666	7.625	4.500
				124C14X3RBRZ-SPLIT	3.938	18.775	17.976	16.666	9.250	5.500
				124C14X4GBRZ-SPLIT	4.438	18.775	17.976	16.666	9.250	5.500
124	C	15	660 BRONZE	124C15X2GBRZ-SPLIT	2.438	20.069	19.239	17.929	6.000	4.250
				124C15X2RBRZ-SPLIT	2.938	20.069	19.239	17.929	7.625	4.500
				124C15X3GBRZ-SPLIT	3.438	20.069	19.239	17.929	7.625	4.500
				124C15X3RBRZ-SPLIT	3.938	20.069	19.239	17.929	9.250	5.500
				124C15X4GBRZ-SPLIT	4.438	20.069	19.239	17.929	9.250	5.500

## WH132 - C Style Split (Tooth Count 8 to 12)

6.050" Pitch / 1.75" Barrel Diameter / 2.75" Plate Thickness

All dimensions in inches unless otherwise stated.

Size	Type	Teeth	Item No.*	Stock Bore	Bore		Outside Diameter	Pitch Diameter	Bottom Diameter	Hub Outside Diameter	LTB
					MIN	MAX					
132	C	8	132C8F-XX-SPLIT	1.125	1.500	2.250	16.356	15.809	13.999	4.375	5.500
				1.750	2.313	3.000	16.356	15.809	13.999	6.000	5.750
				2.500	3.063	4.000	16.356	15.809	13.999	7.625	6.000
				3.500	4.063	5.000	16.356	15.809	13.999	9.250	7.000
				4.500	5.063	6.000	16.356	15.809	13.999	10.250	7.500
132	C	9	132C9F-XX-SPLIT	1.125	1.500	2.250	18.372	17.689	15.879	4.375	5.500
				1.750	2.313	3.000	18.372	17.689	15.879	6.000	5.750
				2.500	3.063	4.000	18.372	17.689	15.879	7.625	6.000
				3.500	4.063	5.000	18.372	17.689	15.879	9.250	7.000
				4.500	5.063	6.000	18.372	17.689	15.879	10.250	7.500
132	C	10	132C10F-XX-SPLIT	1.125	1.500	2.250	20.370	19.578	17.768	4.375	5.500
				1.750	2.313	3.000	20.370	19.578	17.768	6.000	5.750
				2.500	3.063	4.000	20.370	19.578	17.768	7.625	6.000
				3.500	4.063	5.000	20.370	19.578	17.768	9.250	7.000
				4.500	5.063	6.000	20.370	19.578	17.768	10.250	7.500
132	C	11	132C11F-XX-SPLIT	1.125	1.500	2.250	22.354	21.474	19.664	4.375	5.500
				1.750	2.313	3.000	22.354	21.474	19.664	6.000	5.750
				2.500	3.063	4.000	22.354	21.474	19.664	7.625	6.000
				3.500	4.063	5.000	22.354	21.474	19.664	9.250	7.000
				4.500	5.063	6.000	22.354	21.474	19.664	10.250	7.500
132	C	12	132C12F-XX-SPLIT	1.125	1.500	2.250	24.329	23.375	21.565	4.375	5.500
				1.750	2.313	3.000	24.329	23.375	21.565	6.000	5.750
				2.500	3.063	4.000	24.329	23.375	21.565	7.625	6.000
				3.500	4.063	5.000	24.329	23.375	21.565	9.250	7.000
				4.500	5.063	6.000	24.329	23.375	21.565	10.250	7.500
132	C	12	132C12F-XX-SPLIT	5.500	6.063	7.000	24.329	23.375	21.565	12.500	8.000
				6.000	7.063	8.000	24.329	23.375	21.565	14.500	9.000
				6.000	7.063	8.000	24.329	23.375	21.565	14.500	9.000

\*XX = Tsubaki Bore Code.

See 'Common Bore Codes' table for reference.

\*\*For additional bore sizes, please contact Tsubaki.

### Common Bore Codes\*\*

1R	2G	2R	3G	3R
1.9375	2.4375	2.9375	3.4375	3.9375

# MILL CHAIN SPROCKETS

## WH132 - C Style Split (Tooth Count 13 to 25)

6.050" Pitch / 1.75" Barrel Diameter / 2.75" Plate Thickness

All dimensions in inches unless otherwise stated.

Size	Type	Teeth	Item No.*	Stock Bore	Bore		Outside Diameter	Pitch Diameter	Bottom Diameter	Hub Outside Diameter	LTB
					MIN	MAX					
132	C	13	132C13F-XX-SPLIT	1.125	1.500	2.250	26.296	25.280	23.470	4.375	5.500
				1.750	2.313	3.000	26.296	25.280	23.470	6.000	5.750
				2.500	3.063	4.000	26.296	25.280	23.470	7.625	6.000
				3.500	4.063	5.000	26.296	25.280	23.470	9.250	7.000
				4.500	5.063	6.000	26.296	25.280	23.470	10.250	7.500
				5.500	6.063	7.000	26.296	25.280	23.470	12.500	8.000
				6.000	7.063	8.000	26.296	25.280	23.470	14.500	9.000
132	C	14	132C14F-XX-SPLIT	1.125	1.500	2.250	28.257	27.188	25.378	4.375	5.500
				1.750	2.313	3.000	28.257	27.188	25.378	6.000	5.750
				2.500	3.063	4.000	28.257	27.188	25.378	7.625	6.000
				3.500	4.063	5.000	28.257	27.188	25.378	9.250	7.000
				4.500	5.063	6.000	28.257	27.188	25.378	10.250	7.500
				5.500	6.063	7.000	28.257	27.188	25.378	12.500	8.000
				6.000	7.063	8.000	28.257	27.188	25.378	14.500	9.000
132	C	16	132C16F-XX-SPLIT	1.125	1.500	2.250	32.165	31.011	29.201	4.375	5.500
				1.750	2.313	3.000	32.165	31.011	29.201	6.000	5.750
				2.500	3.063	4.000	32.165	31.011	29.201	7.625	6.000
				3.500	4.063	5.000	32.165	31.011	29.201	9.250	7.000
				4.500	5.063	6.000	32.165	31.011	29.201	10.250	7.500
				5.500	6.063	7.000	32.165	31.011	29.201	12.500	8.000
				6.000	7.063	8.000	32.165	31.011	29.201	14.500	9.000
132	C	20	132C20F-XX-SPLIT	1.750	2.313	3.000	39.948	38.367	36.862	6.000	5.750
				2.500	3.063	4.000	39.948	38.367	36.862	7.625	6.000
				3.500	4.063	5.000	39.948	38.367	36.862	9.250	7.000
				4.500	5.063	6.000	39.948	38.367	36.862	10.250	7.500
				5.500	6.063	7.000	39.948	38.367	36.862	12.500	8.000
				6.000	7.063	8.000	39.948	38.367	36.862	14.500	9.000
132	C	25	132C25F-XX-SPLIT	2.500	3.063	4.000	49.641	48.271	46.463	7.625	6.000
				3.500	4.063	5.000	49.641	48.271	46.463	9.250	7.000
				4.500	5.063	6.000	49.641	48.271	46.463	10.250	7.500
				5.500	6.063	7.000	49.641	48.271	46.463	12.500	8.000
				6.000	7.063	8.000	49.641	48.271	46.463	14.500	9.000

\*XX = Tsubaki Bore Code.

See 'Common Bore Codes' table for reference.

\*\*For additional bore sizes, please contact Tsubaki.

### Common Bore Codes\*\*

1R	2G	2R	3G	3R
1.9375	2.4375	2.9375	3.4375	3.9375

## WH132 - Idler Split

6.050" Pitch / 1.75" Barrel Diameter / 2.75" Plate Thickness

All dimensions in inches unless otherwise stated.

Chain	Type	Teeth	Idler Material	Item No.	Bore	Outside Diameter	Pitch Diameter	Bottom Diameter	Hub Outside Diameter	LTB
132	C	8	URETHANE	132C8X2GURE-SPLIT	2.438	16.356	15.809	13.999	6.000	5.750
				132C8X2RURE-SPLIT	2.938	16.356	15.809	13.999	7.625	6.000
				132C8X3GURE-SPLIT	3.438	16.356	15.809	13.999	7.625	6.000
				132C8X3RURE-SPLIT	3.938	16.356	15.809	13.999	9.250	7.000
				132C8X4GURE-SPLIT	4.438	16.356	15.809	13.999	9.250	7.000
132	C	9	URETHANE	132C9X2GURE-SPLIT	2.438	18.372	17.689	15.879	6.000	5.750
				132C9X2RURE-SPLIT	2.938	18.372	17.689	15.879	7.625	6.000
				132C9X3GURE-SPLIT	3.438	18.372	17.689	15.879	7.625	6.000
				132C9X3RURE-SPLIT	3.938	18.372	17.689	15.879	9.250	7.000
				132C9X4GURE-SPLIT	4.438	18.372	17.689	15.879	9.250	7.000
132	C	10	URETHANE	132C10X2GURE-SPLIT	2.438	20.370	19.578	17.768	6.000	5.750
				132C10X2RURE-SPLIT	2.938	20.370	19.578	17.768	7.625	6.000
				132C10X3GURE-SPLIT	3.438	20.370	19.578	17.768	7.625	6.000
				132C10X3RURE-SPLIT	3.938	20.370	19.578	17.768	9.250	7.000
				132C10X4GURE-SPLIT	4.438	20.370	19.578	17.768	9.250	7.000
132	C	8	660 BRONZE	132C8X2GBRZ-SPLIT	2.438	16.356	15.809	13.999	6.000	5.750
				132C8X2RBRZ-SPLIT	2.938	16.356	15.809	13.999	7.625	6.000
				132C8X3GBRZ-SPLIT	3.438	16.356	15.809	13.999	7.625	6.000
				132C8X3RBRZ-SPLIT	3.938	16.356	15.809	13.999	9.250	7.000
				132C8X4GBRZ-SPLIT	4.438	16.356	15.809	13.999	9.250	7.000
132	C	9	660 BRONZE	132C9X2GBRZ-SPLIT	2.438	18.372	17.689	15.879	6.000	5.750
				132C9X2RBRZ-SPLIT	2.938	18.372	17.689	15.879	7.625	6.000
				132C9X3GBRZ-SPLIT	3.438	18.372	17.689	15.879	7.625	6.000
				132C9X3RBRZ-SPLIT	3.938	18.372	17.689	15.879	9.250	7.000
				132C9X4GBRZ-SPLIT	4.438	18.372	17.689	15.879	9.250	7.000
132	C	10	660 BRONZE	132C10X2GBRZ-SPLIT	2.438	20.370	19.578	17.768	6.000	5.750
				132C10X2RBRZ-SPLIT	2.938	20.370	19.578	17.768	7.625	6.000
				132C10X3GBRZ-SPLIT	3.438	20.370	19.578	17.768	7.625	6.000
				132C10X3RBRZ-SPLIT	3.938	20.370	19.578	17.768	9.250	7.000
				132C10X4GBRZ-SPLIT	4.438	20.370	19.578	17.768	9.250	7.000

# MILL CHAIN SPROCKETS

## WH157- C Style Split (Tooth Count 8 to 12)

6.050" Pitch / 1.75" Barrel Diameter / 2.75" Plate Thickness

All dimensions in inches unless otherwise stated.

Size	Type	Teeth	Item No.*	Stock Bore	Bore		Outside Diameter	Pitch Diameter	Bottom Diameter	Hub Outside Diameter	LTB
					MIN	MAX					
157	C	8	157C8F-XX-SPLIT	1.125	1.500	2.250	16.356	15.809	13.999	4.375	5.500
				1.750	2.313	3.000	16.356	15.809	13.999	6.000	5.750
				2.500	3.063	4.000	16.356	15.809	13.999	7.625	6.000
				3.500	4.063	5.000	16.356	15.809	13.999	9.250	7.000
				4.500	5.063	6.000	16.356	15.809	13.999	10.250	7.500
157	C	9	157C9F-XX-SPLIT	1.125	1.500	2.250	18.372	17.689	15.879	4.375	5.500
				1.750	2.313	3.000	18.372	17.689	15.879	6.000	5.750
				2.500	3.063	4.000	18.372	17.689	15.879	7.625	6.000
				3.500	4.063	5.000	18.372	17.689	15.879	9.250	7.000
				4.500	5.063	6.000	18.372	17.689	15.879	10.250	7.500
157	C	10	157C10F-XX-SPLIT	1.125	1.500	2.250	20.370	19.578	17.768	4.375	5.500
				1.750	2.313	3.000	20.370	19.578	17.768	6.000	5.750
				2.500	3.063	4.000	20.370	19.578	17.768	7.625	6.000
				3.500	4.063	5.000	20.370	19.578	17.768	9.250	7.000
				4.500	5.063	6.000	20.370	19.578	17.768	10.250	7.500
157	C	11	157C11F-XX-SPLIT	1.125	1.500	2.250	22.354	21.474	19.664	4.375	5.500
				1.750	2.313	3.000	22.354	21.474	19.664	6.000	5.750
				2.500	3.063	4.000	22.354	21.474	19.664	7.625	6.000
				3.500	4.063	5.000	22.354	21.474	19.664	9.250	7.000
				4.500	5.063	6.000	22.354	21.474	19.664	10.250	7.500
157	C	12	157C12F-XX-SPLIT	1.125	1.500	2.250	24.329	23.375	21.565	4.375	5.500
				1.750	2.313	3.000	24.329	23.375	21.565	6.000	5.750
				2.500	3.063	4.000	24.329	23.375	21.565	7.625	6.000
				3.500	4.063	5.000	24.329	23.375	21.565	9.250	7.000
				4.500	5.063	6.000	24.329	23.375	21.565	10.250	7.500
157	C	12	157C12F-XX-SPLIT	5.500	6.063	7.000	24.329	23.375	21.565	12.500	8.000
				6.000	7.063	8.000	24.329	23.375	21.565	14.500	9.000

\*XX = Tsubaki Bore Code.

See 'Common Bore Codes' table for reference.

\*\*For additional bore sizes, please contact Tsubaki.

### Common Bore Codes\*\*

1R	2G	2R	3G	3R
1.9375	2.4375	2.9375	3.4375	3.9375

## WH157- C Style Split (Tooth Count 13 to 25)

6.050" Pitch / 1.75" Barrel Diameter / 2.75" Plate Thickness

All dimensions in inches unless otherwise stated.

Size	Type	Teeth	Item No.*	Stock Bore	Bore		Outside Diameter	Pitch Diameter	Bottom Diameter	Hub Outside Diameter	LTB
					MIN	MAX					
157	C	13	157C13F-XX-SPLIT	1.125	1.500	2.250	26.296	25.280	23.470	4.375	5.500
				1.750	2.313	3.000	26.296	25.280	23.470	6.000	5.750
				2.500	3.063	4.000	26.296	25.280	23.470	7.625	6.000
				3.500	4.063	5.000	26.296	25.280	23.470	9.250	7.000
				4.500	5.063	6.000	26.296	25.280	23.470	10.250	7.500
				5.500	6.063	7.000	26.296	25.280	23.470	12.500	8.000
				6.000	7.063	8.000	26.296	25.280	23.470	14.500	9.000
157	C	14	157C14F-XX-SPLIT	1.125	1.500	2.250	28.257	27.188	25.378	4.375	5.500
				1.750	2.313	3.000	28.257	27.188	25.378	6.000	5.750
				2.500	3.063	4.000	28.257	27.188	25.378	7.625	6.000
				3.500	4.063	5.000	28.257	27.188	25.378	9.250	7.000
				4.500	5.063	6.000	28.257	27.188	25.378	10.250	7.500
				5.500	6.063	7.000	28.257	27.188	25.378	12.500	8.000
				6.000	7.063	8.000	28.257	27.188	25.378	14.500	9.000
157	C	16	157C16F-XX-SPLIT	1.125	1.500	2.250	32.165	31.011	29.201	4.375	5.500
				1.750	2.313	3.000	32.165	31.011	29.201	6.000	5.750
				2.500	3.063	4.000	32.165	31.011	29.201	7.625	6.000
				3.500	4.063	5.000	32.165	31.011	29.201	9.250	7.000
				4.500	5.063	6.000	32.165	31.011	29.201	10.250	7.500
				5.500	6.063	7.000	32.165	31.011	29.201	12.500	8.000
				6.000	7.063	8.000	32.165	31.011	29.201	14.500	9.000
157	C	20	157C20F-XX-SPLIT	1.750	2.313	3.000	39.948	38.367	36.862	6.000	5.750
				2.500	3.063	4.000	39.948	38.367	36.862	7.625	6.000
				3.500	4.063	5.000	39.948	38.367	36.862	9.250	7.000
				4.500	5.063	6.000	39.948	38.367	36.862	10.250	7.500
				5.500	6.063	7.000	39.948	38.367	36.862	12.500	8.000
				6.000	7.063	8.000	39.948	38.367	36.862	14.500	9.000
157	C	25	157C25F-XX-SPLIT	2.500	3.063	4.000	49.641	48.271	46.463	7.625	6.000
				3.500	4.063	5.000	49.641	48.271	46.463	9.250	7.000
				4.500	5.063	6.000	49.641	48.271	46.463	10.250	7.500
				5.500	6.063	7.000	49.641	48.271	46.463	12.500	8.000
				6.000	7.063	8.000	49.641	48.271	46.463	14.500	9.000

\*XX = Tsubaki Bore Code.

See 'Common Bore Codes' table for reference.

\*\*For additional bore sizes, please contact Tsubaki.

Common Bore Codes**				
1R	2G	2R	3G	3R
1.9375	2.4375	2.9375	3.4375	3.9375

# MILL CHAIN SPROCKETS

## WH157 - Idler Split

6.050" Pitch / 1.75" Barrel Diameter / 2.75" Plate Thickness

All dimensions in inches unless otherwise stated.

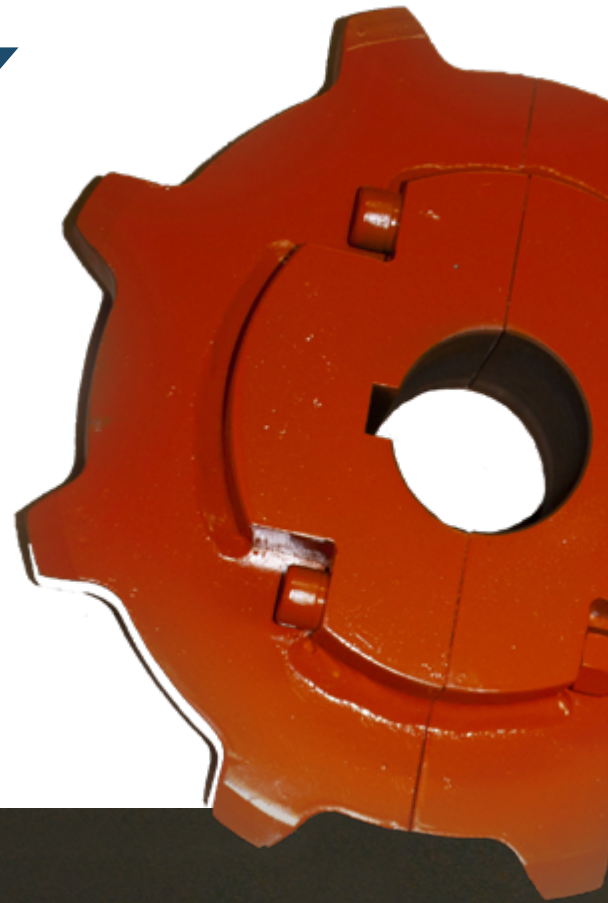
Chain	Type	Teeth	Idler Material	Item No.	Bore	Outside Diameter	Pitch Diameter	Bottom Diameter	Hub Outside Diameter	LTB
157	C	8	URETHANE	157C8X2GURE-SPLIT	2.438	16.356	15.809	13.999	6.000	5.750
				157C8X2RURE-SPLIT	2.938	16.356	15.809	13.999	7.625	6.000
				157C8X3GURE-SPLIT	3.438	16.356	15.809	13.999	7.625	6.000
				157C8X3RURE-SPLIT	3.938	16.356	15.809	13.999	9.250	7.000
				157C8X4GURE-SPLIT	4.438	16.356	15.809	13.999	9.250	7.000
157	C	9	URETHANE	157C9X2GURE-SPLIT	2.438	18.372	17.689	15.879	6.000	5.750
				157C9X2RURE-SPLIT	2.938	18.372	17.689	15.879	7.625	6.000
				157C9X3GURE-SPLIT	3.438	18.372	17.689	15.879	7.625	6.000
				157C9X3RURE-SPLIT	3.938	18.372	17.689	15.879	9.250	7.000
				157C9X4GURE-SPLIT	4.438	18.372	17.689	15.879	9.250	7.000
157	C	10	URETHANE	157C10X2GURE-SPLIT	2.438	20.370	19.578	17.768	6.000	5.750
				157C10X2RURE-SPLIT	2.938	20.370	19.578	17.768	7.625	6.000
				157C10X3GURE-SPLIT	3.438	20.370	19.578	17.768	7.625	6.000
				157C10X3RURE-SPLIT	3.938	20.370	19.578	17.768	9.250	7.000
				157C10X4GURE-SPLIT	4.438	20.370	19.578	17.768	9.250	7.000
157	C	8	660 BRONZE	157C8X2GBRZ-SPLIT	2.438	16.356	15.809	13.999	6.000	5.750
				157C8X2RBRZ-SPLIT	2.938	16.356	15.809	13.999	7.625	6.000
				157C8X3GBRZ-SPLIT	3.438	16.356	15.809	13.999	7.625	6.000
				157C8X3RBRZ-SPLIT	3.938	16.356	15.809	13.999	9.250	7.000
				157C8X4GBRZ-SPLIT	4.438	16.356	15.809	13.999	9.250	7.000
157	C	9	660 BRONZE	157C9X2GBRZ-SPLIT	2.438	18.372	17.689	15.879	6.000	5.750
				157C9X2RBRZ-SPLIT	2.938	18.372	17.689	15.879	7.625	6.000
				157C9X3GBRZ-SPLIT	3.438	18.372	17.689	15.879	7.625	6.000
				157C9X3RBRZ-SPLIT	3.938	18.372	17.689	15.879	9.250	7.000
				157C9X4GBRZ-SPLIT	4.438	18.372	17.689	15.879	9.250	7.000
157	C	10	660 BRONZE	157C10X2GBRZ-SPLIT	2.438	20.370	19.578	17.768	6.000	5.750
				157C10X2RBRZ-SPLIT	2.938	20.370	19.578	17.768	7.625	6.000
				157C10X3GBRZ-SPLIT	3.438	20.370	19.578	17.768	7.625	6.000
				157C10X3RBRZ-SPLIT	3.938	20.370	19.578	17.768	9.250	7.000
				157C10X4GBRZ-SPLIT	4.438	20.370	19.578	17.768	9.250	7.000



## OTHER PRODUCT OPTIONS

- Solid Construction
- Bearing Idlers
- Tapered Keyways
- Hardness Specification
- Material Specification
- Hub OD Specification
- LTB Specification
- High Tooth Profile
- OSB Spec Tooth Profile
- Smart Tooth
- A-Plates
- B Hubs
- Segmental
- Grease Groove and Zerk
- Hunting Tooth
- Locating Tabs
- Lifting Holes
- Lightning Holes
- Split Adjustable
- Drums
- Mill Chain

All options above are available upon request and may be quoted as **Made-To-Order (MTO)**



## SMART TOOTH

*When FAILURE is not an option*

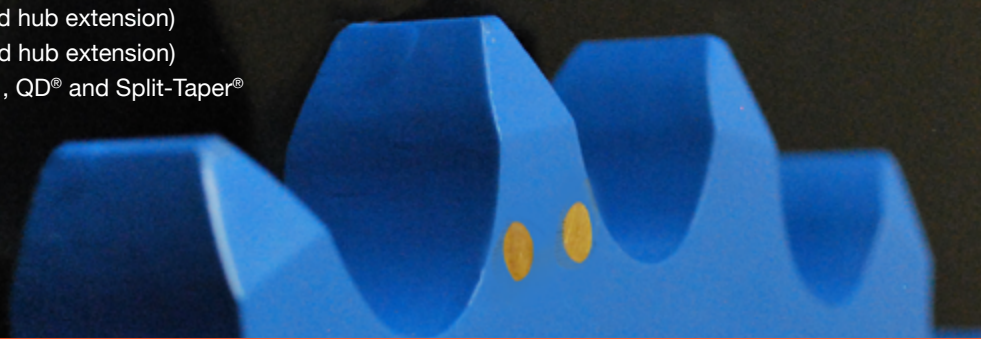
Tsubaki SMART TOOTH offers users the ability to identify and schedule drive system maintenance before critical component failure occurs. Strategic placement of our patented Wear Indicator pins on one or more sprocket teeth provides visual indication that a sprocket is still within the allowable wear tolerance, or that it needs to be replaced. When factoring in the cost of critical drive system components, implementation of Tsubaki Wear Indicator technology makes sense for applications that are driven by capital equipment, or where non-scheduled downtime is simply not acceptable.

### Availability

- ANSI 80 through 240 pitch sprockets
- British Standard & Double Pitch sprockets (1" pitch & over)
- Engineering Class sprockets
- Carbon steel sprockets
- Hardened and non-hardened teeth
- Type A (no hub extension)  
Type B (one-sided hub extension)  
Type C (two-sided hub extension)
- Taper-Lock®, XT®, QD® and Split-Taper® style sprockets

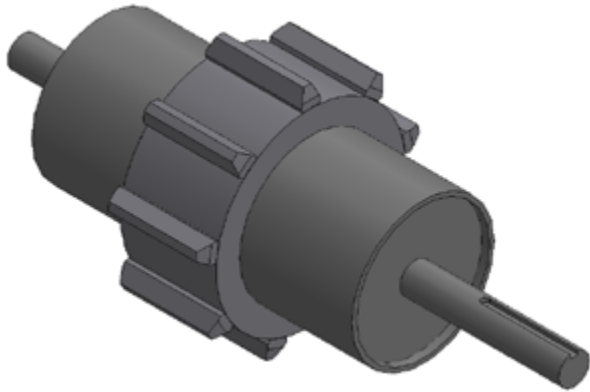
### Value

- Extended chain life through predictable maintenance
- Eliminates the guesswork associated with worn sprockets
- Reduces overall cost of equipment ownership
- Provides warning of catastrophic drive failure
- Provides the opportunity to schedule maintenance based on sprocket wear rate



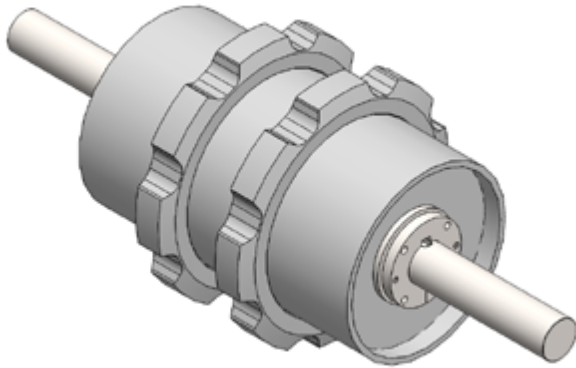
# DRUM SPROCKETS

## Full-Face vs. A-Plate Drum Sprockets



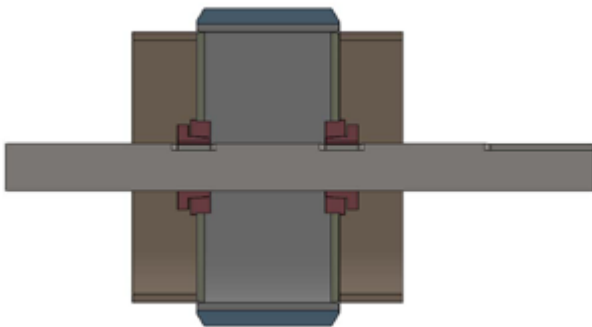
### Full-Face Drum Sprocket

Increased surface area resulting in lower contact pressure between the sprocket and chain, greater wear ability make full face the standard for most applications.



### A-Plate Drum Sprockets

A-Plate style can handle greater misalignment and provide bulk material pass-through, however, less contact area may result in lower life.

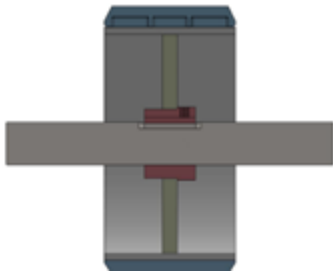


### Optional Style with Flange

Flanges are different than an extended shroud even though they can both service the same purpose. A flange is separate piece that is welded to a plate.

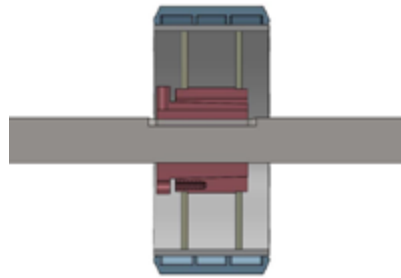
## Hub Styles

### Style 1



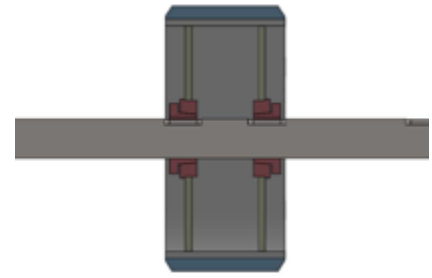
Style 1 for bores up to 3-15/16". Split Taper bushings are standard for single style hubs.

### Style 2



Style 2 with double hub plates are required for bores greater than 4".

### Style 3



For ease of installation XTBS type bushings are suggested for double hub construction

TYPE	BORE	BUSHING
Single	1-7/16" to 3-15/16"	S1
	4" to 4-15/16"	U1
	5" to 5-15/16"	W1
Multi	1-7/16" to 2-15/16"	XTB30
	3" to 3-7/16"	XTB35
	3-1/2" to 3-15/16"	XTB40
	4" to 4-7/16"	XTB45

### Shaft Assembly

Replacing shrunk fit components can be costly. Complete shaft assemblies reduce installation costs. Split to bolt sprockets reduce future maintenance costs.

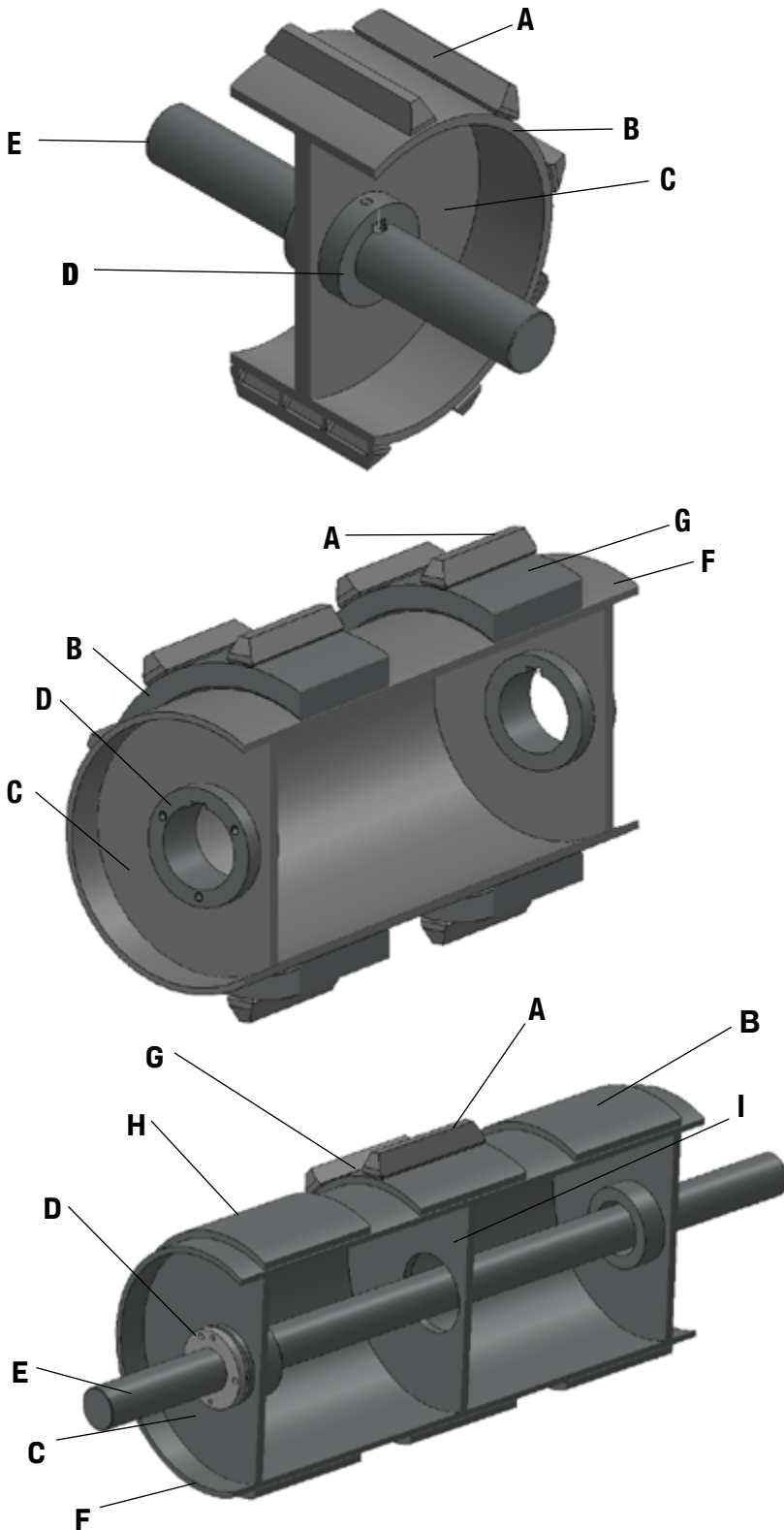
### Mounting Methods:

- Finished bore - Slip-Fit & Heat Shrunk
- Split-Taper, Taper-Lock & QD Bushing
- Split to Bolt
- Idler Sprockets (Bearing/Urethane/Bronze/Other)
- Keyless locking (e.g. Power-Lock)
- Bearing Installation



# DRUM SPROCKETS

## Single, Double, Triple Construction



### Single Drum Sprocket

Teeth engage with the chain and provide positive traction. The Can is the main structural member of a drum assembly. Optionally a drum assembly may be supplied with no teeth to create a Traction Wheel or Idler.

### Double Drum Sprocket

To provide structural rigidity and strength, multiple-strand drums are supplied with a Shroud. Optionally multiple-strand drums may be supplied without a Shroud at customer request.

### Triple Strand, Combination Sprocket & Traction Wheel

On triple drum assemblies and greater, Support Plates are installed to provide additional structural strength.

A	Teeth
B	Can
C	Hub Plate
D	Hub
E	Shaft
F	Shroud
G	Sprocket
H	Traction Wheel
I	Support Plate

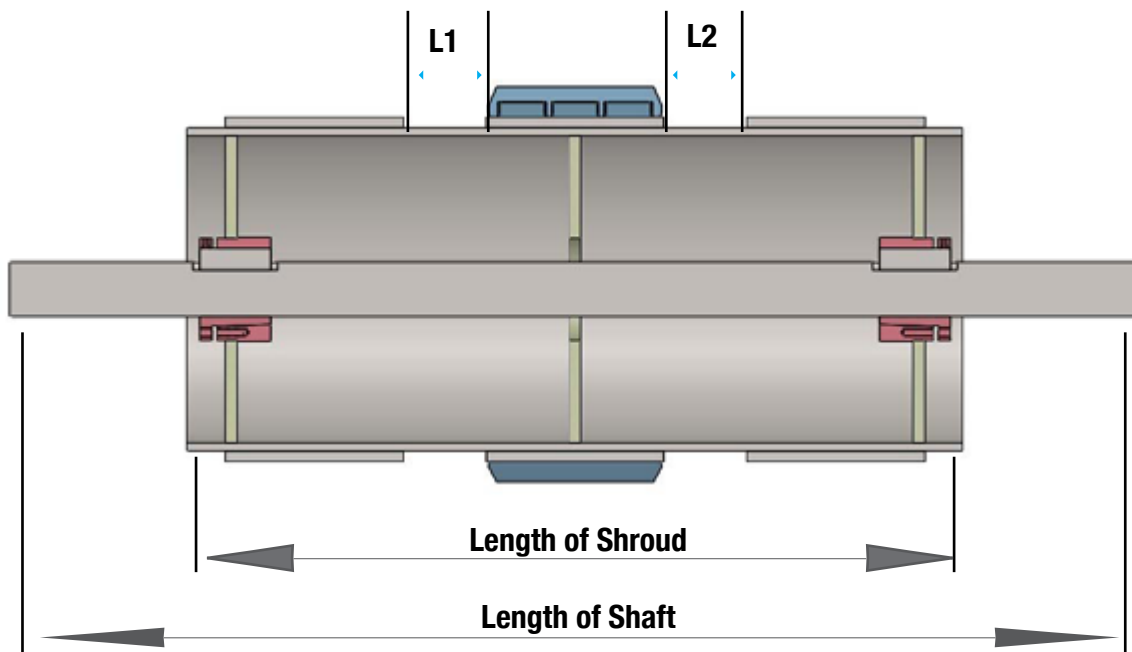
## Drum Sprocket Inquiry Sheet

Nomenclature / Part Number

DR-480-1-10-A

send inquiries to [insidesales@tsubaki.ca](mailto:insidesales@tsubaki.ca)

<b>DR</b>	<b>480</b>	<b>1</b>	<b>10</b>	<b>A</b>
Drum Assembly	Chain Number	# of Strands	# of Teeth	A plate style, otherwise full face is standard
Quantity		Number of Strands		
Chain Size		Number of Hub Plates		
Number of Teeth		Number of Hubs		
Bore		Mounting Type		



	STRAND 1	STRAND 2	STRAND 3	STRAND 4	STRAND 5
Sprocket or Traction Wheel?					
# of Effective Teeth					
Length between Strands	NA	L1=	L2=	L3=	L4=
Length of Shroud			Length of Shaft		
Shaft Keyway Width			# of Keyways		
Flange Diameter			Flange Length		

# DRUM SPROCKETS

## Drum Sprockets Dimensions

All dimensions in inches unless otherwise stated.

Sprocket Number	Pitch	Tooth Face	No. of Teeth	Catalogue Number	Maximum Bore	Pitch Diameter
WD102	5.000	6.375	6	WD102-6	3.9375	10.00
			8	WD102-8	5.9375	13.07
			9	WD102-9	5.9375	14.62
			10	WD102-10	5.9375	16.18
			12	WD102-12	5.9375	19.32
			13	WD102-13	5.9375	20.89
WD104	6.000	4.125	8	WD104-8	4.9375	15.68
			9	WD104-9	5.9375	17.54
			10	WD104-10	5.9375	19.42
			11	WD104-11	5.9375	21.30
WD110 and WD113	6.000	9.000	6	WD110-113-6	4.4375	12.00
			8	WD110-113-8	5.9375	15.68
			9	WD110-113-9	5.9375	17.54
			10	WD110-113-10	5.9375	19.42
			11	WD110-113-11	5.9375	21.30
WD112	8.000	9.000	7	WD112-7	4.9375	18.44
			8	WD112-8	5.9375	20.90
			9	WD112-9	5.9375	23.39
WD116	8.000	13.000	7	WD116-7	5.4375	18.44
			8	WD116-8	5.9375	20.90
			9	WD116-9	5.9375	23.39
WD118	8.000	13.000	7	WD118-7	5.4375	18.44
			8	WD118-8	5.9375	20.90
			9	WD118-9	5.9375	23.39
WD120	6.000	8.750	6	WD120-6	5.9375	12.00
			8	WD120-8	5.9375	15.68
			11	WD120-11	5.9375	21.30
WD122	8.000	8.750	6	WD122-6	5.4375	16.00
			7	WD122-7	5.4375	18.44
			9	WD122-9	5.9375	23.39
WD480	8.000	11.000	6	WD480-6	5.4375	16.00
			7	WD480-7	5.4375	18.44
			8	WD480-8	5.9375	20.90
			9	WD480-9	5.9375	23.39
			11	WD480-11	5.9375	28.40



## PROBLEM SOLVING PRODUCTS



Shock Relay



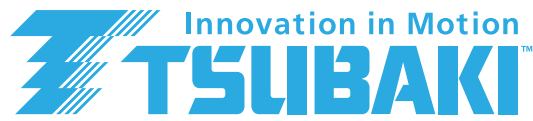
Atra-Flex Couplings



KabelSchlepp Steel Cable Carrier



Torque Limiter



Power-Lock



Power Cylinder



Continuous-Flex Cables



**Tsubaki of Canada Limited  
HEAD OFFICE & MANUFACTURING PLANT**

1630 Drew Road  
Mississauga, ON L5S 1J6  
Tel: (905) 676-0400  
(800) 263-7088  
After Hours Number: (905) 601-3043  
Fax: (905) 676-0904

**For sales inquiries:**  
insidesales@tsubaki.ca



**EDMONTON  
MANUFACTURING & WAREHOUSE**

10035-56th Avenue  
Edmonton, AB T6E 5L7  
Tel: (780) 438-6073  
(800) 661-8811  
After Hours Number: (780) 983-2202  
Fax: (780) 436-4929

**For sales inquiries:**  
insidesales@tsubaki.ca



**MAPLE RIDGE  
MANUFACTURING & WAREHOUSE**

9475 288 St.  
Maple Ridge, BC V2W 1L1  
Tel: (604) 462-7311  
(888) 462-4999  
Fax: (604) 462-7330

**For sales inquiries:**  
insidesales@tsubaki.ca

**CAT-MILL&DRUMSPROCKET**

Note: In accordance with the policy of Tsubaki of Canada Limited to consistently improve its products, the specifications in this catalogue are subject to change without notice. Please contact Tsubaki for current prices.

Copyright © 2023 Tsubaki of Canada Limited. Errors and Omissions Excepted.  
Disclaimer: Tsubaki of Canada Limited makes every effort to ensure that the information in this catalogue is current and accurate, but cannot accept responsibility or liability for any loss or damage suffered as a result of information contained herein.