

INDUSTRY EXPERIENCE with Tsubaki of Canada Limited

Forestry

When it comes to the Forestry industry no one can match the breadth of products and experience that Tsubaki offers. From a bull edger to a drop sorter to a planer drive, we understand your application needs. Sprockets are made in Canada to suit the widest range of machined steel bushing styles. Keyed in line, bored to suit and hardened teeth are features we understand.



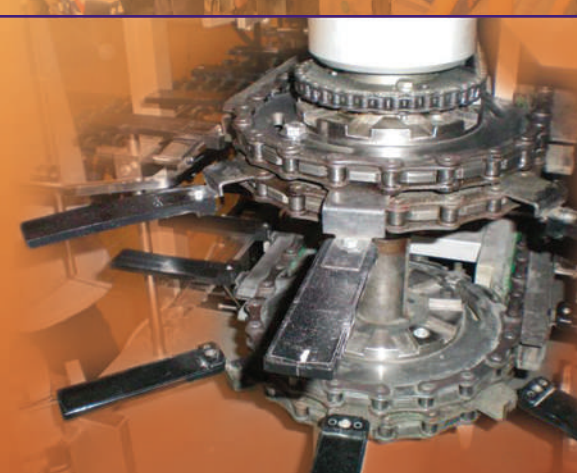
Mining

Tsubaki knows the abrasive materials and demanding conditions of the mining industry. Unique sprocket hardness levels are necessary depending on the material involved. Ease of assembly/disassembly is what Tsubaki can offer with split or bolt to hub design. Through our experience in Mining we developed unique value add features such as mud relief to improve performance, and tooth wear indicators for critical applications to assist in preventative maintenance.



Food

Bakery, Meat, Ice Cream, Chocolate and Food Processing all have unique applications with complex equipment design. Have confidence in Tsubaki's disciplined approach to quality in getting the specification right the first time for sprockets or other machined round parts. The increasing demand for wash down means corrosion protection is critical. Tsubaki has the application experience to make the best offering of materials (grades of stainless) and/or coatings (Neptune, nickel, zinc, etc).



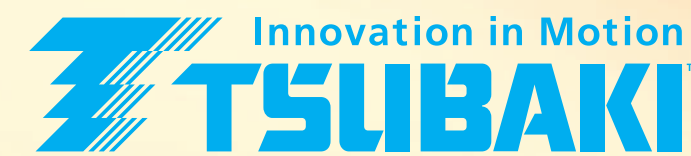
General Manufacturing

Our relationship with OEMs over many years of manufacturing in Canada has led us to the many unique products and assemblies that we make today. We have the experience in many processes of machined round part manufacturing to make your unique specification. Our component assembly increases the value we can offer as a supplier.



Capacities and Machining Centres

- Local manufacturing means rapid turnaround of your unique products and requirements
- Raw material sourcing
 - Local daily delivery of plate and bar
 - Forged ring
- Turning
- Milling
- Cutting
 - Machining
- Hobber
- Gasher
 - Flame Cut
- Slotting and Broaching
 - Spline
 - Keyway
- Heat Treat
 - Induction
 - Flame
 - Tempering and Quenching
- Finishing
 - Paint/Powder Coat/Oxide/Plate/Vibra-Finish



The Tsubaki Advantage

Known for expertise in the production of chain and sprockets, Tsubaki of Canada is also a centre of manufacturing excellence for customized round parts. If it can be mounted to a shaft, be assured that Tsubaki, from design to final product, can create it.

Don't need it immediately? Let Tsubaki's immense global supply chain facilitate the procurement of your products.

TSUBAKI of CANADA LIMITED

Head Office & Manufacturing Plant
1630 Drew Road, Mississauga, Ontario L5S 1J6 Canada
Phone: +1 (905) 676-0400 Facsimile: +1 (905) 676-0904

Edmonton Manufacturing & Warehouse
10035-56th Avenue, Edmonton, Alberta T6E 5L7 Canada
Phone: +1 (780) 438-6073 Facsimile: +1 (780) 436-4929

U.S. TSUBAKI, INC.
301 E. Marquardt Dr.
Wheeling, IL 60090-6497
U.S.A.
Phone: +1 (847) 459-9500
Facsimile: +1 (847) 459-9515

TSUBAKIMOTO SINGAPORE PTE. LTD.
25 Gul Lane
Jurong, Singapore 629419
Phone: +65 6861 0422 / 3 / 4
Facsimile: +65 6861 7035

TAIWAN TSUBAKIMOTO CO.
No. 33, Lane 17, Zhiciang N. Rd.
Gueishan Township, Taoyuan County
Taiwan R.O.C.
Phone: +886 (33) 293827/8/9
Facsimile: +886 (33) 293065

TSUBAKI BRASIL EQUIPAMENTOS INDUSTRIAIS LTDA.
Rua Pamplona, 1018, C.J. 73/74
Jardim Paulista, CEP 01405-001
São Paulo, S.P., Brazil
Phone: +55 (11) 3253-5656
Facsimile: +55 (11) 3253-3384

TSUBAKIMOTO SINGAPORE PTE. LTD. INDIA LIAISON OFFICE
Chandrika Chambers No.4, 3rd Floor,
Anthony Street
Royapettah, Chennai, Tamil Nadu 600014,
India
Phone: +91 (44) 4231 5251
Facsimile: +91 (44) 4231 5253

TSUBAKIMOTO CHAIN TRADING (SHANGHAI) CO., LTD.
Room 1703, Aetna Tower, 107 Zunyi Rd.
Changning District, Shanghai 200051
People's Republic of China
Phone: +86 (021) 5396-6651/6652
Facsimile: +86 (021) 5396-6628

TSUBAKIMOTO EUROPE B.V.
Aventurijn 1200, 3316 LB Dordrecht
The Netherlands
Phone: +31 78 6204000
Facsimile: +31 78 6204001

TSUBAKIMOTO (THAILAND) CO., LTD.
999/9 The Offices at Centralworld
10th Floor, No. 1001, Rama 1 Road
Pathumwan, Bangkok 10330, Thailand
Phone: +66 (02) 264-5354 / 6
Facsimile: +66 (02) 251-3912

KOREA CONVEYOR IND. CO., LTD.
68B 7L, Namdong Industrial Estate, 627-3,
Gojan-dong, Namdong-gu, Incheon,
Republic of Korea
Phone: +82 (32) 817-0160
Facsimile: +82 (32) 819-9168

TSUBAKIMOTO U.K. LTD.
Osier Drive, Sherwood Park
Annesley, Nottingham
United Kingdom NG15 0DX
Phone: +44 1623 688 700
Facsimile: +44 1623 688 789

TSUBAKI AUSTRALIA PTY. LIMITED
Unit E, 95-101 Silverwater Road
Silverwater, N.S.W. 2128, Australia
Phone: +61 (02) 9704-2500
Facsimile: +61 (02) 9704-2550

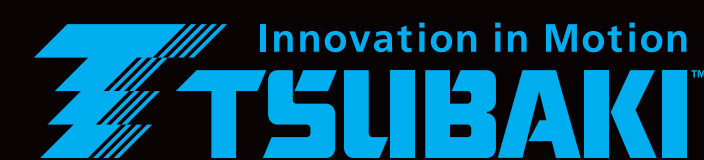
TSUBAKIMOTO CHAIN CO.

Headquarters
Nakanoshima Mitsui Building
3-3, Nakanoshima, Kita-ku,
Osaka 530-0005, Japan
Phone: +81 (06) 6441-0011
Facsimile: +81 (06) 6441-0489
Internet: <http://tsubakimoto.com/>

**Chain Division
Chain Sales Department**
1-3 Kannabidai 1-chome
Kyotanabe, Kyoto 610-0380, Japan
Phone: +81 (0774) 64-5023 / 4
Facsimile: +81 (0774) 64-5212



CANADIAN MANUFACTURING CAPABILITIES



Sprocket Options

- Bore Options – Plain, Finished, Bushing Style including Split Taper, QD and Taper Lock, Keyless Locking Device/Power Lock, Spline, Idler including bronze, bearing, plastic, hex bore, square bore
- Material – Carbon, Stainless, Alloy, Quench & Tempered (QT), Plastic
- Styles – Roller Chain & Engineered Class
- Value Added Options – Mud Relief, Wear indicator, Adjustable, Encoder mounting holes, encoder flags, Integrate separate components (sprocket-clutch), lubrication holes and grooves
- Construction Options – Split Segmental Rim



Timing Pulley Options

- Aluminum, Steel, Stainless
- Poly-Chain GT2™, HTD, Trapezoid
- Zinc Plating, Brass Pulley

*Poly-Chain GT2™ is trademark of the Gates Corporation.



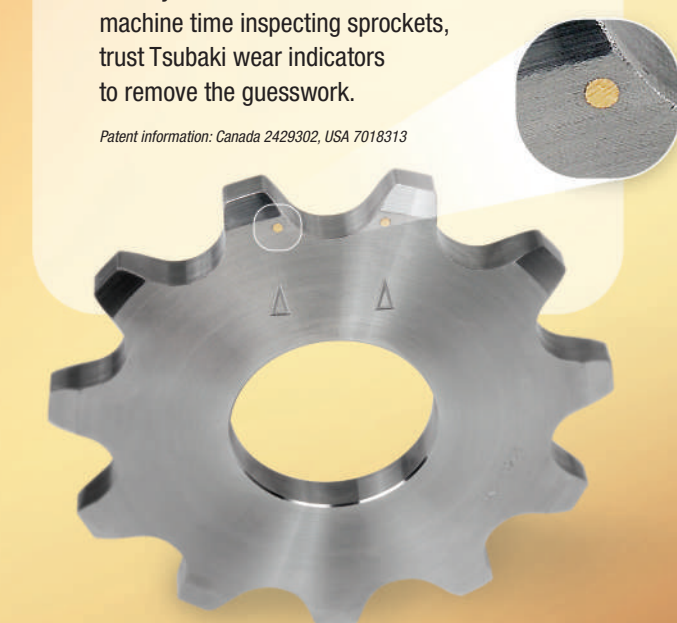
Complete Shaft Assembly

- Supply Kits

Wear Indicators

Sprocket wear is one of the leading causes of premature chain failure. When you can't waste valuable machine time inspecting sprockets, trust Tsubaki wear indicators to remove the guesswork.

Patent information: Canada 2429302, USA 7018313



Power Lock Range

- Up to 500mm bore

QUALITY at Tsubaki of Canada Limited

The right combination of Japanese discipline and Canadian expertise.

ダントツ **DANTOTSU**

These are the concepts we live:

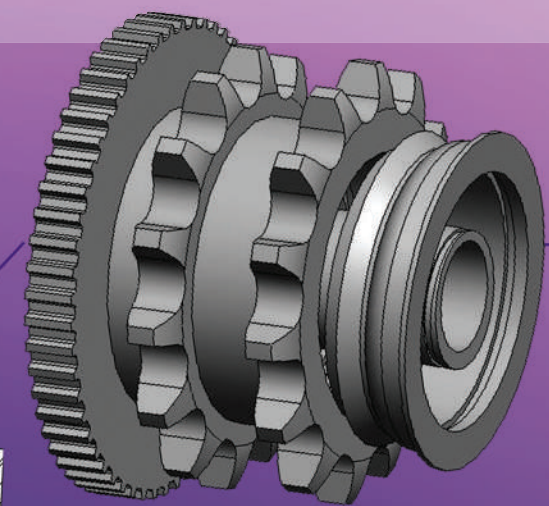
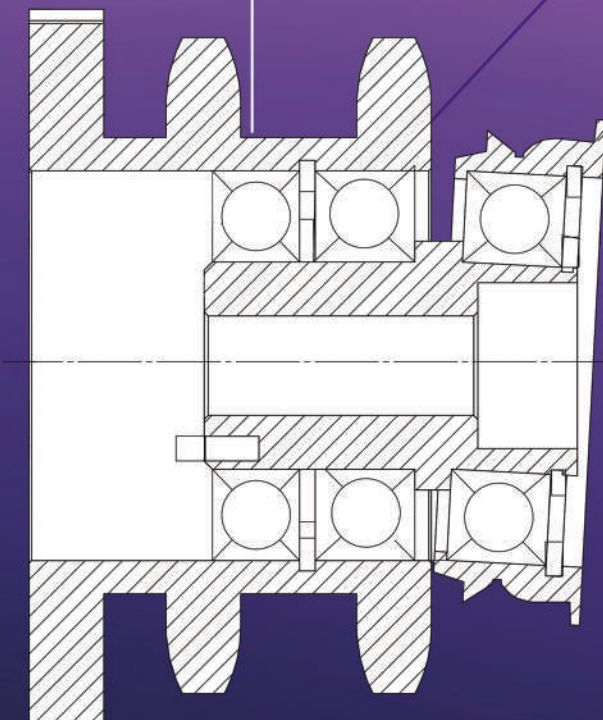
Dantotsu, a better than best mentality to produce the utmost in quality.

Kaizen, a total company involvement focusing on continuous workplace improvement.

5S, workplace management to improve safety, increase worker efficiency, and to achieve a sense of pride and ownership.

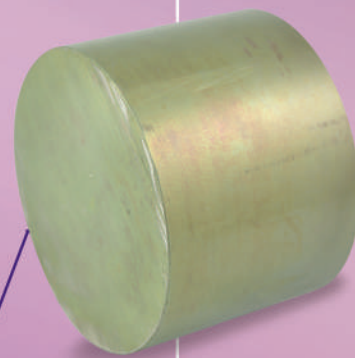
ISO, 9001 – 2008 registered.

Concept & Design



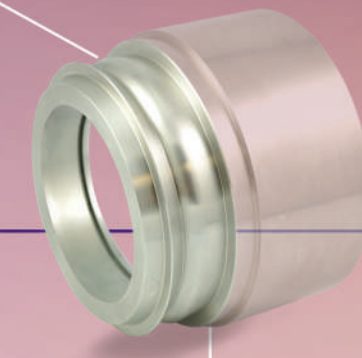
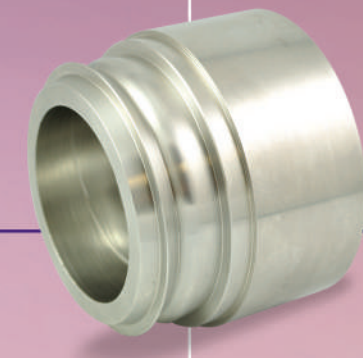
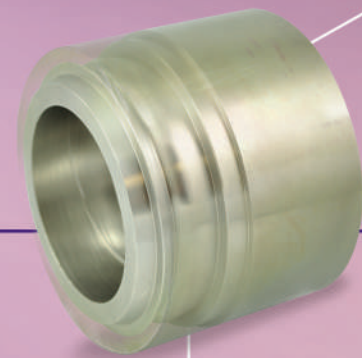
Raw Materials

Maximize material suitability



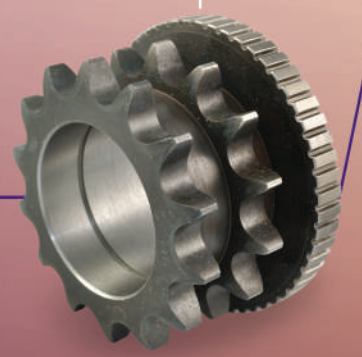
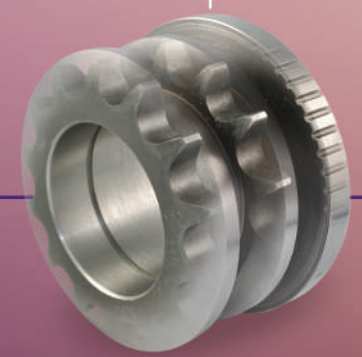
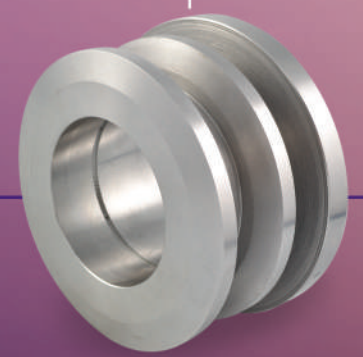
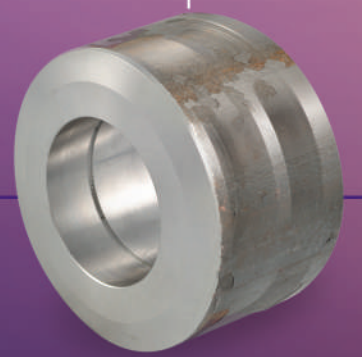
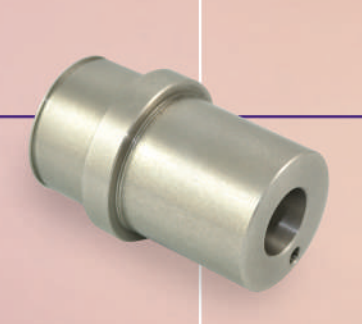
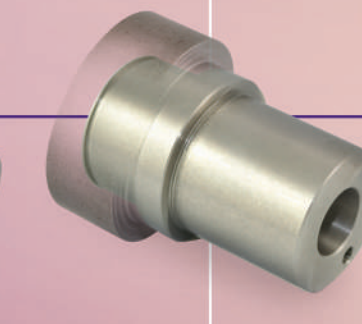
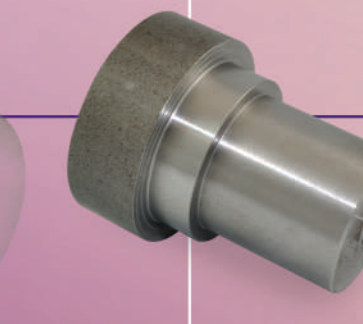
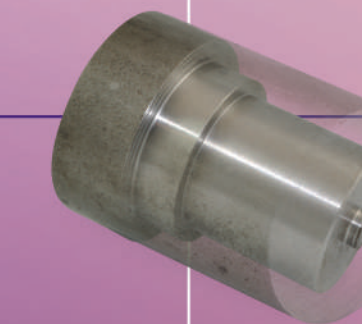
In Process

Precision & accuracy



Final Component

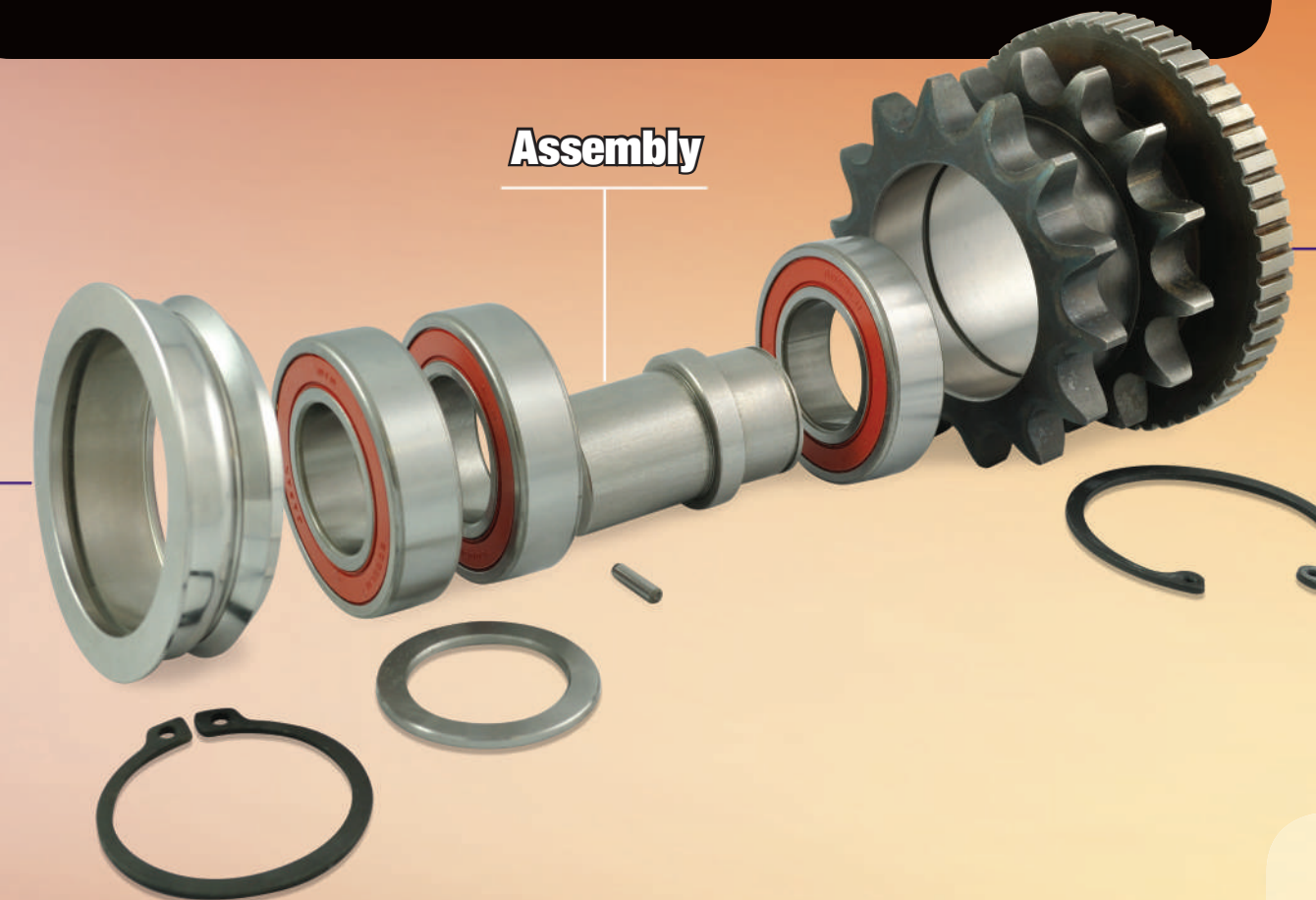
Quality & reliability



Tsubaki Precision Manufacturing

Seamless excellence from concept to market. Largest sprocket manufacturing facility in Canada.

Assembly



Final Product



Inventory Support

- Tsubaki will stock to suit your blanket order requirements
 - Draw inventory as your production requires
 - Peace of mind security: assurance that your inventory will be available when you need it
- Tap into Tsubaki's global supply chain network and resources

Reliability

- The assurance that your unique designs will be manufactured to order

Design

- Design from sample
- Design Studies – Mechanical property testing
- Prototype development
- Understands your need for unique and custom design
- 3D Modeling (SolidWorks) software. Can be integrated into your assembly drawing

Engineering Support

- Improvement to current design
 - Optimization of material selection
 - Value added additions
 - Review of geometry and profile to suit application requirement
- Engineering report using 3rd party analysis
- Reverse Engineering

