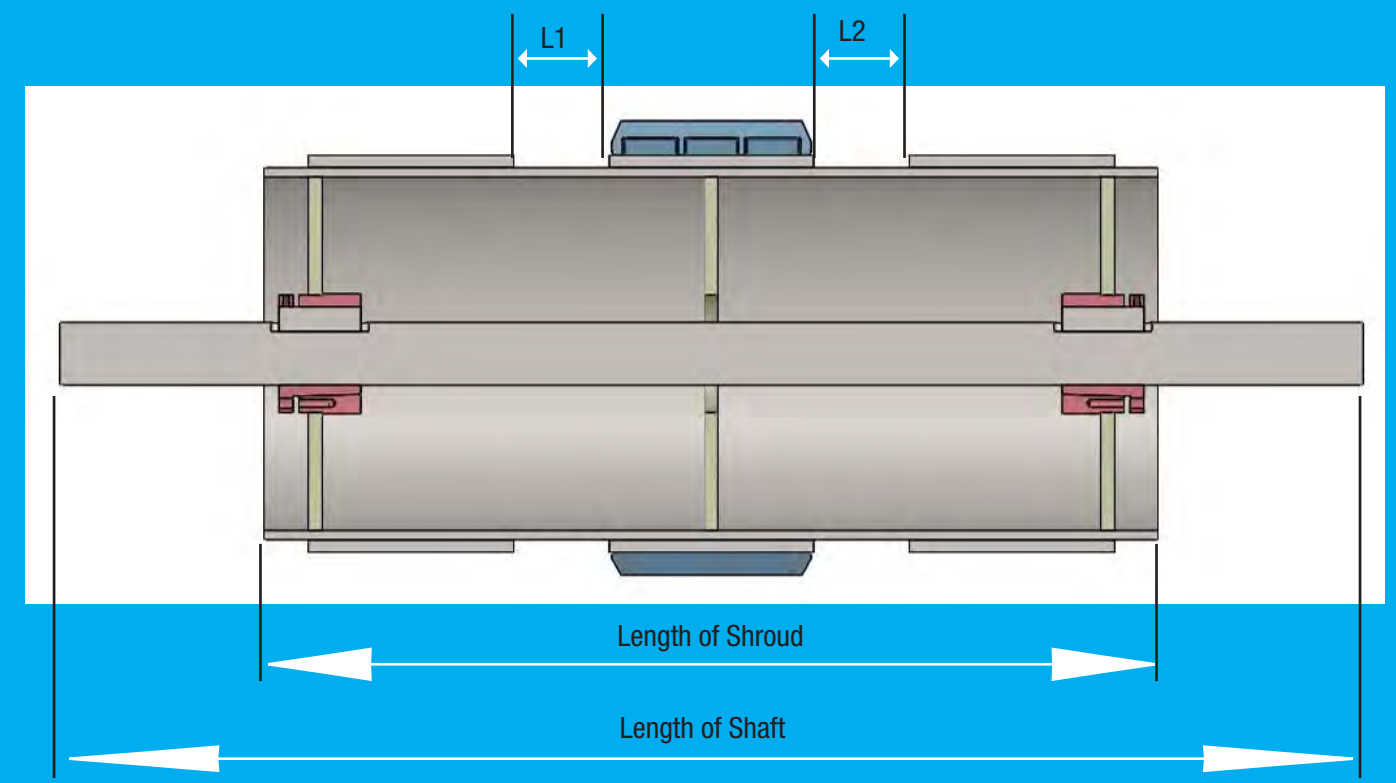


# Drum Sprocket Inquiry Sheet



Nomenclature / Part Number  
DR-480-1-10-A

DR	480	1	10	A
Drum Assembly	Chain Number	# of Strands	# of Teeth	A plate style, otherwise full face is standard
Quantity		Number of Strands		
Chain Size		Number of Hub Plates		
Number of Teeth		Number of Hubs		
Bore		Mounting Type		



	STRAND 1	STRAND 2	STRAND 3	STRAND 4	STRAND 5
Is it a Sprocket or Traction Wheel?					
# of Effective Teeth					
Length between Strands	NA	L1=	L2=	L3=	L4=
Length of Shroud			Length of Shaft		
Shaft Keyway Width			# of Keyways		
Flange Diameter			Flange Length		

Download PDF at [tsubaki.ca/library](http://tsubaki.ca/library) under Sprocket Documents  
Send inquiry to: [westerninsidesales@tsubaki.ca](mailto:westerninsidesales@tsubaki.ca) or [insidesales@tsubaki.ca](mailto:insidesales@tsubaki.ca)



**DIASAW MANUFACTURING LTD.**  
a member of the Tsubaki group  
  
9475 288 St. Maple Ridge, BC V2W 1L1  
Tel: (604) 462-7311  
(888) 462-4999  
Fax: (604) 462-7330  
Fax: Toll Free (888) 462-3866  
For sales inquiries:  
[westerninsidesales@tsubaki.ca](mailto:westerninsidesales@tsubaki.ca)



**Tsubaki of Canada Limited  
HEAD OFFICE & MANUFACTURING PLANT**  
  
1630 Drew Road Mississauga,  
Ontario, CANADA L5S 1J6  
Tel: (905) 676-0400  
(800) 263-7088  
After Hours Number: (905) 601-3043  
Fax: (905) 676-0904  
Email: [info@tsubaki.ca](mailto:info@tsubaki.ca)  
For sales inquiries:  
[insidesales@tsubaki.ca](mailto:insidesales@tsubaki.ca)



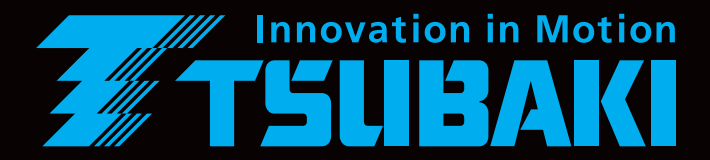
**EDMONTON OFFICE & WAREHOUSE**  
  
10035-56th Avenue  
Edmonton, AB T6E 5L7  
Tel: (780) 438-6073  
(800) 661-8811  
After Hours Number: (780) 983-2202  
Fax: (780) 436-4929  
Email: [info@tsubaki.ca](mailto:info@tsubaki.ca)  
For sales inquiries:  
[westerninsidesales@tsubaki.ca](mailto:westerninsidesales@tsubaki.ca)



**U.S. TSUBAKI POWER TRANSMISSION, LLC**  
  
301 E. Marquardt Drive  
Wheeling, IL 60090  
Tel: 800-323-7790  
Email: [sales@ustsubaki.com](mailto:sales@ustsubaki.com)

Note: In accordance with the policy of Tsubaki of Canada Limited to consistently improve its products, the specifications in this document are subject to change without notice. Please contact Tsubaki for current prices.

Copyright © 2018 Tsubaki of Canada Limited. Errors and Omissions Excepted.  
Disclaimer: Tsubaki of Canada Limited makes every effort to ensure that the information in this document is current and accurate, but cannot accept responsibility or liability for any loss or damage suffered as a result of information contained herein.



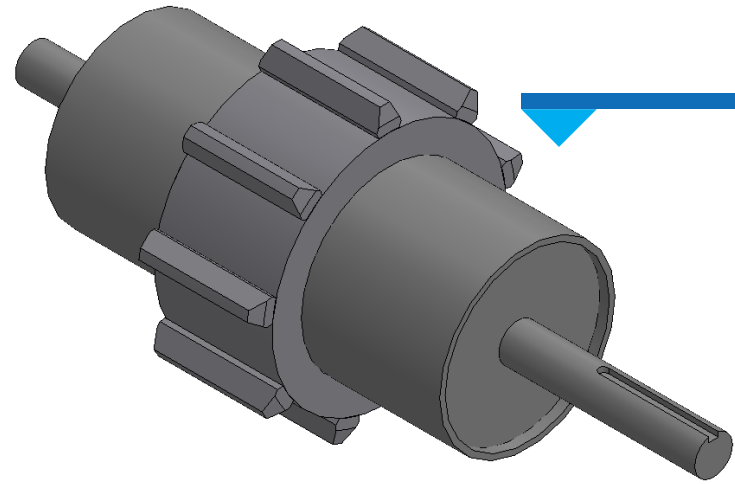
## Bulk Material Handling Assemblies



**SINGLE SOURCE FOR YOUR PREMIUM CHAIN AND SPROCKET NEEDS  
RELY ON YOUR TSUBAKI FIELD EXPERIENCE AND MANUFACTURING KNOWLEDGE  
COMPLETE SHAFT ASSEMBLY CAPABILITY  
MADE IN CANADA**

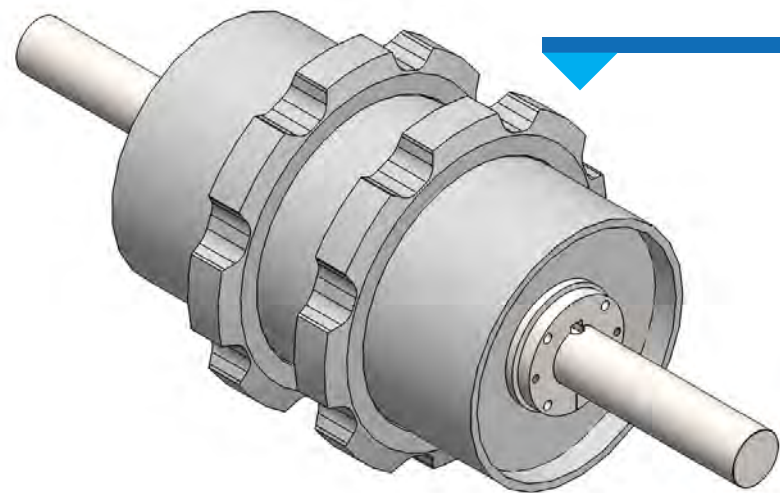


# Full-Face vs. A-Plate Drum Sprockets



## Full-Face Drum Sprocket

Increased surface area resulting in lower contact pressure between the sprocket and chain, greater wear ability make full face the standard for most applications.

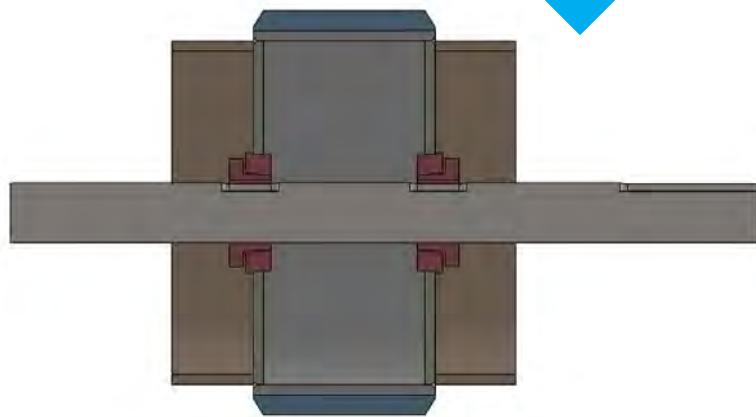


## A-Plate Drum Sprockets

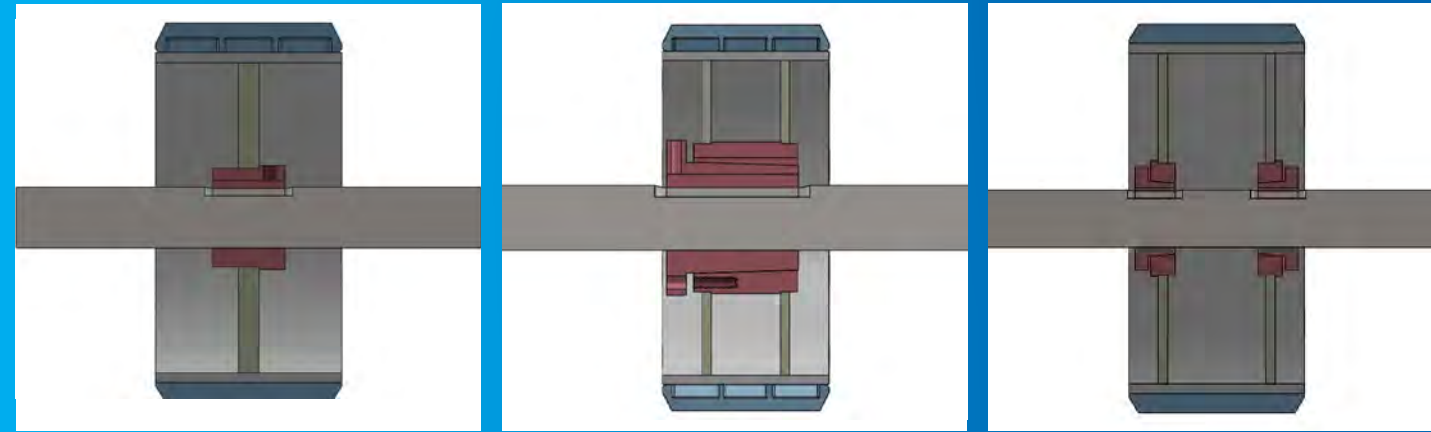
A-Plate style can handle greater misalignment and provide bulk material pass-through, however, less contact area may result in lower life.

## Optional Style with Flange

Flanges are different than an extended shroud even though they can both service the same purpose. A flange is separate piece that is welded to a plate.



# Hub Styles



Style 1

Style 2

Style 3

Style 1 for bores up to 3-15/16". Style 2 with double hub plates are required for bores greater than 4". Split Taper bushings are standard for single style hubs.

For ease of installation XTB type bushings are suggested for double hub construction

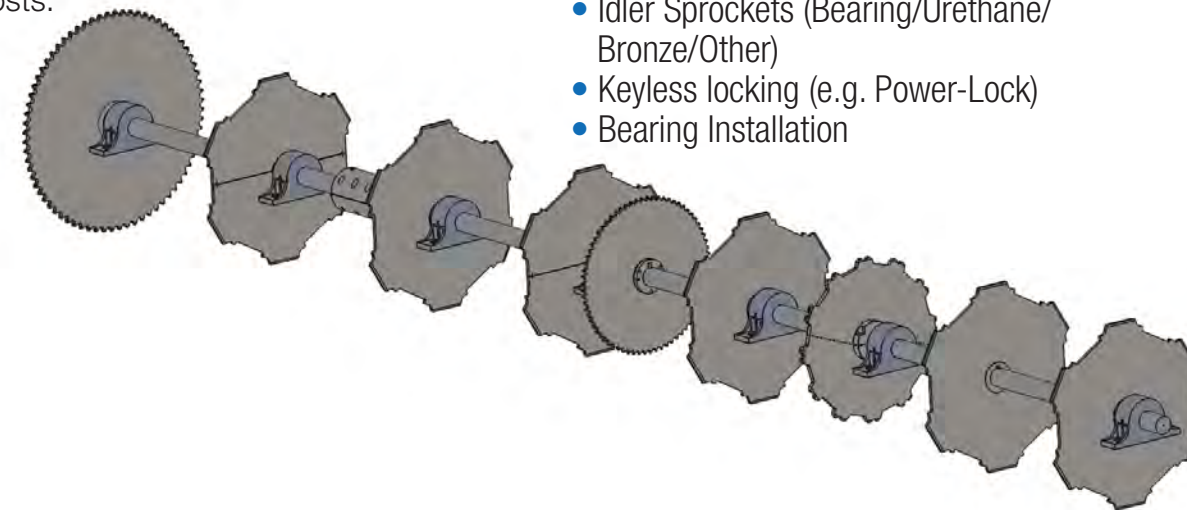
TYPE	BORE	BUSHING
Single	1-7/16" to 3-15/16"	S1
	4" to 4-15/16"	U1
	5" to 5-15/16"	W1
Multi	1-7/16" to 2-15/16"	XTB30
	3" to 3-7/16"	XTB35
	3-1/2" to 3-15/16"	XTB40
	4" to 4-7/16"	XTB45

## Shaft Assembly

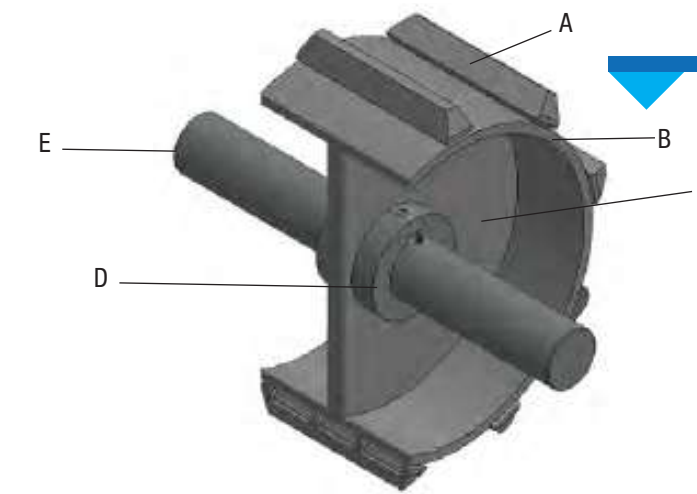
Replacing shrunk fit components can be costly. Complete shaft assemblies reduce installation costs. Split to bolt sprockets reduce future maintenance costs.

## Mounting Methods:

- Finished bore - Slip-Fit & Heat Shrunk
- Split-Taper, Taper-Lock & QD Bushing
- Split to Bolt
- Idler Sprockets (Bearing/Urethane/Bronze/Other)
- Keyless locking (e.g. Power-Lock)
- Bearing Installation

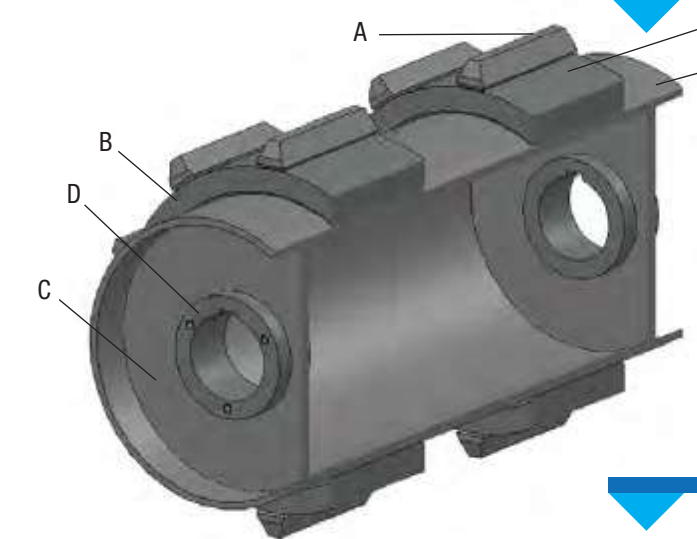


# Single, Double, Triple Construction



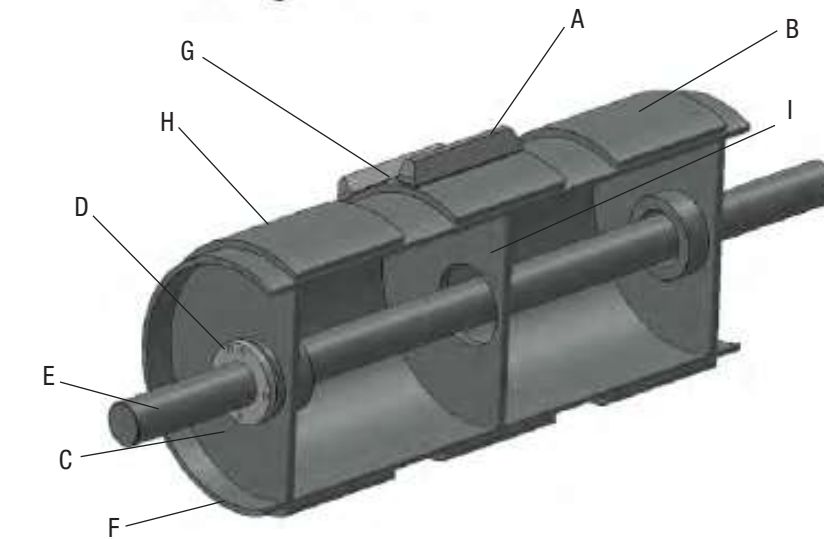
## Single Drum Sprocket

Teeth engage with the chain and provide positive traction. The Can is the main structural member of a drum assembly. Optionally a drum assembly may be supplied with no teeth to create a Traction Wheel or Idler.



## Double Drum Sprocket

To provide structural rigidity and strength, multiple-strand drums are supplied with a Shroud. Optionally multiple-strand drums may be supplied without a Shroud at customer request.



## Triple Strand, Combination Sprocket & Traction Wheel

On triple drum assemblies and greater, Support Plates are installed to provide additional structural strength.

A	Teeth
B	Can
C	Hub Plate
D	Hub
E	Shaft
F	Shroud
G	Sprocket
H	Traction Wheel
I	Support Plate