

ANSI

Large & Small Pitch Heavy, Super & Ultra Double Pitch Leaf

Attachment

Carbon Steel & Stainless Steel Hollow Pin LAMBDA® Xceeder® (Felt Seal)

Corrosion Resistant

Super Stainless Steel Stainless Steel Nickel-Plated Neptune®

Plastic

Industrial Plastic Poly Steel

Specialty

British Standard Energy Series® (Oil & Gas) Thermoformer Vacuum Wrapper & Gripper

Pin Oven Titan™ Free-Flow Made-to-Order

Drive

Straight Sidebars & Offset Sidebars

Roller Conveyor

Roller Conveyors

Extended Pins & High Sidebars

Extended Pins & High Sidebars

A and K Attachments

A and K Attachments

G Attachments

G Attachments

M Attachments

M Attachments

Apron Conveyor

Apron Conveyor

Style A and B

Style A and B

Bar & Pin

Bar & Pin

Linear Fixed & Double Flex

Welded Steel

Welded Steel

Steel Bushed

Steel Bushed

Bucket Elevator

Bucket Elevator

Sealed

Patented Sealed Joint

Drop Forged Rivetless

Drop Forged Rivetless

Barloop

Barloop

Caterpillar Drive

Caterpillar Drive

Specialty

Bi-Planar

Flanged Rollers and Cottered Pins

Flanged Rollers and Cottered Pins

Forged Continuous & Straight Pull Miner

Forged Continuous & Straight Pull Miner

Outboard Roller

Outboard Roller

Water Screen

Water Screen

Roller Chain Stainless Steel Engineering Class Made-To-Order

Double Single Double Pitch Multi-Strand Idler

Split Taper Steel Split Double Plus® SMART TOOTH™ with patented Wear Indicators

Overrunning Clutches & Backstops

Overrunning Clutches & Backstops

Power Cylinder (Electric Actuator)

Power Cylinder (Electric Actuator)

POWER-LOCK®

POWER-LOCK®

Couplings

Couplings

Gear Motor

Gear Motor

Shock Relay/Overload Protection

Shock Relay/Overload Protection

Torque Shield & Torque Limiter

Torque Shield & Torque Limiter

Linear Shield

Linear Shield

MONO - Molded Plastic

Micro-Sized EASYTRAX QUICKTRAX UNIFLEX Advanced

VARIO - Customizable Basic, Modular & Hybrid

K Series MC Series MK Series XL Series

Tube - Enclosed

TKA Series MT Series S Series CONDUFLEX

Steel - Heavy Duty

LS Series S/SX Series Super-Duty RCC - Rolling Carriage

3D Motion

ROBOTRAX

Turn-Key

Turn-Key

Cables

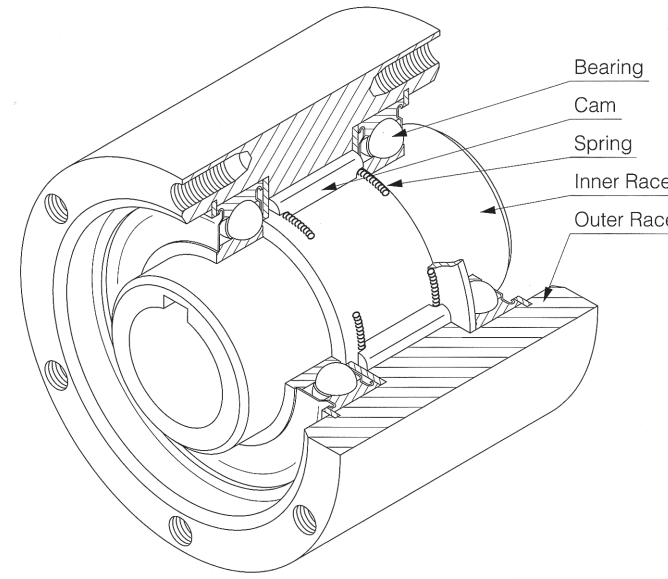
Continuous-Flex

Accessories

Guide Channels

Tsubaki now offers an extensive inventory of Over-running and Indexing Clutches and Backstops

Tsubaki is bringing over 50 years of global experience in the design and manufacture of clutch products to North America. The product variations shown below feature a series of unique cam designs to maximize the torque rating, achieve low speed lift-off to minimize wear in the overrunning condition and provide long maintenance free service. Simple and cost effective, Tsubaki clutches transmit the load in one direction (freewheel) and stop and hold any reversing loads to prevent damage.



Backstopping



BS/BS-HS



BSEU



BR-HT



BREU

High Speed Backstopping

Long-Life Modular Design

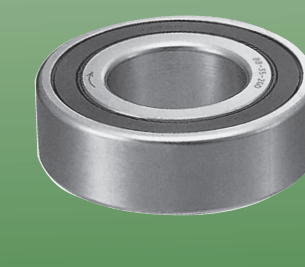
Indexing



MIUS



MZEU



BB

One-Way Bearing

For more information on our clutch product offerings, pricing or to request a catalog, please contact us: **800-263-7088** or visit www.tsubaki.ca

Unmatched Quality, Dependability, Service & Support

SMART TOOTH™ Sprockets

Sealed Joint Chain Options

Steel Cable Carriers

Backstops & Overrunning Clutches

Lube-Free Lambda® Chain

Continuous-Flex Cables

Here are just some of Tsubaki's Premium Problem Solving Products

TSUBAKI OF CANADA LIMITED



Contact Information

Tsubaki of Canada Limited
 Head Office & Manufacturing Plant
 1630 Drew Road
 Mississauga, ON
 L5S 1J6
 Tel: (800) 263-7088
 Fax: (905) 676-0904
www.tsubaki.ca
 Email: insidesales@tsubaki.ca

Edmonton Office & Manufacturing Plant
 10035 - 56th Avenue
 Edmonton, AB
 T6E 5L7
 Tel: (800) 661-8811
 Fax: (780) 436-4929
www.tsubaki.ca
 Email: westerninsidesales@tsubaki.ca

Maple Ridge Office & Manufacturing Plant
 9475 288 St.
 Maple Ridge, BC
 V2W 1L1
 Tel: (604) 462-7311
 Fax: (604) 462-7330
www.tsubaki.ca
 Email: westerninsidesales@tsubaki.ca

©2016 Tsubaki of Canada Limited.
 All Rights Reserved. Printed in Canada
 04/19 Rev. 3 L11000



PRODUCT GUIDE



www.tsubaki.ca