

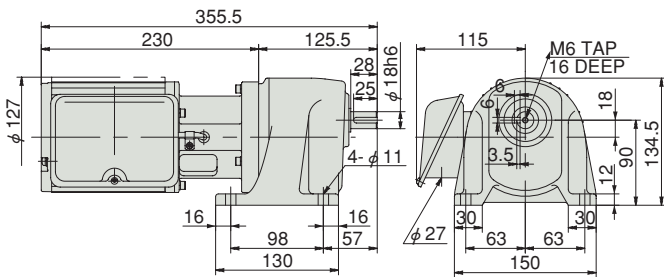
CB Gear Motor Outline Dimensions

Three-phase 0.1 kW · L : Foot mount type / U : Face mount type

GEAR MOTOR TA Series

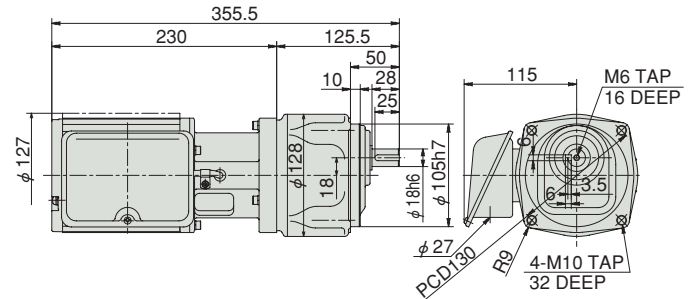
C-11 0.1kW GMTA010-18L5CB

Reduction ratio : 5	Approx. weight : 9.1kg
Reference page : Specification Chart→P106	



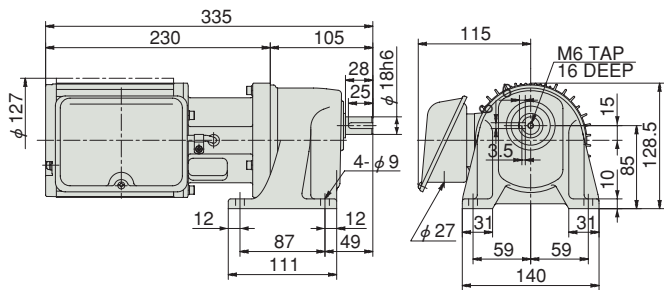
C-15 0.1kW GMTA010-18U5CB

Reduction ratio : 5	Approx. weight : 9.1kg
Reference page : Specification Chart→P106 Options→P57	



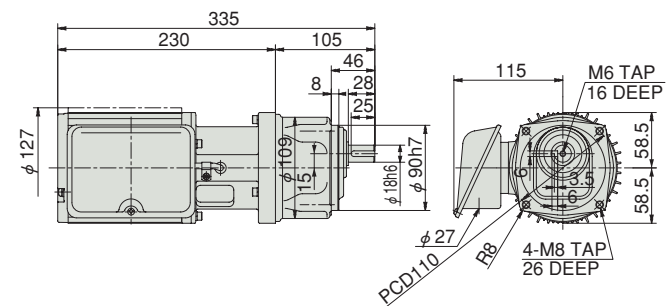
C-12 0.1kW GMTA010-18L10~25CB

Reduction ratio : 10, 15, 20, 25	Approx. weight : 7.9kg
Reference page : Specification Chart→P106	



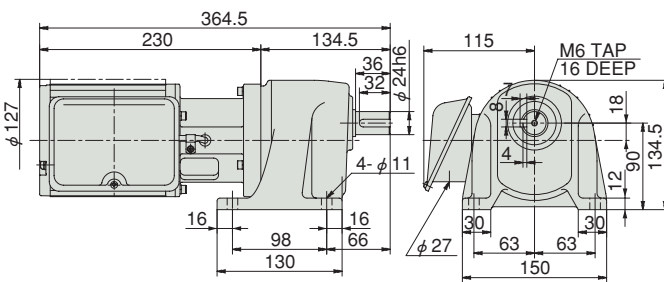
C-16 0.1kW GMTA010-18U10~25CB

Reduction ratio : 10, 15, 20, 25	Approx. weight : 7.7kg
Reference page : Specification Chart→P106 Options→P57	



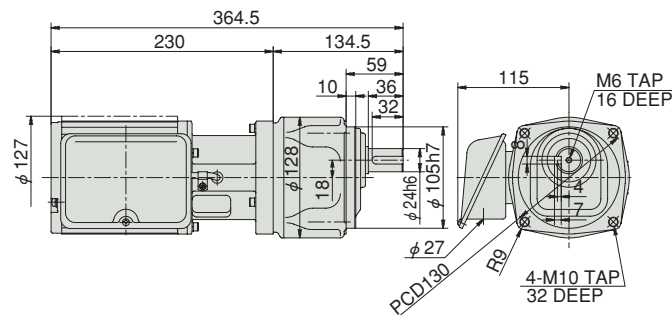
C-13 0.1kW GMTA010-24L30~75CB

Reduction ratio : 30, 40, 50, 60, 75	Approx. weight : 9.3kg
Reference page : Specification Chart→P106	



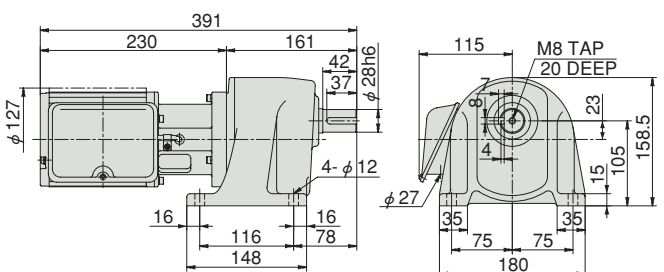
C-17 0.1kW GMTA010-24U30~75CB

Reduction ratio : 30, 40, 50, 60, 75	Approx. weight : 9.10kg
Reference page : Specification Chart→P106 Options→P57	



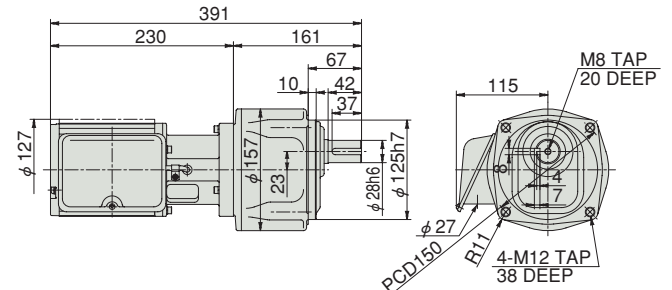
C-14 0.1kW GMTA010-28L100~200CB

Reduction ratio : 100, 120, 165, 200	Approx. weight : 11.7kg
Reference page : Specification Chart→P106	



C-18 0.1kW GMTA010-28U100~200CB

Reduction ratio : 100, 120, 165, 200	Approx. weight : 11.5kg
Reference page : Specification Chart→P106 Options→P57	



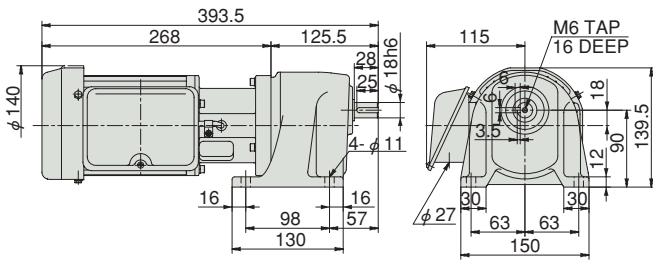
CB Gear Motor Outline Dimensions

Three-phase 0.2 kW · L : Foot mount type / U : Face mount type

GEAR MOTOR TA Series

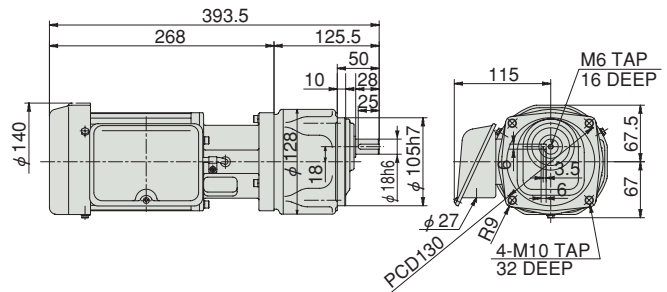
C-19 0.2kW GMTA020-18L5CB

Reduction ratio : 5 Approx. weight : 9.0kg
Reference page : Specification Chart→P106



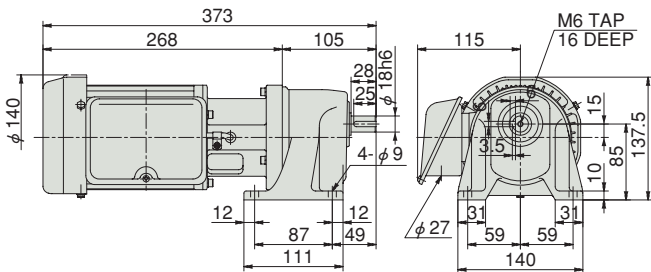
C-23 0.2kW GMTA020-18U5CB

Reduction ratio : 5 Approx. weight : 9.0kg
Reference page : Specification Chart→P106 Options→P57



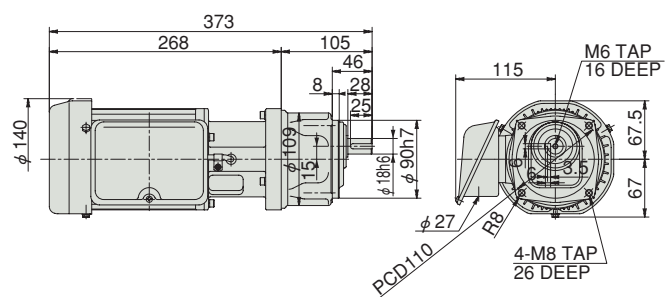
C-20 0.2kW GMTA020-18L10~25CB

Reduction ratio : 10, 15, 20, 25 Approx. weight : 7.8kg
Reference page : Specification Chart→P106



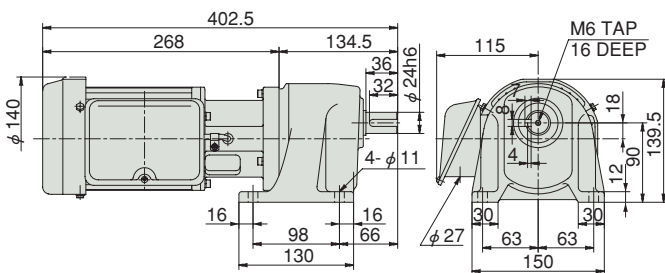
C-24 0.2kW GMTA020-18U10~25CB

Reduction ratio : 10, 15, 20, 25 Approx. weight : 7.6kg
Reference page : Specification Chart→P106 Options→P57



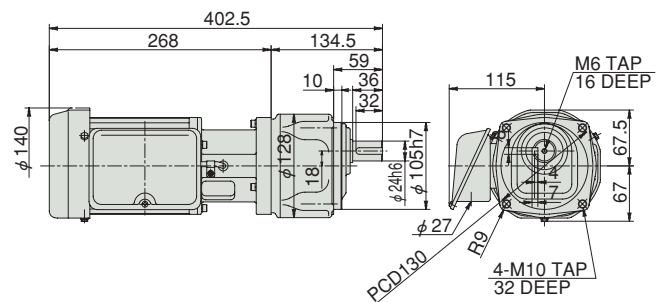
C-21 0.2kW GMTA020-24L30~75CB

Reduction ratio : 30, 40, 50, 60, 75 Approx. weight : 9.2kg
Reference page : Specification Chart→P106



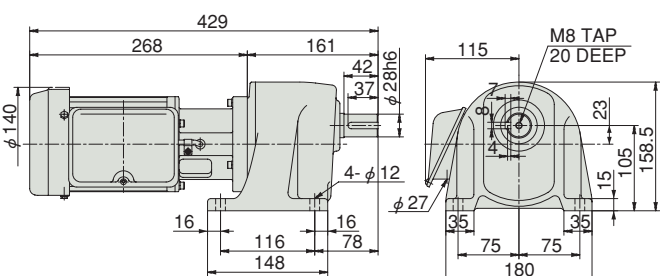
C-25 0.2kW GMTA020-24U30~75CB

Reduction ratio : 30, 40, 50, 60, 75 Approx. weight : 9.0kg
Reference page : Specification Chart→P106 Options→P57



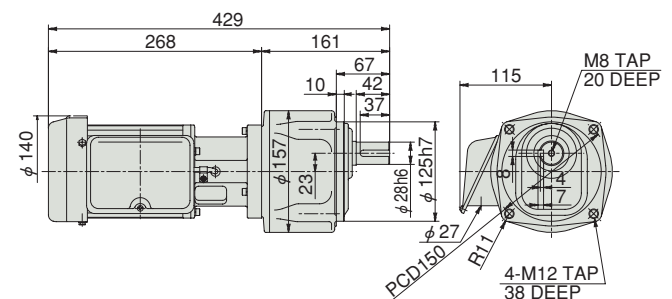
C-22 0.2kW GMTA020-28L100~200CB

Reduction ratio 100, 120, 165, 200 Approx. weight : 11.6kg
Reference page : Specification Chart→P106



C-26 0.2kW GMTA020-28U100~200CB

Reduction ratio : 100, 120, 165, 200 Approx. weight : 11.4kg
Reference page : Specification Chart→P106 Options→P57



Outline Dimensions

L.U
C-19
C-20
C-21
C-22
C-23
C-24
C-25
C-26

0.2

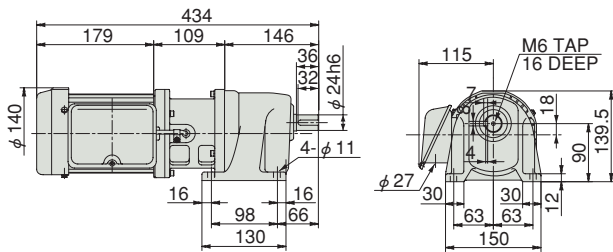
CB Gear Motor Outline Dimensions

Three-phase 0.4 kW · L : Foot mount type / U : Face mount type

GEAR MOTOR TA Series

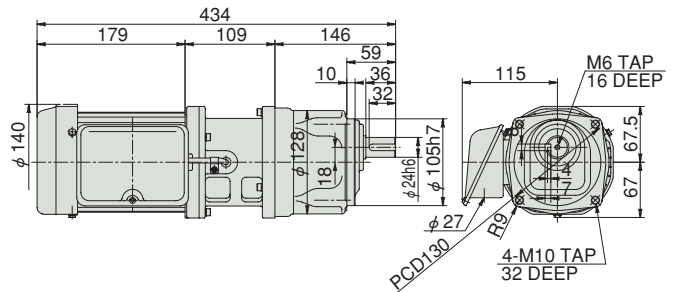
C-27 0.4kW GMTA040-24L5~25CB

Reduction ratio : 5, 10, 15, 20, 25 Approx. weight : 12.0kg
Reference page : Specification Chart→P106



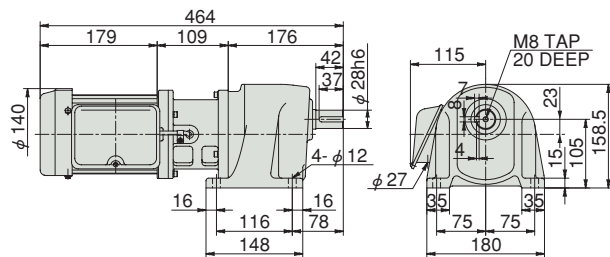
C-30 0.4kW GMTA040-24U5~25CB

Reduction ratio : 5, 10, 15, 20, 25 Approx. weight : 9.8kg
Reference page : Specification Chart→P106 Options→P57



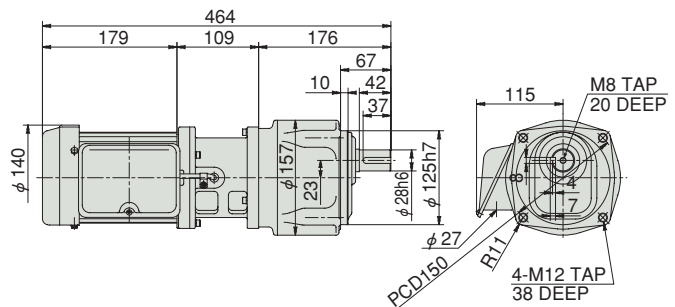
C-28 0.4kW GMTA040-28L30~75CB

Reduction ratio : 30, 40, 50, 60, 75 Approx. weight : 12.5kg
Reference page : Specification Chart→P106



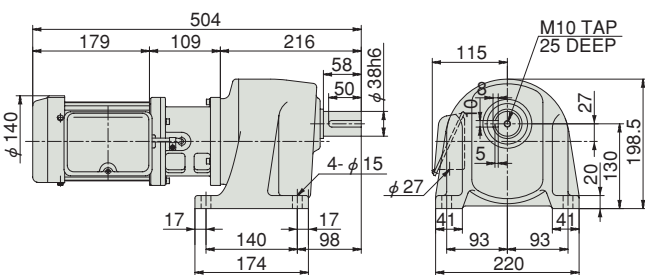
C-31 0.4kW GMTA040-28U30~75CB

Reduction ratio : 30, 40, 50, 60, 75 Approx. weight : 12.5kg
Reference page : Specification Chart→P106 Options→P57



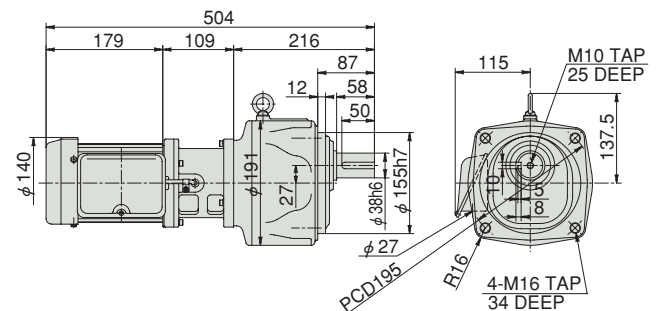
C-29 0.4kW GMTA040-38L100~200CB

Reduction ratio : 100, 120, 165, 200 Approx. weight : 16.5kg
Reference page : Specification Chart→P106



C-32 0.4kW GMTA040-38U100~200CB

Reduction ratio : 100, 120, 165, 200 Approx. weight : 22.5kg
Reference page : Specification Chart→P106 Options→P58



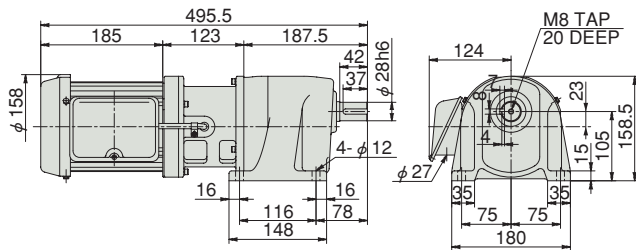
CB Gear Motor Outline Dimensions

Three-phase 0.75 kW · L : Foot mount type / U : Face mount type / F : Flange mount type

GEAR MOTOR TA Series

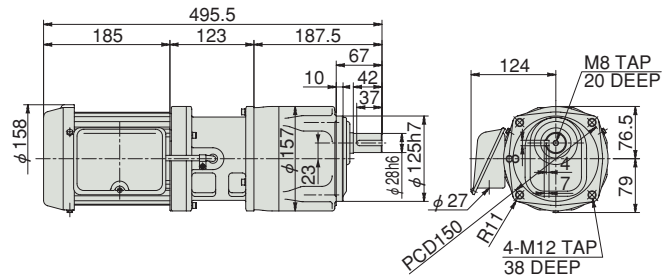
C-33 0.75kW GMTA075-28L5~25CB

Reduction ratio : 5, 10, 15, 20, 25	Approx. weight : 16.8kg
Reference page : Specification Chart→P107	



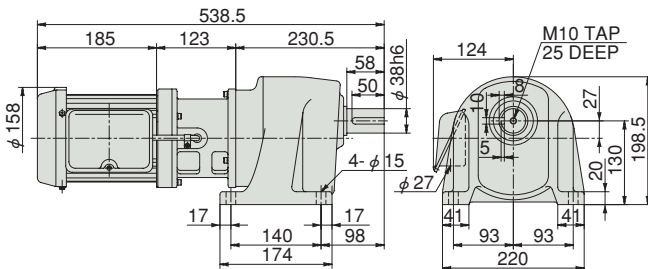
C-36 0.75kW GMTA075-28U5~25CB

Reduction ratio : 5, 10, 15, 20, 25	Approx. weight : 16.8kg
Reference page : Specification Chart→P107 Options→P57	



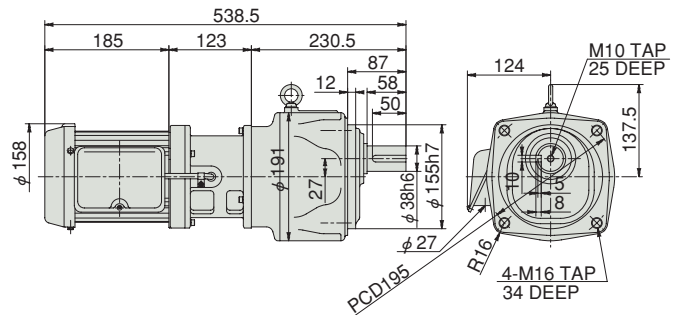
C-34 0.75kW GMTA075-38L30~75CB

Reduction ratio : 30, 40, 50, 60, 75	Approx. weight : 20.8kg
Reference page : Specification Chart→P107	



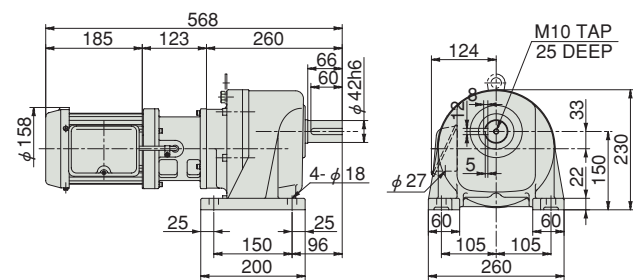
C-37 0.75kW GMTA075-38U30~75CB

Reduction ratio : 30, 40, 50, 60, 75	Approx. weight : 26.8kg
Reference page : Specification Chart→P107 Options→P58	



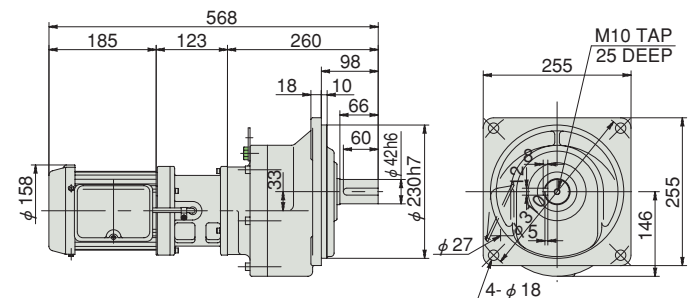
C-35 0.75kW GMTA075-42L100~200CB

Reduction ratio : 100, 120, 165, 200	Approx. weight : 42.3kg
Reference page : Specification Chart→P107	



C-38 0.75kW GMTA075-42F100~200CB

Reduction ratio : 100, 120, 165, 200	Approx. weight : 44.3kg
Reference page : Specification Chart→P107	



Outline Dimensions

L.U.F
C-33
C-34
C-35
C-36
C-37
C-38

0.75

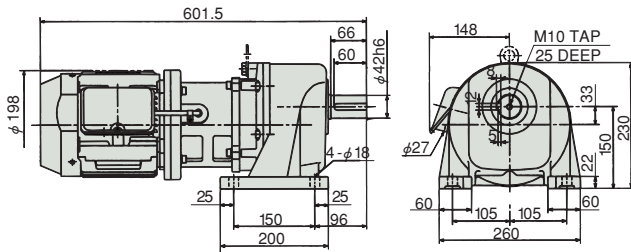
CB Gear Motor Outline Dimensions

Three-phase 1.5 kW · L : Foot mount type / F : Flange mount type

GEAR MOTOR TA Series

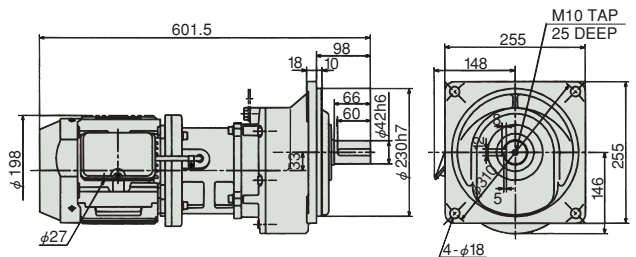
C-39 1.5kW GMTA150-42L5~30CB

Reduction ratio : 5, 10, 15, 20, 25, 30 Approx. weight : 56.0kg
Reference page : Specification Chart→P107



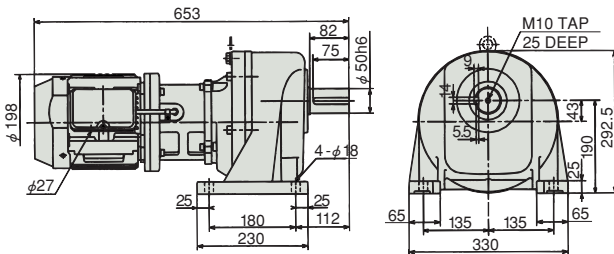
C-42 1.5kW GMTA150-42F5~30CB

Reduction ratio : 5, 10, 15, 20, 25, 30 Approx. weight : 63.0kg
Reference page : Specification Chart→P107



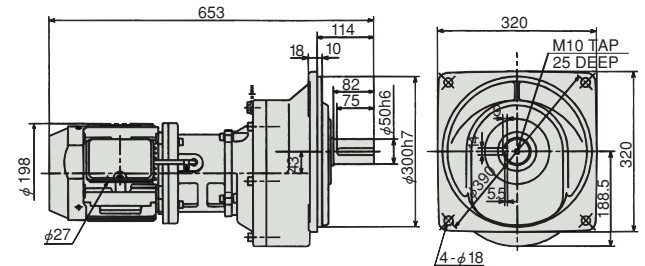
C-40 1.5kW GMTA150-50L40~75CB

Reduction ratio : 40, 50, 60, 75 Approx. weight : 77.0kg
Reference page : Specification Chart→P107



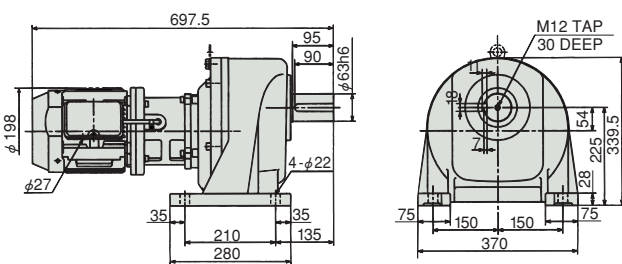
C-43 1.5kW GMTA150-50F40~75CB

Reduction ratio : 40, 50, 60, 75 Approx. weight : 78.0kg
Reference page : Specification Chart→P107



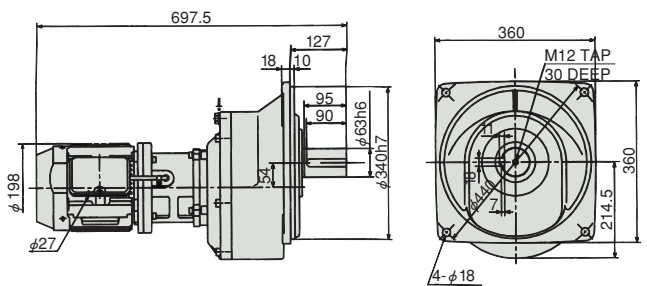
C-41 1.5kW GMTA150-63L100~200CB

Reduction ratio : 100, 120, 165, 200 Approx. weight : 108.0kg
Reference page : Specification Chart→P107



C-44 1.5kW GMTA150-63F100~200CB

Reduction ratio : 100, 120, 165, 200 Approx. weight : 112.0kg
Reference page : Specification Chart→P107



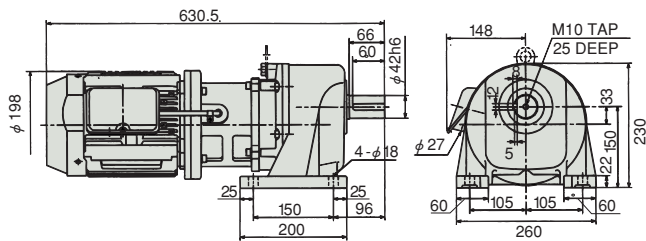
CB Gear Motor Outline Dimensions

Three-phase 2.2 kW · L : Foot mount type / F : Flange mount type

GEAR MOTOR TA Series

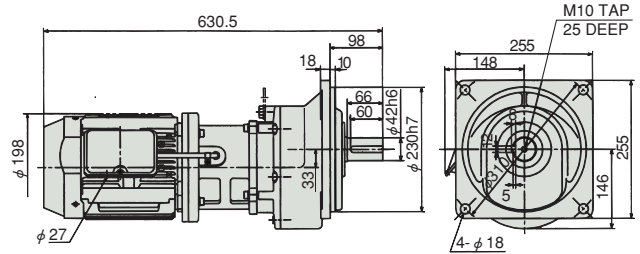
C-45 2.2kW GMTA220-42L5~30CB

Reduction ratio : 5, 10, 15, 20, 25, 30	Approx. weight : 59.0kg
Reference page : Specification Chart→P107	



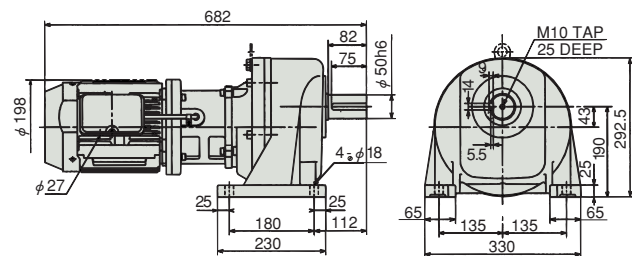
C-48 2.2kW GMTA220-42F5~30CB

Reduction ratio : 5, 10, 15, 20, 25, 30	Approx. weight : 61.0kg
Reference page : Specification Chart→P107	



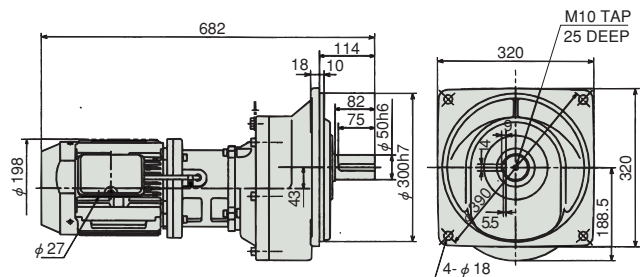
C-46 2.2kW GMTA220-50L40~75CB

Reduction ratio : 40, 50, 60, 75	Approx. weight : 80.0kg
Reference page : Specification Chart→P107	



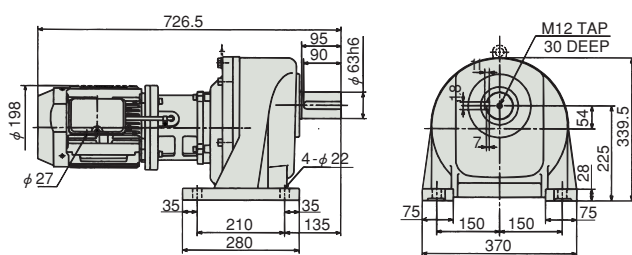
C-49 2.2kW GMTA220-50F40~75CB

Reduction ratio : 40, 50, 60, 75	Approx. weight : 83.0kg
Reference page : Specification Chart→P107	



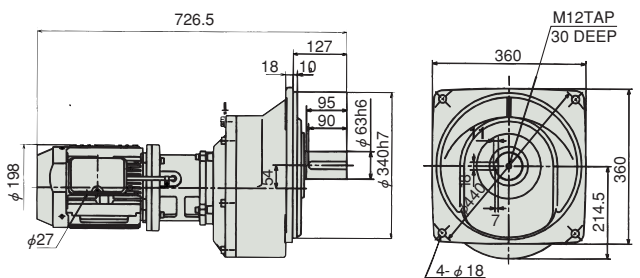
C-47 2.2kW GMTA220-63L100~200CB

Reduction ratio : 100, 120, 165, 200	Approx. weight : 111.0kg
Reference page : Specification Chart→P107	



C-50 2.2kW GMTA220-63F100~200CB

Reduction ratio : 100, 120, 165, 200	Approx. weight : 115.0kg
Reference page : Specification Chart→P107	



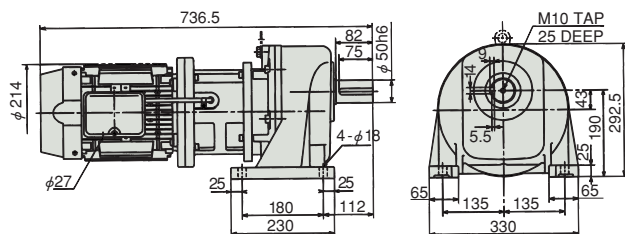
CB Gear Motor Outline Dimensions

Three-phase 3.7 kW · L : Foot mount type / F : Flange mount type

GEAR MOTOR TA Series

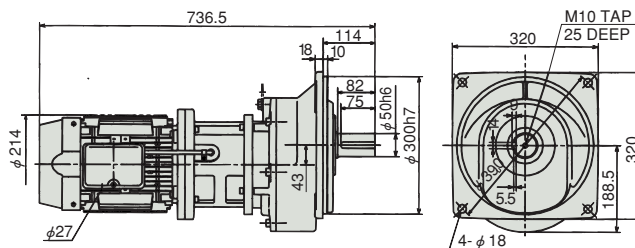
C-51 3.7kW GMTA370-50L5~30CB

Reduction ratio : 5, 10, 15, 20, 25, 30 Approx. weight : 92.0kg
Reference page : Specification Chart→P107



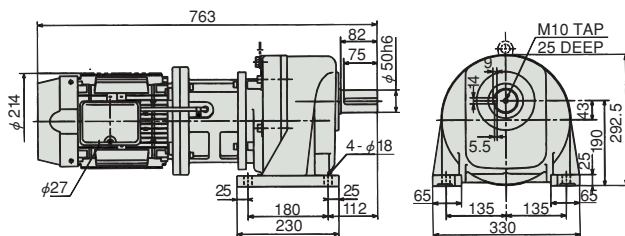
C-53 3.7kW GMTA370-50F5~30CB

Reduction ratio : 5, 10, 15, 20, 25, 30 Approx. weight : 94.0kg
Reference page : Specification Chart→P107



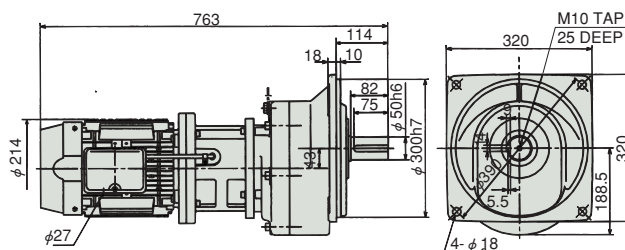
C-52 3.7kW GMTA370-50L40~50CB

Reduction ratio : 40, 50 Approx. weight : 96.0kg
Reference page : Specification Chart→P107



C-54 3.7kW GMTA370-50F40~50CB

Reduction ratio : 40, 50 Approx. weight : 98.0kg
Reference page : Specification Chart→P107



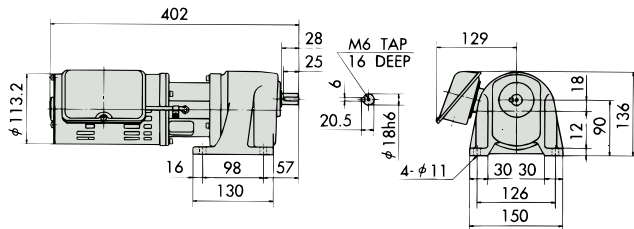
CB Gear Motor Outline Dimensions

Single-phase 100 W · L : Foot mount type / U : Face mount type

GEAR MOTOR TA Series

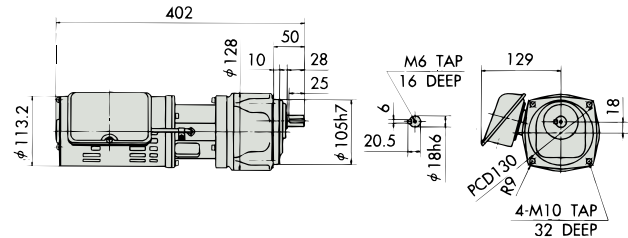
C-55 100W GMTA100-18L5CB

Reduction ratio : 5	Approx. weight : 9.9kg
Reference page : Specification Chart→P106	



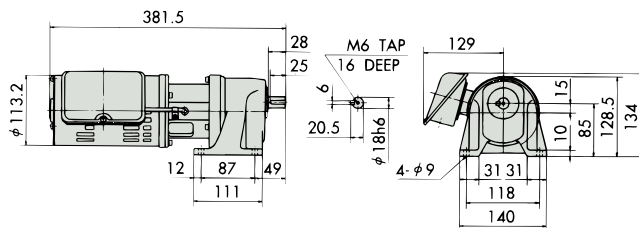
C-59 100W GMTA100-18U5CB

Reduction ratio : 5	Approx. weight : 9.9kg
Reference page : Specification Chart→P106 Options→P57	



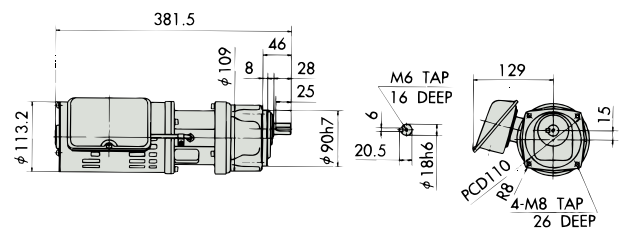
C-56 100W GMTA100-18L10~25CB

Reduction ratio : 10, 15, 20, 25	Approx. weight : 8.7kg
Reference page : Specification Chart→P106	



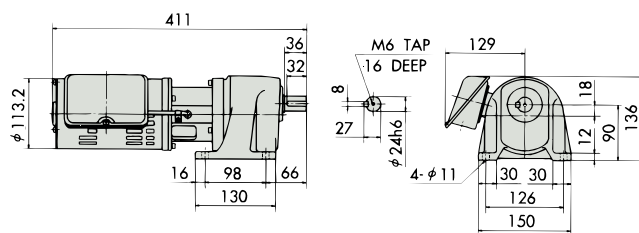
C-60 100W GMTA100-18U10~25CB

Reduction ratio : 10, 15, 20, 25	Approx. weight : 8.5kg
Reference page : Specification Chart→P106 Options→P57	



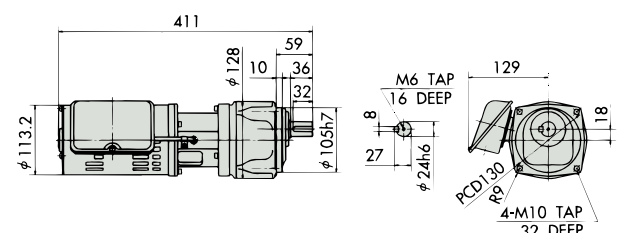
C-57 100W GMTA100-24L30~75CB

Reduction ratio : 30, 40, 50, 60, 75	Approx. weight : 10.1kg
Reference page : Specification Chart→P106	



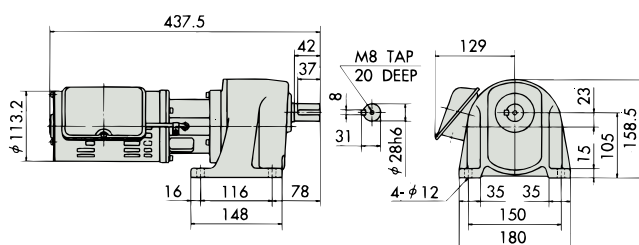
C-61 100W GMTA100-24U30~75CB

Reduction ratio : 30, 40, 50, 60, 75	Approx. weight : 9.9kg
Reference page : Specification Chart→P106 Options→P57	



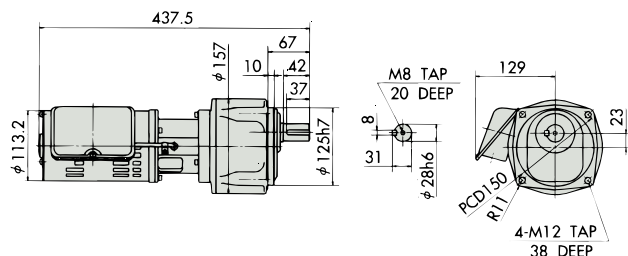
C-58 100W GMTA100-28L100~200CB

Reduction ratio : 100, 120, 165, 200	Approx. weight : 12.5kg
Reference page : Specification Chart→P106	



C-62 100W GMTA100-28U100~200CB

Reduction ratio : 100, 120, 165, 200	Approx. weight : 12.3kg
Reference page : Specification Chart→P106 Options→P57	



Outline Dimensions

L.U

C-55
C-56
C-57
C-58
C-59
C-60
C-61
C-62

100

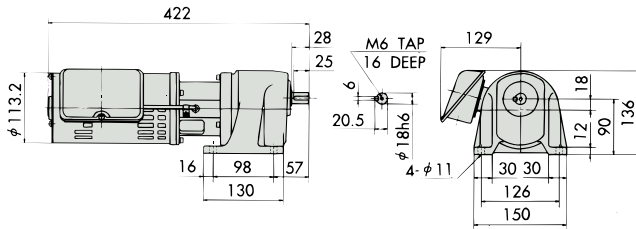
CB Gear Motor Outline Dimensions

Single-phase 200 W · L : Foot mount type / U : Face mount type

GEAR MOTOR TA Series

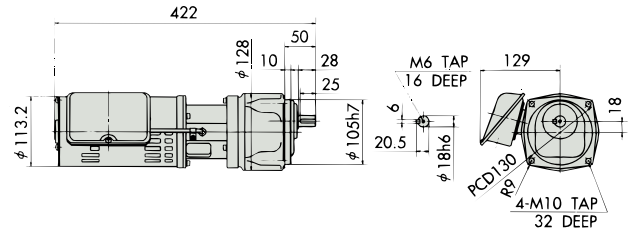
C-63 200W GMTA200-18L5CB

Reduction ratio : 5	Approx. weight : 11.3kg
Reference page : Specification Chart→P106	



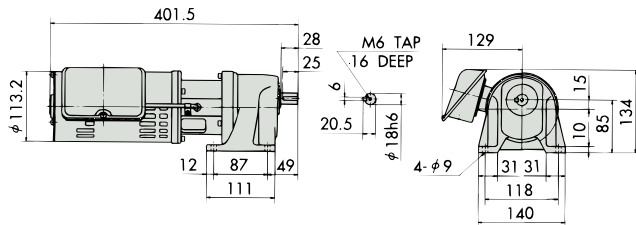
C-67 200W GMTA200-18U5CB

Reduction ratio : 5	Approx. weight : 11.3kg
Reference page : Specification Chart→P106 Options→P57	



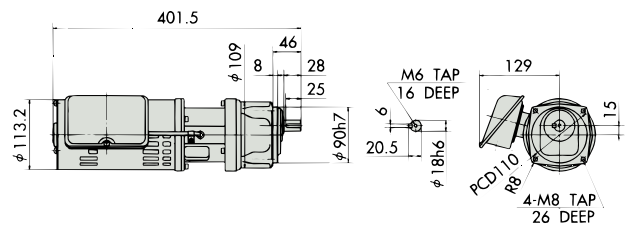
C-64 200W GMTA200-18L10~25CB

Reduction ratio : 10, 15, 20, 25	Approx. weight : 10.1kg
Reference page : Specification Chart→P106	



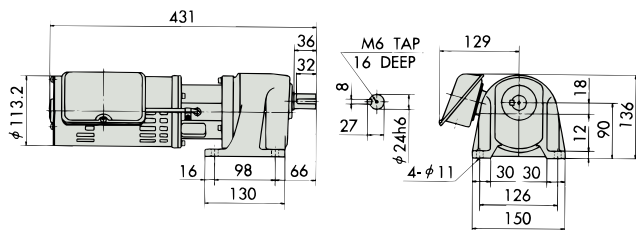
C-68 200W GMTA200-18U10~25CB

Reduction ratio : 10, 15, 20, 25	Approx. weight : 9.9kg
Reference page : Specification Chart→P106 Options→P57	



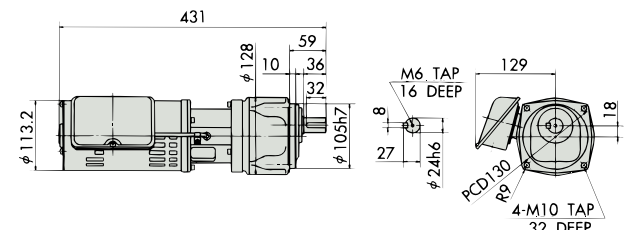
C-65 200W GMTA200-24L30~75CB

Reduction ratio : 30, 40, 50, 60, 75	Approx. weight : 11.5kg
Reference page : Specification Chart→P106	



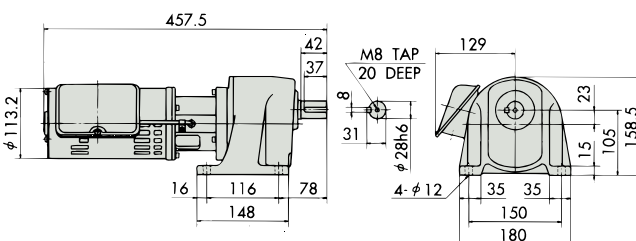
C-69 200W GMTA200-24U30~75CB

Reduction ratio : 30, 40, 50, 60, 75	Approx. weight : 11.3kg
Reference page : Specification Chart→P106 Options→P57	



C-66 200W GMTA200-28L100~200CB

Reduction ratio : 100, 120, 165, 200	Approx. weight : 13.9kg
Reference page : Specification Chart→P106	



C-70 200W GMTA200-28U100~200CB

Reduction ratio : 100, 120, 165, 200	Approx. weight : 13.7kg
Reference page : Specification Chart→P106 Options→P57	

