

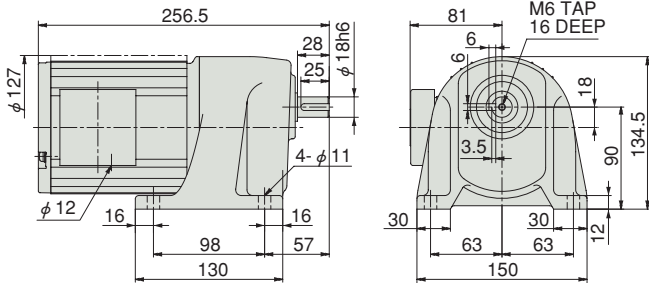
Gear Motor TA Series Outline Dimensions

Three-phase 0.1 kW · L : Foot mount non-brake type

GEAR MOTOR TA Series

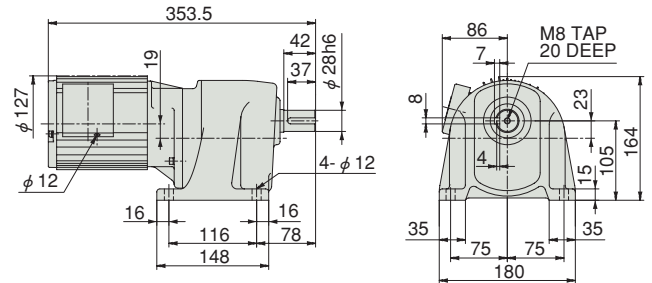
M-11 0.1kW GMTA010-18L5

Reduction ratio : 5 Approx. weight : 6.6kg
Reference page : Specification Chart→P25



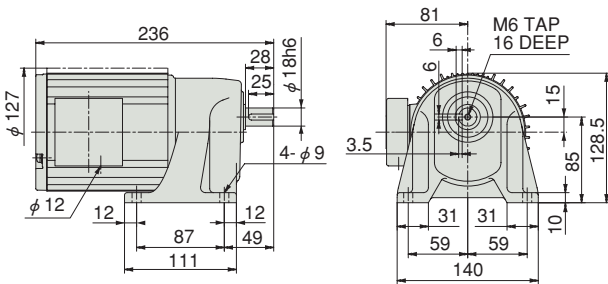
M-14 0.1kW GMTA010-28L300~450

Reduction ratio : 300, 360, 450 Approx. weight : 10.5kg
Reference page : Specification Chart→P25



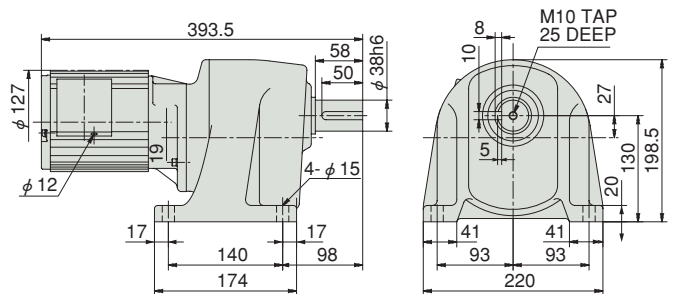
M-12 0.1kW GMTA010-18L10~50

Reduction ratio : 10, 15, 20, 25, 30, 40, 50 Approx. weight : 5.4kg
Reference page : Specification Chart→P25



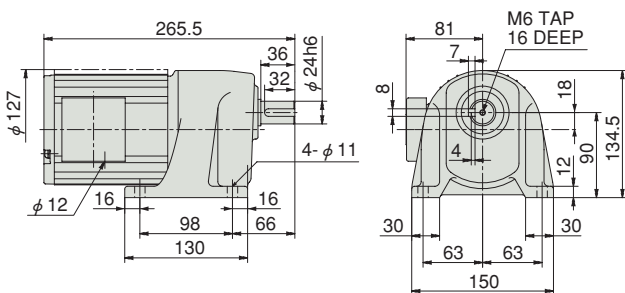
M-15 0.1kW GMTA010-38L600~1200

Reduction ratio : 600, 720, 1000, 1200 Approx. weight : 14.5kg
Reference page : Specification Chart→P25



M-13 0.1kW GMTA010-24L60~200

Reduction ratio : 60, 75, 100, 120, 165, 200 Approx. weight : 6.8kg
Reference page : Specification Chart→P25



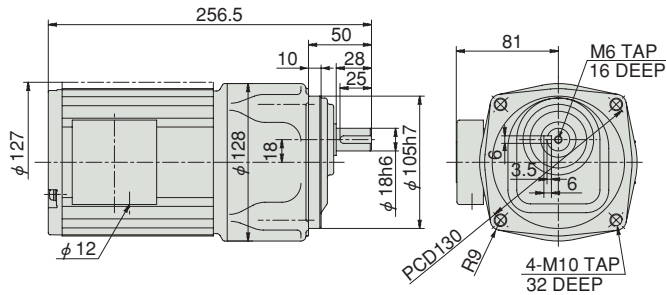
Gear Motor TA Series Outline Dimensions

Three-phase 0.1 kW · U : Face mount non-brake type

GEAR MOTOR TA Series

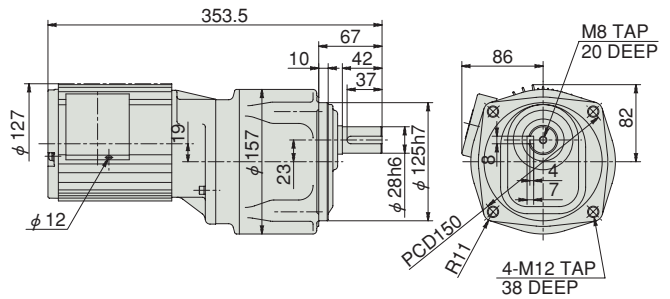
M-16 0.1kW GMTA010-18U5

Reduction ratio : 5	Approx. weight : 6.6kg
Reference page : Specification Chart→P25 Options →P57	



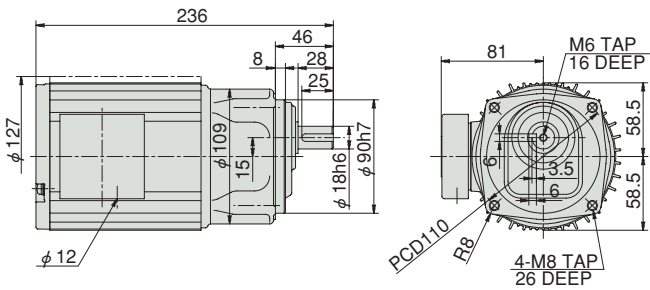
M-19 0.1kW GMTA010-28U300~450

Reduction ratio : 300, 360, 450	Approx. weight : 10.5kg
Reference page : Specification Chart→P25 Options →P57	



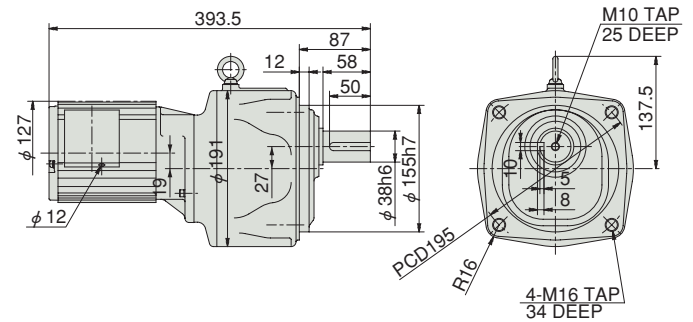
M-17 0.1kW GMTA010-18U10~50

Reduction ratio : 10, 15, 20, 25, 30, 40, 50	Approx. weight : 5.2kg
Reference page : Specification Chart→P25 Options →P57	



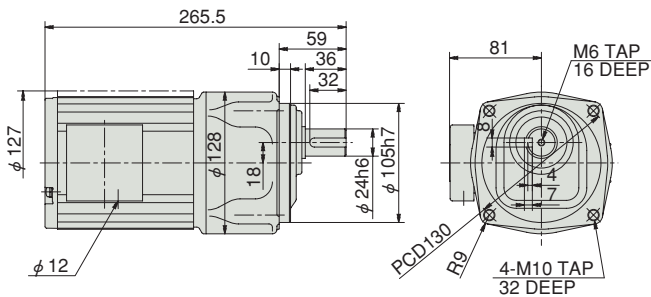
M-20 0.1kW GMTA010-38U600~1200

Reduction ratio : 600, 720, 1000, 1200	Approx. weight : 20.0kg
Reference page : Specification Chart→P25 Options →P58	



M-18 0.1kW GMTA010-24U60~200

Reduction ratio : 60, 75, 100, 120, 165, 200	Approx. weight : 6.6kg
Reference page : Specification Chart→P25 Options →P57	



Outline Dimensions

U

M-16
M-17
M-18
M-19
M-20

0.1

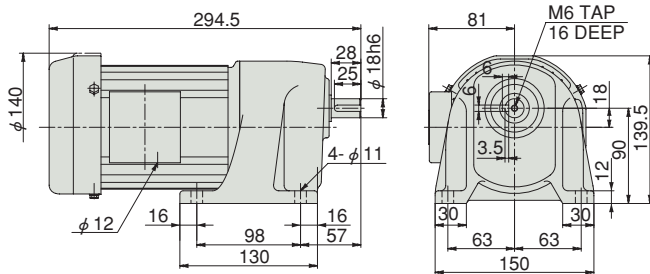
Gear Motor TA Series Outline Dimensions

Three-phase 0.2 kW · L : Foot mount non-brake type

GEAR MOTOR TA Series

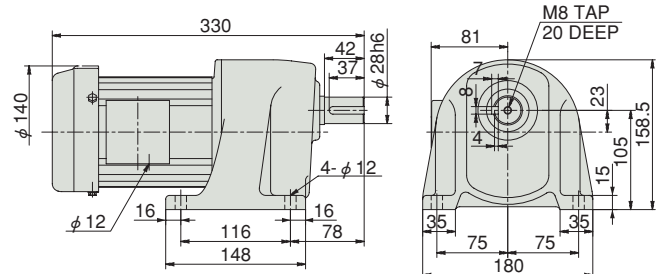
M-21 0.2kW GMTA020-18L5

Reduction ratio : 5 Approx. weight : 6.7kg
Reference page : Specification Chart→P25



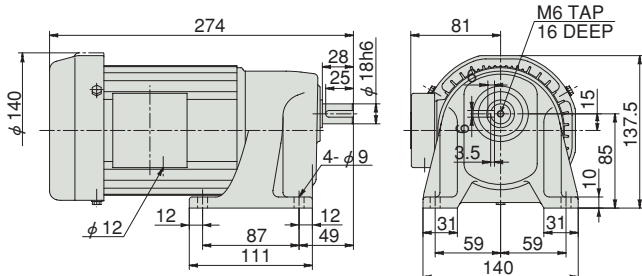
M-24 0.2kW GMTA020-28L100~200

Reduction ratio : 100, 120, 165, 200 Approx. weight : 9.3kg
Reference page : Specification Chart→P25



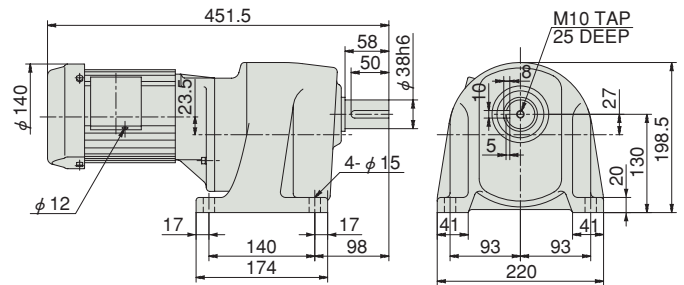
M-22 0.2kW GMTA020-18L10~25

Reduction ratio : 10, 15, 20, 25 Approx. weight : 5.5kg
Reference page : Specification Chart→P25



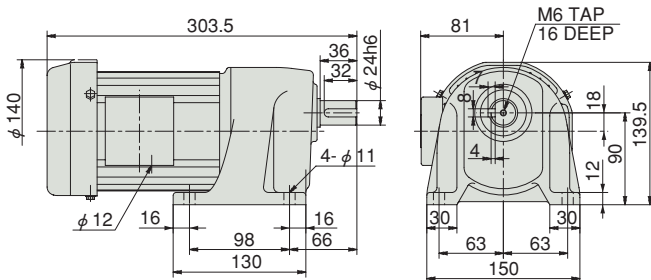
M-25 0.2kW GMTA020-38L300~450

Reduction ratio : 300, 360, 450 Approx. weight : 15.3kg
Reference page : Specification Chart→P25



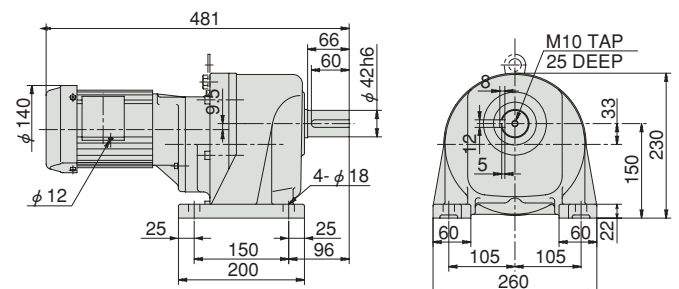
M-23 0.2kW GMTA020-24L30~75

Reduction ratio : 30, 40, 50, 60, 75 Approx. weight : 6.9kg
Reference page : Specification Chart→P25



M-26 0.2kW GMTA020-42L600~1200

Reduction ratio : 600, 720, 1000, 1200 Approx. weight : 37.4kg
Reference page : Specification Chart→P25



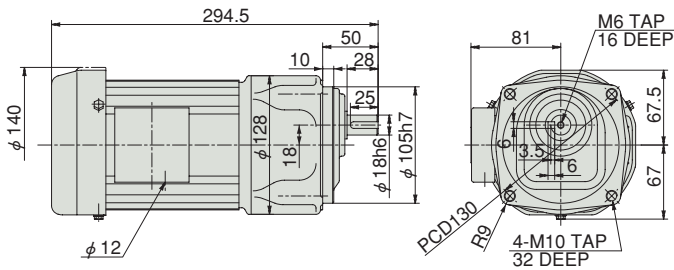
Gear Motor TA Series Outline Dimensions

Three-phase 0.2 kW · U : Face mount type / F : Flange mount non-brake type

GEAR MOTOR TA Series

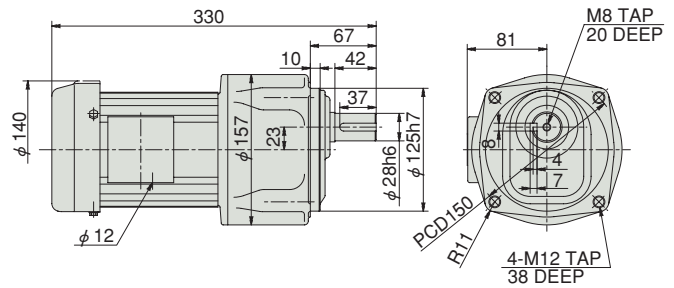
M-27 0.2kW GMTA020-18U5

Reduction ratio : 5 Approx. weight : 6.7kg
Reference page : Specification Chart→P25 Options→P57



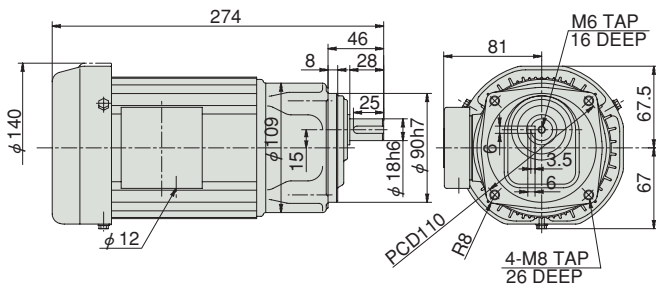
M-30 0.2kW GMTA020-28U100~200

Reduction ratio : 100, 120, 165, 200 Approx. weight : 9.1kg
Reference page : Specification Chart→P25 Options→P57



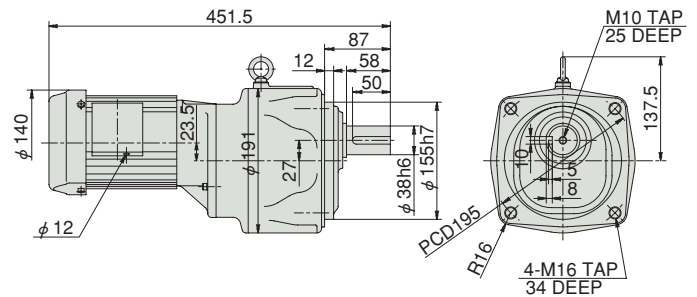
M-28 0.2kW GMTA020-18U10~25

Reduction ratio : 10, 15, 20, 25 Approx. weight : 5.3kg
Reference page : Specification Chart→P25 Options→P57



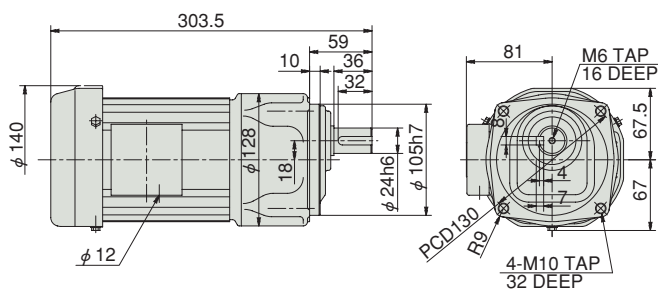
M-31 0.2kW GMTA020-38U300~450

Reduction ratio : 300, 360, 450 Approx. weight : 21.3kg
Reference page : Specification Chart→P25 Options→P58



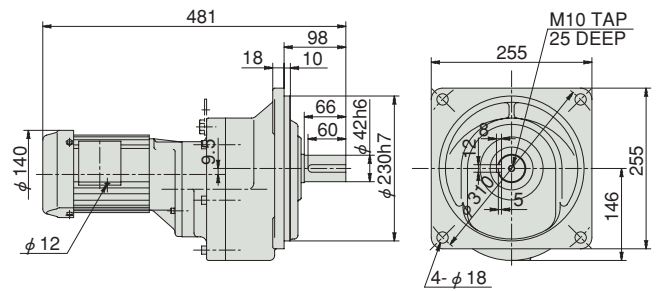
M-29 0.2kW GMTA020-24U30~75

Reduction ratio : 30, 40, 50, 60, 75 Approx. weight : 6.7kg
Reference page : Specification Chart→P25 Options→P57



M-32 0.2kW GMTA020-42F600~1200

Reduction ratio : 600, 720, 1000, 1200 Approx. weight : 39.4kg
Reference page : Specification Chart→P25



Outline Dimensions

U.F
M-27
M-28
M-29
M-30
M-31
M-32

0.2

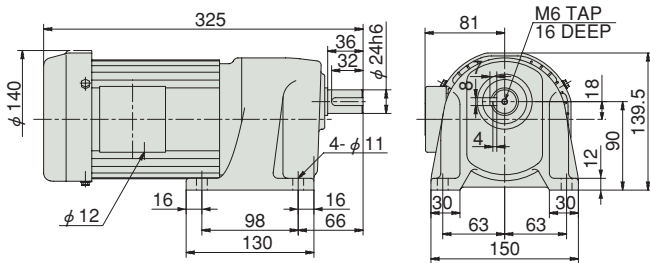
Gear Motor TA Series Outline Dimensions

Three-phase 0.4 kW · L : Foot mount non-brake type

GEAR MOTOR TA Series

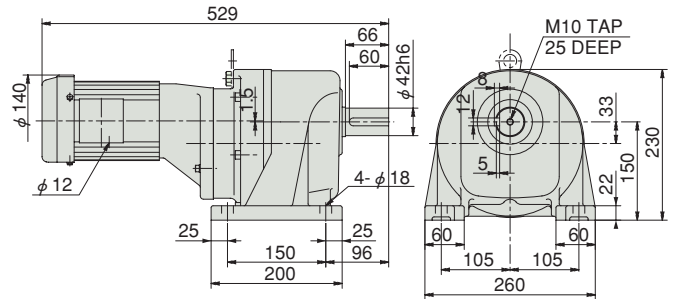
M-33 0.4kW GMTA040-24L5~25

Reduction ratio : 5, 10, 15, 20, 25 Approx. weight : 7.5kg
Reference page : Specification Chart→P26



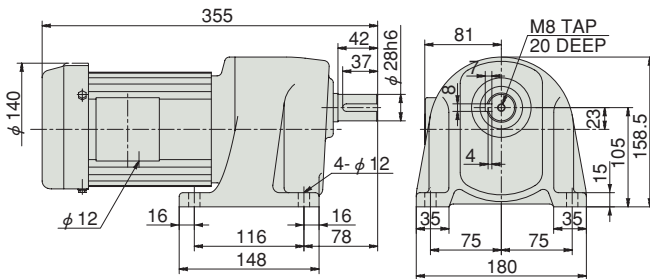
M-36 0.4kW GMTA040-42L300~450

Reduction ratio : 300, 360, 450 Approx. weight : 43.1kg
Reference page : Specification Chart→P26



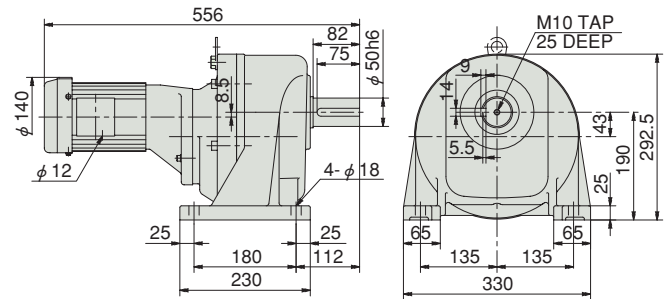
M-34 0.4kW GMTA040-28L30~75

Reduction ratio : 30, 40, 50, 60, 75 Approx. weight : 10.0kg
Reference page : Specification Chart→P26



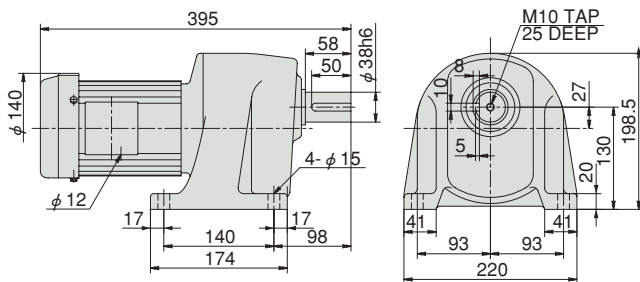
M-37 0.4kW GMTA040-50L600~1200

Reduction ratio : 600, 720, 1000, 1200 Approx. weight : 63.1kg
Reference page : Specification Chart→P26



M-35 0.4kW GMTA040-38L100~200

Reduction ratio : 100, 120, 165, 200 Approx. weight : 14.0kg
Reference page : Specification Chart→P26



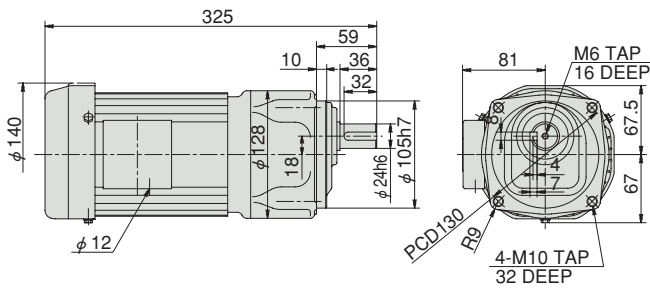
Gear Motor TA Series Outline Dimensions

Three-phase 0.4 kW · U : Face mount type / F : Flange mount non-brake type

GEAR MOTOR TA Series

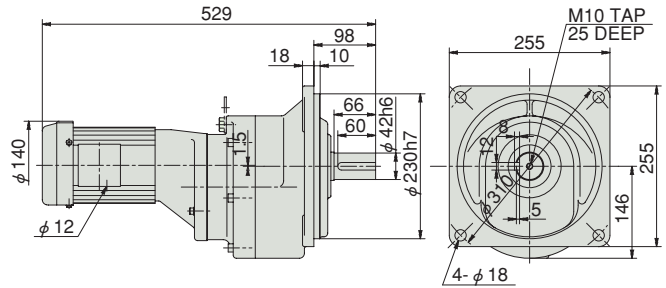
M-38 0.4kW GMTA040-24U5~25

Reduction ratio : 5, 10, 15, 20, 25 Approx. weight : 7.3kg
 Reference page : Specification Chart→P26 Options→P57



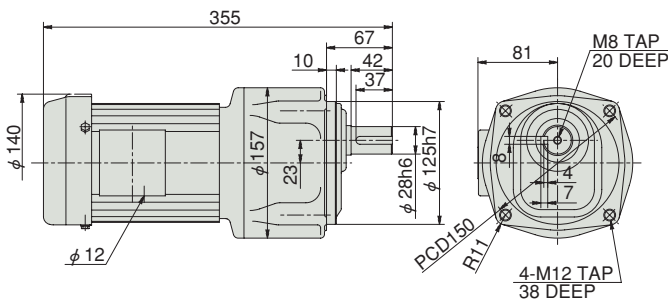
M-41 0.4kW GMTA040-42F300~450

Reduction ratio : 300, 360, 450 Approx. weight : 44.1kg
 Reference page : Specification Chart→P26



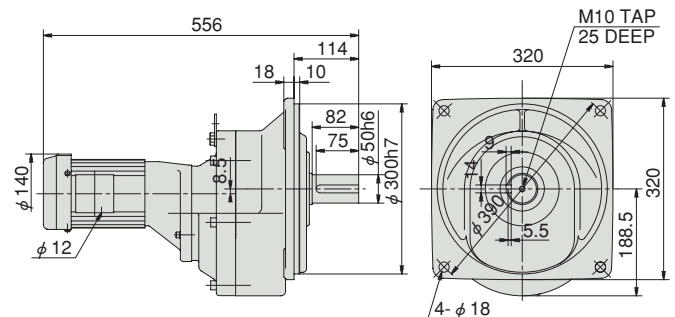
M-39 0.4kW GMTA040-28U30~75

Reduction ratio : 30, 40, 50, 60, 75 Approx. weight : 12.0kg
 Reference page : Specification Chart→P26 Options→P57



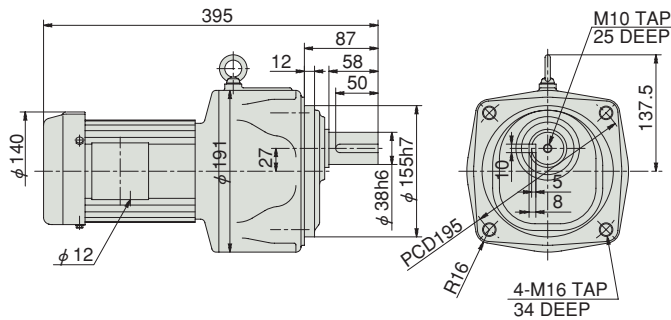
M-42 0.4kW GMTA040-50F600~1200

Reduction ratio : 600, 720, 1000, 1200 Approx. weight : 65.1kg
 Reference page : Specification Chart→P26



M-40 0.4kW GMTA040-38U100~200

Reduction ratio : 100, 120, 165, 200 Approx. weight : 20.0kg
 Reference page : Specification Chart→P26 Options→P58



Outline Dimensions

U.F
 M-38
 M-39
 M-40
 M-41
 M-42

0.4

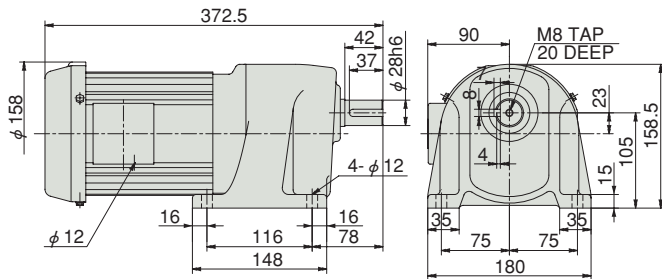
Gear Motor TA Series Outline Dimensions

Three-phase 0.75 kW · L : Foot mount type / U : Face mount type / F : Flange mount non-brake type

GEAR MOTOR TA Series

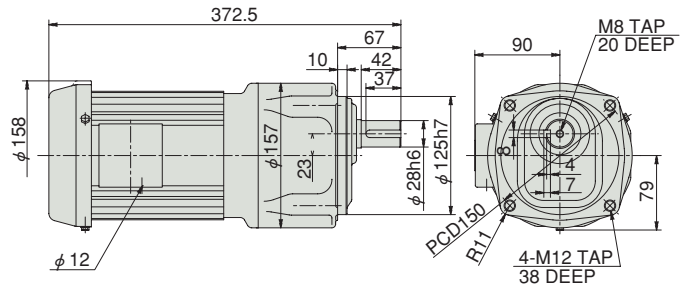
M-43 0.75kW GMTA075-28L5~25

Reduction ratio : 5, 10, 15, 20, 25 Approx. weight : 12.5kg
Reference page : Specification Chart→P26



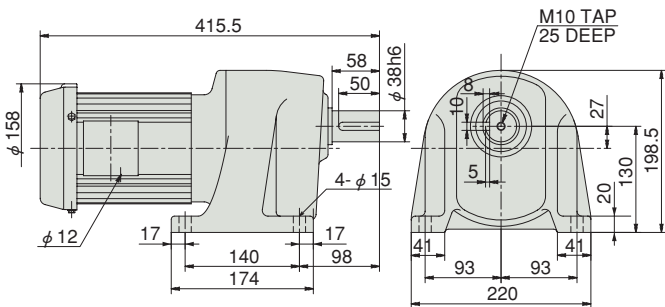
M-47 0.75kW GMTA075-28U5~25

Reduction ratio : 5, 10, 15, 20, 25 Approx. weight : 12.5kg
Reference page : Specification Chart→P26 Options→P57



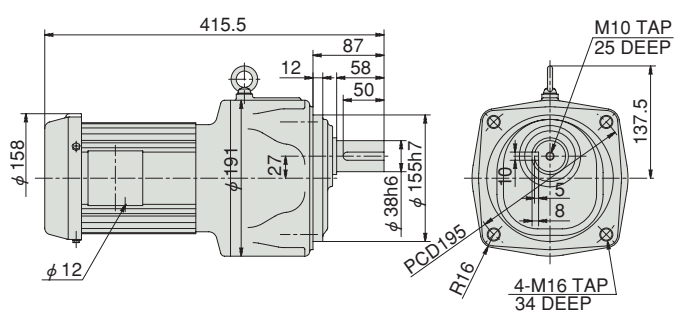
M-44 0.75kW GMTA075-38L30~75

Reduction ratio : 30, 40, 50, 60, 75 Approx. weight : 16.5kg
Reference page : Specification Chart→P26



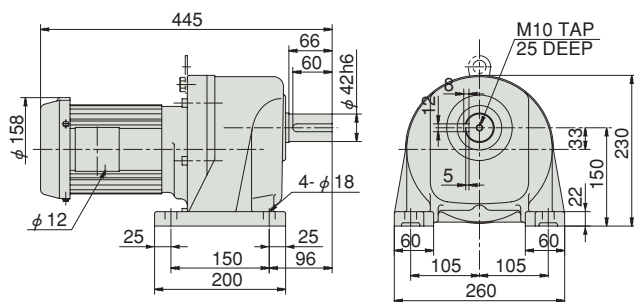
M-48 0.75kW GMTA075-38U30~75

Reduction ratio : 30, 40, 50, 60, 75 Approx. weight : 22.5kg
Reference page : Specification Chart→P26 Options→P58



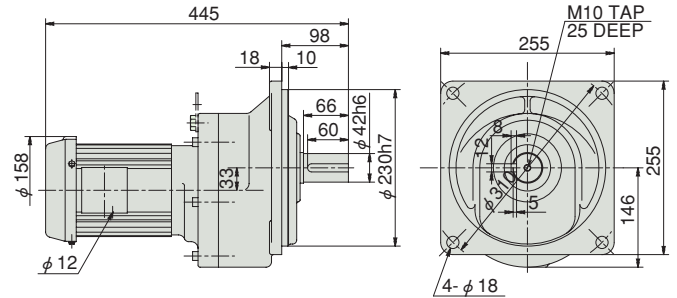
M-45 0.75kW GMTA075-42L100~200

Reduction ratio : 100, 120, 165, 200 Approx. weight : 38.0kg
Reference page : Specification Chart→P26



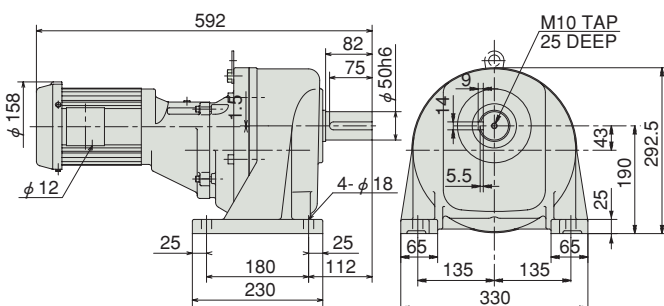
M-49 0.75kW GMTA075-42F100~200

Reduction ratio : 100, 120, 165, 200 Approx. weight : 40.0kg
Reference page : Specification Chart→P26



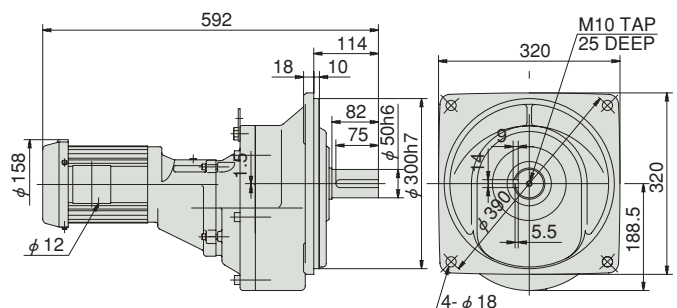
M-46 0.75kW GMTA075-50L300~450

Reduction ratio : 300, 360, 450 Approx. weight : 62.1kg
Reference page : Specification Chart→P26



M-50 0.75kW GMTA075-50F300~450

Reduction ratio : 300, 360, 450 Approx. weight : 65.1kg
Reference page : Specification Chart→P26



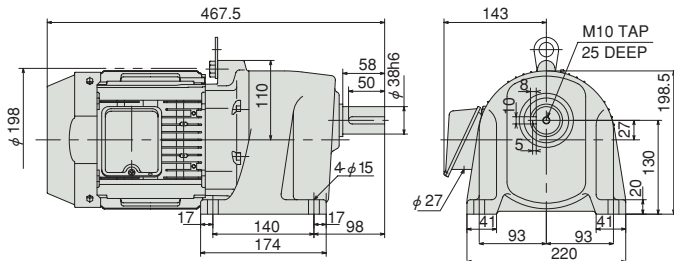
Gear Motor TA Series Outline Dimensions

Three-phase 1.5 kW · L : Foot mount type / U : Face mount type / F : Flange mount non-brake type

GEAR MOTOR TA Series

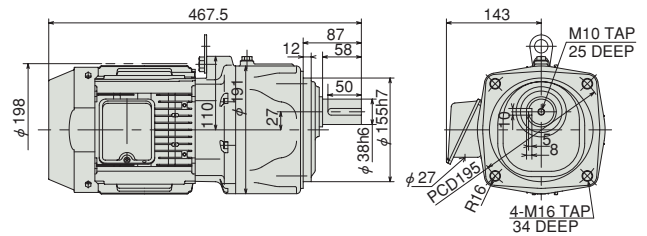
M-51 1.5kW GMTA150-38L5~30

Reduction ratio : 5, 10, 15, 20, 25, 30	Approx. weight : 26.0kg
Reference page : Specification Chart→P26	



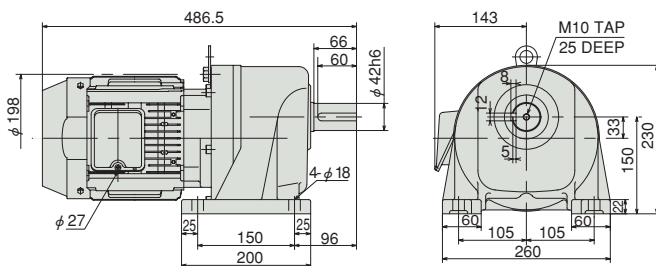
M-54 1.5kW GMTA150-38U5~30

Reduction ratio : 5, 10, 15, 20, 25, 30	Approx. weight : 33.0kg
Reference page : Specification Chart→P26 Options→P58	



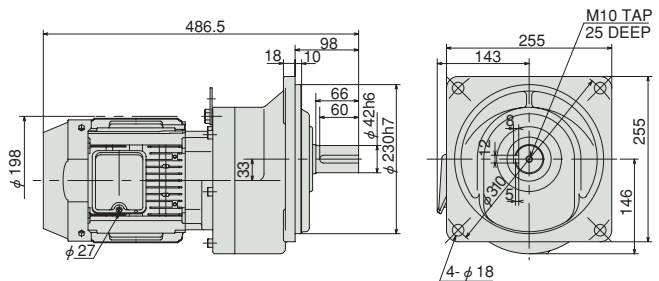
M-52 1.5kW GMTA150-42L40~75

Reduction ratio : 40, 50, 60, 75	Approx. weight : 47.0kg
Reference page : Specification Chart→P26	



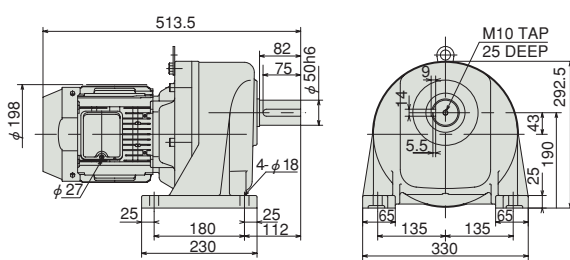
M-55 1.5kW GMTA150-42F40~75

Reduction ratio : 40, 50, 60, 75	Approx. weight : 48.0kg
Reference page : Specification Chart→P26	



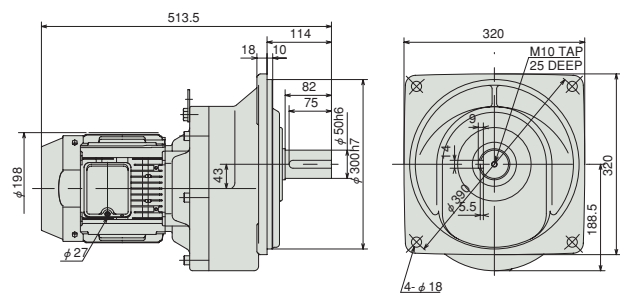
M-53 1.5kW GMTA150-50L100~200

Reduction ratio : 100, 120, 165, 200	Approx. weight : 67.0kg
Reference page : Specification Chart→P26	



M-56 1.5kW GMTA150-50F100~200

Reduction ratio : 100, 120, 165, 200	Approx. weight : 69.0kg
Reference page : Specification Chart→P26	



Outline Dimensions

L.U.F

- M-51
- M-52
- M-53
- M-54
- M-55
- M-56

1.5

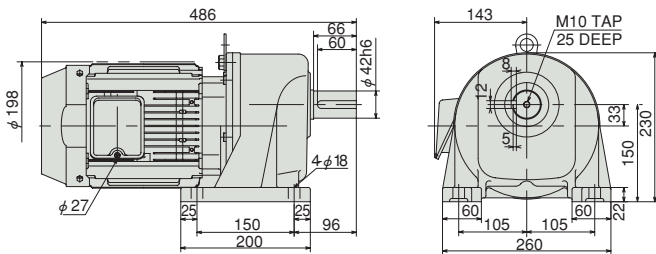
Gear Motor TA Series Outline Dimensions

Three-phase 2.2 kW · L : Foot mount type / F : Flange mount non-brake type

GEAR MOTOR TA Series

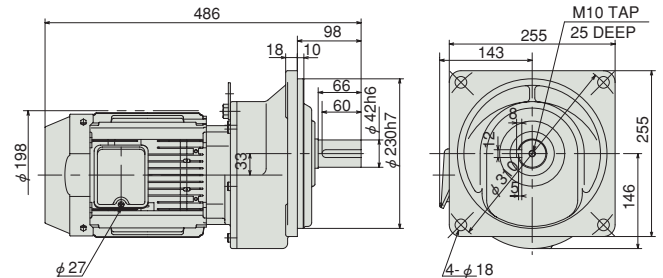
M-57 2.2kW GMTA220-42L5~30

Reduction ratio : 5, 10, 15, 20, 25, 30 Approx. weight : 46.0kg
Reference page : Specification Chart→P27



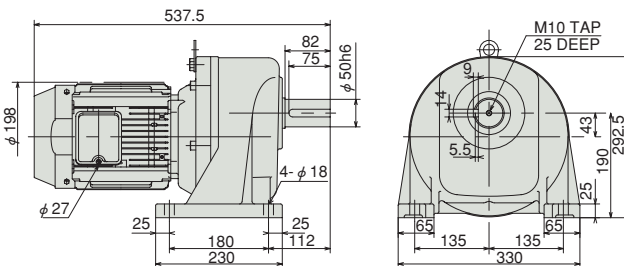
M-60 2.2kW GMTA220-42F5~30

Reduction ratio : 5, 10, 15, 20, 25, 30 Approx. weight : 48.0kg
Reference page : Specification Chart→P27



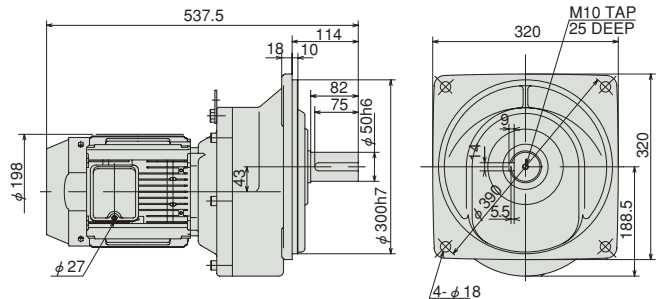
M-58 2.2kW GMTA220-50L40~75

Reduction ratio : 40, 50, 60, 75 Approx. weight : 67.0kg
Reference page : Specification Chart→P27



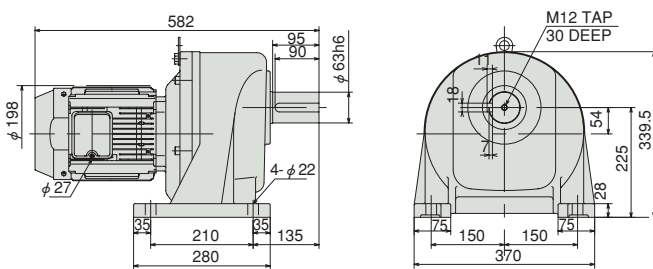
M-61 2.2kW GMTA220-50F40~75

Reduction ratio : 40, 50, 60, 75 Approx. weight : 70.0kg
Reference page : Specification Chart→P27



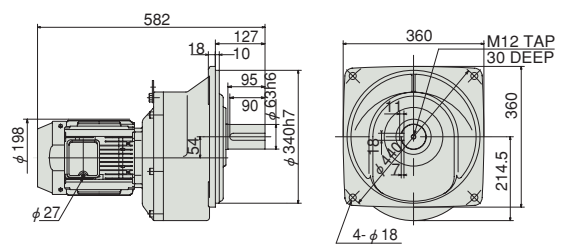
M-59 2.2kW GMTA220-63L100~200

Reduction ratio : 100, 120, 165, 200 Approx. weight : 98.0kg
Reference page : Specification Chart→P27



M-62 2.2kW GMTA220-63F100~200

Reduction ratio : 100, 120, 165, 200 Approx. weight : 102.0kg
Reference page : Specification Chart→P27



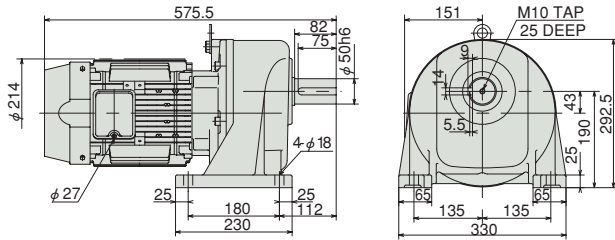
Gear Motor TA Series Outline Dimensions

Three-phase 3.7 kW · L : Foot mount type / F : Flange mount non-brake type

GEAR MOTOR TA Series

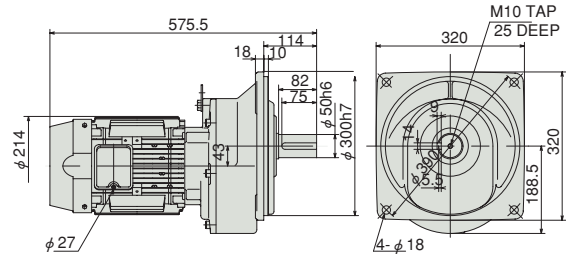
M-63 3.7kW GMTA370-50L5~30

Reduction ratio : 5, 10, 15, 20, 25, 30	Approx. weight : 72.0kg
Reference page : Specification Chart→P27	



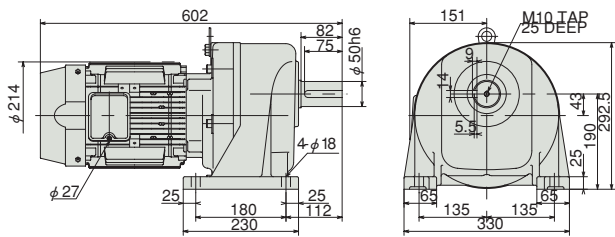
M-65 3.7kW GMTA370-50F5~30

Reduction ratio : 5, 10, 15, 20, 25, 30	Approx. weight : 74.0kg
Reference page : Specification Chart→P27	



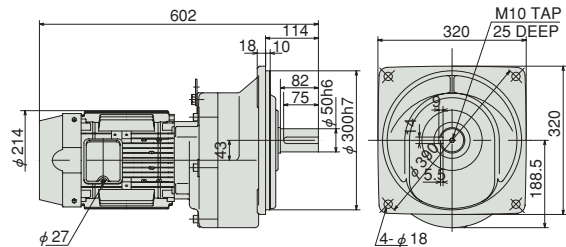
M-64 3.7kW GMTA370-50L40~50

Reduction ratio : 40, 50	Approx. weight : 76.0kg
Reference page : Specification Chart→P27	



M-66 3.7kW GMTA370-50F40~50

Reduction ratio : 40, 50	Approx. weight : 78.0kg
Reference page : Specification Chart→P27	

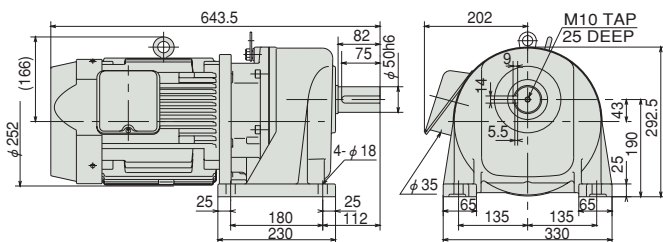


Three-phase 5.5 kW · L : Foot mount type / F : Flange mount brakeless-type

GEAR MOTOR TA Series

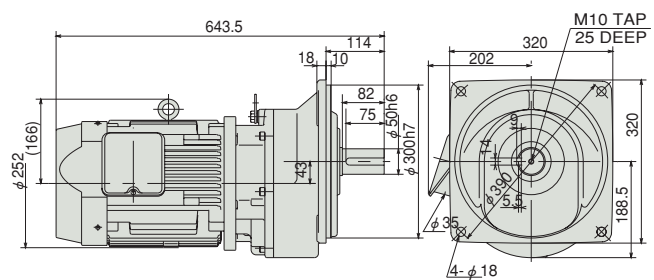
M-67 5.5kW GMTA550-50L5~30

Reduction ratio : 5, 10, 15, 20, 25, 30	Approx. weight : 92.0kg
Reference page : Specification Chart→P27	



M-68 5.5kW GMTA550-50F5~30

Reduction ratio : 5, 10, 15, 20, 25, 30	Approx. weight : 95.0kg
Reference page : Specification Chart→P27	



Outline Dimensions

L.F
M-63
M-64
M-65
M-66
M-67
M-68

3.7
5.5

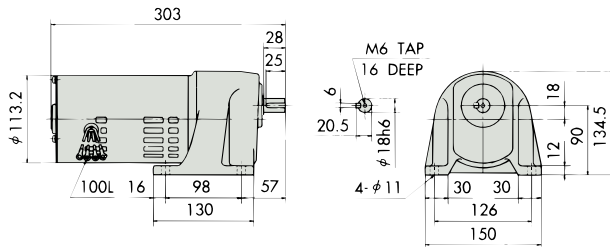
Gear Motor TA Series Outline Dimensions

Single-phase 100 W · L : Foot mount non-brake type

GEAR MOTOR TA Series

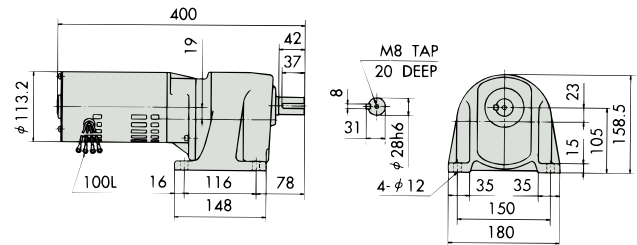
M-69 100W GMTA100-18L5

Reduction ratio : 5 Approx. weight : 7.4kg
Reference page : Specification Chart→P25



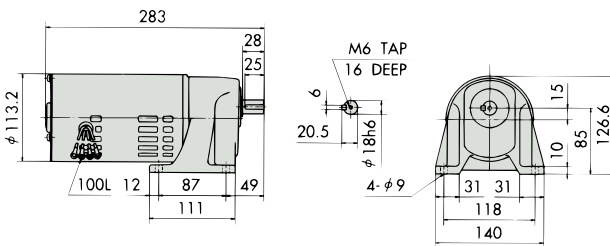
M-72 100W GMTA100-28L300~450

Reduction ratio : 300, 360, 450 Approx. weight : 11.0kg
Reference page : Specification Chart→P25



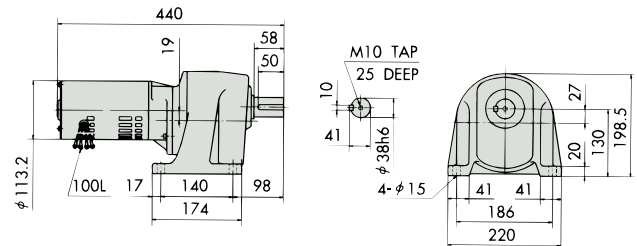
M-70 100W GMTA100-18L10~50

Reduction ratio : 10, 15, 20, 25, 30, 40, 50 Approx. weight : 6.2kg
Reference page : Specification Chart→P25



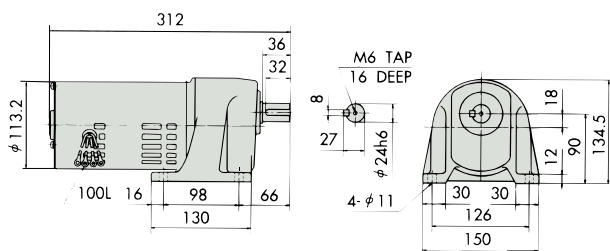
M-73 100W GMTA100-38L600~1200

Reduction ratio : 600, 720, 1000, 1200 Approx. weight : 15.0kg
Reference page : Specification Chart→P25



M-71 100W GMTA100-24L60~200

Reduction ratio : 60, 75, 100, 120, 165, 200 Approx. weight : 7.4kg
Reference page : Specification Chart→P25



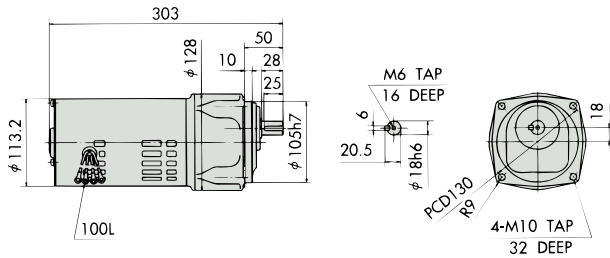
Gear Motor TA Series Outline Dimensions

Single-phase 100 W · U : Face mount non-brake type

GEAR MOTOR TA Series

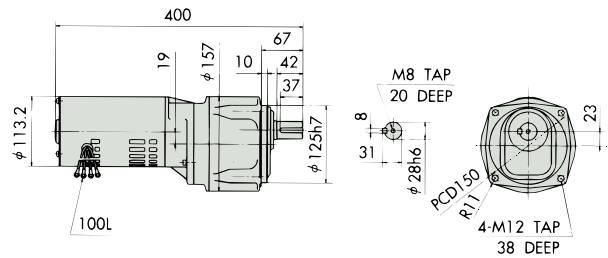
M-74 100W GMTA100-18U5

Reduction ratio : 5	Approx. weight : 7.2kg
Reference page : Specification Chart→P25 Options→P57	



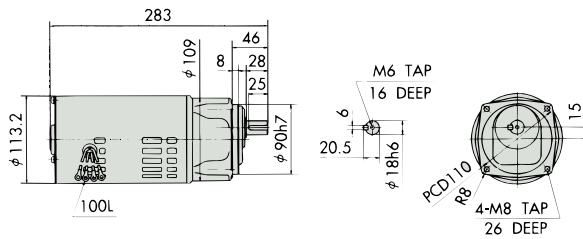
M-77 100W GMTA100-28U300~450

Reduction ratio : 300, 360, 450	Approx. weight : 11.0kg
Reference page : Specification Chart→P25 Options→P57	



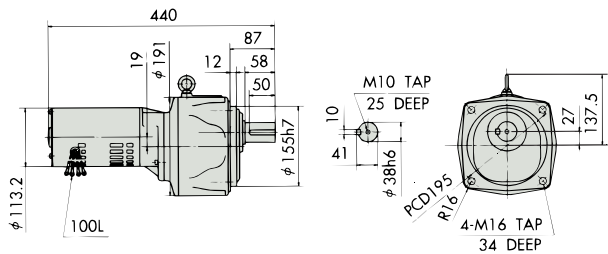
M-75 100W GMTA100-18U10~50

Reduction ratio : 10, 15, 20, 25, 30, 40, 50	Approx. weight : 6.0kg
Reference page : Specification Chart→P25 Options→P57	



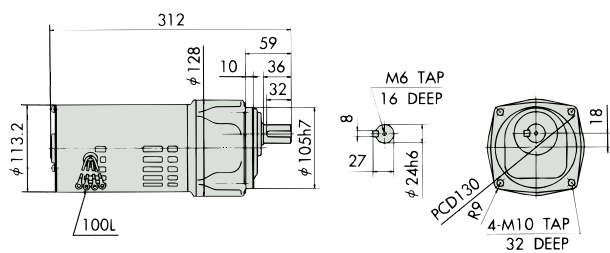
M-78 100W GMTA100-38U600~1200

Reduction ratio : 600, 720, 1000, 1200	Approx. weight : 21.0kg
Reference page : Specification Chart→P25 Options→P58	



M-76 100W GMTA100-24U60~200

Reduction ratio : 60, 75, 100, 120, 165, 200	Approx. weight : 7.4kg
Reference page : Specification Chart→P25 Options→P57	



Outline Dimensions

U

M-74
M-75
M-76
M-77
M-78

100

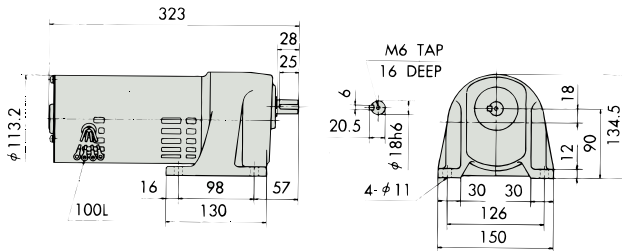
Gear Motor TA Series Outline Dimensions

Single-phase 200 W · L : Foot mount non-brake type

GEAR MOTOR TA Series

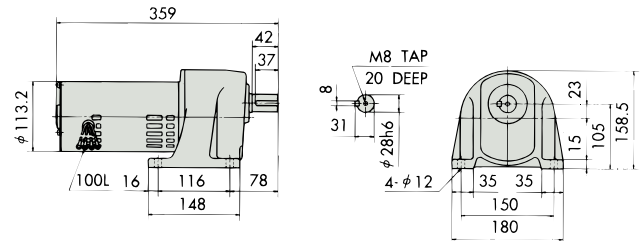
M-79 200W GMTA200-18L5

Reduction ratio : 5	Approx. weight : 9.0kg
Reference page : Specification Chart→P25	



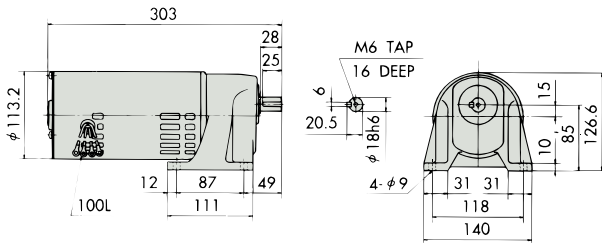
M-82 200W GMTA200-28L100~200

Reduction ratio : 100, 120, 165, 200	Approx. weight : 11.5kg
Reference page : Specification Chart→P25	



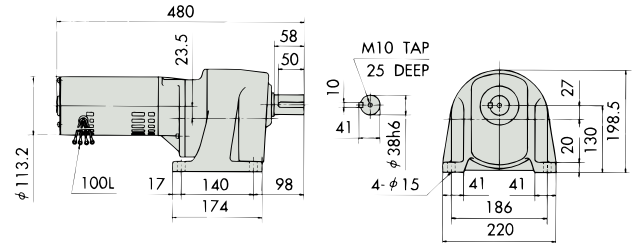
M-80 200W GMTA200-18L10~25

Reduction ratio : 10, 15, 20, 25	Approx. weight : 7.8kg
Reference page : Specification Chart→P25	



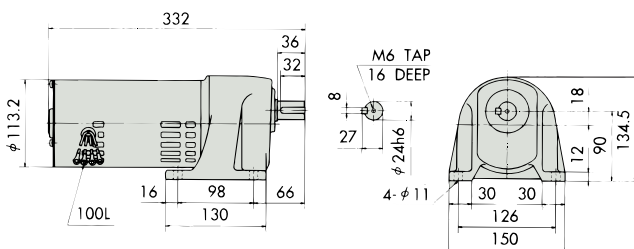
M-83 200W GMTA200-38L300~450

Reduction ratio : 300, 360, 450	Approx. weight : 17.5kg
Reference page : Specification Chart→P25	



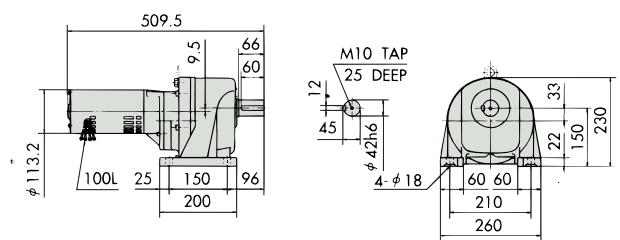
M-81 200W GMTA200-24L30~75

Reduction ratio : 30, 40, 50, 60, 75	Approx. weight : 9.2kg
Reference page : Specification Chart→P25	



M-84 200W GMTA200-42L600~1200

Reduction ratio : 600, 720, 1000, 1200	Approx. weight : 39.7kg
Reference page : Specification Chart→P25	



Outline Dimensions

L
M-79
M-80
M-81
M-82
M-83
M-84

200

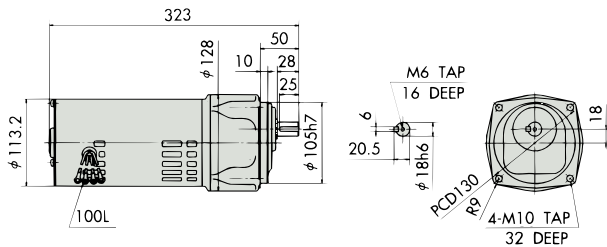
Gear Motor TA Series Outline Dimensions

Single-phase 200 W · U : Face mount type / F : Flange mount non-brake type

GEAR MOTOR TA Series

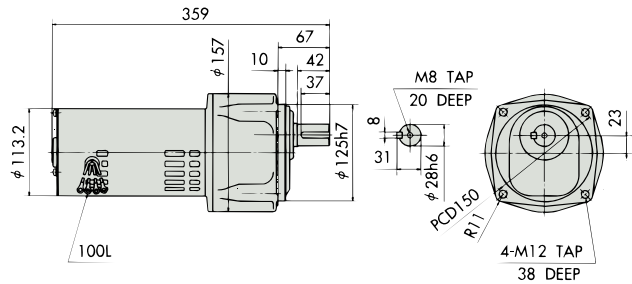
M-85 200W GMTA200-18U5

Reduction ratio : 5	Approx. weight : 9.0kg
Reference page : Specification Chart→P25 Options→P57	



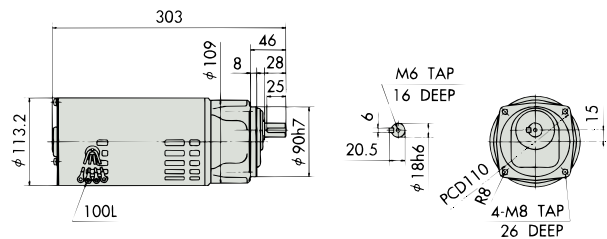
M-88 200W GMTA200-28U100~200

Reduction ratio : 100, 120, 165, 200	Approx. weight : 11.5kg
Reference page : Specification Chart→P25 Options→P57	



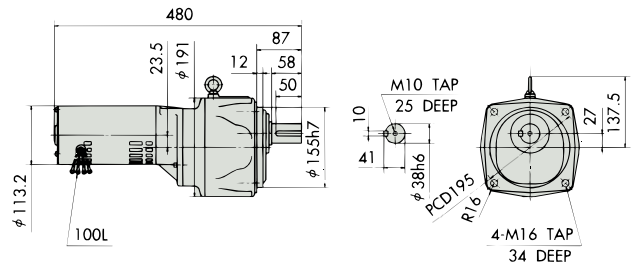
M-86 200W GMTA200-18U10~25

Reduction ratio : 10, 15, 20, 25	Approx. weight : 7.6kg
Reference page : Specification Chart→P25 Options→P57	



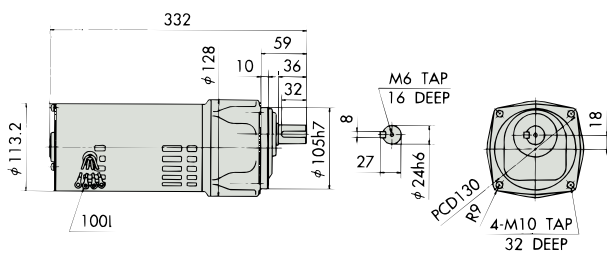
M-89 200W GMTA200-38U300~450

Reduction ratio : 300, 360, 450	Approx. weight : 23.5kg
Reference page : Specification Chart→P25 Options→P58	



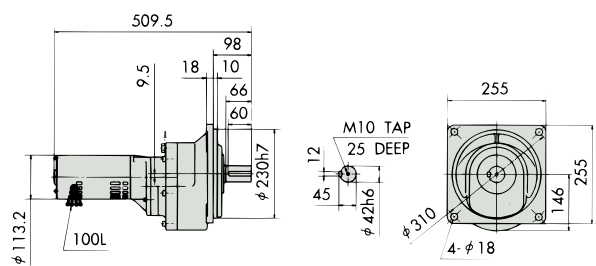
M-87 200W GMTA200-24U30~75

Reduction ratio : 30, 40, 50, 60, 75	Approx. weight : 9.0kg
Reference page : Specification Chart→P25 Options→P57	



M-90 200W GMTA200-42F600~1200

Reduction ratio : 600, 720, 1000, 1200	Approx. weight : 41.7kg
Reference page : Specification Chart→P25	



Outline Dimensions

U.F
M-85
M-86
M-87
M-88
M-89
M-90

200