

# Hypoid Motor TA Series Outline Dimensions

Hollow shaft type 0.1 kW · Non-brake type

HYPOID MOTOR TA Outline Dimensions ● Non-brake/Hollow

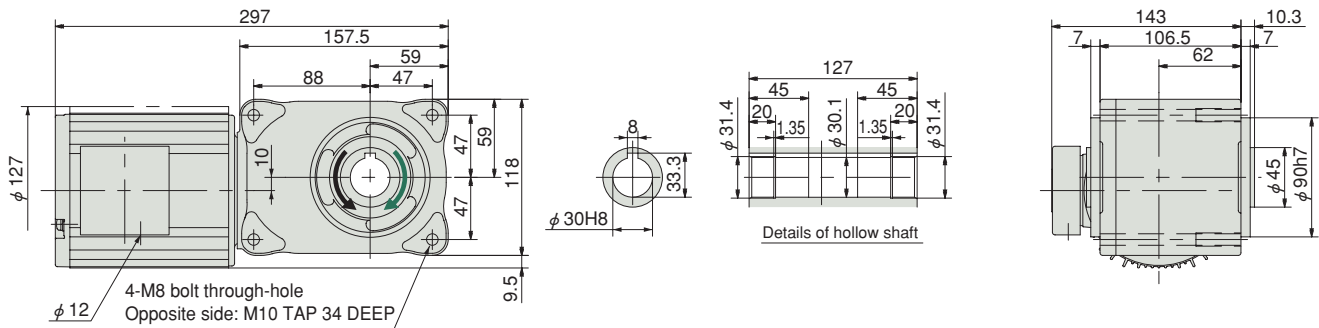
## M-1 0.1kW HMTA010-30H5~200

The direction of rotation of the output shaft is based on direction of rotation A shown on page 189. 1/5~1/60 ↺, 1/80~1/200 ↻

Reduction ratio : 5, 10, 15, 20, 25, 30, 40, 50, 60, 80, 100, 120, 160, 200

Approx. weight : 9.0kg

Reference page : Specification Chart→P131 Options→P184



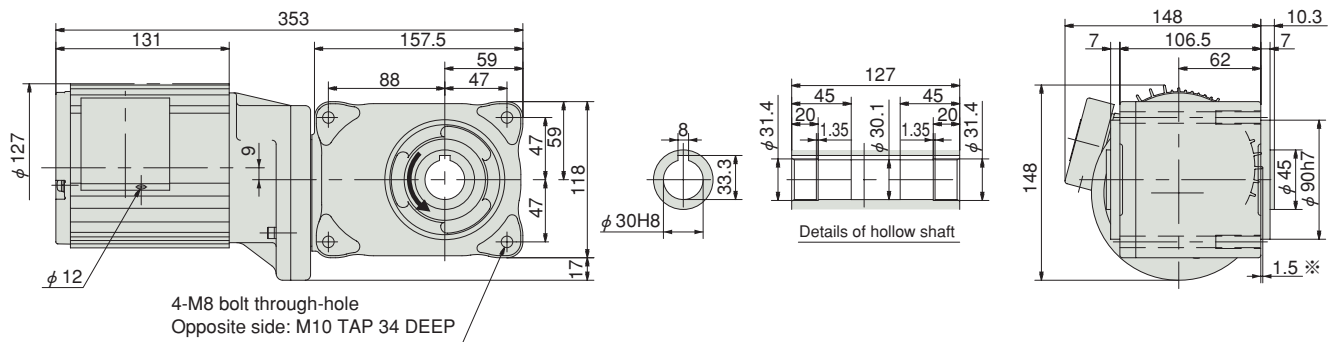
## M-2 0.1kW HMTA010-30H300~480

The direction of rotation of the output shaft is based on direction of rotation A shown on page 189.

Reduction ratio : 300, 360, 480

Approx. weight : 11.1kg

Reference page : Specification Chart→P131 Options→P184



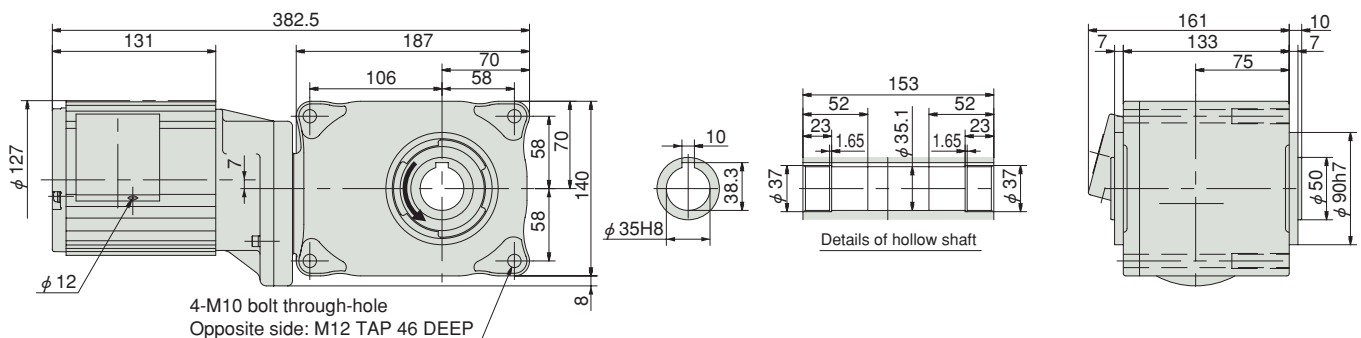
## M-3 0.1kW HMTA010-35H600~1200

The direction of rotation of the output shaft is based on direction of rotation A shown on page 189.

Reduction ratio : 600, 720, 960, 1200

Approx. weight : 14.0kg

Reference page : Specification Chart→P131 Options→P184



Note) The dimension marked with \* indicates that part of the motor protrudes from the mounting surface.

Outline Dimensions

H

M-1

M-2

M-3

0.1

# Hypoid Motor TA Series Outline Dimensions

Hollow shaft type 0.2 kW · Non-brake type

HYPOID MOTOR TA Outline Dimensions ● Non-brake/Hollow

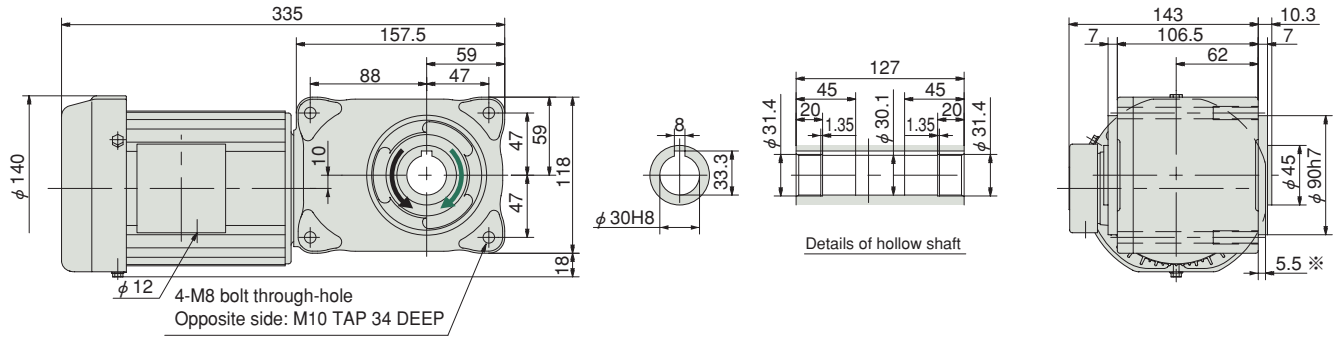
## M-4 0.2kW HMTA020-30H5~200

The direction of rotation of the output shaft is based on direction of rotation A shown on page 189. 1/5~1/60 ↺、1/80~1/200 ↻

Reduction ratio : 5, 10, 15, 20, 25, 30, 40, 50, 60, 80, 100, 120, 160, 200

Approx. weight : 8.8kg

Reference page : Specification Chart→P131 Options→P184



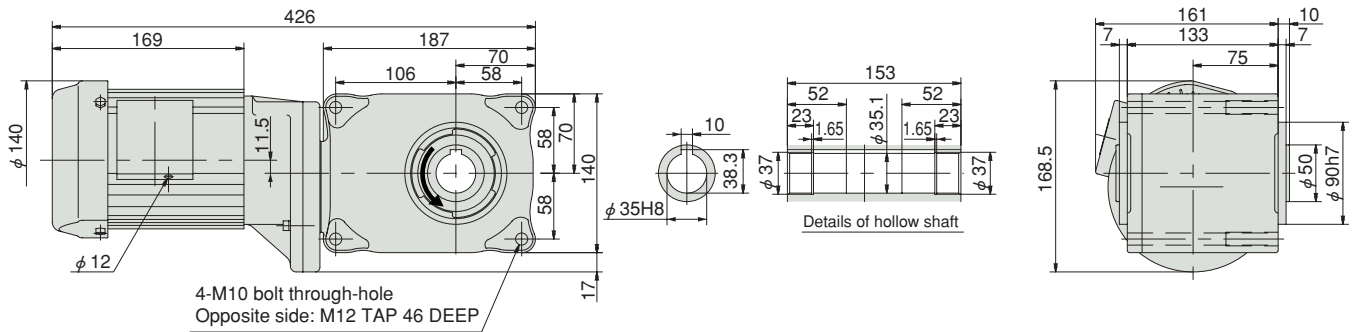
## M-5 0.2kW HMTA020-35H300~480

The direction of rotation of the output shaft is based on direction of rotation A shown on page 189.

Reduction ratio : 300, 360, 480

Approx. weight : 14.0kg

Reference page : Specification Chart→P131 Options→P184



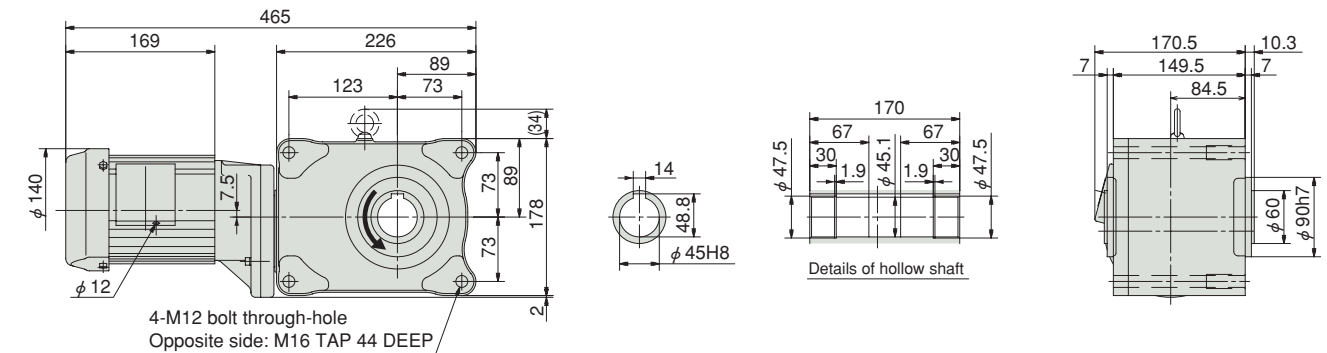
## M-6 0.2kW HMTA020-45H600~1200

The direction of rotation of the output shaft is based on direction of rotation A shown on page 189.

Reduction ratio : 600, 720, 960, 1200

Approx. weight : 21.3kg

Reference page : Specification Chart→P131 Options→P184



Note) The dimension marked with ※ indicates that part of the motor protrudes from the mounting surface.

# Hypoid Motor TA Series Outline Dimensions

Hollow shaft type 0.4 kW · Non-brake type

HYPOID MOTOR TA Outline Dimensions ● Non-brake/Hollow

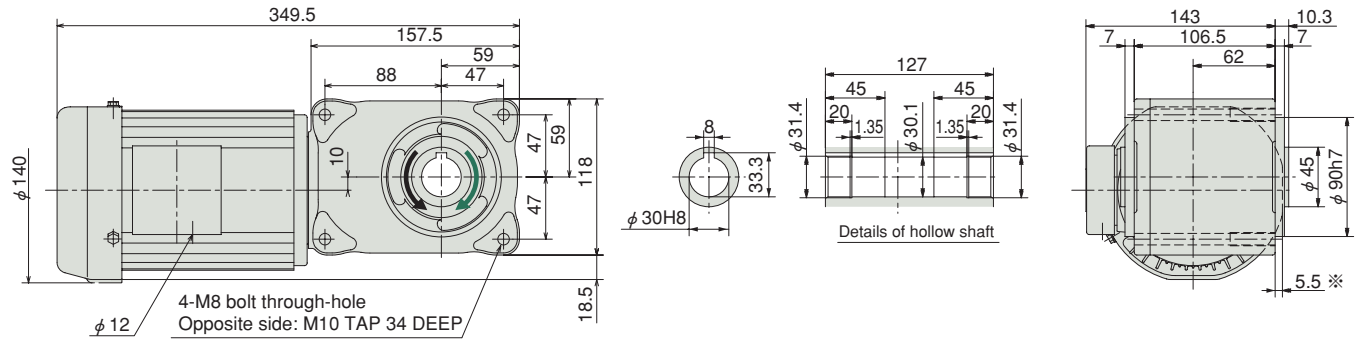
## M-7 0.4kW HMTA040-30H5~50

The direction of rotation of the output shaft is based on direction of rotation A shown on page 189. 1/5~1/30 ↺、1/40~1/50 ↻

Reduction ratio : 5, 10, 15, 20, 25, 30, 40, 50

Approx. weight : 9.4kg

Reference page : Specification Chart→P132 Options→P184



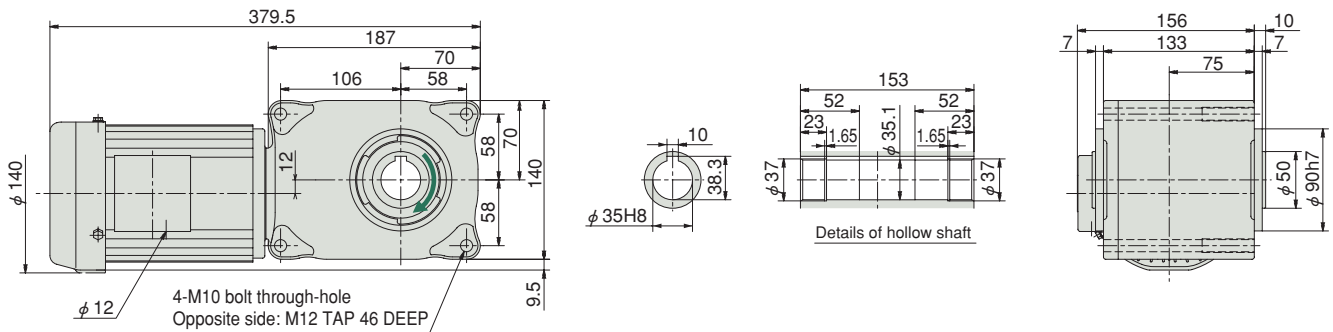
## M-8 0.4kW HMTA040-35H60~200

The direction of rotation of the output shaft is based on direction of rotation A shown on page 189.

Reduction ratio : 60, 80, 100, 120, 160, 200

Approx. weight : 14.2kg

Reference page : Specification Chart→P132 Options→P184



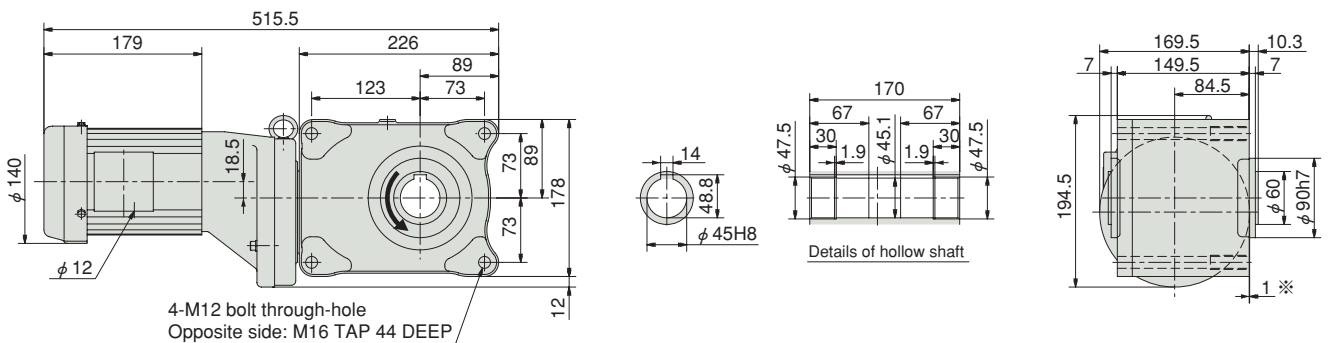
## M-9 0.4kW HMTA040-45H300~480

The direction of rotation of the output shaft is based on direction of rotation A shown on page 189.

Reduction ratio : 300, 360, 480

Approx. weight : 26.2kg

Reference page : Specification Chart→P132 Options→P184



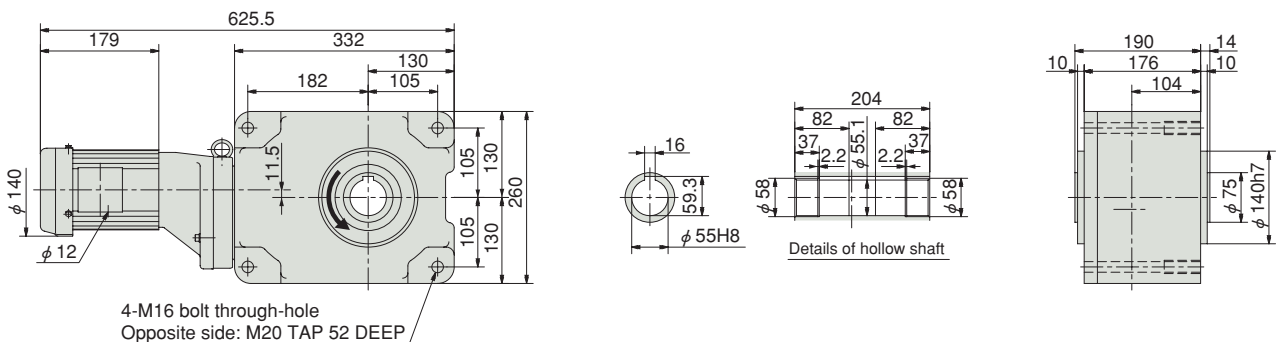
## M-10 0.4kW HMTA040-55H600~1200

The direction of rotation of the output shaft is based on direction of rotation A shown on page 189.

Reduction ratio : 600, 720, 960, 1200

Approx. weight : 52.8kg

Reference page : Specification Chart→P132 Options→P184



Note) The dimension marked with \* indicates that part of the motor protrudes from the mounting surface.

# Hypoid Motor TA Series Outline Dimensions

Hollow shaft type 0.75 kW · Non-brake type

HYPOID MOTOR TA Outline Dimensions ● Non-brake/Hollow

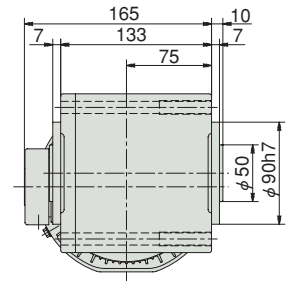
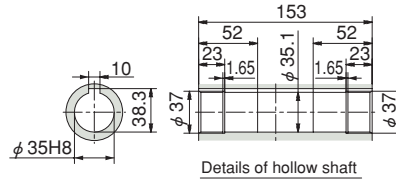
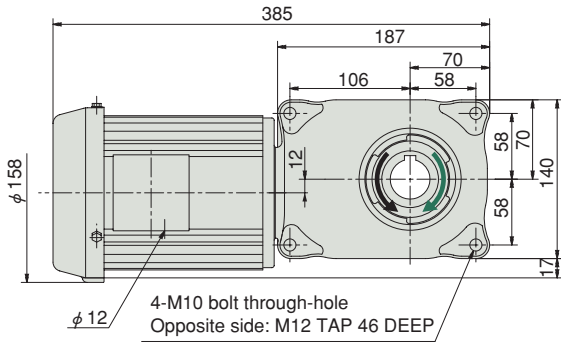
## M-11 0.75kW HMTA075-35H5~50

The direction of rotation of the output shaft is based on direction of rotation A shown on page 189. 1/5~1/60 ↺、1/80~1/240 ↻

Reduction ratio : 5, 10, 15, 20, 25, 30, 40, 50

Approx. weight : 19.0kg

Reference page : Specification Chart→P132 Options→P184



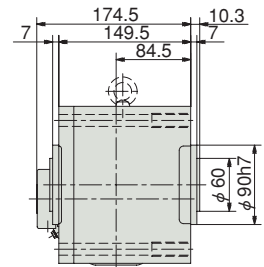
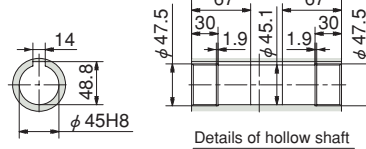
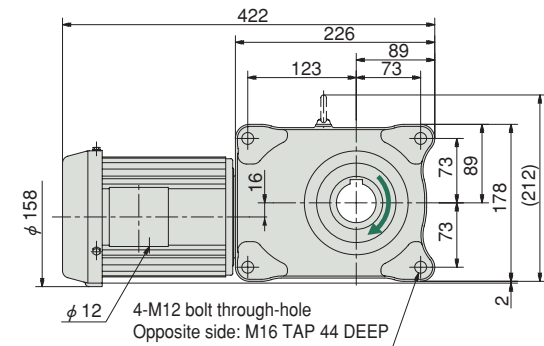
## M-12 0.75kW HMTA075-45H60~200

The direction of rotation of the output shaft is based on direction of rotation A shown on page 189.

Reduction ratio : 60, 80, 100, 120, 160, 200

Approx. weight : 23.0kg

Reference page : Specification Chart→P132 Options→P184



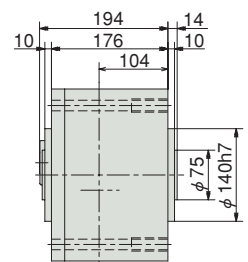
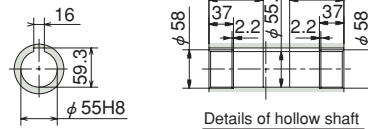
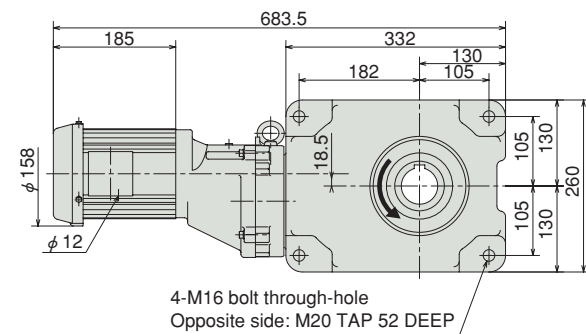
## M-13 0.75kW HMTA075-55H300~480

The direction of rotation of the output shaft is based on direction of rotation A shown on page 189.

Reduction ratio : 300, 360, 480

Approx. weight : 61.5kg

Reference page : Specification Chart→P132 Options→P184



# Hypoid Motor TA Series Outline Dimensions

Hollow shaft type 1.5 · 2.2 kW · Non-brake type

HYPOID MOTOR TA Outline Dimensions ● Non-brake/Hollow

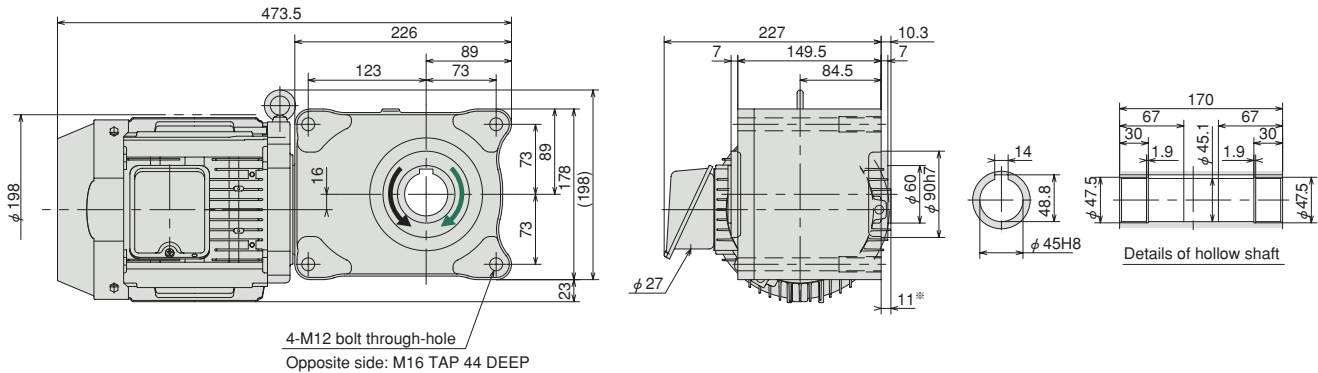
## M-14 1.5kW HMTA150-45H5~80

The direction of rotation of the output shaft is based on direction of rotation A shown on page 189. 1/5~1/30 ↺, 1/40~1/50 ↻

Reduction ratio : 5, 10, 15, 20, 25, 30, 40, 50, 60, 80

Approx. weight : 29.0kg

Reference page : Specification Chart→P133 Options→P184



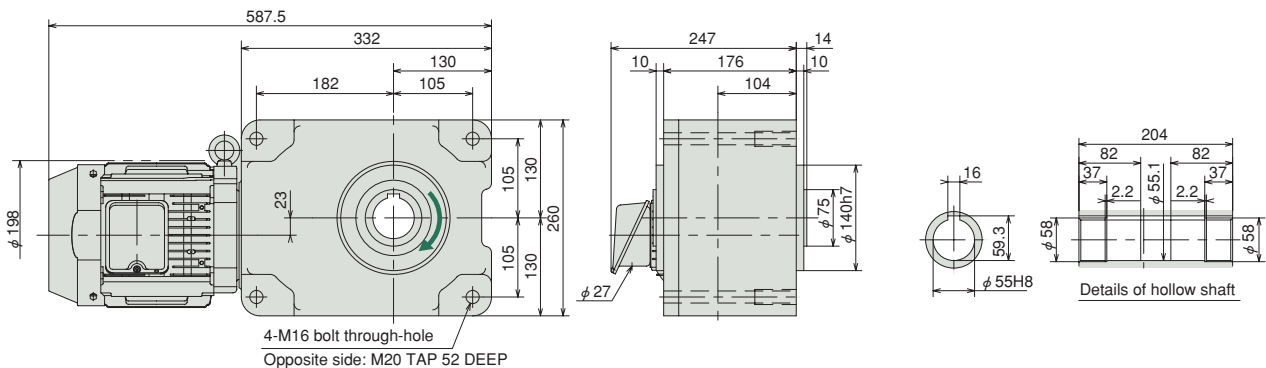
## M-15 1.5kW HMTA150-55H100~200

The direction of rotation of the output shaft is based on direction of rotation A shown on page 189.

Reduction ratio : 100, 120, 160, 200

Approx. weight : 57.0kg

Reference page : Specification Chart→P133 Options→P184



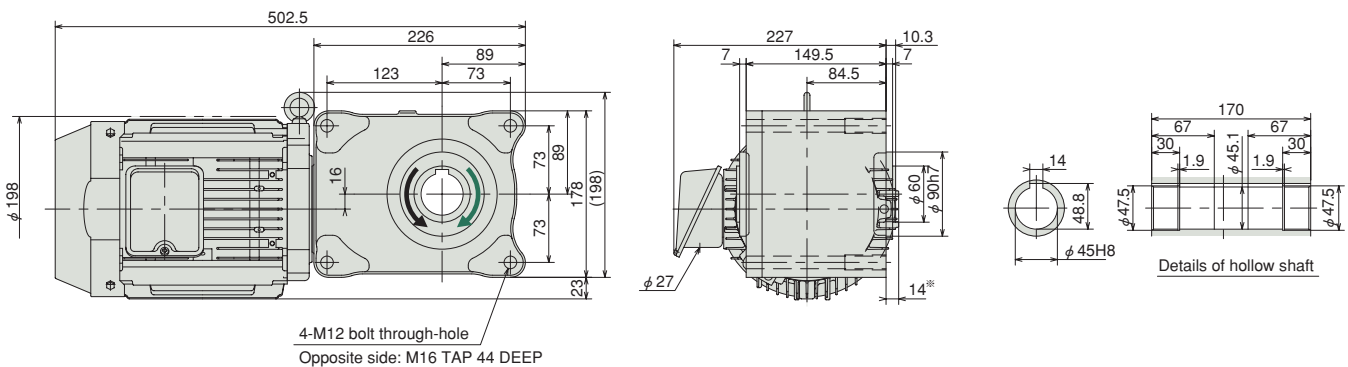
## M-16 2.2kW HMTA220-45H5~60

The direction of rotation of the output shaft is based on direction of rotation A shown on page 189. 1/5~1/20 ↺, 1/25~1/60 ↻

Reduction ratio : 5, 10, 15, 20, 25, 30, 40, 50, 60

Approx. weight : 34.0kg

Reference page : Specification Chart→P133 Options→P184



Note) The dimension marked with \* indicates that that part of the motor protrudes from the mounting surface.

Outline Dimensions

H  
M-14  
M-15  
M-16  
  
1.5  
2.2

# Hypoid Motor TA Series Outline Dimensions

Hollow shaft type 2.2 · 3.7 · 5.5 kW · Non-brake type

HYPOID MOTOR TA Outline Dimensions ● Non-brake/Hollow

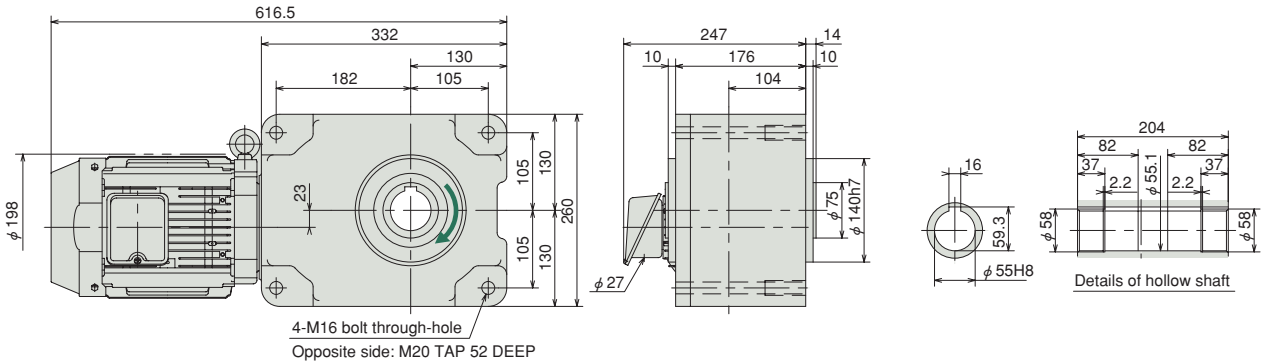
## M-17 2.2kW HMTA220-55H80~120

The direction of rotation of the output shaft is based on direction of rotation A shown on page 189.

Reduction ratio : 80, 100, 120

Approx. weight : 61.0kg

Reference page : Specification Chart→P133 Options→P184



## M-18 3.7kW HMTA370-55H5~60

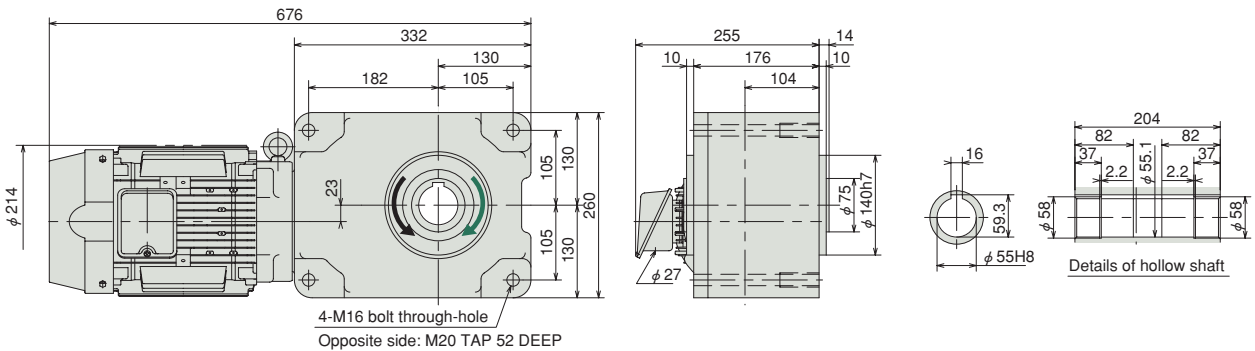
The direction of rotation of the output shaft is based on direction of rotation A shown on page 189.

1/5~1/20 ↺、1/25~1/60 ↻

Reduction ratio : 5, 10, 15, 20, 25, 30, 40, 50, 60

Approx. weight : 70.0kg

Reference page : Specification Chart→P133 Options→P184



## M-19 5.5kW HMTA550-55H5~40

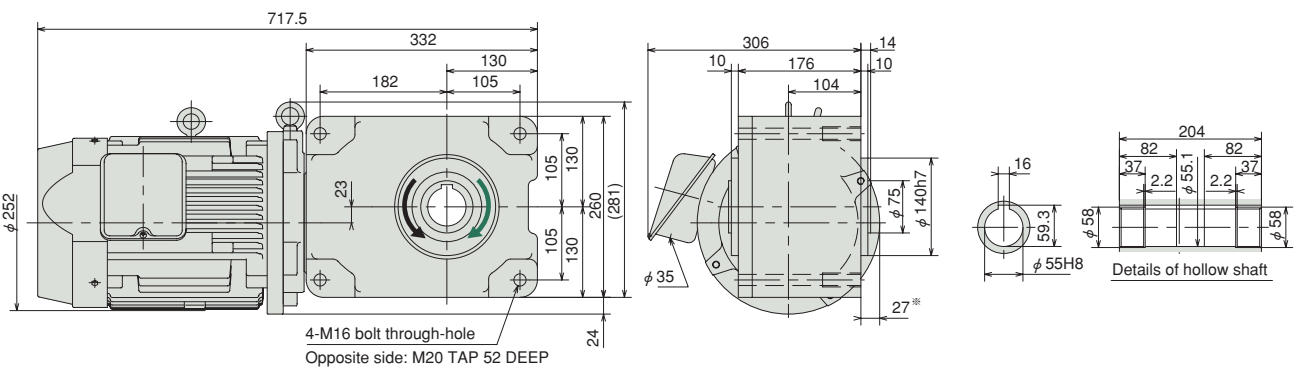
The direction of rotation of the output shaft is based on direction of rotation A shown on page 189.

1/5~1/20 ↺、1/25~1/40 ↻

Reduction ratio : 5, 10, 15, 20, 25, 30, 40

Approx. weight : 91.0g

Reference page : Specification Chart→P133 Options→P184



Note) The dimension marked with \* indicates that part of the motor protrudes from the mounting surface.

# Hypoid Motor TA Series Outline Dimensions

Hollow shaft type 100 W · Non-brake type

HYPOID MOTOR TA Outline Dimensions ● Non-brake/Hollow

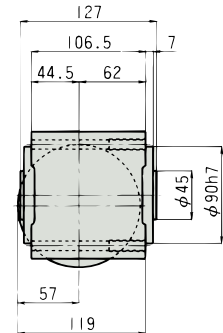
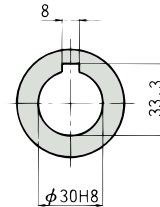
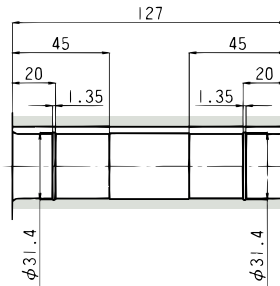
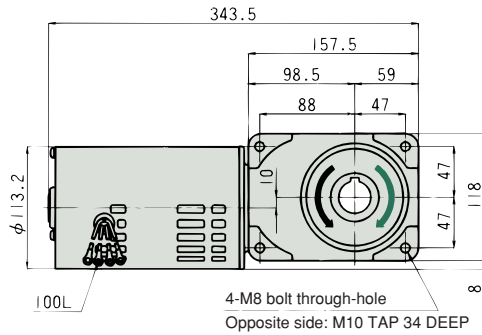
## M-20 100W HMTA100-30H5~200

The direction of rotation of the output shaft is based on direction of rotation A shown on page 189. 1/5~1/60 ↺, 1/80~1/200 ↻

Reduction ratio : 5, 10, 15, 20, 25, 30, 40, 50, 60, 80, 100, 120, 160, 200

Approx. weight : 9.8kg

Reference page : Specification Chart→P134 Options→P184



Details of hollow output shaft

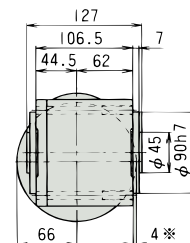
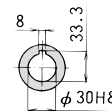
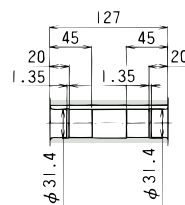
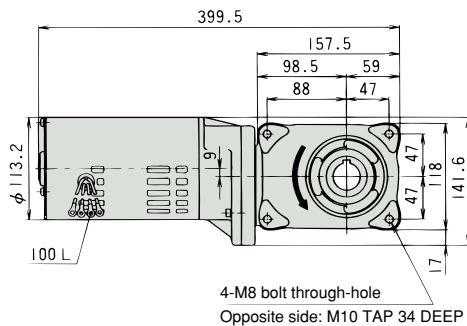
## M-21 100W HMTA100-30H300~480

The direction of rotation of the output shaft is based on direction of rotation A shown on page 189.

Reduction ratio : 300, 360, 480

Approx. weight : 11.9kg

Reference page : Specification Chart→P134 Options→P184



Details of hollow output shaft

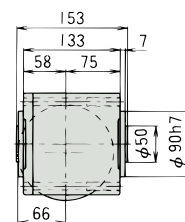
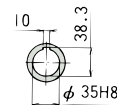
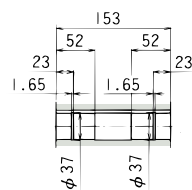
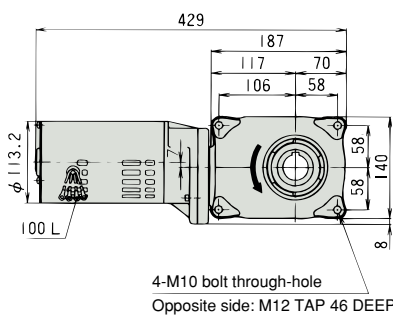
## M-22 100W HMTA100-35H600~1200

The direction of rotation of the output shaft is based on direction of rotation A shown on page 189.

Reduction ratio : 600, 720, 960, 1200

Approx. weight : 14.8kg

Reference page : Specification Chart→P134 Options→P184



Details of hollow output shaft

Note) The dimension marked with \* indicates that that part of the motor protrudes from the mounting surface.

Outline Dimensions

H

M-20  
M-21  
M-22

100

# Hypoid Motor TA Series Outline Dimensions

Hollow shaft type 200 W · Non-brake type

HYPOID MOTOR TA Outline Dimensions ● Non-brake/Hollow

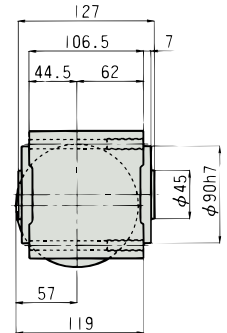
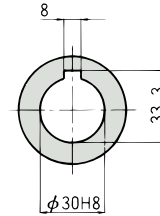
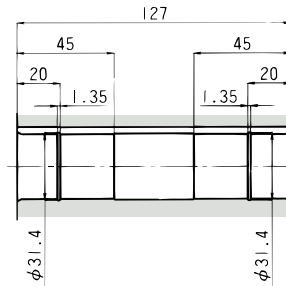
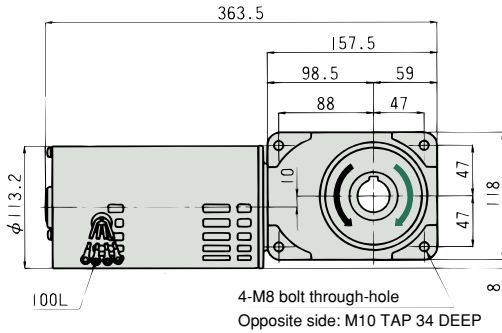
## M-23 200W HMTA200-30H5~200

The direction of rotation of the output shaft is based on direction of rotation A shown on page 189. 1/5~1/60 ↺、1/80~1/200 ↻

Reduction ratio : 5, 10, 15, 20, 25, 30, 40, 50, 60, 80, 100, 120, 160, 200

Approx. weight : 11.4kg

Reference page : Specification Chart→P134 Options→P184



Details of hollow output shaft

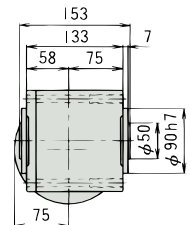
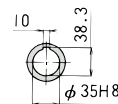
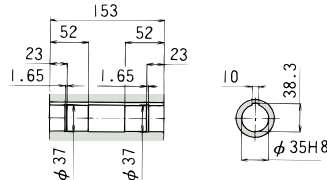
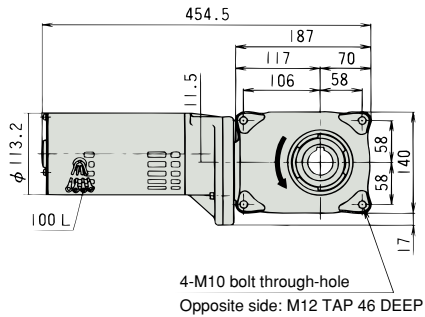
## M-24 200W HMTA200-35H300~480

The direction of rotation of the output shaft is based on direction of rotation A shown on page 189.

Reduction ratio : 300, 360, 480

Approx. weight : 16.6kg

Reference page : Specification Chart→P134 Options→P184



Details of hollow output shaft

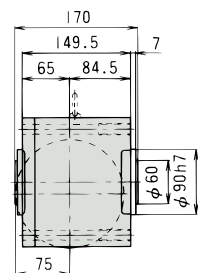
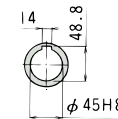
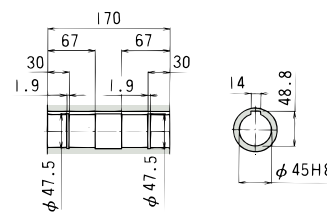
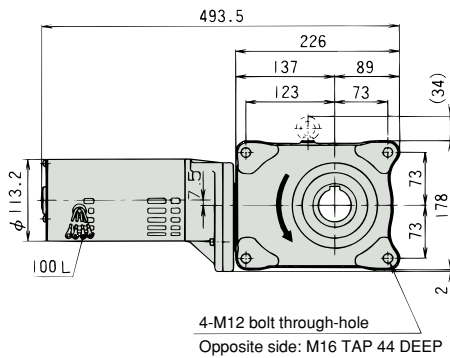
## M-25 200W HMTA200-45H600~1200

The direction of rotation of the output shaft is based on direction of rotation A shown on page 189.

Reduction ratio : 600, 720, 960, 1200

Approx. weight : 23.9kg

Reference page : Specification Chart→P134 Options→P184



Details of hollow output shaft

Outline Dimensions

H  
M-23  
M-24  
M-25

200



# Hypoid Motor TA Series Outline Dimensions

Foot mount type 0.1 kW · Non-brake type

HYPOID MOTOR TA Outline Dimensions ● Non-brake/Foot mount

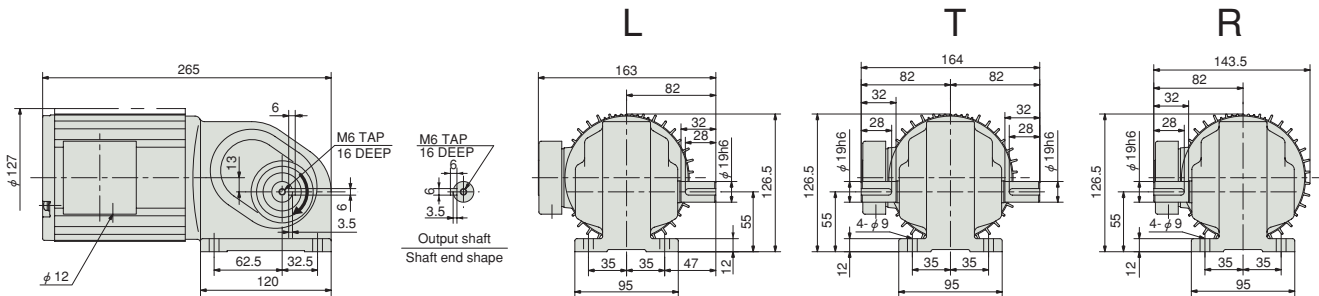
## M-26 0.1kW HMTA010-19L5~50 $\frac{L}{R}$

The direction of rotation of the output shaft is based on direction of rotation A shown on page 189.

Reduction ratio : 5, 10, 15, 20, 25, 30, 40, 50

Approx. weight : 6.0kg

Reference page : Specification Chart→P131



## M-27 0.1kW HMTA010-24L60~200 $\frac{L}{R}$

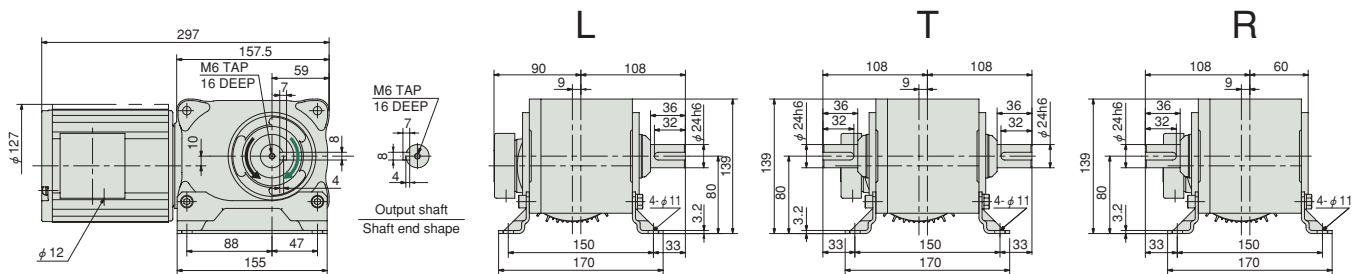
The direction of rotation of the output shaft is based on direction of rotation A shown on page 189.

1/60  $\curvearrowright$ 、1/80~1/200  $\curvearrowright$

Reduction ratio : 60, 80, 100, 120, 160, 200

Approx. weight : 10.8kg

Reference page : Specification Chart→P131



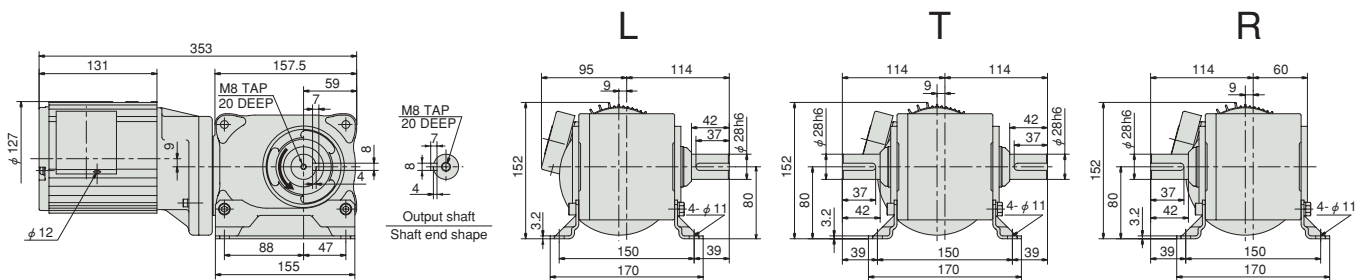
## M-28 0.1kW HMTA010-28L300~480 $\frac{L}{R}$

The direction of rotation of the output shaft is based on direction of rotation A shown on page 189.

Reduction ratio : 300, 360, 480

Approx. weight : 13.0kg

Reference page : Specification Chart→P131



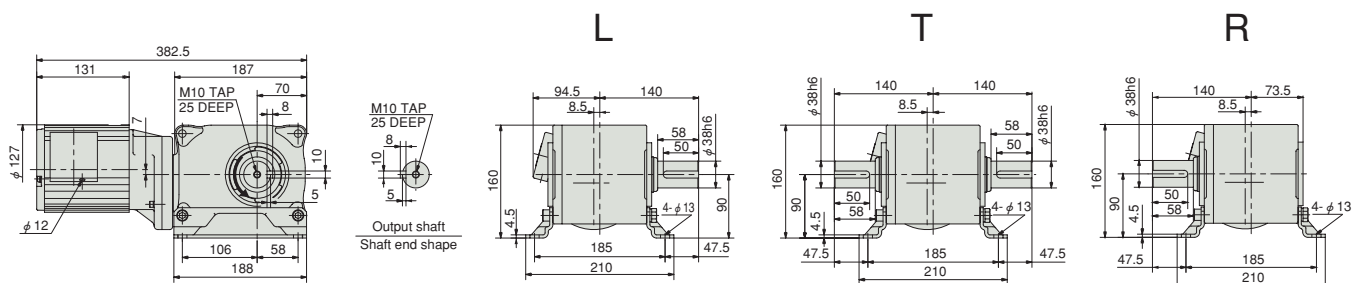
## M-29 0.1kW HMTA010-38L600~1200 $\frac{L}{R}$

The direction of rotation of the output shaft is based on direction of rotation A shown on page 189.

Reduction ratio : 600, 720, 960, 1200

Approx. weight : 16.8kg

Reference page : Specification Chart→P131



Note) For output shaft arrangement "T," the phases of the right and left output shaft key ways are not necessarily aligned precisely.

# Hypoid Motor TA Series Outline Dimensions

Foot mount type 0.2 kW · Non-brake type

HYPOID MOTOR TA Outline Dimensions ● Non-brake/Foot mount

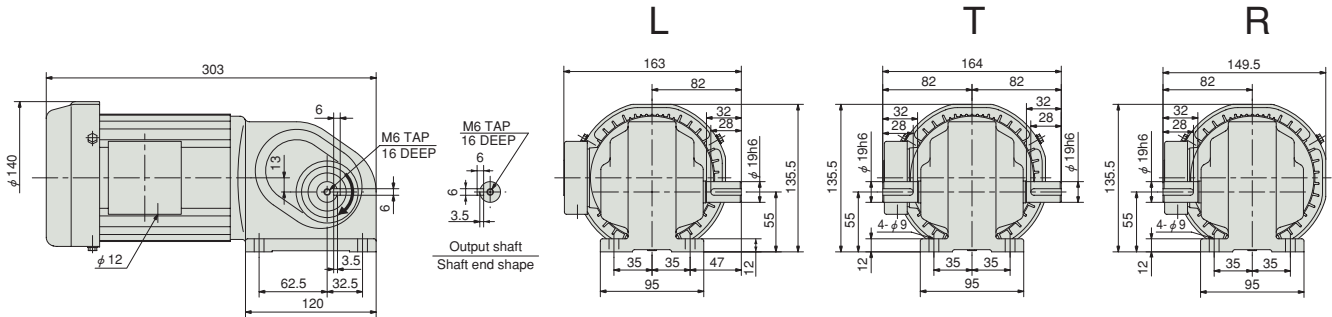
## M-30 0.2kW HMTA020-19L5~50 $\frac{L}{R}$

The direction of rotation of the output shaft is based on direction of rotation A shown on page 189.

Reduction ratio : 5, 10, 15, 20, 25, 30, 40, 50

Approx. weight : 6.0kg

Reference page : Specification Chart→P131



## M-31 0.2kW HMTA020-28L60~200 $\frac{L}{R}$

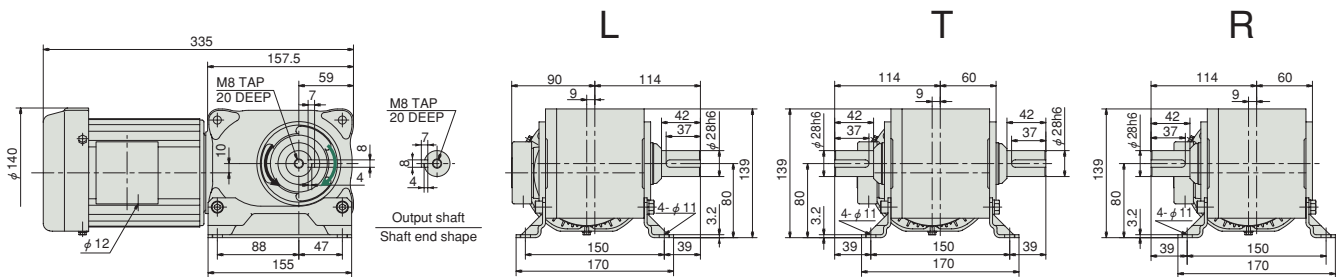
The direction of rotation of the output shaft is based on direction of rotation A shown on page 189.

1/60  $\curvearrowright$ , 1/80~1/200  $\curvearrowright$

Reduction ratio : 60, 80, 100, 120, 160, 200

Approx. weight : 10.4kg

Reference page : Specification Chart→P131



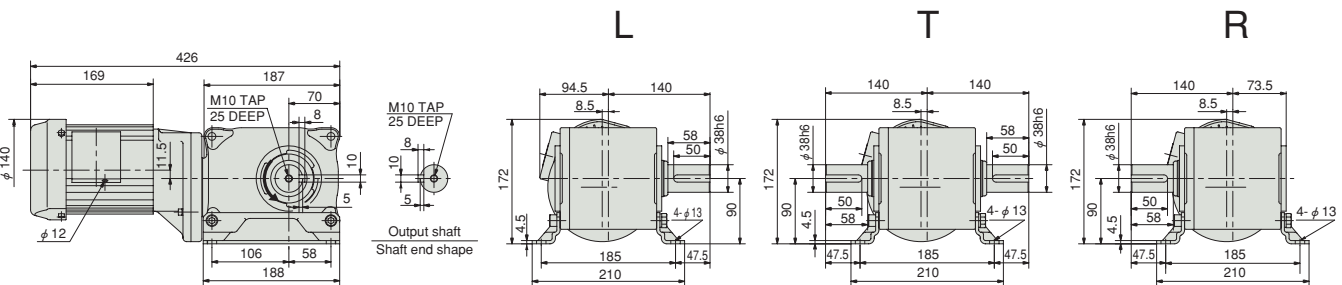
## M-32 0.2kW HMTA020-38L300~480 $\frac{L}{R}$

The direction of rotation of the output shaft is based on direction of rotation A shown on page 189.

Reduction ratio : 300, 360, 480

Approx. weight : 16.8kg

Reference page : Specification Chart→P131



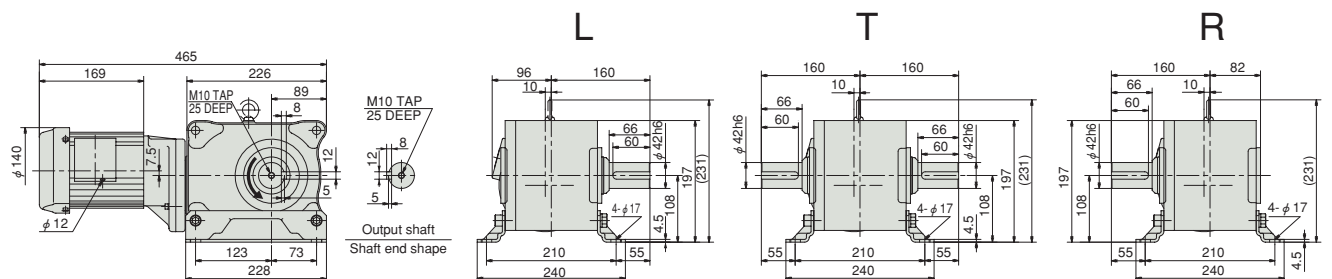
## M-33 0.2kW HMTA020-42L600~1200 $\frac{L}{R}$

The direction of rotation of the output shaft is based on direction of rotation A shown on page 189.

Reduction ratio : 600, 720, 960, 1200

Approx. weight : 26.3kg

Reference page : Specification Chart→P131



Note) For output shaft arrangement "T," the phases of the right and left output shaft key ways are not necessarily aligned precisely.

# Hypoid Motor TA Series Outline Dimensions

Foot mount type 0.4 kW · Non-brake type

HYPOID MOTOR TA Outline Dimensions ● Non-brake/Foot mount

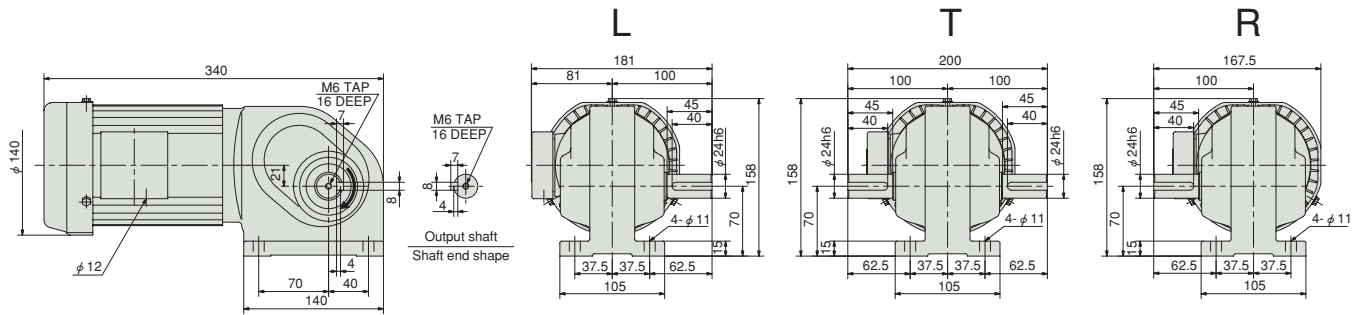
## M-34 0.4kW HMTA040-24L5~50 $\frac{L}{R}$

The direction of rotation of the output shaft is based on direction of rotation A shown on page 189.

Reduction ratio : 5, 10, 15, 20, 25, 30, 40, 50

Approx. weight : 8.2kg

Reference page : Specification Chart→P132



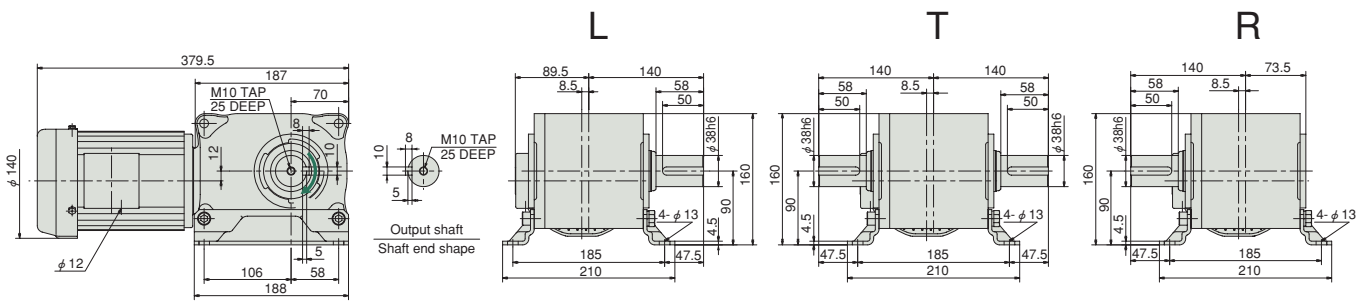
## M-35 0.4kW HMTA040-38L60~200 $\frac{L}{R}$

The direction of rotation of the output shaft is based on direction of rotation A shown on page 189.

Reduction ratio : 60, 80, 100, 120, 160, 200

Approx. weight : 16.8kg

Reference page : Specification Chart→P132



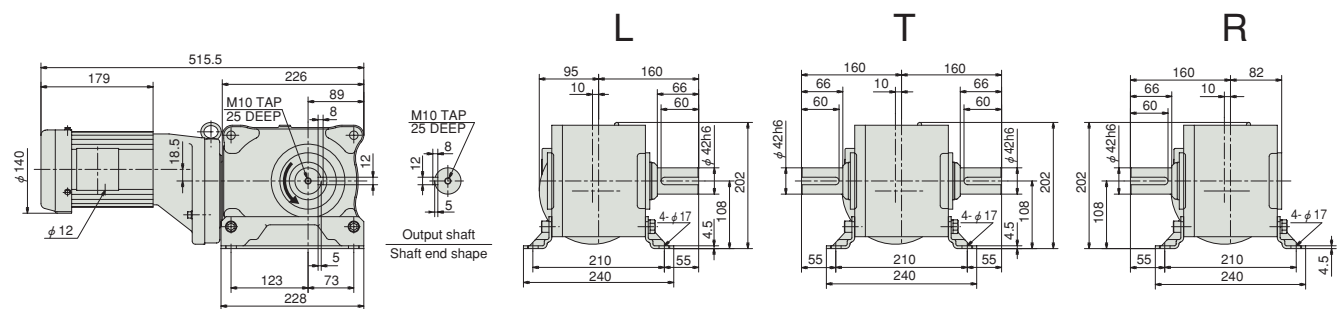
## M-36 0.4kW HMTA040-42L300~480 $\frac{L}{R}$

The direction of rotation of the output shaft is based on direction of rotation A shown on page 189.

Reduction ratio : 300, 360, 480

Approx. weight : 31.7kg

Reference page : Specification Chart→P132



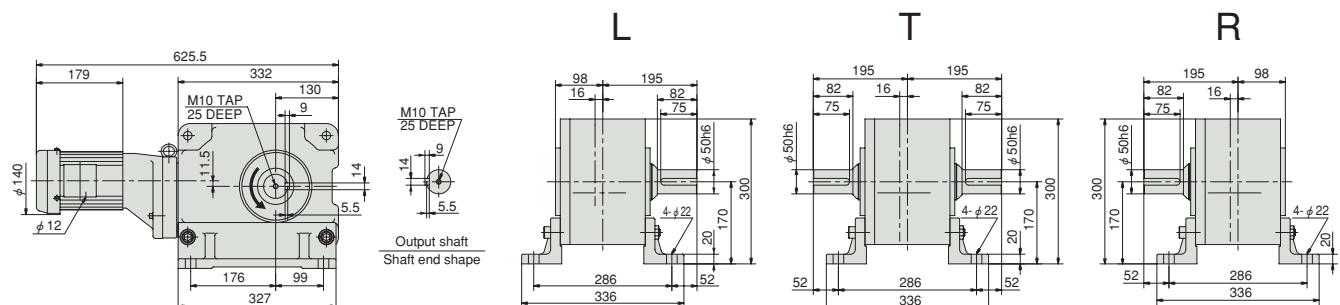
## M-37 0.4kW HMTA040-50L600~1200 $\frac{L}{R}$

The direction of rotation of the output shaft is based on direction of rotation A shown on page 189.

Reduction ratio : 600, 720, 960, 1200

Approx. weight : 75.8kg

Reference page : Specification Chart→P132



Note) For output shaft arrangement "T," the phases of the right and left output shaft key ways are not necessarily aligned precisely.

# Hypoid Motor TA Series Outline Dimensions

Foot mount type 0.75 kW · Non-brake type

HYPOID MOTOR TA Outline Dimensions ● Non-brake/Foot mount

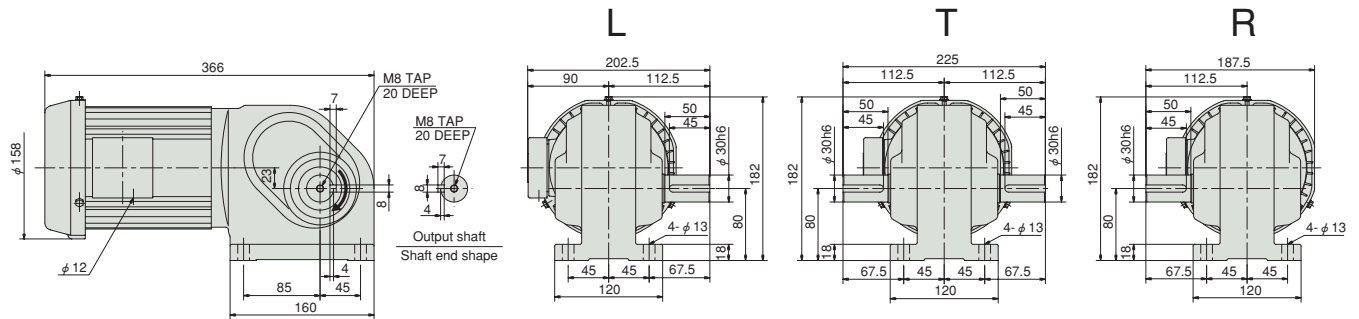
## M-38 0.75kW HMTA075-30L5~50 $\frac{L}{R}$

The direction of rotation of the output shaft is based on direction of rotation A shown on page 189.

Reduction ratio : 5, 10, 15, 20, 25, 30, 40, 50

Approx. weight : 16.0kg

Reference page : Specification Chart→P132



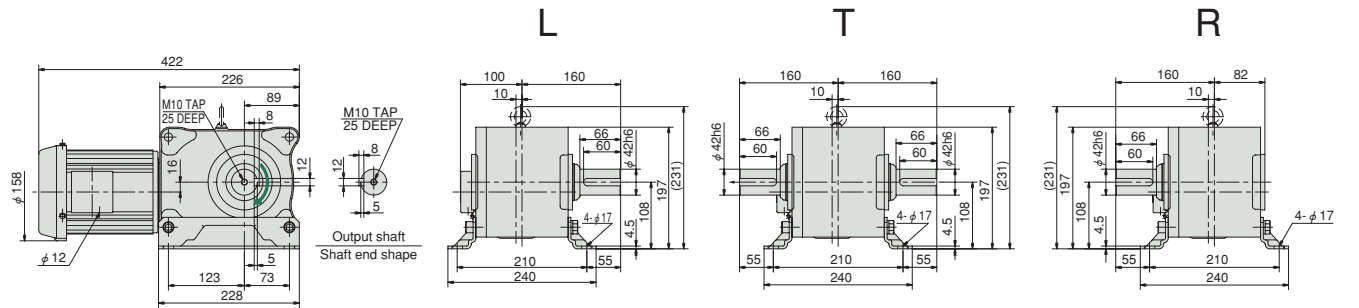
## M-39 0.75kW HMTA075-42L60~200 $\frac{L}{R}$

The direction of rotation of the output shaft is based on direction of rotation A shown on page 189.

Reduction ratio : 60, 80, 100, 120, 160, 200

Approx. weight : 28.5kg

Reference page : Specification Chart→P132



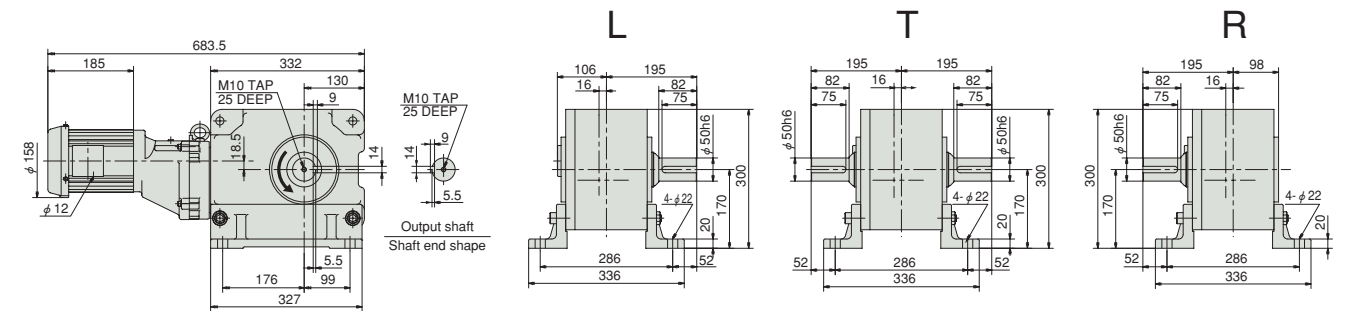
## M-40 0.75kW HMTA075-50L300~480 $\frac{L}{R}$

The direction of rotation of the output shaft is based on direction of rotation A shown on page 189.

Reduction ratio : 300, 360, 480

Approx. weight : 84.5kg

Reference page : Specification Chart→P132



Note) For output shaft arrangement "T," the phases of the right and left output shaft key ways are not necessarily aligned precisely.

# Hypooid Motor TA Series Outline Dimensions

Foot mount type 1.5 · 2.2 kW · Non-brake type

HYPOID MOTOR TA Outline Dimensions ● Non-brake/Foot mount

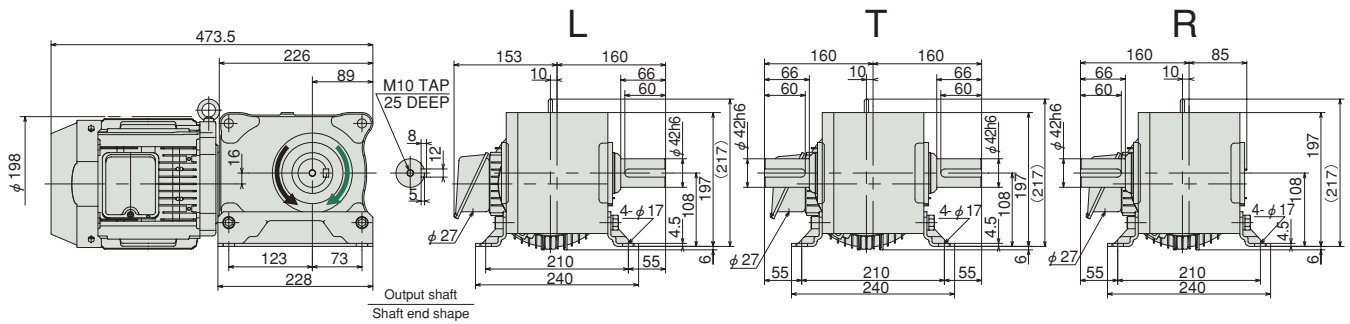
## M-41 1.5kW HMTA150-42L5~80 $\frac{L}{R}$

The direction of rotation of the output shaft is based on direction of rotation A shown on page 189. 1/5~1/30 (↺), 1/40~1/80 (↻)

Reduction ratio : 5, 10, 15, 20, 25, 30, 40, 50, 60, 80

Approx. weight : 35.0kg

Reference page : Specification Chart→P133



Part of the motor protrudes from the foot undersurface.

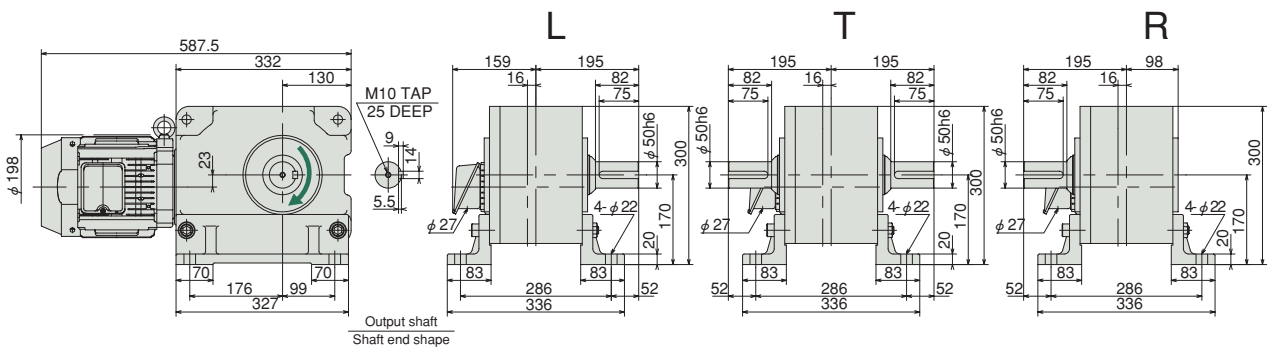
## M-42 1.5kW HMTA150-50L100~200 $\frac{L}{R}$

The direction of rotation of the output shaft is based on direction of rotation A shown on page 189.

Reduction ratio : 100, 120, 160, 200

Approx. weight : 81.0kg

Reference page : Specification Chart→P133



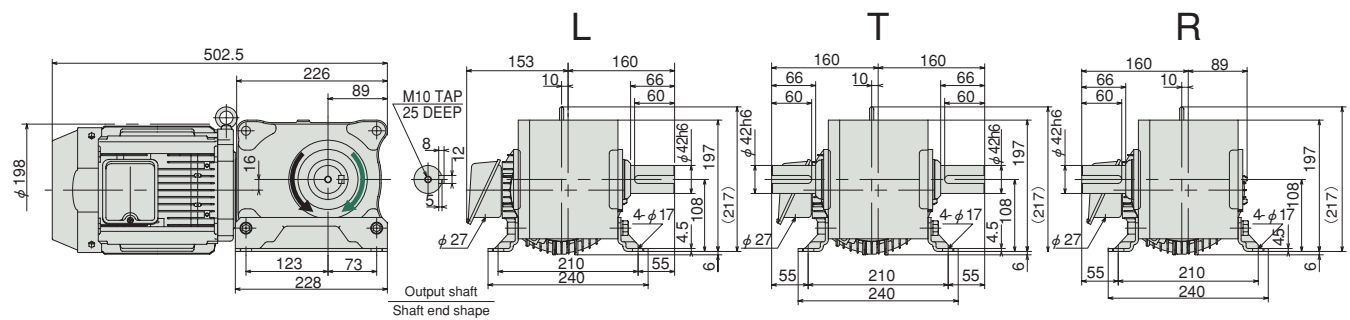
## M-43 2.2kW HMTA220-42L5~60 $\frac{L}{R}$

The direction of rotation of the output shaft is based on direction of rotation A shown on page 189. 1/5~1/20 (↺), 1/25~1/60 (↻)

Reduction ratio : 5, 10, 15, 20, 25, 30, 40, 50, 60

Approx. weight : 39.0kg

Reference page : Specification Chart→P133



Part of the motor protrudes from the foot undersurface.

Note) For output shaft arrangement "T," the phases of the right and left output shaft key ways are not necessarily aligned precisely.  
 Note) Part of the motor protrudes from the foot undersurface in drawings M-41 and M-43. It is possible to manufacture a motor without protrusion, in which case some dimensions such as the height changes. Please contact us for more information.

Outline Dimensions

L  
M-41  
M-42  
M-43  
1.5  
2.2

# Hypooid Motor TA Series Outline Dimensions

Foot mount type 2.2 · 3.7 · 5.5 kW · Non-brake type

HYPOID MOTOR TA Outline Dimensions ● Non-brake/Foot mount

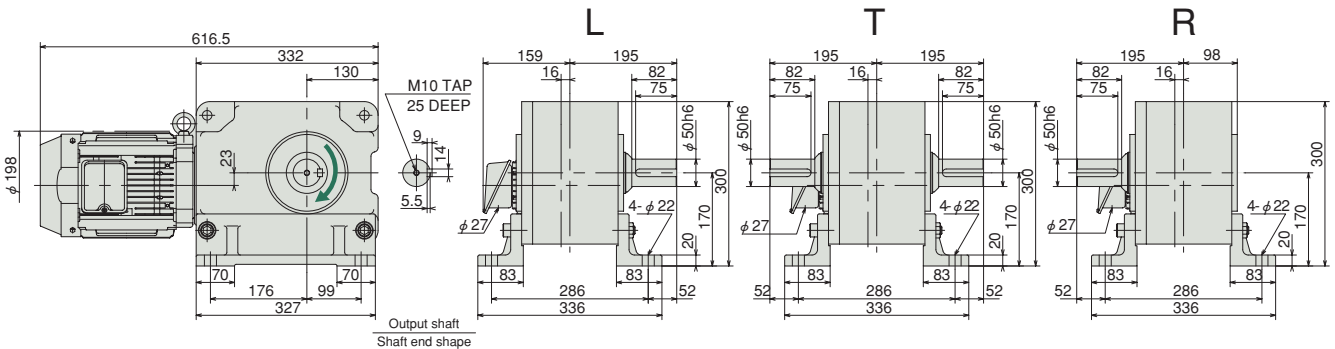
## M-44 2.2kW HMTA220-50L80~120 $\frac{L}{R}$

The direction of rotation of the output shaft is based on direction of rotation A shown on page 189.

Reduction ratio : 80, 100, 120

Approx. weight : 84.0kg

Reference page : Specification Chart→P133



## M-45 3.7kW HMTA370-50L5~60 $\frac{L}{R}$

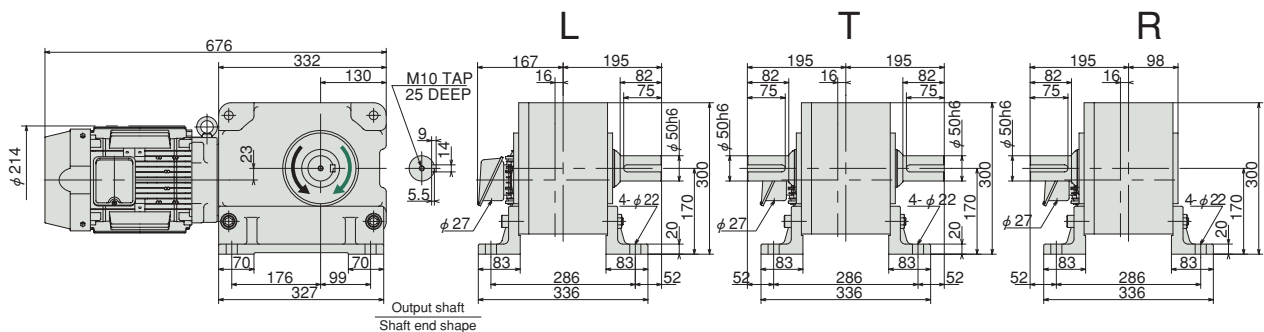
The direction of rotation of the output shaft is based on direction of rotation A shown on page 189.

$1/5 \sim 1/20$  ↺,  $1/25 \sim 1/60$  ↻

Reduction ratio : 5, 10, 15, 20, 25, 30, 40, 50, 60

Approx. weight : 93.0kg

Reference page : Specification Chart→P133



## M-46 5.5kW HMTA550-50L5~40 $\frac{L}{R}$

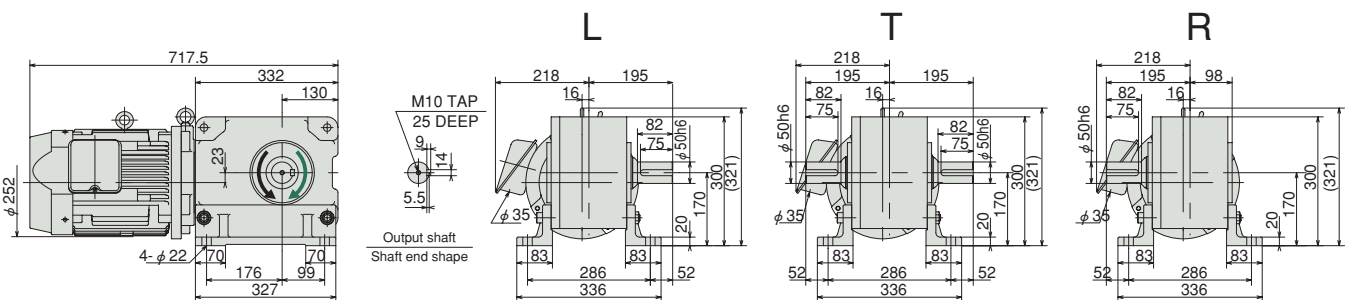
The direction of rotation of the output shaft is based on direction of rotation A shown on page 189.

$1/5 \sim 1/20$  ↺,  $1/25 \sim 1/40$  ↻

Reduction ratio : 5, 10, 15, 20, 25, 30, 40

Approx. weight : 114.0kg

Reference page : Specification Chart→P133



Note) For output shaft arrangement "T," the phases of the right and left output shaft key ways are not necessarily aligned precisely.

# Hypoid Motor TA Series Outline Dimensions

Foot mount type 100 W · Non-brake type

HYPOID MOTOR TA Outline Dimensions ● Non-brake/Foot mount

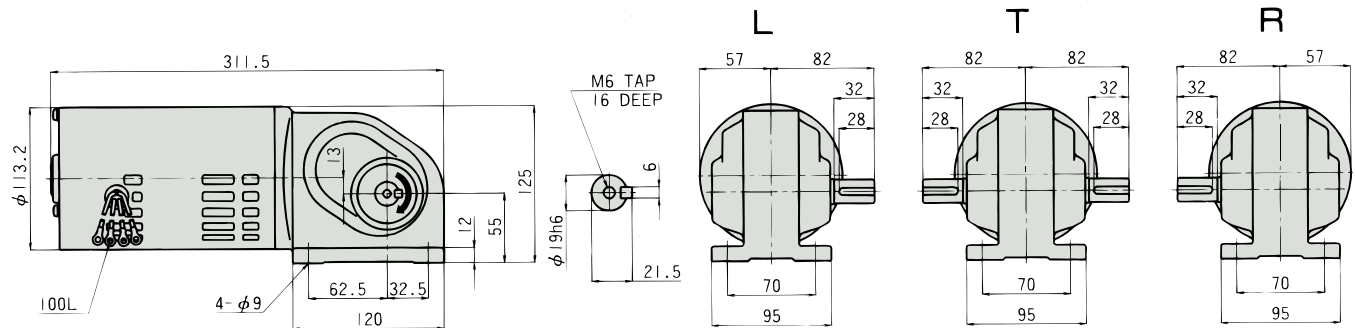
## M-47 100W HMTA100-19L5~50 $\frac{L}{R}$

The direction of rotation of the output shaft is based on direction of rotation A shown on page 189.

Reduction ratio : 5, 10, 15, 20, 25, 30, 40, 50

Approx. weight : 6.6kg

Reference page : Specification Chart→P134



## M-48 100W HMTA100-24L60~200 $\frac{L}{R}$

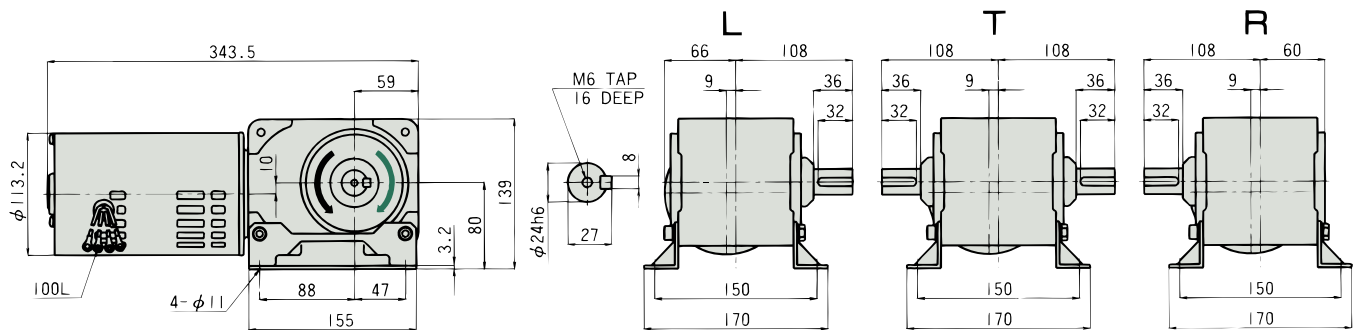
The direction of rotation of the output shaft is based on direction of rotation A shown on page 189.

1/60  $\curvearrowright$ , 1/80~1/200  $\curvearrowright$

Reduction ratio : 60, 80, 100, 120, 160, 200

Approx. weight : 11.4kg

Reference page : Specification Chart→P134



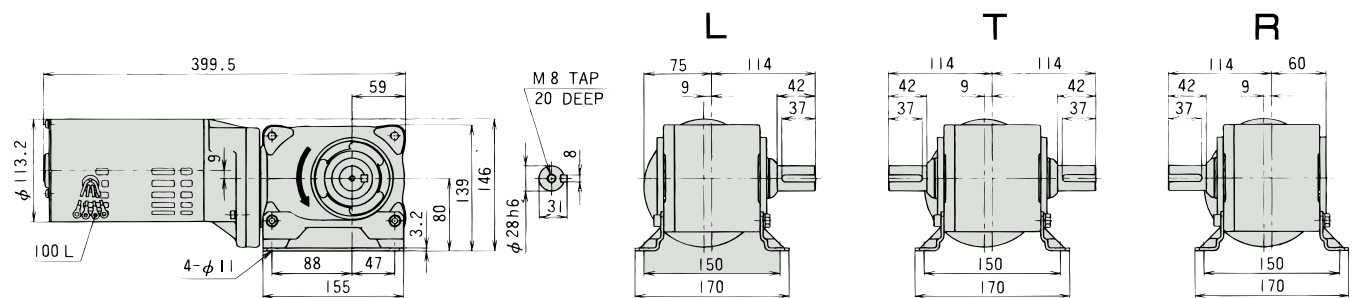
## M-49 100W HMTA100-28L300~480 $\frac{L}{R}$

The direction of rotation of the output shaft is based on direction of rotation A shown on page 189.

Reduction ratio : 300, 360, 480

Approx. weight : 13.8kg

Reference page : Specification Chart→P134



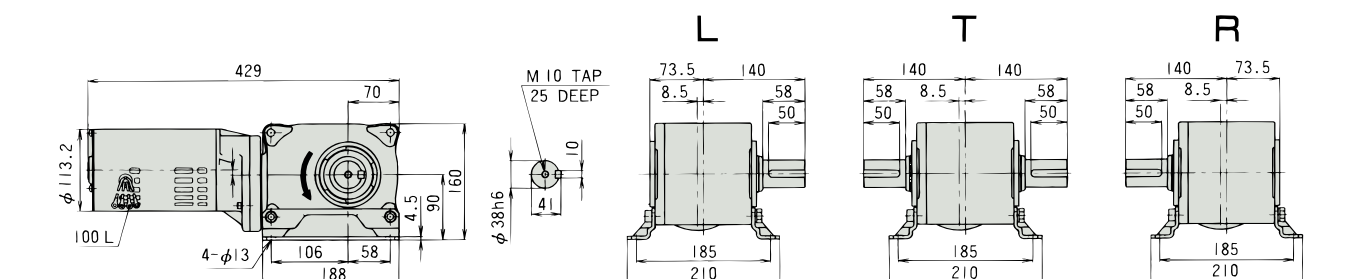
## M-50 100W HMTA100-38L600~1200 $\frac{L}{R}$

The direction of rotation of the output shaft is based on direction of rotation A shown on page 189.

Reduction ratio : 600, 720, 960, 1200

Approx. weight : 17.6kg

Reference page : Specification Chart→P134



Note) For output shaft arrangement "T," the phases of the right and left output shaft key ways are not necessarily aligned precisely.

# Hypoid Motor TA Series Outline Dimensions

Foot mount type 200 W · Non-brake type

HYPOID MOTOR TA Outline Dimensions ● Non-brake/Foot mount

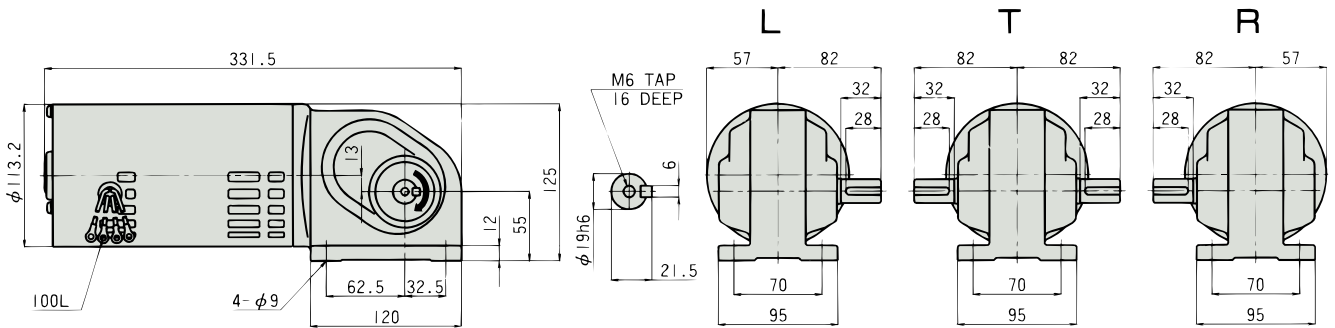
## M-51 200W HMTA200-19L5~50 $\frac{L}{R}$

The direction of rotation of the output shaft is based on direction of rotation A shown on page 189.

Reduction ratio : 5, 10, 15, 20, 25, 30, 40, 50

Approx. weight : 8.6kg

Reference page : Specification Chart→P134



## M-52 200W HMTA200-28L60~200 $\frac{L}{R}$

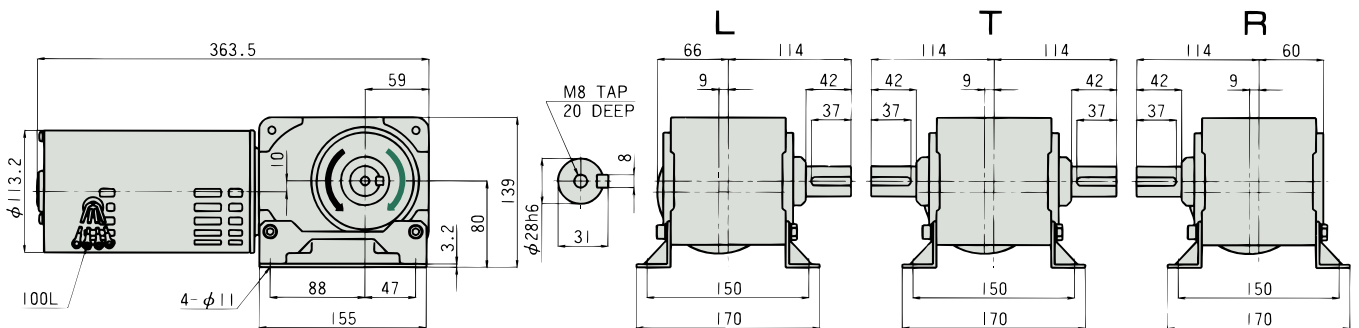
The direction of rotation of the output shaft is based on direction of rotation A shown on page 189.

1/60  $\curvearrowright$ , 1/80~1/200  $\curvearrowright$

Reduction ratio : 60, 80, 100, 120, 160, 200

Approx. weight : 13.0kg

Reference page : Specification Chart→P134



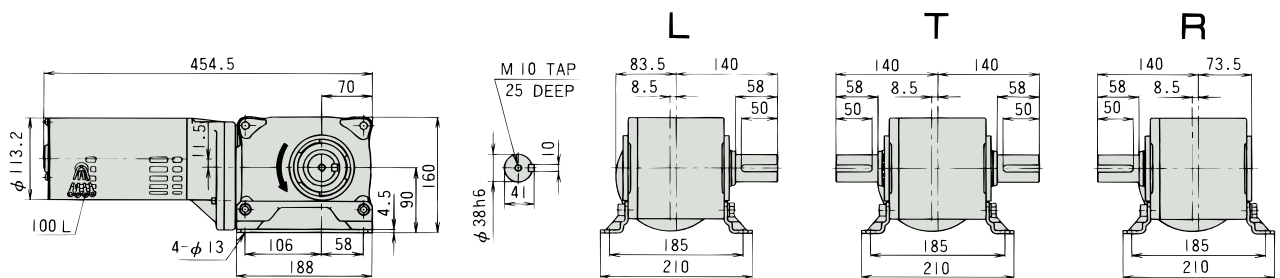
## M-53 200W HMTA200-38L300~480 $\frac{L}{R}$

The direction of rotation of the output shaft is based on direction of rotation A shown on page 189.

Reduction ratio : 300, 360, 480

Approx. weight : 19.4kg

Reference page : Specification Chart→P134



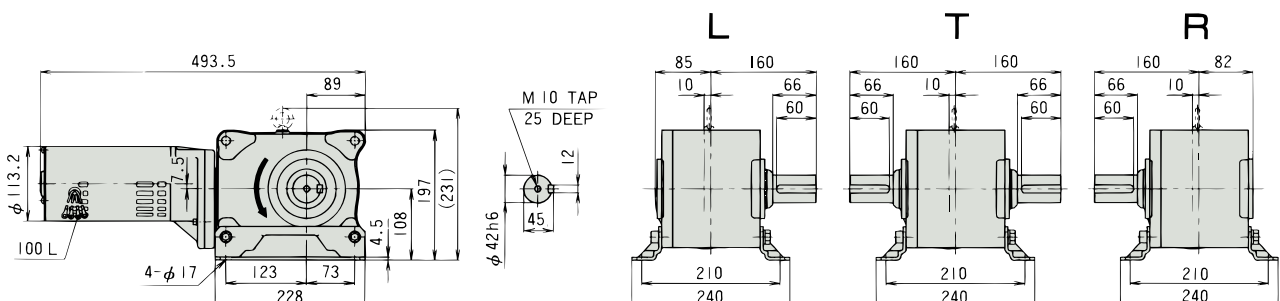
## M-54 200W HMTA200-42L600~1200 $\frac{L}{R}$

The direction of rotation of the output shaft is based on direction of rotation A shown on page 189.

Reduction ratio : 600, 720, 960, 1200

Approx. weight : 29.4kg

Reference page : Specification Chart→P134



Note) For output shaft arrangement "T," the phases of the right and left output shaft key ways are not necessarily aligned precisely.



# Hypoid Motor TA Series Outline Dimensions

Face mount type 0.1 kW · Non-brake type

HYPOID MOTOR TA Outline Dimensions ● Non-brake/Face mount

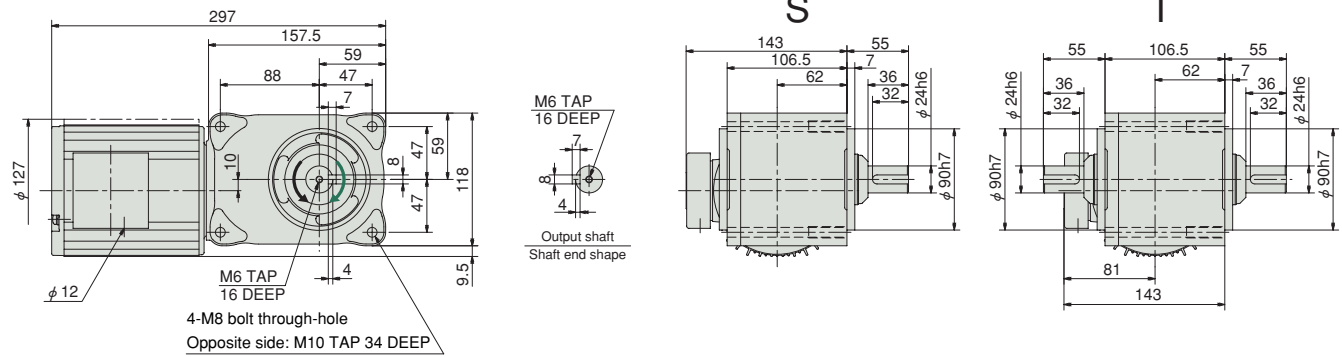
## M-55 0.1kW HMTA010-24U5~200 S

The direction of rotation of the output shaft is based on direction of rotation A shown on page 189. 1/5~1/60 ↺、1/80~1/200 ↻

Reduction ratio : 5, 10, 15, 20, 25, 30, 40, 50, 60, 80, 100, 120, 160, 200

Approx. weight : 10.0kg

Reference page : Specification Chart→P131



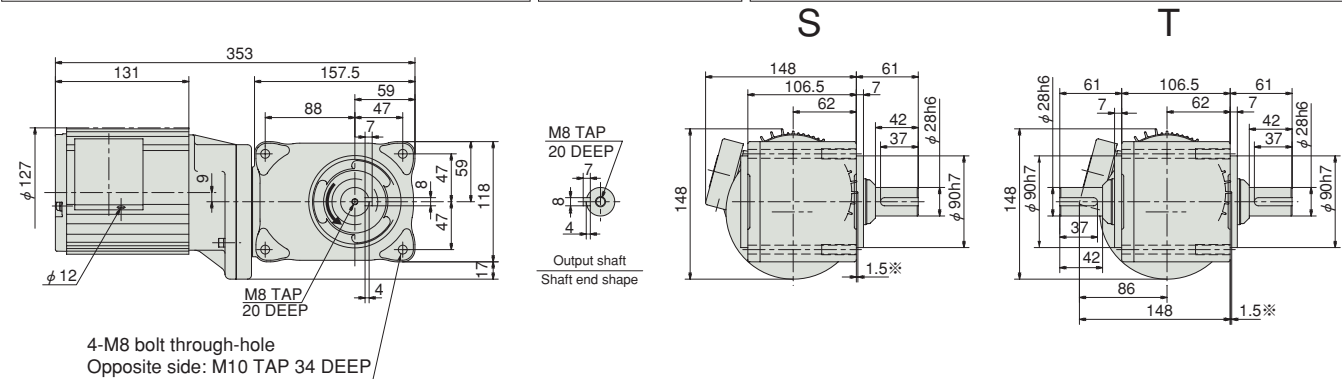
## M-56 0.1kW HMTA010-28U300~480 S

The direction of rotation of the output shaft is based on direction of rotation A shown on page 189.

Reduction ratio : 300, 360, 480

Approx. weight : 12.1kg

Reference page : Specification Chart→P131



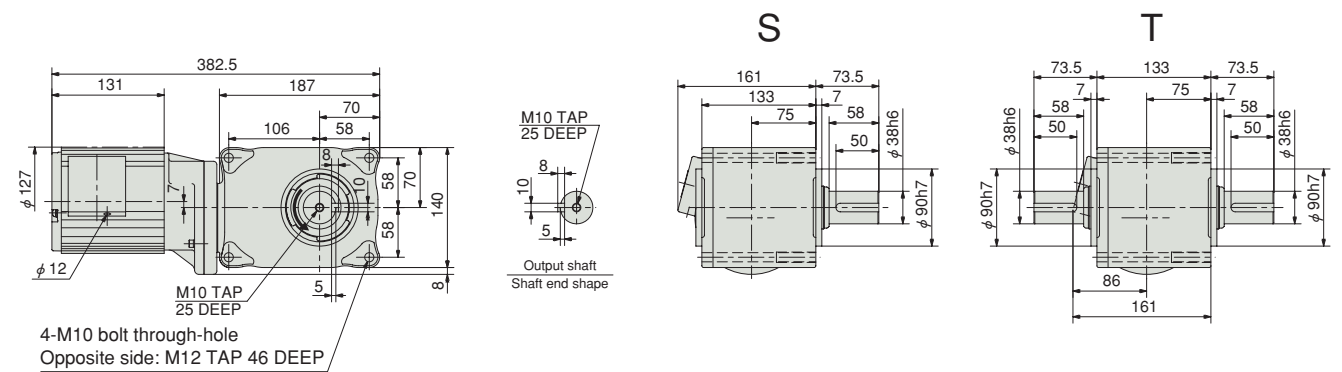
## M-57 0.1kW HMTA010-38U600~1200 S

The direction of rotation of the output shaft is based on direction of rotation A shown on page 189.

Reduction ratio : 600, 720, 960, 1200

Approx. weight : 15.8kg

Reference page : Specification Chart→P131



Note) The dimension marked with \* indicates that part of the motor protrudes from the mounting surface.

Note) For output shaft arrangement "T," the phases of the right and left output shaft key ways are not necessarily aligned precisely.

Outline Dimensions

U  
M-55  
M-56  
M-57

0.1

# Hypoid Motor TA Series Outline Dimensions

Face mount type 0.2 kW · Non-brake type

HYPOID MOTOR TA Outline Dimensions ● Non-brake/Face mount

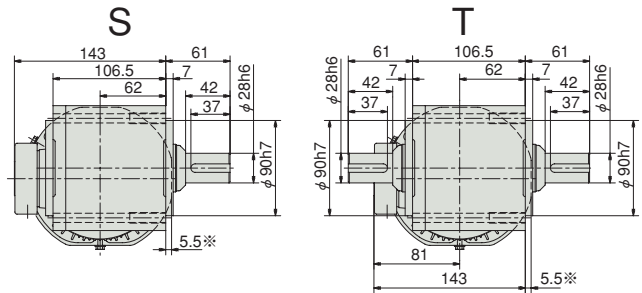
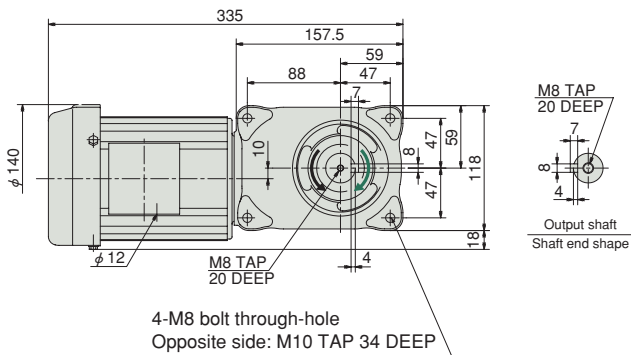
## M-58 0.2kW HMTA020-28U5~200 ㊦

The direction of rotation of the output shaft is based on direction of rotation A shown on page 189. 1/5~1/60 (↺), 1/80~1/200 (↻)

Reduction ratio : 5, 10, 15, 20, 25, 30, 40, 50, 60, 80, 100, 120, 160, 200

Approx. weight : 9.6kg

Reference page : Specification Chart→P131



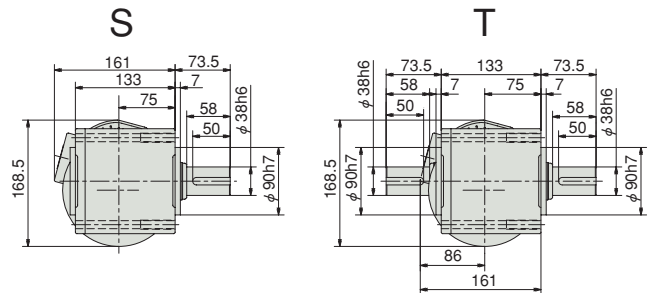
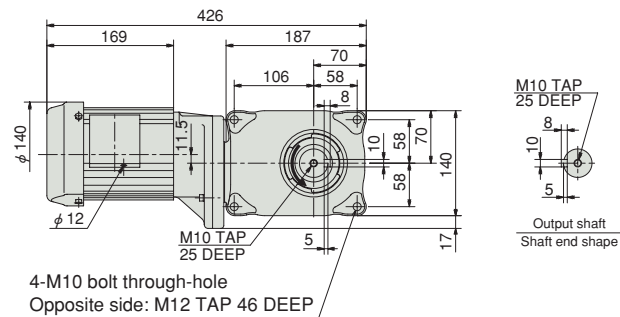
## M-59 0.2kW HMTA020-38U300~480 ㊦

The direction of rotation of the output shaft is based on direction of rotation A shown on page 189.

Reduction ratio : 300, 360, 480

Approx. weight : 15.8kg

Reference page : Specification Chart→P131



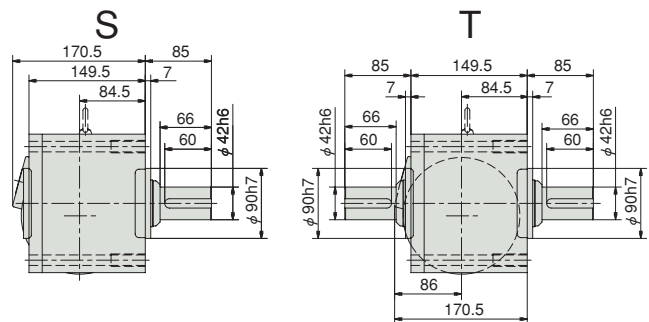
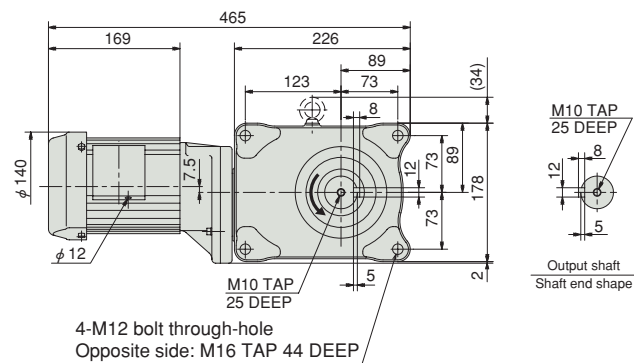
## M-60 0.2kW HMTA020-42U600~1200 ㊦

The direction of rotation of the output shaft is based on direction of rotation A shown on page 189.

Reduction ratio : 600, 720, 960, 1200

Approx. weight : 25.3kg

Reference page : Specification Chart→P131



Note) The dimension marked with ※ indicates that part of the motor protrudes from the mounting surface.

Note) For output shaft arrangement "T," the phases of the right and left output shaft key ways are not necessarily aligned precisely.

# Hypooid Motor TA Series Outline Dimensions

Face mount type 0.4 kW · Non-brake type

HYPOID MOTOR TA Outline Dimensions ● Non-brake/Face mount

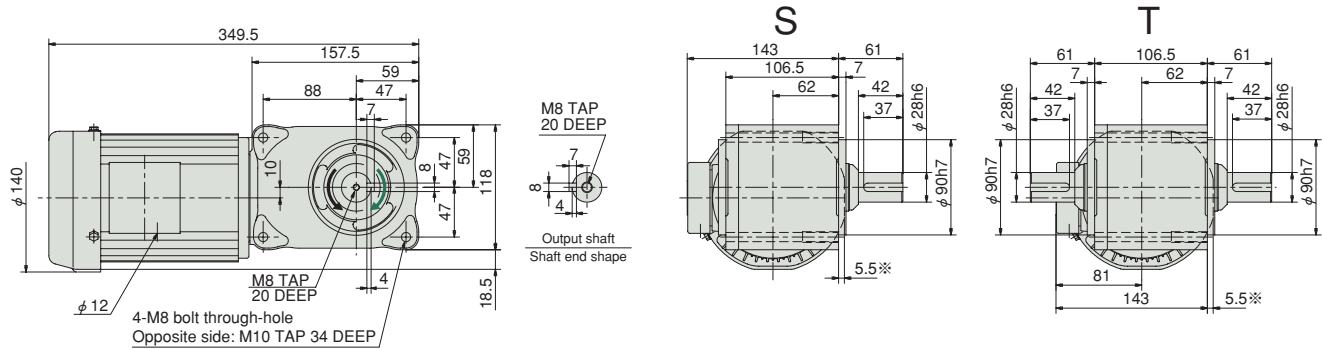
## M-61 0.4kW HMTA040-28U5~50<sup>⊥</sup>

The direction of rotation of the output shaft is based on direction of rotation A shown on page 189. 1/5~1/30 ↺、1/40~1/50 ↻

Reduction ratio : 5, 10, 15, 20, 25, 30, 40, 50

Approx. weight : 10.2kg

Reference page : Specification Chart→P132



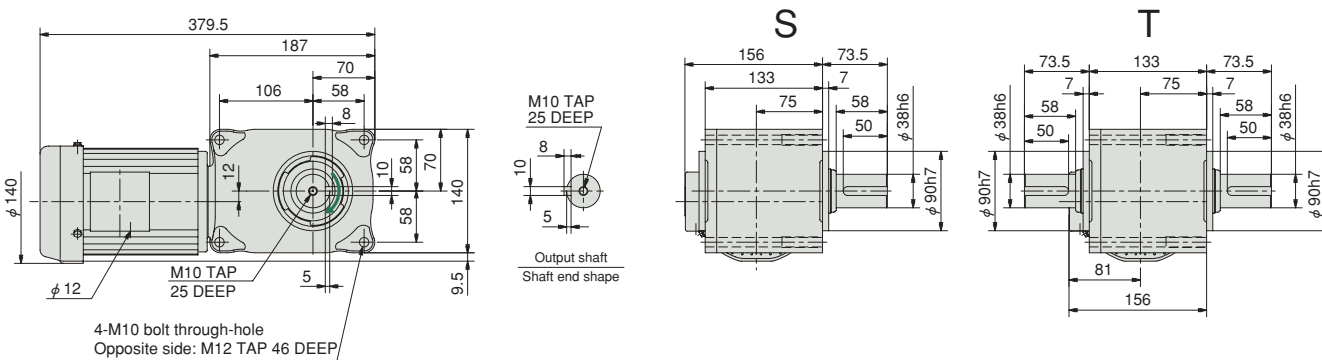
## M-62 0.4kW HMTA040-38U60~200<sup>⊥</sup>

The direction of rotation of the output shaft is based on direction of rotation A shown on page 189.

Reduction ratio : 60, 80, 100, 120, 160, 200

Approx. weight : 16.0kg

Reference page : Specification Chart→P132



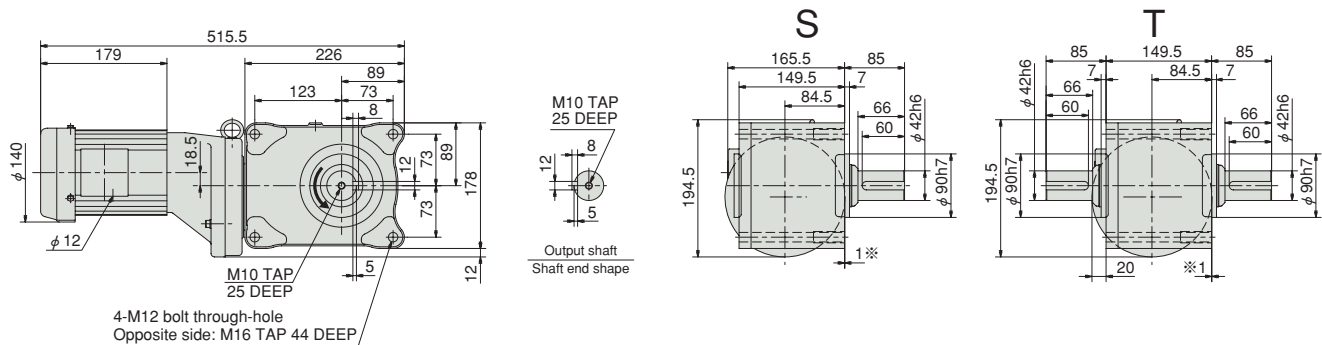
## M-63 0.4kW HMTA040-42U300~480<sup>⊥</sup>

The direction of rotation of the output shaft is based on direction of rotation A shown on page 189.

Reduction ratio : 300, 360, 480

Approx. weight : 30.2kg

Reference page : Specification Chart→P132



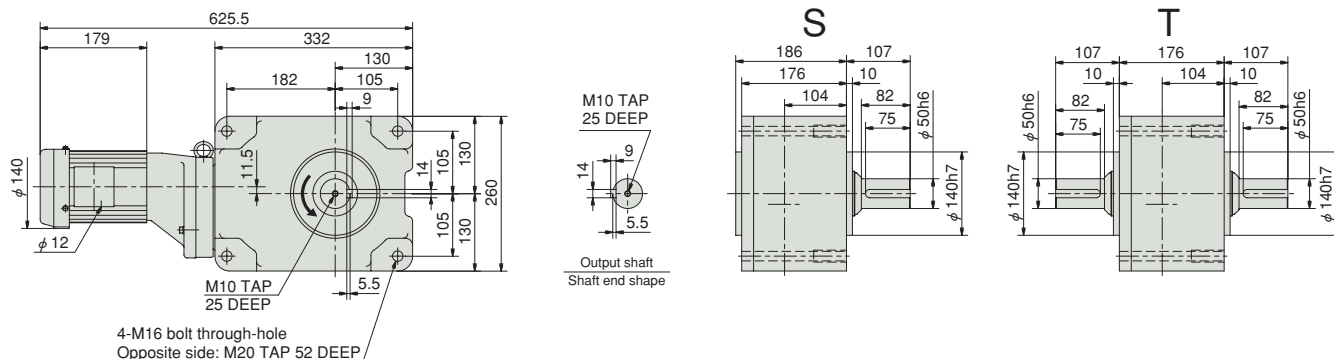
## M-64 0.4kW HMTA040-50U600~1200<sup>⊥</sup>

The direction of rotation of the output shaft is based on direction of rotation A shown on page 189.

Reduction ratio : 600, 720, 960, 1200

Approx. weight : 58.8kg

Reference page : Specification Chart→P132



Note) The dimension marked with \* indicates that part of the motor protrudes from the mounting surface.

Note) For output shaft arrangement "T," the phases of the right and left output shaft key ways are not necessarily aligned precisely.

# Hypoid Motor TA Series Outline Dimensions

Face mount type 0.75 kW · Non-brake type

HYPOID MOTOR TA Outline Dimensions ● Non-brake/Face mount

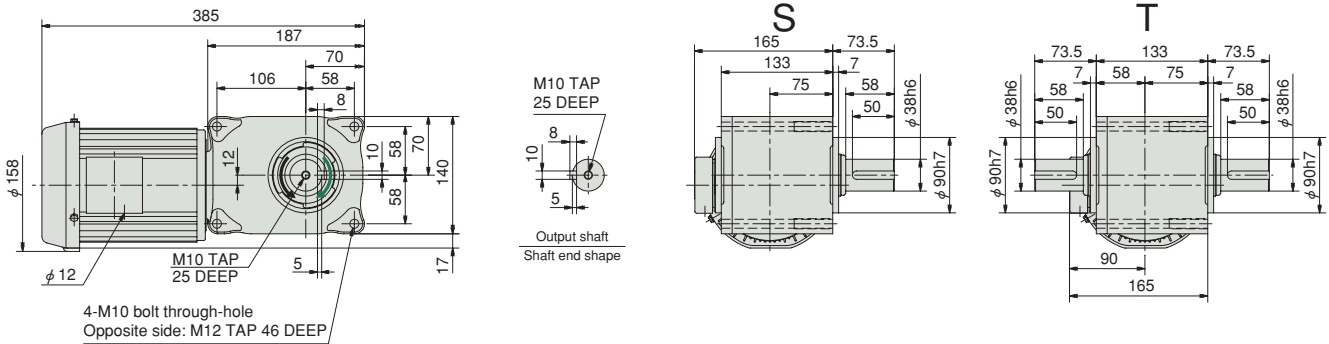
## M-65 0.75kW HMTA075-38U5~50<sup>Ⓗ</sup>

The direction of rotation of the output shaft is based on direction of rotation A shown on page 189. 1/5~1/30 (↺), 1/40~1/50 (↻)

Reduction ratio : 5, 10, 15, 20, 25, 30, 40, 50

Approx. weight : 21.0kg

Reference page : Specification Chart→P132



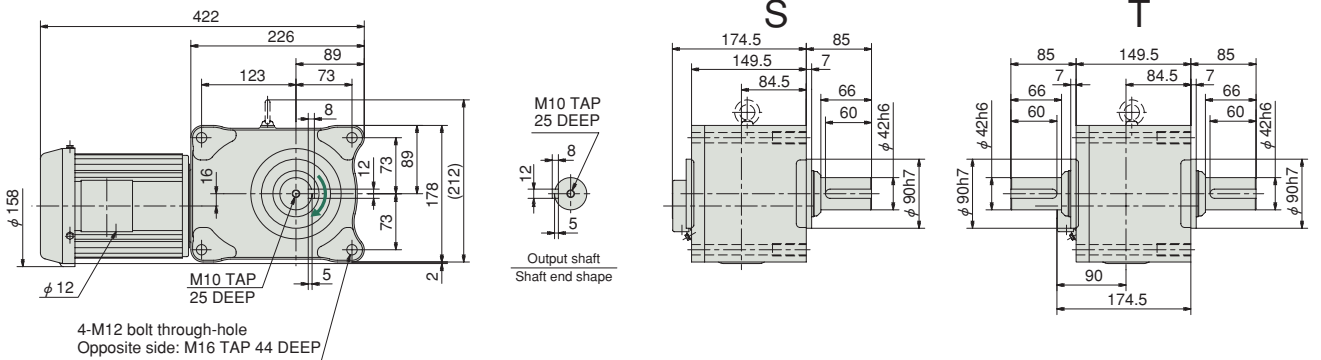
## M-66 0.75kW HMTA075-42U60~200<sup>Ⓗ</sup>

The direction of rotation of the output shaft is based on direction of rotation A shown on page 189.

Reduction ratio : 60, 80, 100, 120, 160, 200

Approx. weight : 27.0g

Reference page : Specification Chart→P132



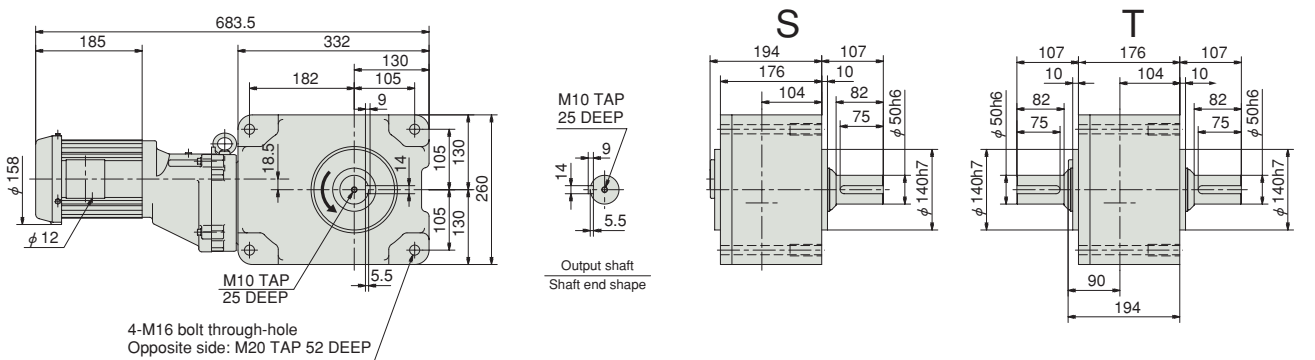
## M-67 0.75kW HMTA075-50U300~480<sup>Ⓗ</sup>

The direction of rotation of the output shaft is based on direction of rotation A shown on page 189.

Reduction ratio : 300, 360, 480

Approx. weight : 67.5kg

Reference page : Specification Chart→P132



Note) For output shaft arrangement "T," the phases of the right and left output shaft key ways are not necessarily aligned precisely.

# Hypoid Motor TA Series Outline Dimensions

Face mount type 1.5 · 2.2 kW · Non-brake type

HYPOID MOTOR TA Outline Dimensions ● Non-brake/Face mount

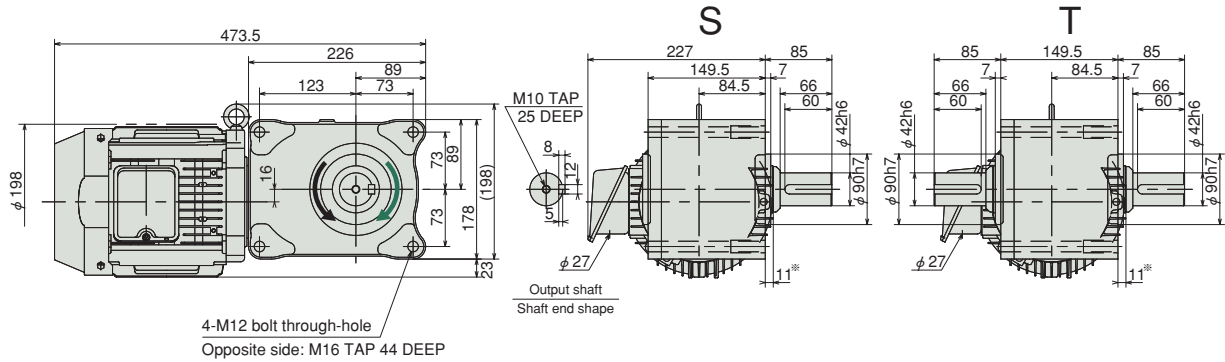
## M-68 1.5kW HMTA150-42U5~80

The direction of rotation of the output shaft is based on direction of rotation A shown on page 189. 1/5~1/30 ↺, 1/40~1/50 ↻

Reduction ratio : 5, 10, 15, 20, 25, 30, 40, 50, 60, 80

Approx. weight : 33.0kg

Reference page : Specification Chart→P133



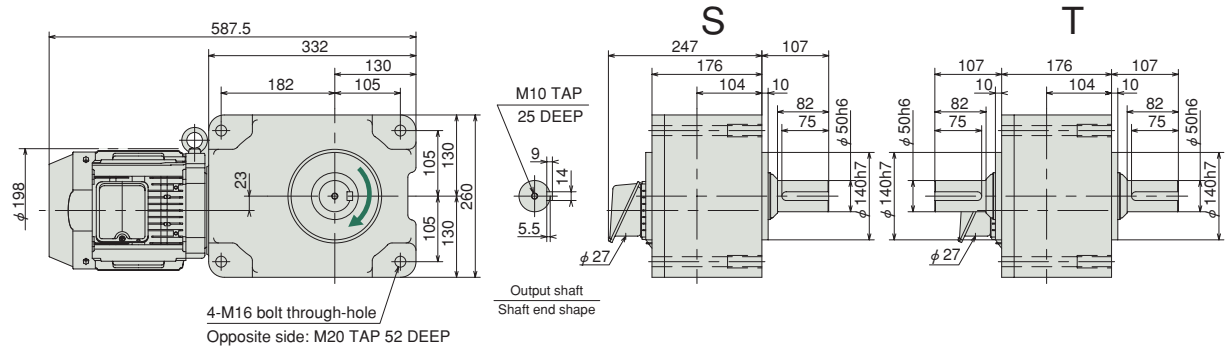
## M-69 1.5kW HMTA150-50U100~200

The direction of rotation of the output shaft is based on direction of rotation A shown on page 189.

Reduction ratio : 100, 120, 160, 200

Approx. weight : 63.0kg

Reference page : Specification Chart→P133



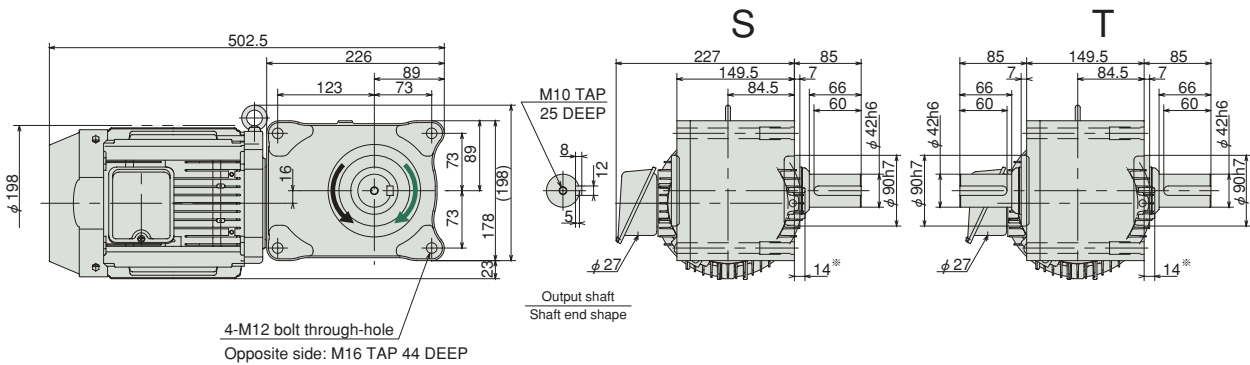
## M-70 2.2kW HMTA220-42U5~60

The direction of rotation of the output shaft is based on direction of rotation A shown on page 189. 1/5~1/20 ↺, 1/25~1/60 ↻

Reduction ratio : 5, 10, 15, 20, 25, 30, 40, 50, 60

Approx. weight : 38.0kg

Reference page : Specification Chart→P133



Note) The dimension marked with \* indicates that part of the motor protrudes from the mounting surface.

Note) For output shaft arrangement "T," the phases of the right and left output shaft key ways are not necessarily aligned precisely.

# Hypooid Motor TA Series Outline Dimensions

Face mount type 2.2 · 3.7 · 5.5 kW · Non-brake type

HYPOID MOTOR TA Outline Dimensions ● Non-brake/Face mount

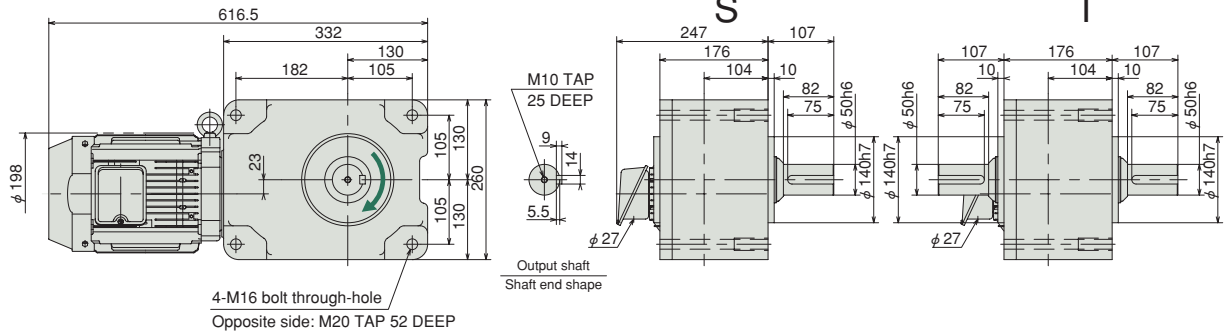
## M-71 2.2kW HMTA220-50U80~120<sup>Ⓗ</sup>

The direction of rotation of the output shaft is based on direction of rotation A shown on page 189.

Reduction ratio : 80, 100, 120

Approx. weight : 67.0kg

Reference page : Specification Chart→P133



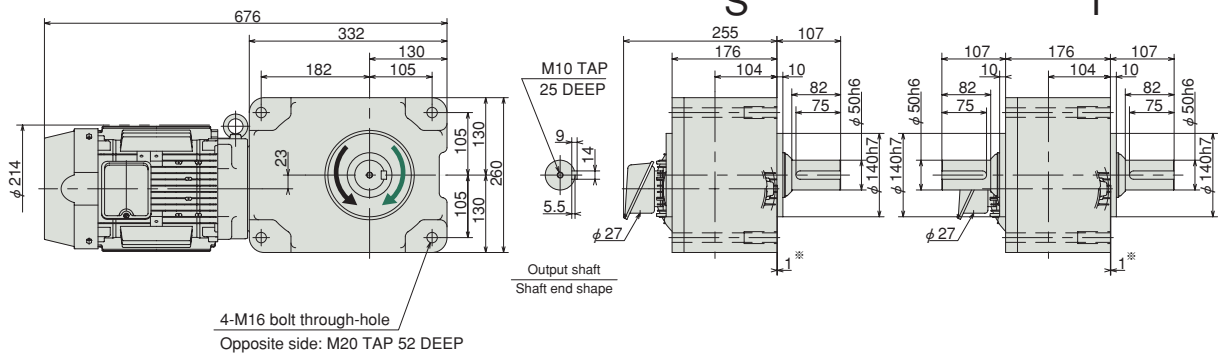
## M-72 3.7kW HMTA370-50U5~60<sup>Ⓗ</sup>

The direction of rotation of the output shaft is based on direction of rotation A shown on page 189. 1/5~1/20 ↺、1/25~1/60 ↻

Reduction ratio : 5, 10, 15, 20, 25, 30, 40, 50, 60

Approx. weight : 76.0kg

Reference page : Specification Chart→P133



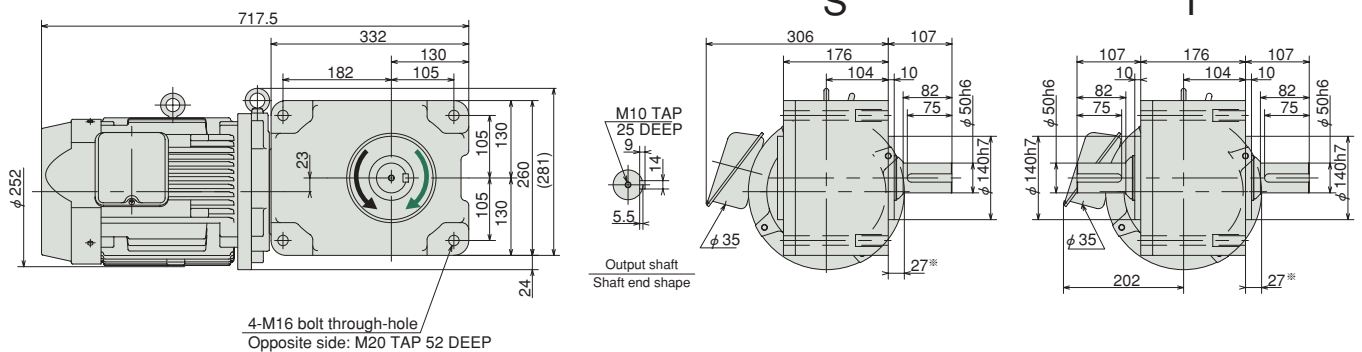
## M-73 5.5kW HMTA550-50U5~40<sup>Ⓗ</sup>

The direction of rotation of the output shaft is based on direction of rotation A shown on page 189. 1/5~1/20 ↺、1/25~1/40 ↻

Reduction ratio : 5, 10, 15, 20, 25, 30, 40

Approx. weight : 97.0kg

Reference page : Specification Chart→P133



Note) The dimension marked with ※ indicates that part of the motor protrudes from the mounting surface.

Note) For output shaft arrangement "T," the phases of the right and left output shaft key ways are not necessarily aligned precisely.

# Hypooid Motor TA Series Outline Dimensions

Face mount type 100 W · Non-brake type

HYPOID MOTOR TA Outline Dimensions ● Non-brake/Face mount

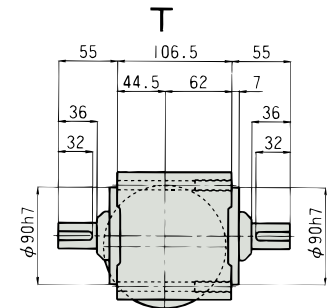
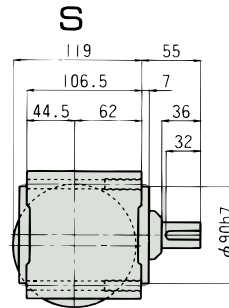
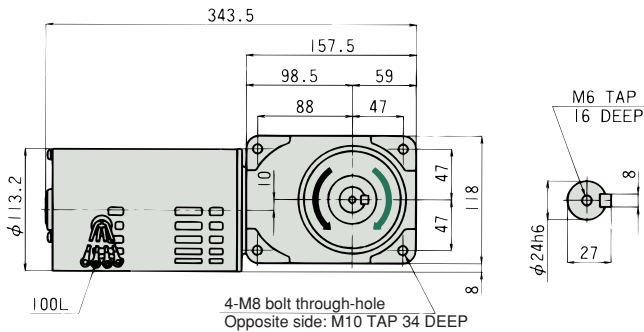
## M-74 100W HMTA100-24U5~200<sup>Ⓗ</sup>

The direction of rotation of the output shaft is based on direction of rotation A shown on page 189. 1/5~1/60 (↺), 1/80~1/200 (↻)

Reduction ratio : 5, 10, 15, 20, 25, 30, 40, 50, 60, 80, 100, 120, 160, 200

Approx. weight : 10.7kg

Reference page : Specification Chart→P134



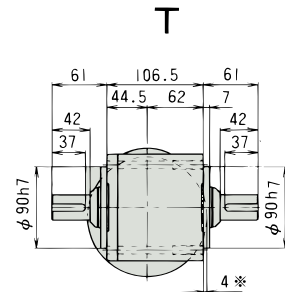
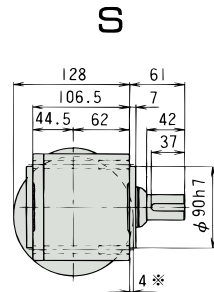
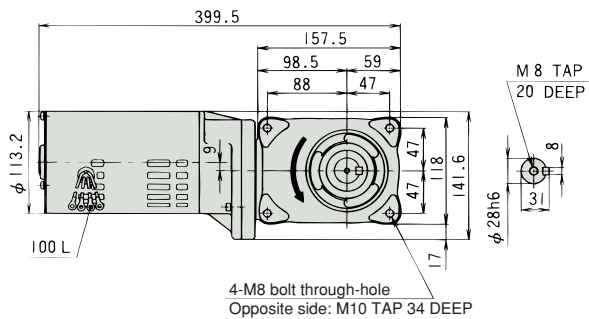
## M-75 100W HMTA100-28U300~480<sup>Ⓗ</sup>

The direction of rotation of the output shaft is based on direction of rotation A shown on page 189.

Reduction ratio : 300, 360, 480

Approx. weight : 12.9kg

Reference page : Specification Chart→P134



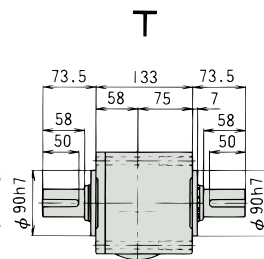
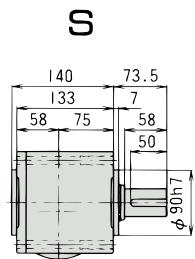
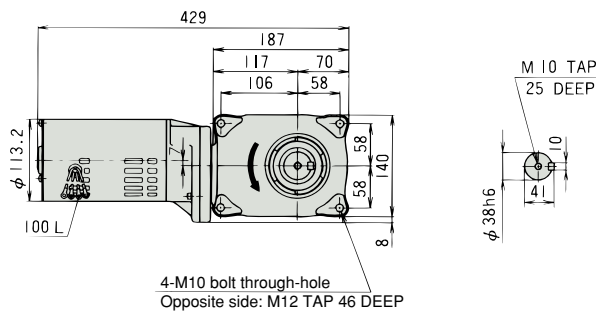
## M-76 100W HMTA100-38U600~1200<sup>Ⓗ</sup>

The direction of rotation of the output shaft is based on direction of rotation A shown on page 189.

Reduction ratio : 600, 720, 960, 1200

Approx. weight : 16.6kg

Reference page : Specification Chart→P134



Note) The dimension marked with \* indicates that part of the motor protrudes from the mounting surface.

Note) For output shaft arrangement "T," the phases of the right and left output shaft key ways are not necessarily aligned precisely.

# Hypoid Motor TA Series Outline Dimensions

Face mount type 200 W · Non-brake type

HYPOID MOTOR TA Outline Dimensions ● Non-brake/Face mount

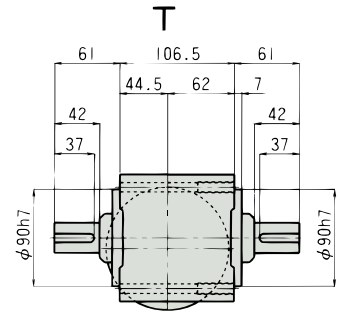
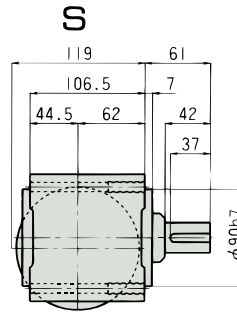
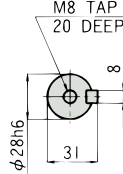
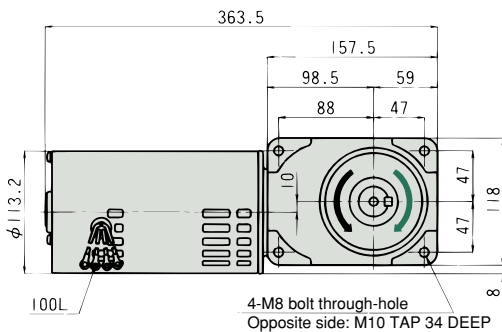
## M-77 200W HMTA200-28U5~200<sup>S</sup>

The direction of rotation of the output shaft is based on direction of rotation A shown on page 189. 1/5~1/60 ↺、1/80~1/200 ↻

Reduction ratio : 5, 10, 15, 20, 25, 30, 40, 50, 60, 80, 100, 120, 160, 200

Approx. weight : 12.3kg

Reference page : Specification Chart→P134



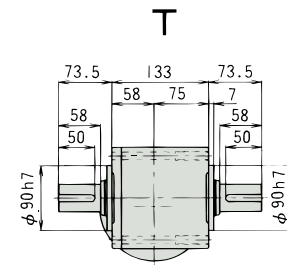
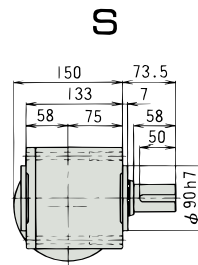
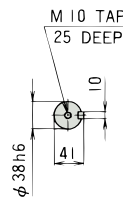
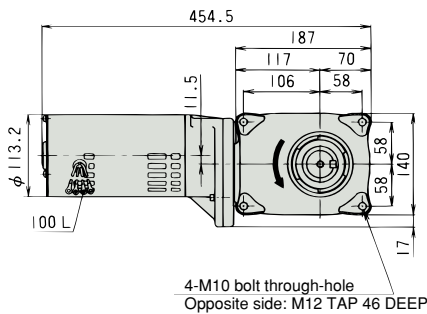
## M-78 200W HMTA200-38U300~480<sup>S</sup>

The direction of rotation of the output shaft is based on direction of rotation A shown on page 189.

Reduction ratio : 300, 360, 480

Approx. weight : 18.4kg

Reference page : Specification Chart→P134



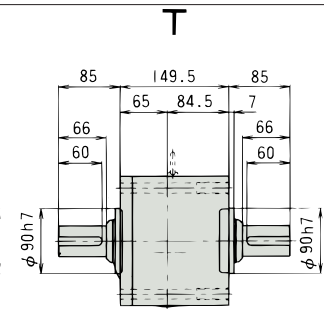
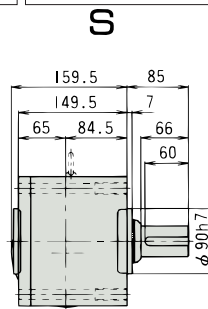
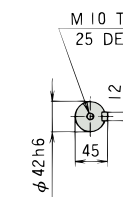
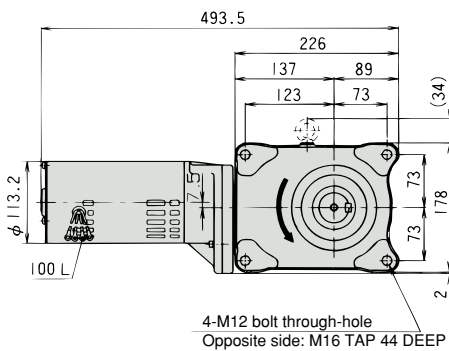
## M-79 200W HMTA200-42U600~1200<sup>S</sup>

The direction of rotation of the output shaft is based on direction of rotation A shown on page 189.

Reduction ratio : 600, 720, 960, 1200

Approx. weight : 27.9kg

Reference page : Specification Chart→P134



Note) For output shaft arrangement "T," the phases of the right and left output shaft key ways are not necessarily aligned precisely.