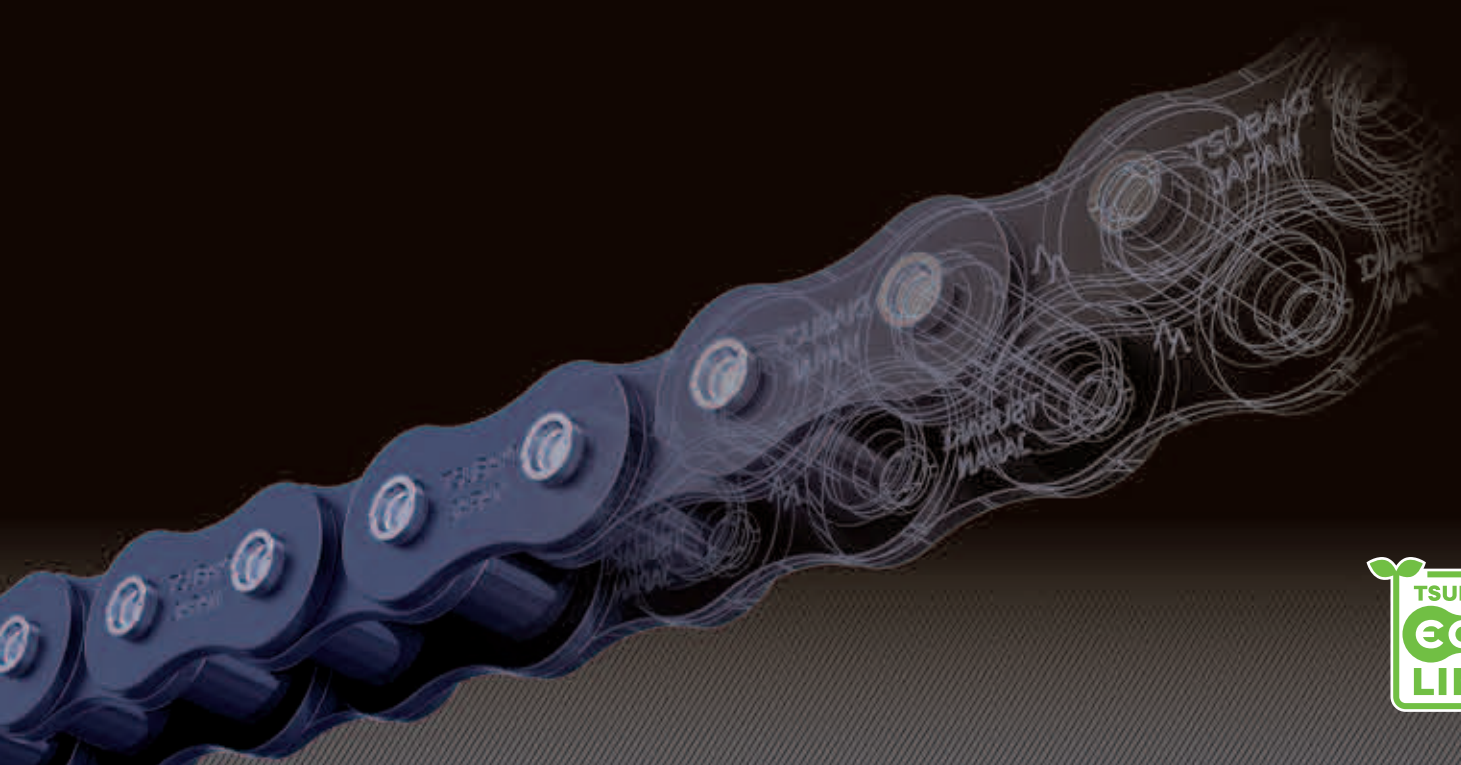


Lambda RS Roller Chain BS/DIN series

The world's most advanced lube free chain



Made in Japan

Located in Kansai Science City, the Kyotanabe Plant embodies our wide spectrum of cutting-edge technological solutions. Our aim is to develop this environmentally friendly facility into the world's number one chain plant. Furthermore, Kyotanabe's Technical Center plays a vital role within the Tsubaki Group through its R&D activities and distribution of knowledge.

The Kyotanabe Plant is an excellent example of a facility built on the foundation of Tsubaki's technical expertise.

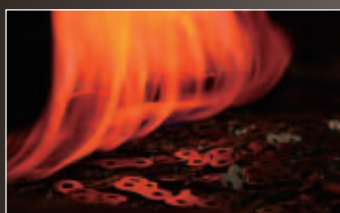
Consideration for the Global Environment

The Tsubaki Group is working to conserve the environment and reduce the environmental impact of its operations by improving the efficiency of its manufacturing activities.

In addition, the Tsubaki Group is advancing the development of environmentally friendly products. These eco-products help customers reduce energy consumption and improve the economic aspects of their operations.



The Tsubaki Eco Link logo is used only on products that satisfy the standards for environmental friendliness set by the Tsubaki Group.



New Generation Tsubaki Lube Free RS Roller Chain – Lambda

Since 1917 Tsubakimoto Chain Co. has consistently provided the highest quality industrial chain. Being the global leader in innovation, Tsubaki became the world's first manufacturer to introduce lube free chain under the brand name Lambda in 1988.

Lambda Chain is ideal for environments where chain lubrication is difficult, impossible or undesirable. Typical applications can be found in industries where clean environments are required (e.g. food, packaging) and in environments where abrasive contamination is prominent (e.g. wood processing, paper industry).

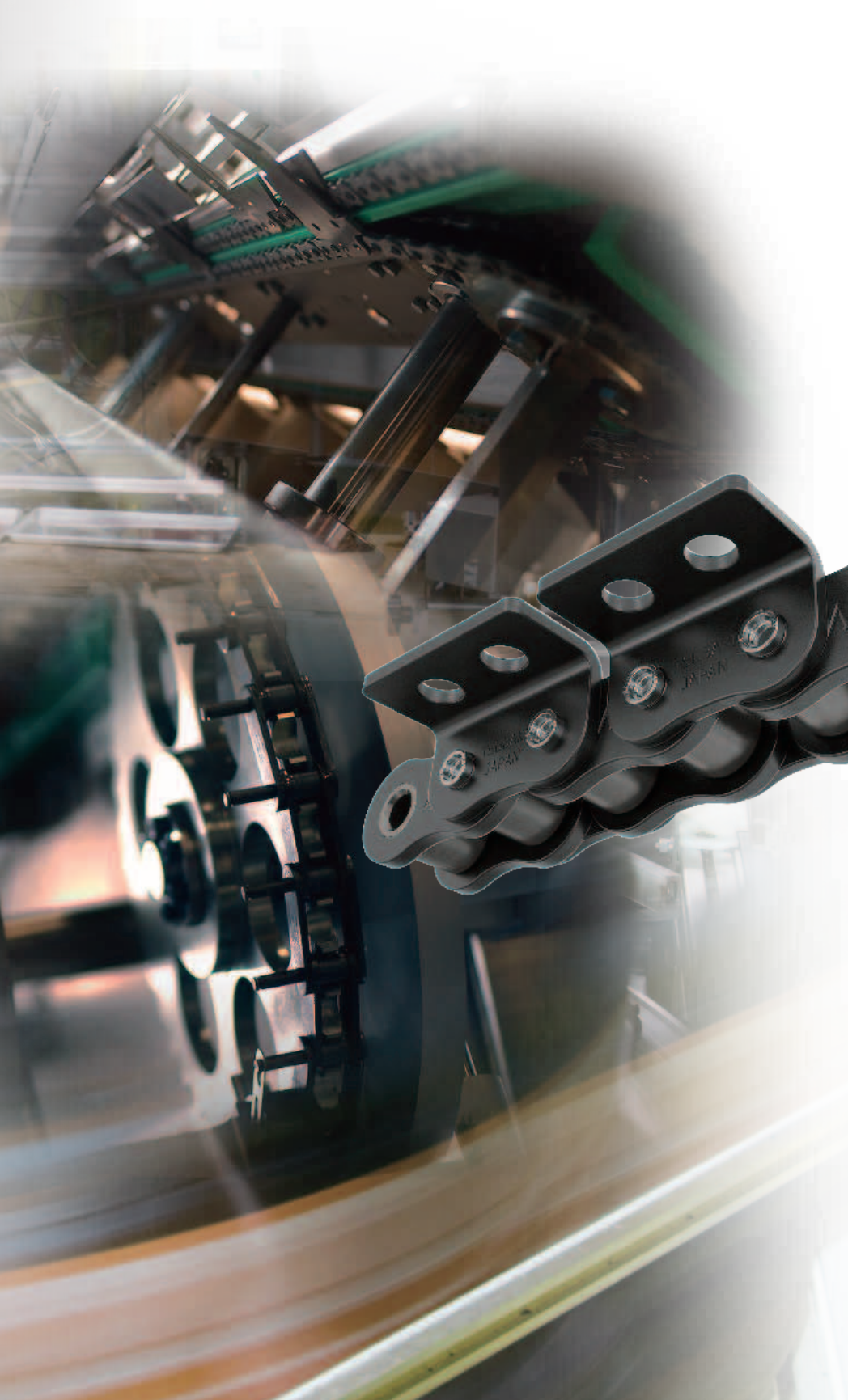
Tsubaki is now proud to introduce the 5th generation premium BS/DIN Lube Free Lambda Chain.

Chain Features:

- 1 Oil Impregnated Sintered Bush**
The microscopic pores in the seamless sintered bush are vacuum filled with high performance lubricant. The upgraded bush design provides a 50% increase in wear-life performance.
- 2 Special Coated Pin**
The special coating on the pin surface enhances the long term internal lubrication.
- 3 Center Sink Rivet**
The unique center sink pin design offers easy chain disassembly, and the markings on the rivet head will identify pin rotation.
- 4 Ring Coining**
The patented Ring Coin connecting link ensures that the chain can be specified up to its full chain capacity.



- This is applicable for attachment chains to RS16B-1.
- Average increase compared to the previous generation of Lambda Chain. The results are not yet confirmed for N.E.P and KF series Heat resistant Lambda Chain.
- The improved bush design is applicable on RF06B to RS16B.
- KFseries Lambda up to 230°C is available upon request.



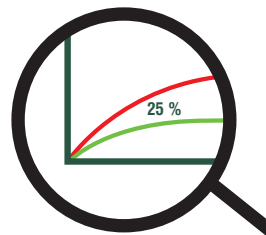
Tsubaki's Commitme

Lambda Sintered Bush



Tsubaki Lambda bushes have been upgraded to the optimum composition of sintered metals. The lubricant specifications and oil impregnation methods have been reviewed and further improved.

In addition, heat treatment and the geometry of the bush were improved to guarantee optimal performance.



Product range

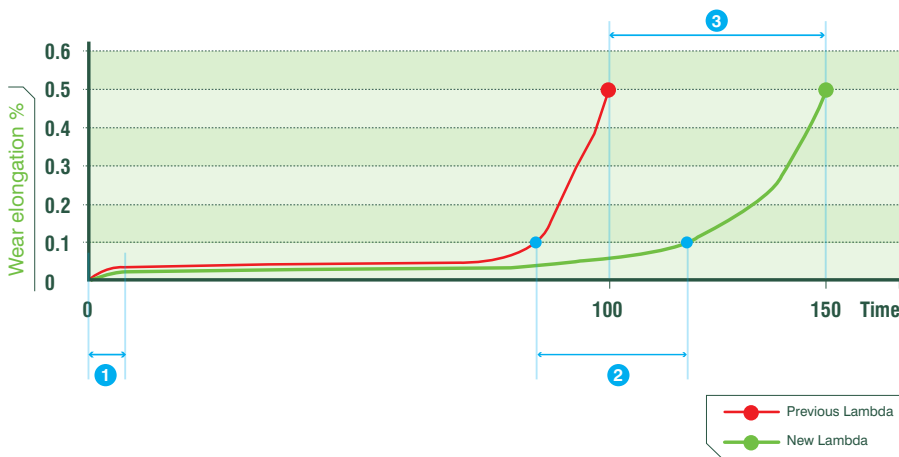


THE WORLD'S MOST ADVANCED LUBE FREE CHAIN



nt to Unparalleled Quality

Wear elongation chart (RS10B-LM Lambda)



1 Initial Elongation

For conveyor applications, a 25% reduction in initial elongation now comes as standard. This results in a reduced need for post installation maintenance (less chain / sprocket adjustment) and contributes to an overall increase in wear life ^[a].

2 Elongation Stability

The elongation pattern of the new Tsubaki Lambda Chain is now extremely stable. This minimizes the need for intermediate chain and sprocket adjustment.

3 Wear life

As a result of the achieved improvements, the wear life of the new Lambda Chain increased by 50% ^[b] while maintaining the same chain strength.

Environment

Lambda chain is a lube free chain with lubricant impregnated in the bushes. Therefore there is no need for lubricating the chain during operations. The zero usage of additional lubricant during machine operations helps reducing chemical waste and greatly limits the risk of product contamination. Tsubaki Lambda chain contributes to a clean work environment.

Manufacturing chain with a substantially longer wear-life serves the environment: less frequent chain replacement results in reduced consumption of raw materials and energy and reduces the CO₂ emission. Lambda chain is a true eco-friendly product.

Standard chain

Lambda drive and attachment chains in standard sizes are available from stock. The product is available in chain sizes from RF06B up to RS24B in simplex and duplex configurations and in N.E.P surface coated type ^[c]. Lambda chain can be used in temperatures up to 150°C ^[d].

Special chain

Tsubaki offers special chain to customer's specifications from either its fully equipped workshop in The Netherlands and the United Kingdom or from its manufacturing facilities in Japan. Heat resistant, food-grade and anti-corrosion series are also available upon request.

Matching & tagging

Deviations in chain length exist due to the manufacturing tolerances of the parts. When chains are to be used in parallel and minimizing the relative difference in the lengths is necessary, request a "matched and tagged" chain.

Note: A separate charge is required for a length matching.

TSUBAKIMOTO CHAIN CO.

Headquarters

Nakanoshima Mitsui Building
3-3-3 Nakanoshima, Kita-ku
Osaka 530-0005, Japan
Phone : +81-6-6441-0011
Facsimile : +81-6-6441-0489
Internet:
<http://tsubakimoto.com/>

Chain & Power Transmission Operations

Chain Products Department
1-3 Kannabidai 1-chome
Kyotanabe, Kyoto 610-0380, Japan
Phone : +81-774-64-5100
Facsimile : +81-774-64-5212

Global Associated Partners:

NORTH and SOUTH AMERICA

**U.S. TSUBAKI
POWER TRANSMISSION, LLC**
301 E. Marquardt Drive
Wheeling, IL 60090-6497
U.S.A.
Phone : +1-847-459-9500
Facsimile : +1-847-459-9515

TSUBAKI of CANADA LIMITED
1630 Drew Road
Mississauga, Ontario, L5S 1J6
Canada
Phone : +1-905-676-0400
Facsimile : +1-905-676-0904

**TSUBAKI BRASIL
EQUIPAMENTOS INDUSTRIAIS LTDA.**
Rua Pamplona, 1018 - C.J. 73/74
Jardim Paulista, CEP 01405-001
São Paulo - S.P. Brazil
Phone : +55-11-3253-5656
Facsimile : +55-11-3253-3384

EUROPE

TSUBAKIMOTO EUROPE B.V.
Aventurin 1200, 3316 LB Dordrecht
The Netherlands
Phone : +31-78-6204000
Facsimile : +31-78-6204001

TSUBAKIMOTO U.K. LTD.
Osier Drive, Sherwood Park
Annesley, Nottingham
NG15 0DX U.K.
Phone : +44-1623-688-700
Facsimile : +44-1623-688-789

TSUBAKI DEUTSCHLAND GmbH
ASTO Park Oberpfaffenhofen
Friedrichshafener Straße 1
D-82205 Gilching, Germany
Phone : +49-8105-7307100
Facsimile : +49-8105-7307101

ASIA and OCEANIA

TSUBAKIMOTO SINGAPORE PTE. LTD.
25 Gul Lane
Jurong
Singapore 629419
Phone : +65-6861-0422/3/4
Facsimile : +65-6861-7035

TSUBAKIMOTO (THAILAND) CO., LTD.
388 Exchange Tower, 19th Floor Unit
1902, Sukhumvit Road, Klongtoey
Bangkok 10110 Thailand
Phone : +66-2-262-0667/8/9 (3 lines)
Facsimile : +66-2-262-0670

**TSUBAKI INDIA
POWER TRANSMISSION PTE. LTD.**
Chandrika Chambers No.4, 3rd Floor
Anthony Street, Royapettah
Chennai-600014, Tamil Nadu, India
Phone : +91-44-4231-5251
Facsimile : +91-44-4231-5253

**TSUBAKIMOTO SINGAPORE PTE. LTD.
VIETNAM REPRESENTATIVE OFFICE**
8F H&H Building, 209 Hoang Van Thu
Phu Nhuan District, Ho Chi Minh City
Vietnam
Phone : +84-8-3999-0131 or 0132
Facsimile : +84-8-3999-0130

**TSUBAKIMOTO SINGAPORE PTE. LTD.
INDONESIA REPRESENTATIVE OFFICE**
Wisma Kyoei Prince, 11th Floor, Suite 1106
Jl. Jend. Sudirman, Kav. 3, Jakarta 10220
Indonesia
Phone : +62-21-5724-275
Facsimile : +62-21-5724-275

TSUBAKI AUSTRALIA PTY. LTD.
Unit E, 95-101 Silverwater Road
Silverwater, N.S.W. 2128
Australia
Phone : +61-2-9704-2500
Facsimile : +61-2-9704-2550

TAIWAN TSUBAKIMOTO CO.
No. 33, Lane 17, Zihciang North Road
Gueishan Township, Taoyuan County
Taiwan
Phone : +886-33-293827/8/9
Facsimile : +886-33-293065

**TSUBAKIMOTO CHAIN TRADING
(SHANGHAI) CO., LTD.**
Room 1703, Aetna Tower, 107
Zunyi Rd., Changning District
Shanghai 200051, China
Phone : +86-21-5396-6651/2
Facsimile : +86-21-5396-6628