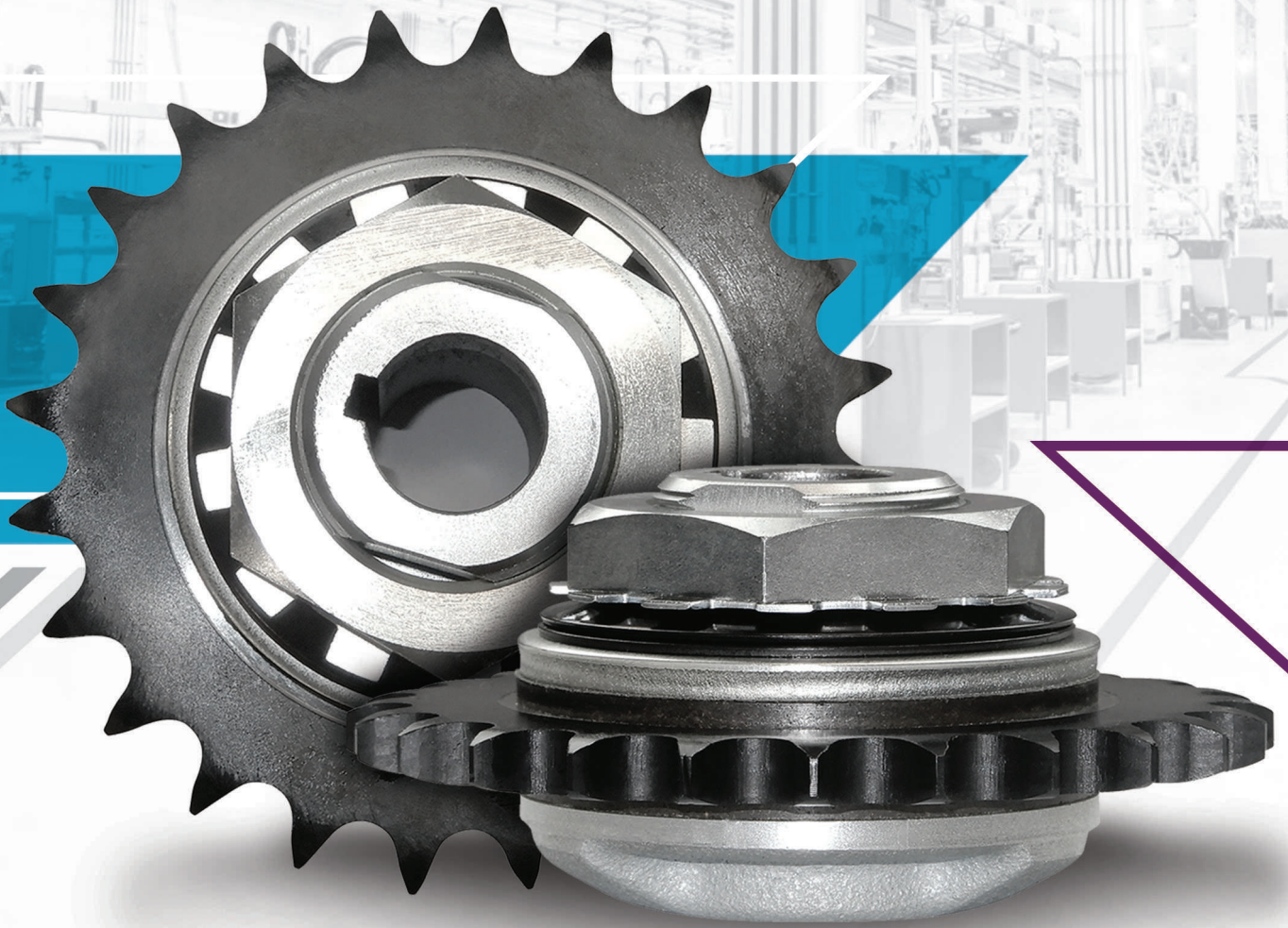


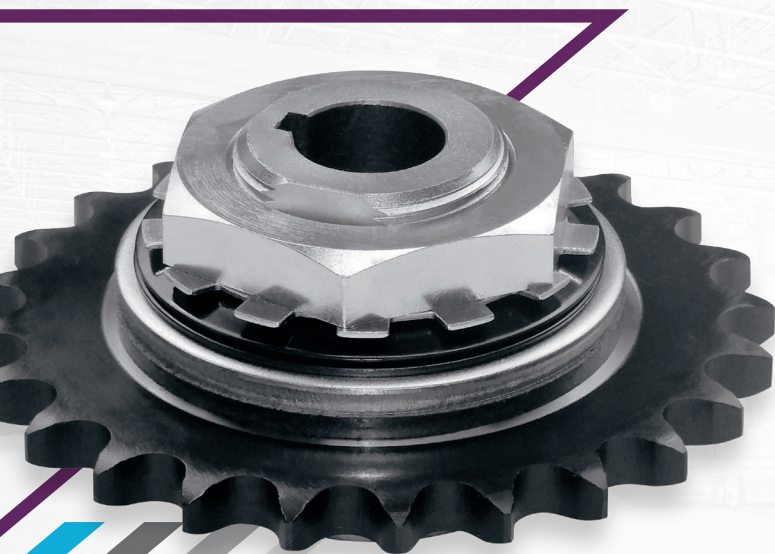
TORQUE LIMITER SPROCKETS

*Maximum Protection
From Torque Overload*



PROVIDES VITAL MACHINERY WITH TOP-NOTCH SAFETY

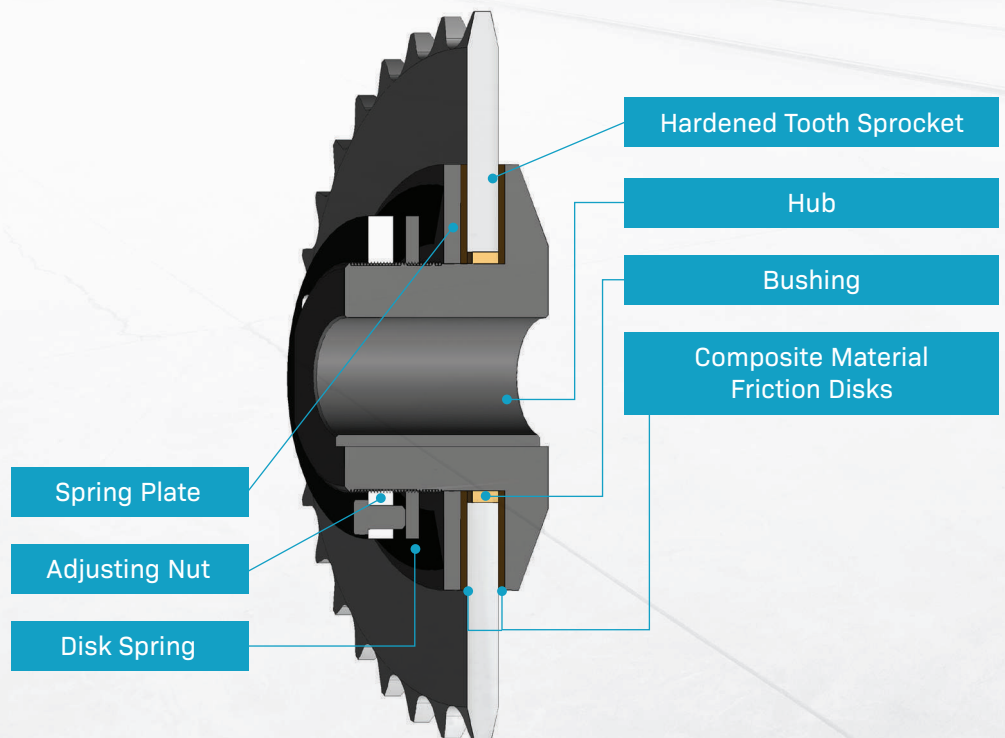
Tsubaki's user-friendly, cost-effective Torque Limiter Sprockets come pre-assembled and provide maximum protection to critical equipment from torque overloading.



- Uses two composite friction disks compressed by disk springs against the ground face of the hardened tooth sprocket.
- Functions as an automatic safety device to prevent overload, providing reliable operations and adjustable functions.
- Automatically resetting.
- Torque setting easily set by tightening the adjusting nut.
- Available in various sizes and tooth counts.

AUTOMATIC RESET

When overload is removed, the unit will automatically reset.



PART-NUMBERING

60 TTA 30 - 50 - 2

Sprocket Pitch

Torque Limiter

Sprocket Tooth Count

Torque Limiter Size

Spring Count

Size	Bore Range	Sprocket Pitch	Min Tooth Count	Max Tooth Count
20	0.39" - 0.55" (10 - 14 mm)	35	20	30
		40	16	26
25	0.47" - 0.88" (12 - 22 mm)	40	20	32
		50	17	28
35	0.71" - 1.00" (18 - 25 mm)	40	26	45
		50	21	36
		60	18	30
50	0.86" - 1.65" (22 - 42 mm)	80	15	21
		50	29	50
		60	25	40
70	1.26" - 2.52" (32 - 64 mm)	80	19	30
		60	33	54
		80	26	42
		100	21	35

Size	Spring Count		
	Spring Count	Min Torque Setting (lbs-ft)	Max Torque Setting (lbs-ft)
20	1	2.1	7.25
	2	5.1	14.8
25	1	5	20
	2	10	40
35	1	15	55
	2	25	110
50	1	35	155
	2	65	310
70	1	86	420
	2	164	797

ADDITIONAL OPTIONS

**PATENTED
SMART TOOTH®
WEAR INDICATOR
SPROCKETS**



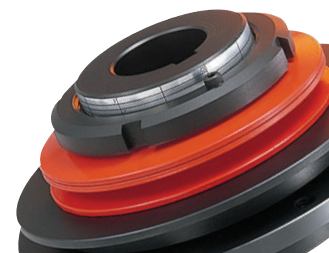
**TORQUE
LIMITER
COUPLINGS**



**HIGH TORQUE
SETTING
TORQUE
LIMITERS**



**BALL DETENT
STYLE SHOCK
GUARDS**



EXAMPLES OF COMMON PART NUMBERS

TTA20	TTA 25	TTA 35	TTA 50	TTA 70
35TTA20-20-1	35TTA25-25-1	35TTA35-35-1	40TTA35-50-1	60TTA36-70-1
35TTA20-20-2	35TTA25-25-2	35TTA35-35-2	40TTA35-50-2	60TTA36-70-2
35TTA24-20-1	35TTA26-25-1	35TTA40-35-1	50TTA30-50-1	80TTA26-70-1
35TTA24-20-2	35TTA26-25-2	35TTA40-35-2	50TTA30-50-2	80TTA26-70-2
35TTA28-20-1	40TTA20-25-1	40TTA28-35-1	50TTA32-50-1	80TTA28-70-1
35TTA28-20-2	40TTA20-25-2	40TTA28-35-2	50TTA32-50-2	80TTA28-70-2
40TTA16-20-1	40TTA22-25-1	40TTA30-35-1	60TTA25-50-1	80TTA30-70-1
40TTA16-20-2	40TTA22-25-2	40TTA30-35-2	60TTA25-50-2	80TTA30-70-2
40TTA17-20-1	40TTA24-25-1	40TTA32-35-1	60TTA26-50-1	80TTA36-70-1
40TTA17-20-2	40TTA24-25-2	40TTA32-35-2	60TTA26-50-2	80TTA36-70-2
40TTA18-20-1	40TTA28-25-1	50TTA22-35-1	60TTA28-50-1	100TTA22-70-1
40TTA18-20-2	40TTA28-25-2	50TTA22-35-2	60TTA28-50-2	100TTA22-70-2
40TTA20-20-1	40TTA30-25-1	50TTA24-35-1	60TTA30-50-1	100TTA24-70-1
40TTA20-20-2	40TTA30-25-2	50TTA24-35-2	60TTA30-50-2	100TTA24-70-2
40TTA21-20-1	50TTA17-25-1	50TTA25-35-1	80TTA20-50-1	
40TTA21-20-2	50TTA17-25-2	50TTA25-35-2	80TTA20-50-2	
40TTA22-20-1	50TTA21-25-1	50TTA26-35-1	80TTA22-50-1	
40TTA22-20-2	50TTA21-25-2	50TTA26-35-2	80TTA22-50-2	
	50TTA22-25-1	60TTA18-35-1	80TTA24-50-1	
	50TTA22-25-2	60TTA18-35-2	80TTA24-50-2	
		60TTA20-35-1		
		60TTA20-35-2		



Corporate Headquarters

U.S. Tsubaki Power Transmission, LLC
301 E. Marquardt Drive
Wheeling, IL 60090
Tel: (800) 323-7790
www.ustsubaki.com



Roller Chain Division
821 Main Street
Holyoke, MA 01040
Tel: (800) 323-7790



Conveyor and Construction
Chain Division
1010 Edgewater Drive
Sandusky, OH 44870
Tel: (800) 537-6140



Sprocket Manufacturing
1630 Drew Road
Mississauga, Ontario
Tel: (800) 323-7790



Cable & Hose Carrier Division
7100 W. Marcia Road
Milwaukee, WI 53223
Tel: (800) 443-4216
www.kabelschlepp.com

Note: In accordance with the policy of U.S. Tsubaki Power Transmission, LLC to consistently improve its products, the specifications in this brochure are subject to change without notice. The logos, brand names or product names in this brochure are trademarks or registered trademarks of Tsubakimoto Chain Co. and its subsidiaries in Japan, the U.S. and other countries.